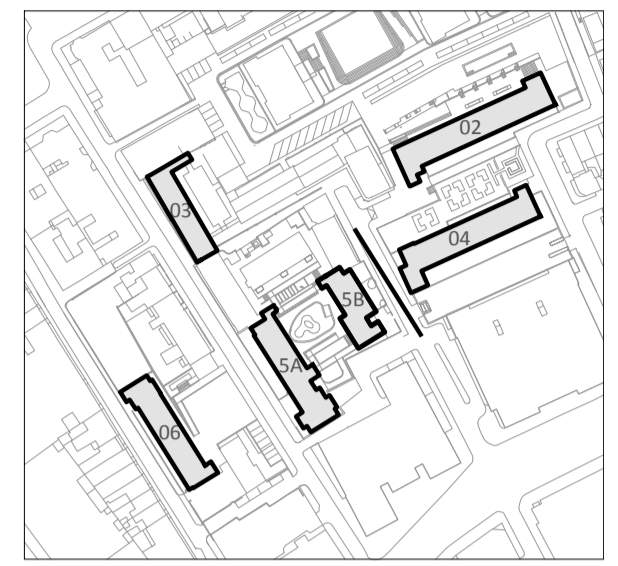


This drawing and design is for use solely in connection with the project described below. The drawing and design is the copyright of Avanti Architects Ltd. and must not be re-issued, loaned or copied without written consent. All dimensions and setting out to be checked on site before construction. This drawing is to be read in conjunction with all other information relevant to the project. Any apparent discrepancy is to be brought to the attention of Avanti Architects Ltd. Do not scale from this drawing.

Notes



BUILDING KEY
 02-Bremundsbury
 03-Devonshire
 04-Windmill
 5A-Richbell
 5B-Springwater
 06-Falcon

Please note: Proposed floor levels have been taken from plan surveys, floor levels indicated in surveyed elevations are inconsistent with plan surveys.

KEY

- Brickwork
- Precast Concrete Cladding
- Aluminium Rainscreen Cladding
- Ideal Combi Rainscreen Panel
- Ventilation Grill
- Air Brick Ventilation

GRC coping/banding setting out to specialist subcontractor advice, to be as follows:

- EQ1 - 600mm (at corners)
- EQ2 and above - Length to be divided evenly between corners. Length not to exceed 3m.

Revision	Date	Drawn by	Checked by	Description
D	12/02/16	JW	AM	CONSTRUCTION ISSUE (Package 4) Drawing amended to client comments
C	14/07/16	CS	AM	CONSTRUCTION ISSUE(P4)
B	27/11/15	CS	AM	TENDER ISSUE (Package 4)
A	30/10/15	IMA	AM	TENDER ISSUE Coordination with updated GA's and Sections

Scale	Size	Date First Issue
1:100	A1	10/07/15
Drawn by	Checked by	
IMA/SJ	AM	

Project
 Tybald's Estate
 SPRINGWATER

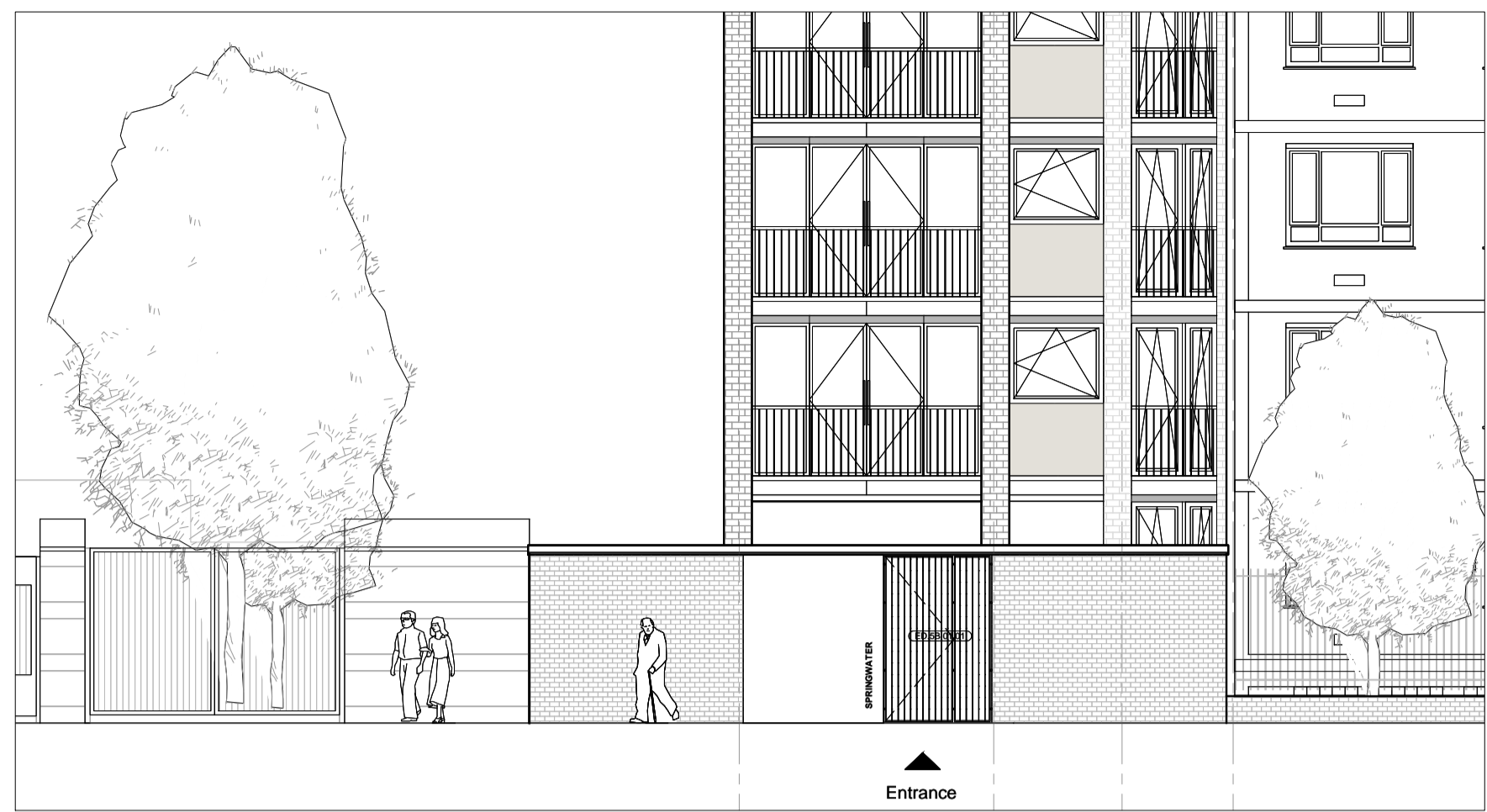
Drawing
 NE ELEVATION

Drawing number	Revision
12026-T-5B-EL-01	D

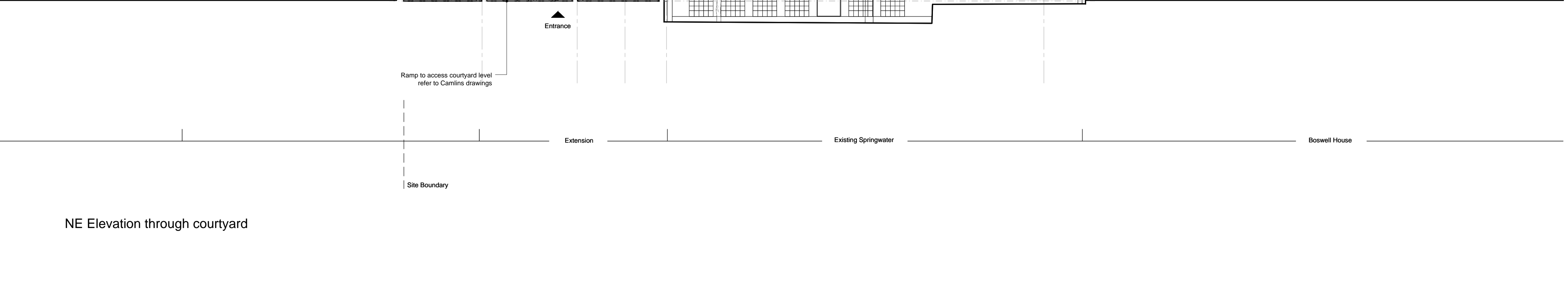
Status
 CONSTRUCTION

AVANTI ARCHITECTS

© Avanti Architects Ltd www.avantiarchitects.co.uk
 361-373 City Road + 44 (0) 20 7278 3060
 London EC1V 1AS aa@avantiarchitects.co.uk



Detail of Entrance Protico to New North Street



NE Elevation through courtyard

