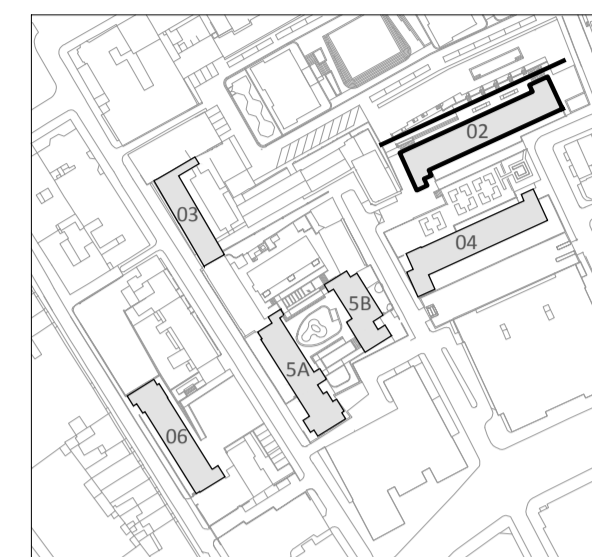


This drawing and design is for use solely in connection with the project described below. The drawing and design is the copyright of Avanti Architects Ltd. and must not be re-issued, loaned or copied without written consent. All dimensions and setting out to be checked on site before construction. This drawing is to be read in conjunction with all other information relevant to the project. Any apparent discrepancy is to be brought to the attention of Avanti Architects Ltd. Do not scale from this drawing.

**Notes**



**BUILDING KEY**  
 02-Blemundsbury  
 03-Devonshire  
 04-Windmill  
 5A-Richbell  
 5B-Springwater  
 06-Falcon

Please note: Proposed floor levels have been taken from plan surveys, floor levels indicated in surveyed elevations are inconsistent with plan surveys.

- KEY**
- Brickwork
  - Precast Concrete Cladding
  - Aluminium Rainscreen Cladding
  - Ideal Combi Rainscreen Panel
  - Ventilation Gril
  - Air Brick Ventilation

GRC coping/banding setting out to specialist subcontractor advice, to be as follows:

- EQ1 - 600mm (at corners)
- EQ2 and above - Length to be divided evenly between corners. Length not to exceed 3m.

Revision	Date	Drawn by	Checked by	Description
A	30/10/15	MAA	AM	TENDER ISSUE Coordination with updated GA's and Sections
B	27/11/15	CS	AM	TENDER ISSUE (Package 4)
C	14/01/16	CS	AM	CONSTRUCTION ISSUE (P4)
D	14/01/16	JW	AM	CONSTRUCTION ISSUE (Package 4) Drawing amended to client comments

Scale	Size	Date First Issue
1:100	A1	10/07/15

**Project**  
 Tybald's Estate  
 BLEMUNDSBURY

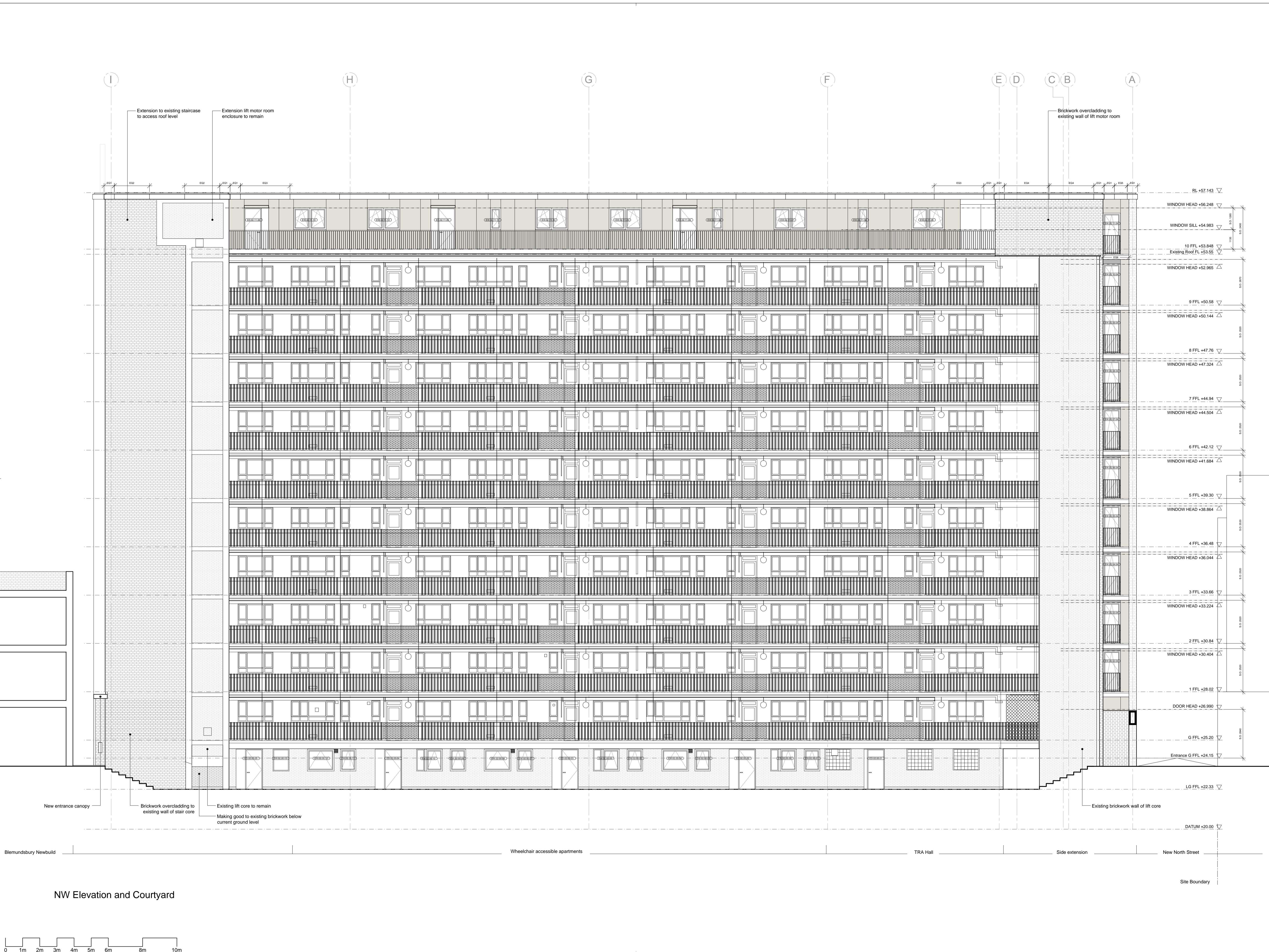
**Drawing**  
 NW ELEVATION

**Drawing number** 12026-T-02-EL-03 **Revision** D

**Status**  
 CONSTRUCTION



© Avanti Architects Ltd www.avantiarchitects.co.uk  
 361-373 City Road + 44 (0) 20 7278 3060  
 London EC1V 1AS aa@avantiarchitects.co.uk



NW Elevation and Courtyard

