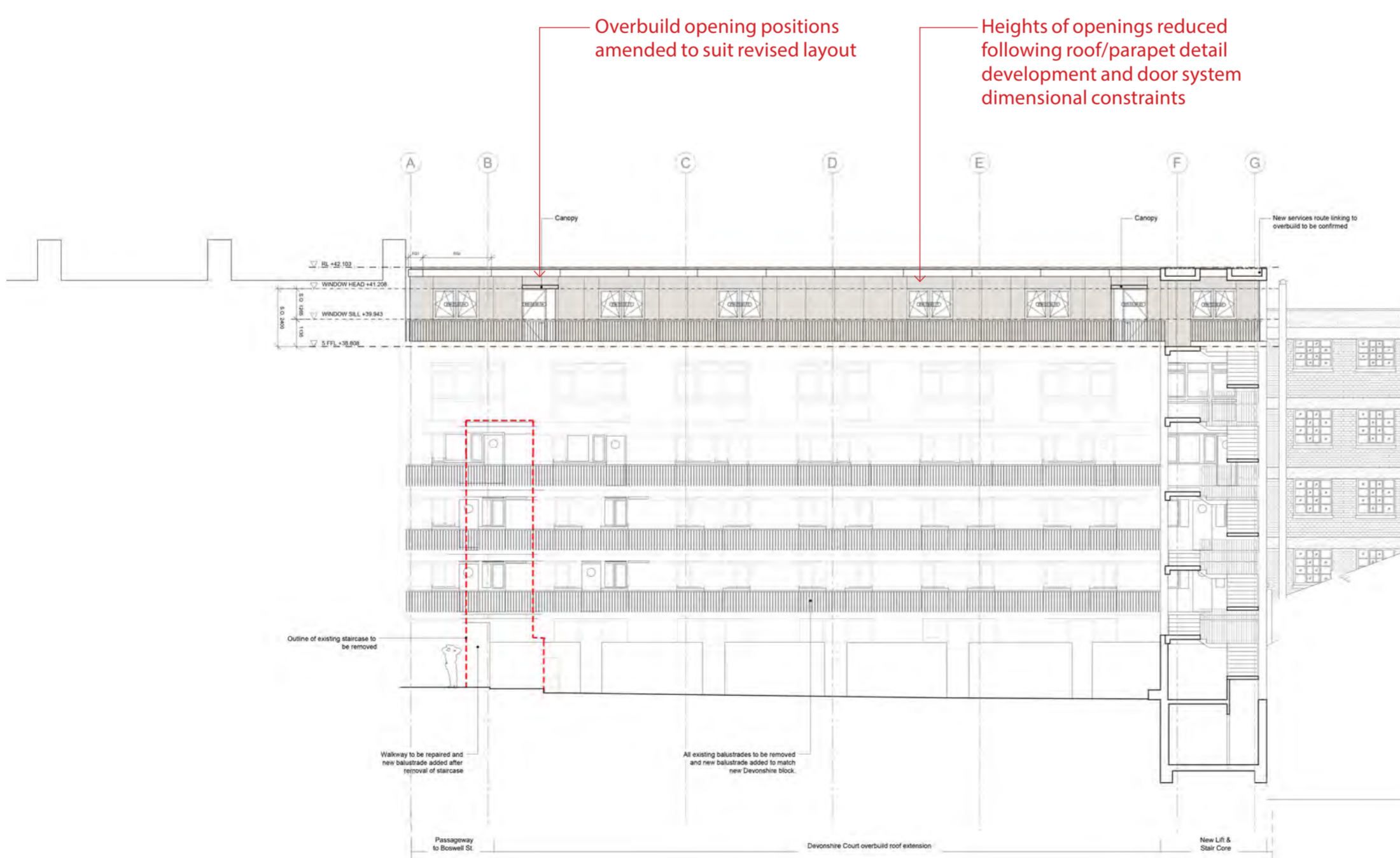
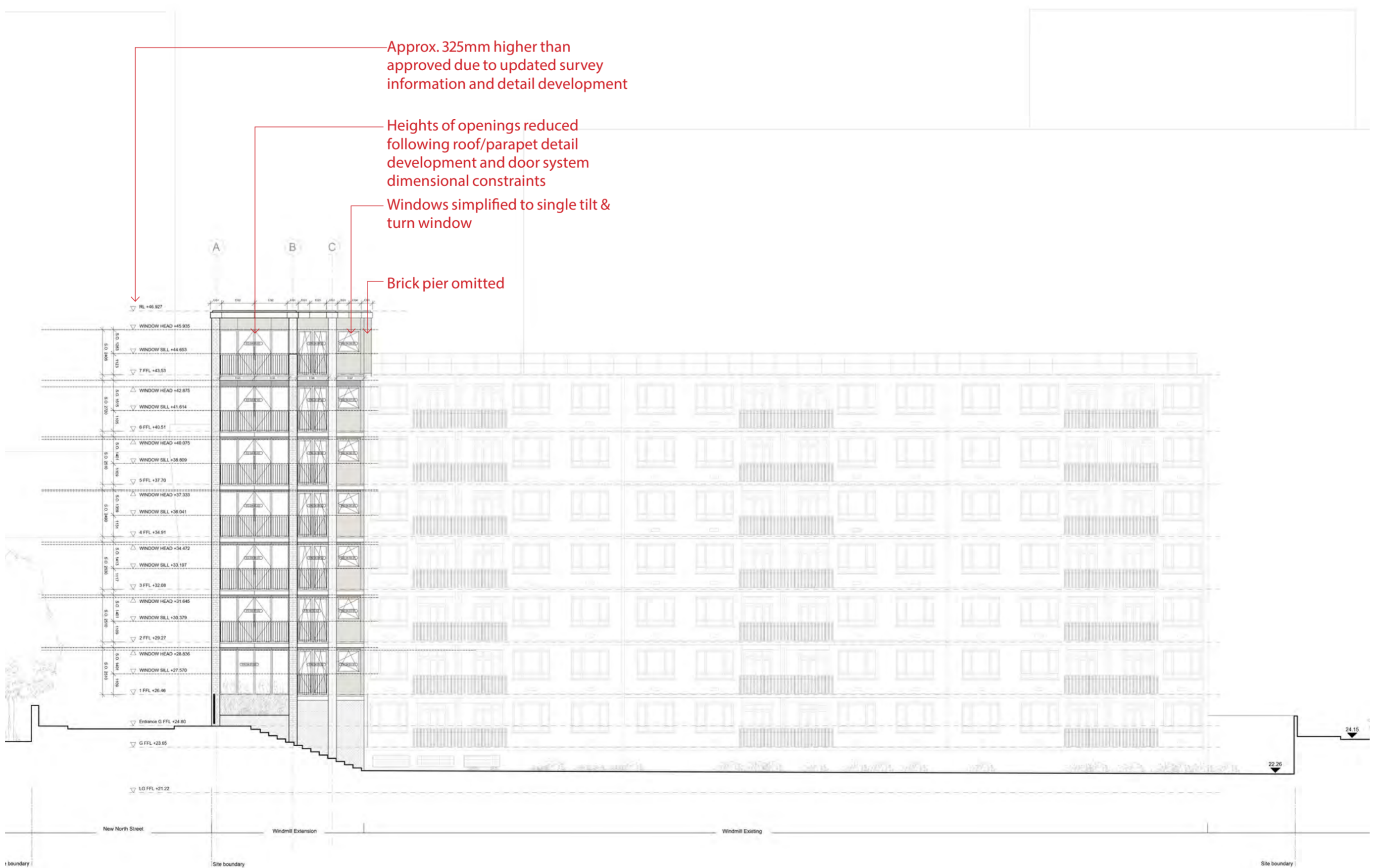


Devonshire - Approved E Elevation - Drawing no. 12026-PL-03-EL-201



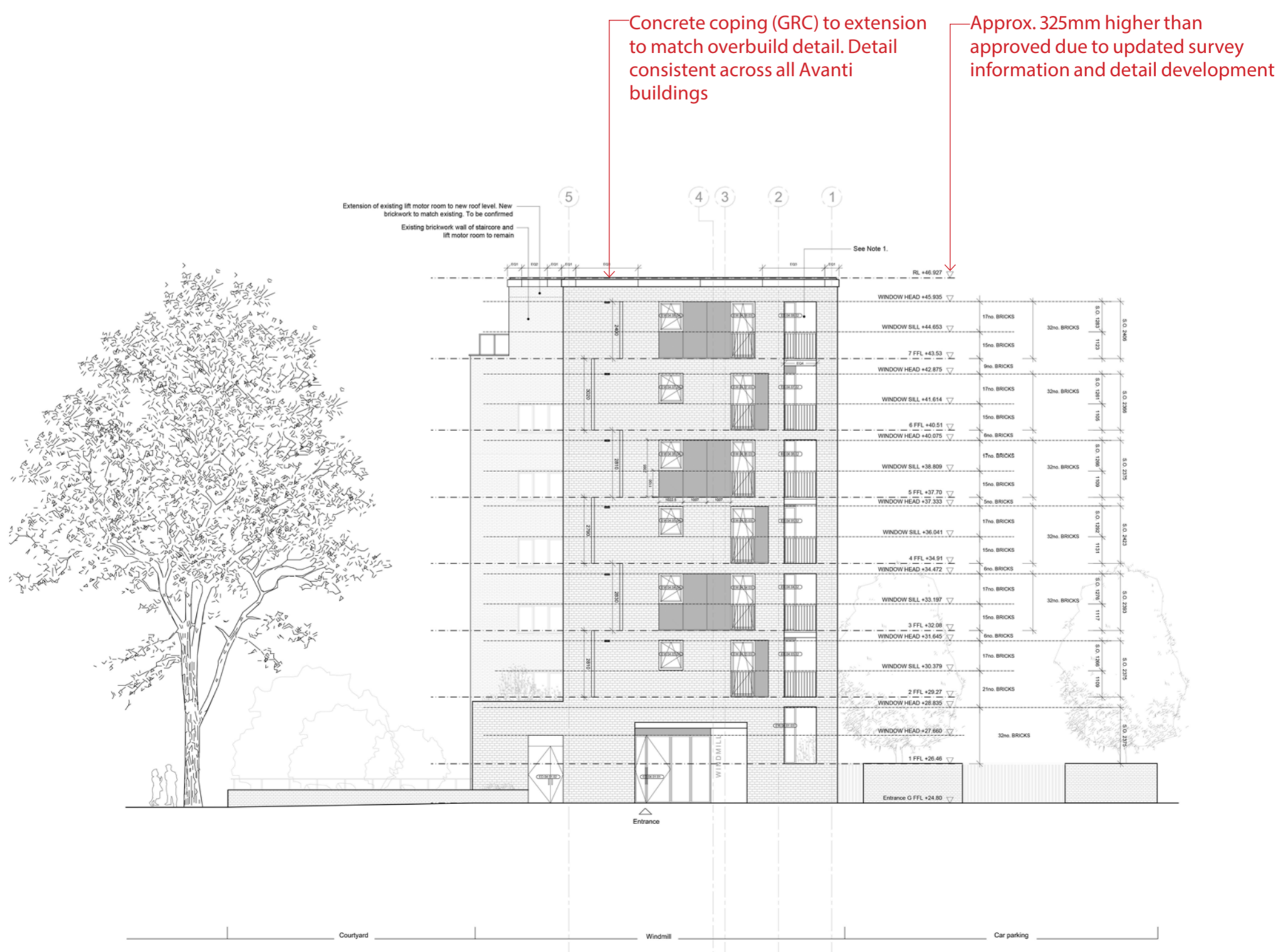


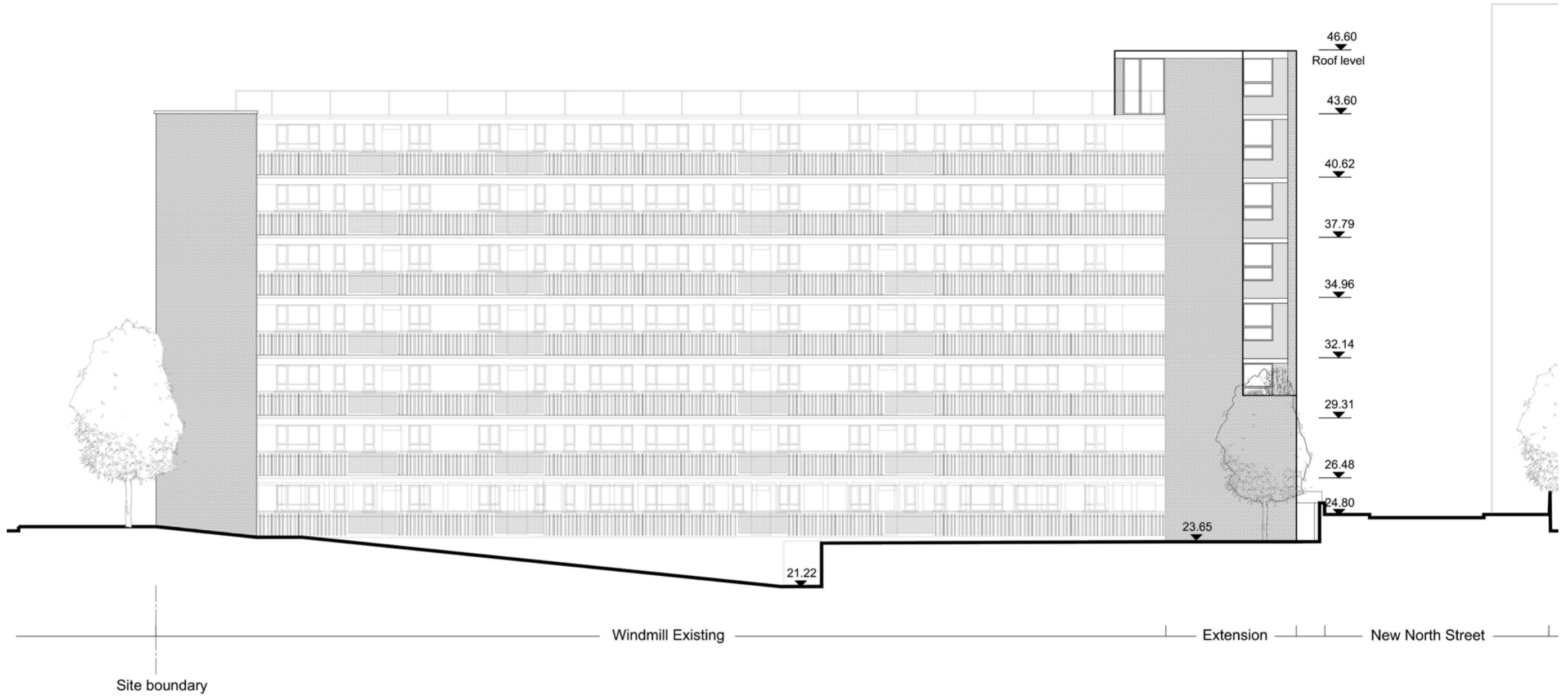
Windmill - Approved SE Elevation - Drawing no. 12026-PL-04-EL-201





Windmill - Approved SW Elevation - Drawing no. 12026-PL-04-EL-201





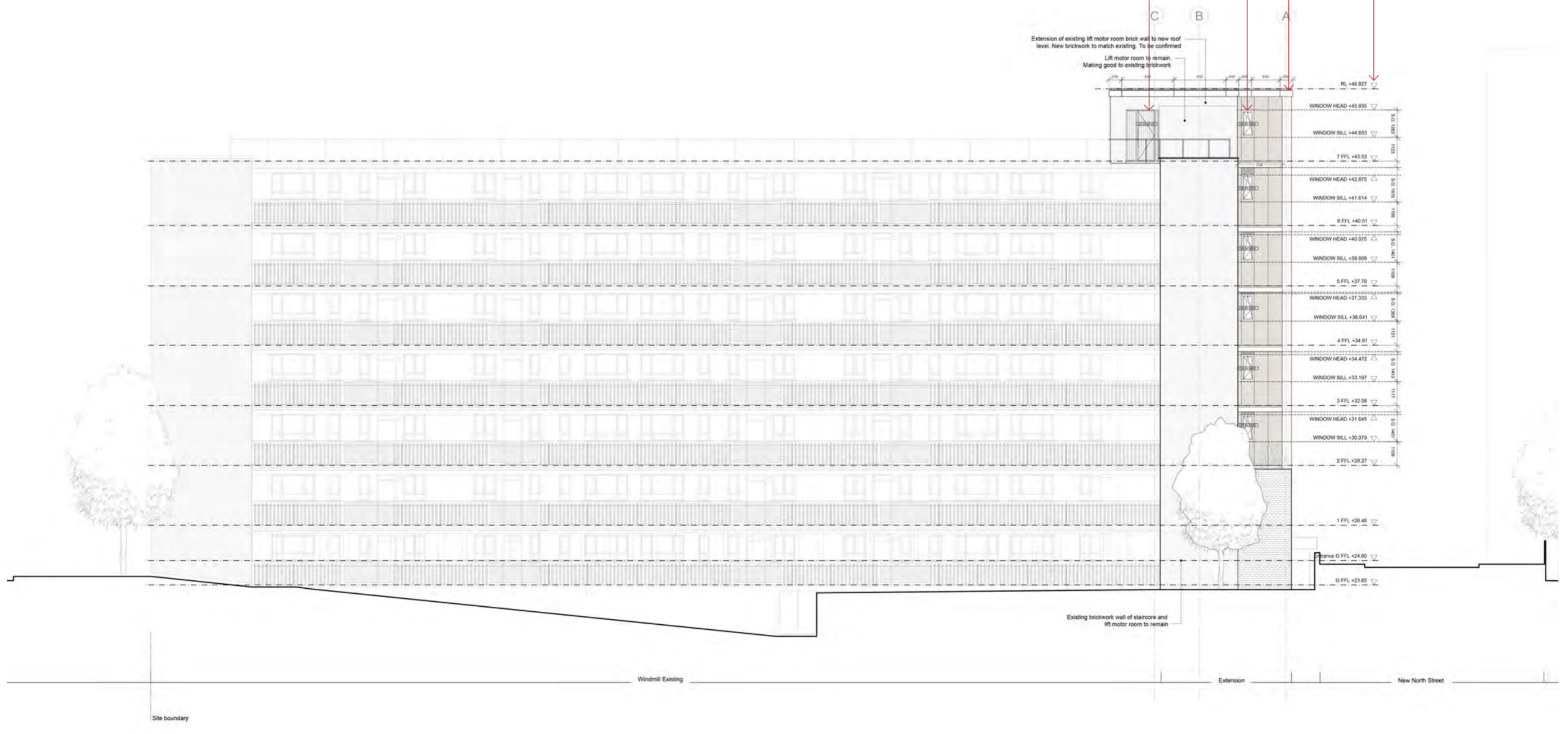
Windmill - Approved NW Elevation - Drawing no. 12026-PL-04-EL-201

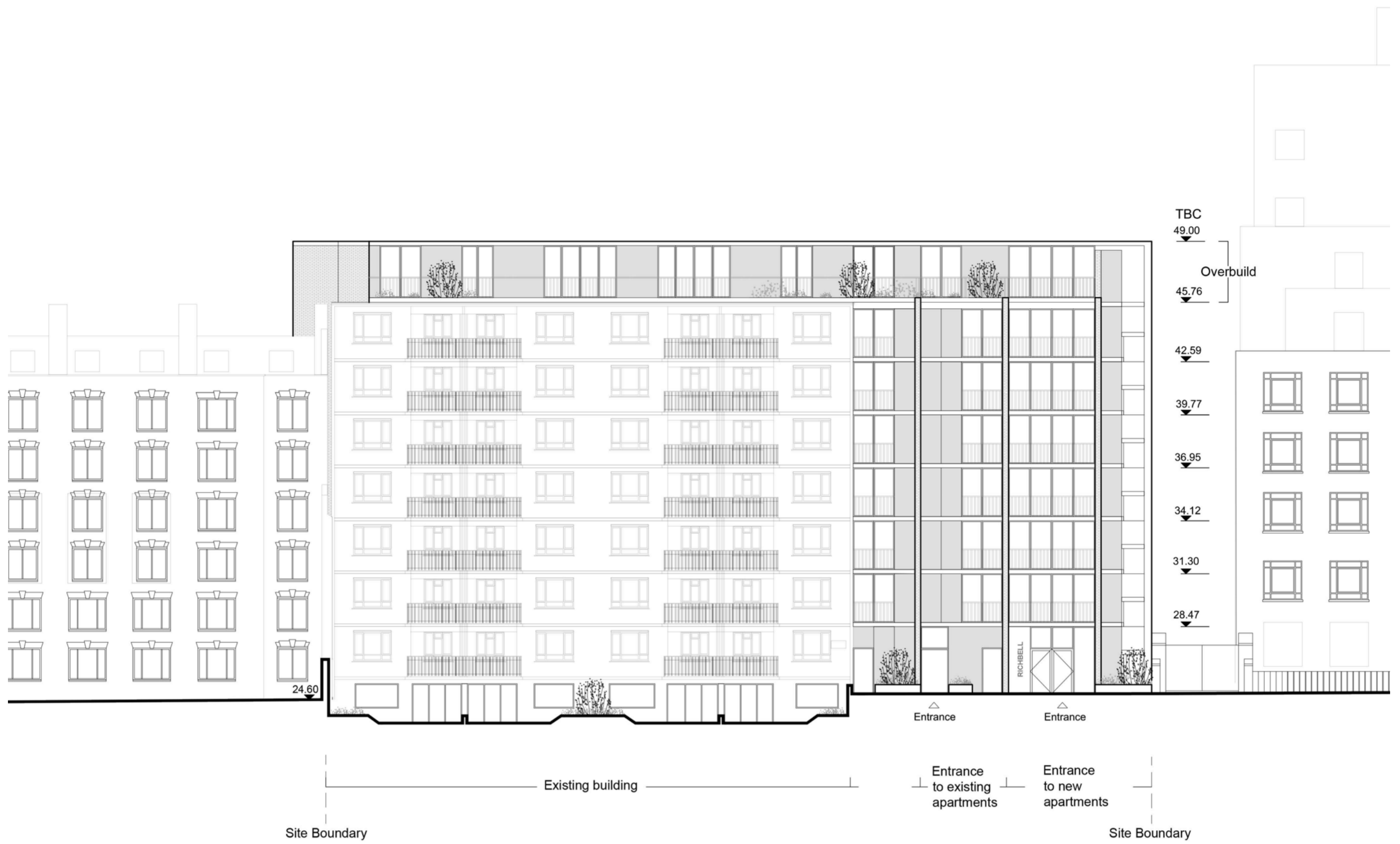
Approx. 325mm higher than approved due to updated survey information and detail development

Concrete coping (GRC) to extension to match overbuild detail. Detail consistent across all Avanti buildings

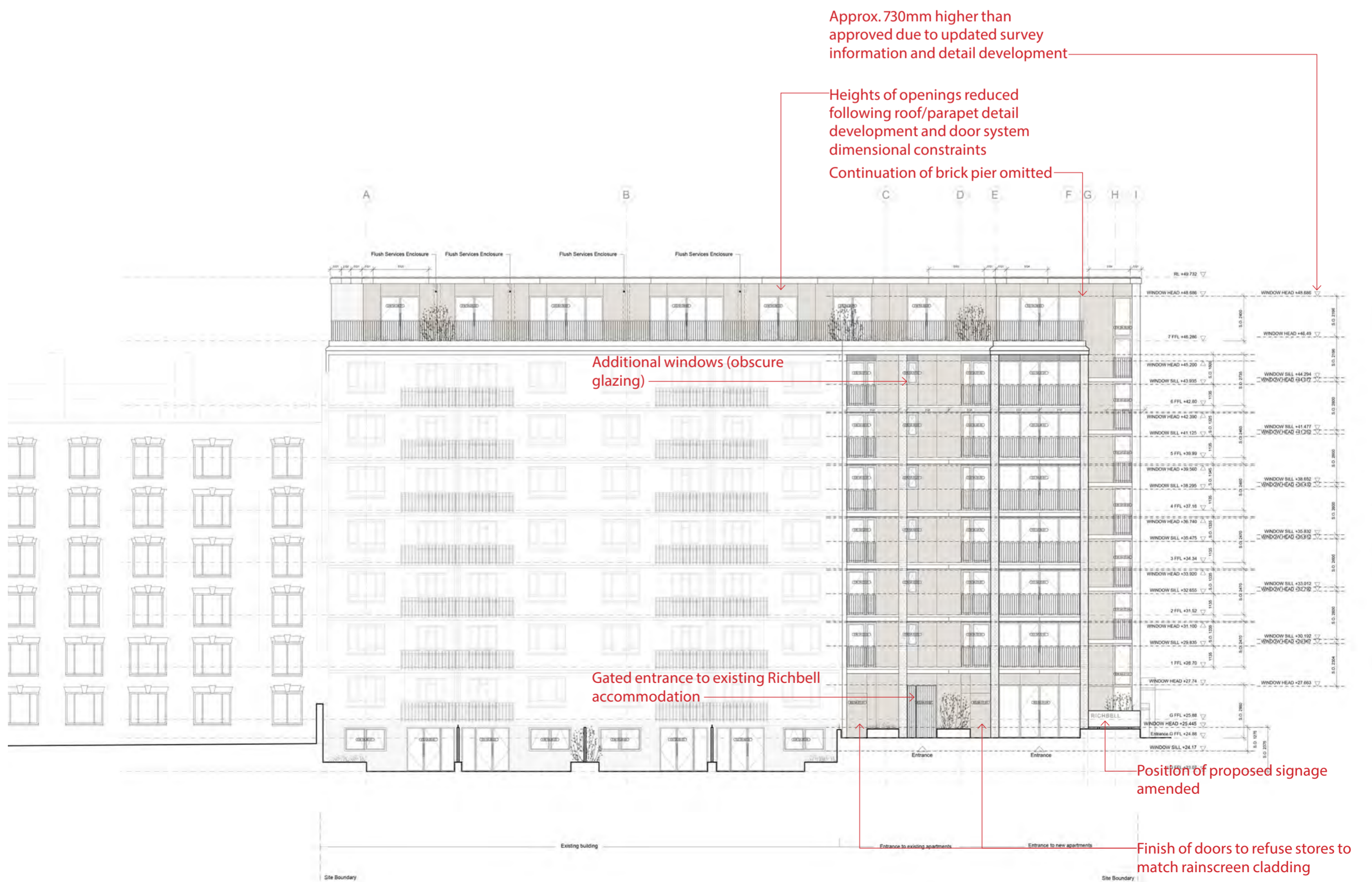
Opening dimensions reduced

Height of opening reduced





Richbell - Approved SW Elevation - Drawing no. 12026-PL-5A-EL-201





Richbell - Approved SE Elevation - Drawing no. 12026-PL-5A-EL-201

