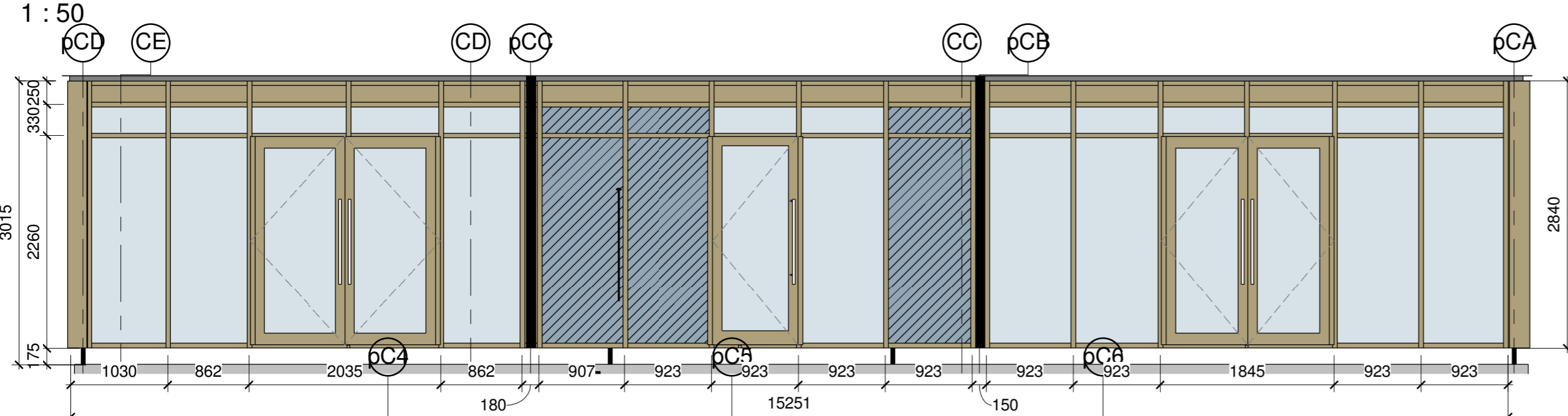
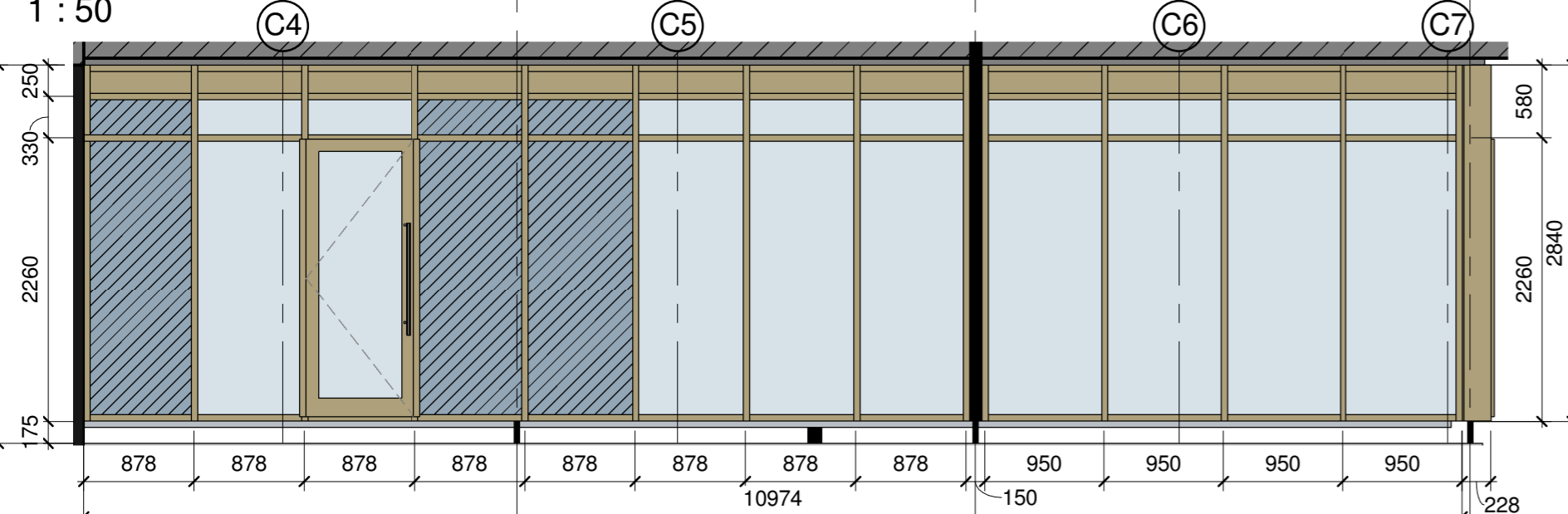


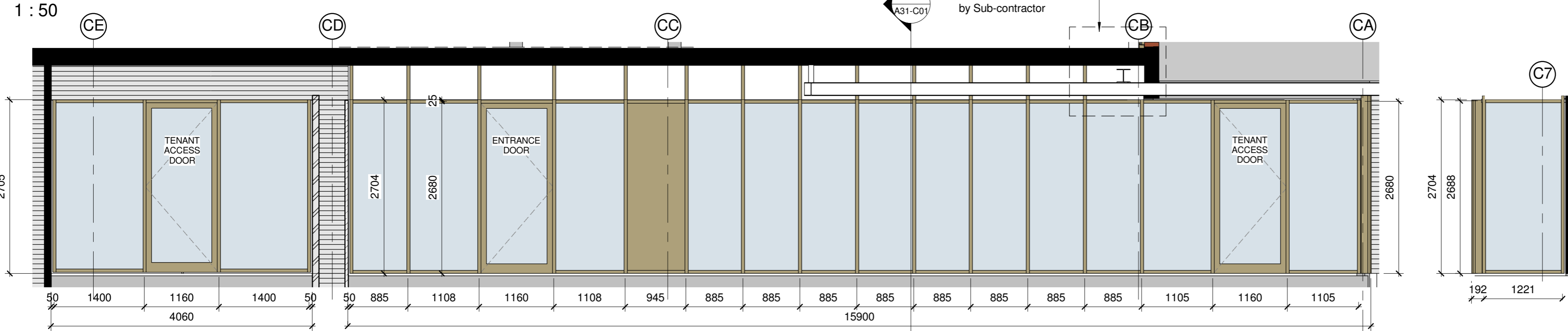
CW-C06 Elevation



CW-C05 Elevation



CW-C04 Elevation

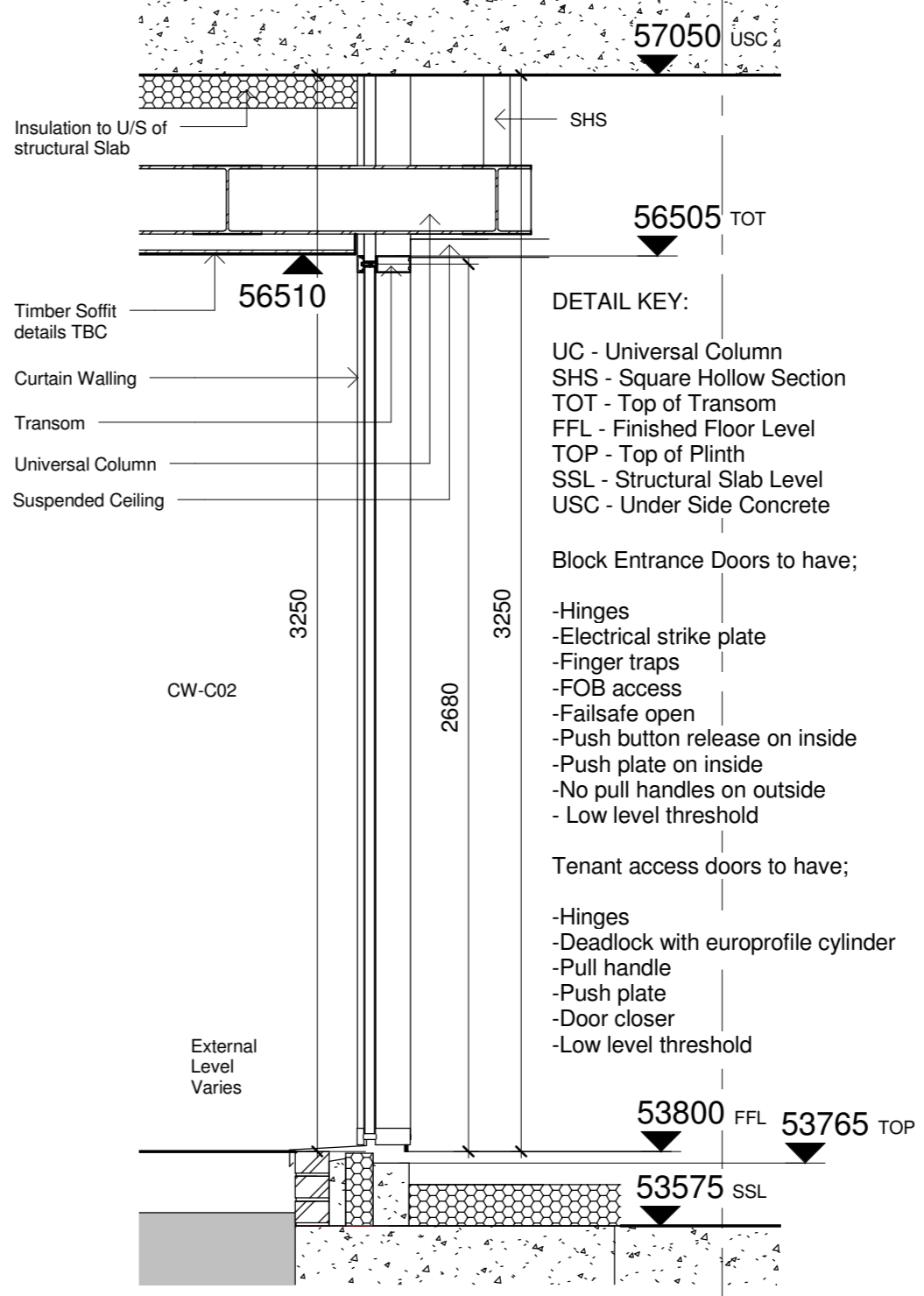


CW-C01 & CW-C02 Elevation

CW-C03 Elevation

Notes:

- All structural opening sizes to be measured on site prior to fabrication.
- Tolerances to be allowed for by sub-contractor.
- Mitred, sealed and crimped construction to Curtain Wall frames which are thermally broken and clear glazing internally beaded. Opaque glazing to be externally beaded.
- Sub contractors to provide samples for glazing shown as 'opaque' for approval.
- Glazed units to achieve a minimum U-Value of 1.13W/m²K overall.
- All glazing in critical locations is to be safety glass as defined in approved document K4 of the Building Regulations.
- Suitable protection of glazed units to be provided to prevent damage from works on site.
- All frames to be sealed externally and internally with silicone to BS5880 on a compressible polyethylene backing rod.
- Accessible opening mechanisms to be provided to disabled fit out rooms.



CW-C02 Section

1 : 20

Penthouse curtain walling to be read in conjunction with architects drawings 12316-A21-04 External Wall Details 4 Penthouse Wall Section

Detail to be reviewed by Sub-contractor

© WCEC ARCHITECTS - DISCLAIMER
 This drawing is copyright and shall not be reproduced or used for any other purpose without the written permission of the Architects. This drawing must be read in conjunction with all other related drawings and documentation. It is the contractors responsibility to ensure full compliance with the Building Regulations. Do not scale from this drawing, use figured dimensions only. It is the contractors responsibility to check and verify all dimensions on site. Any discrepancies to be reported immediately. IF IN DOUBT ASK. Materials not in conformity with relevant British or European Standards/Codes of practice or materials known to be deleterious to health & safety must not be used or specified on this project. Materials known to contain asbestos contaminated materials (ACM's) in the manufacture or installation process have not been specified and must not be used on this project.

This drawing is to be read in conjunction with the NBS specification for detailed window requirements and Ironmongery specifications.

Please refer to drawings A00-25, A00-26 and A00-27 for the weighted acoustic reduction value requirements.

Nb. Refer to drawing A31.4-01, 02 & -03 for Windows Schedule

- Key:**
- Opaque glazing panel. Refer to NBS spec for details.
 - Insulated Spandrel panel. Refer to NBS spec for details.

- DETAIL KEY:**
- UC - Universal Column
 - SHS - Square Hollow Section
 - TOT - Top of Transom
 - FFL - Finished Floor Level
 - TOP - Top of Plinth
 - SSL - Structural Slab Level
 - USC - Under Side Concrete

Block Entrance Doors to have;

- Hinges
- Electrical strike plate
- Finger traps
- FOB access
- Failsafe open
- Push button release on inside
- Push plate on inside
- No pull handles on outside
- Low level threshold

Tenant access doors to have;

- Hinges
- Deadlock with europrofile cylinder
- Pull handle
- Push plate
- Door closer
- Low level threshold

C	18.03.16	General updates, annotation, etc.	AM	DRJ
B	26.08.15	CW-C01 & CW-C02 setting out and plinth clarified, head support detail updated.	AM	DRJ
A	27.01.15	Curtain walling amended	PH	PH

No	Date	Description	By	Ckd
----	------	-------------	----	-----



PROJECT
West Hampstead Square

TITLE
Curtain Wall Details Block C

DRAWING STATUS

CONSTRUCTION			
DRAWN	MPS	CHECKED	DRJ
SCALE As indicated @ A2			
DATE 10/21/14			

wcec architects
 South Building, Staple Inn Buildings
 London, WC1V 7PZ
 t:020 3388 0019, e: email@wcec.co.uk, www.wcec.co.uk

JOB NO.	DRAWING NO.	REV
12-316	A31-C01	C