

This drawing is to be read in conjunction with the NBS specification for detailed window requirements and ironmongery specifications. It is the contractor's responsibility to ensure full compliance with the Building Regulations. Do not scale from this drawing, use figured dimensions only. It is the contractor's responsibility to check and verify all dimensions on site. Any discrepancies to be reported immediately. IF IN DOUBT ASK. Materials not in conformity with relevant British or European Standards/Codes of practice or materials known to be deleterious to health & safety must not be used or specified on this project. Materials known to contain asbestos contaminated materials (ACM's) in the manufacture or installation process have not been specified and must not be used on this project.

Key:

- Opaque glazing panel. Refer to NBS spec for details.
- Insulated Spandrel panel. Refer to NBS spec for details.

Notes:

All structural opening sizes to be measured on site prior to fabrication.

Tolerances to be allowed for by sub-contractor.

Mitred, sealed and crimped construction to Curtain Wall frames which are thermally broken and clear glazing internally beaded. Opaque glazing to be externally beaded.

Sub contractors to provide samples for glazing shown as 'opaque' for approval.

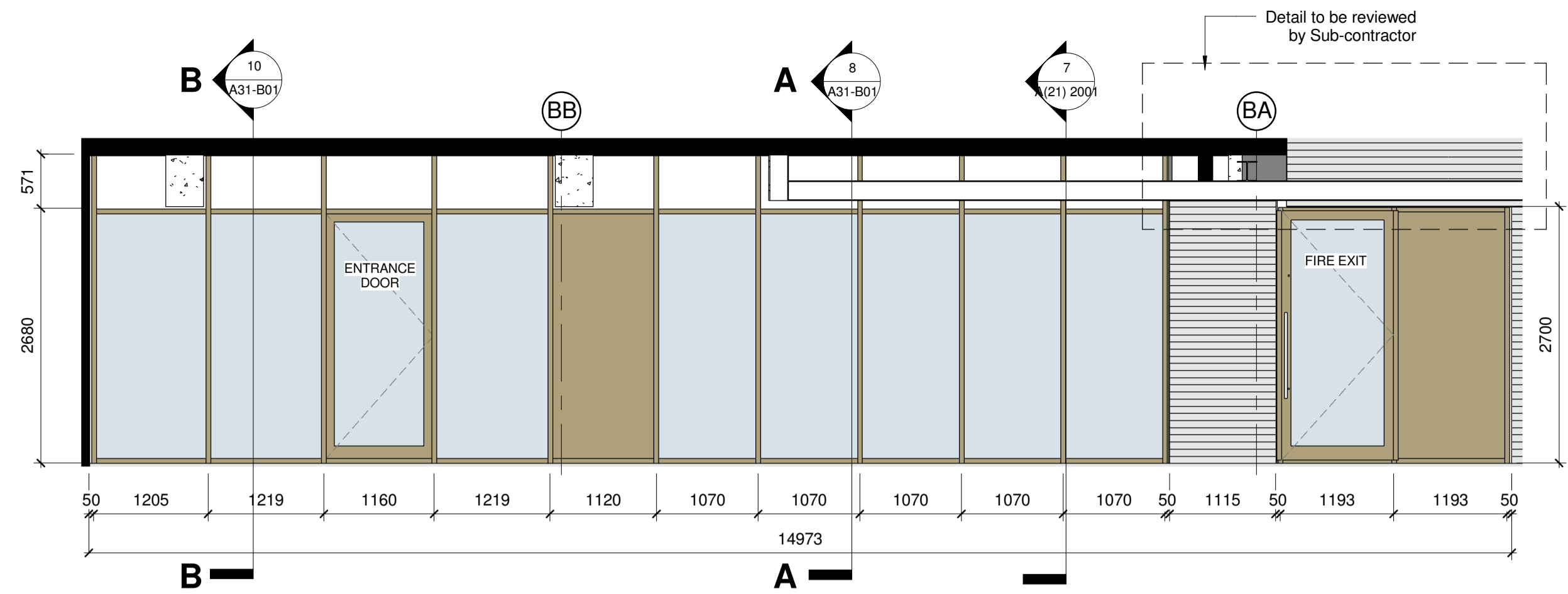
Glazed units to achieve a minimum U-Value of 1.13W/m²K overall.

All glazing in critical locations is to be safety glass as defined in approved document K4 of the Building regulations.

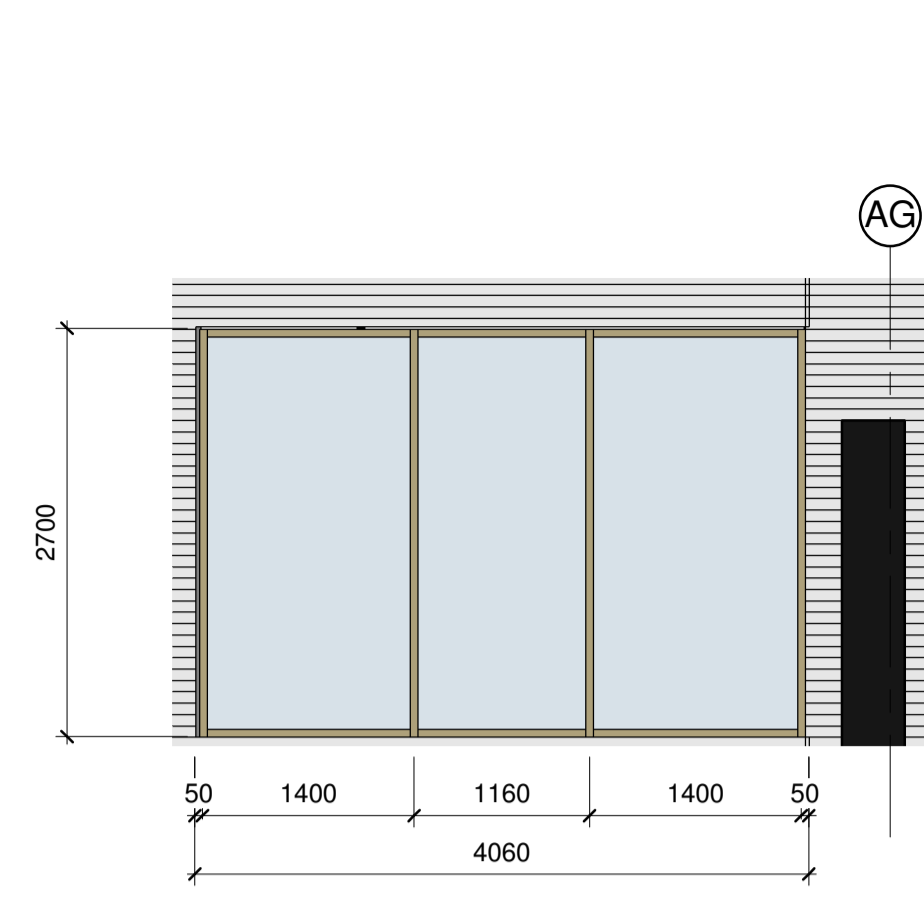
Suitable protection of glazed units to be provided to prevent damage from works on site.

All frames to be sealed externally and internally with silicone to BS5880 on a compressible polyethylene backing rod.

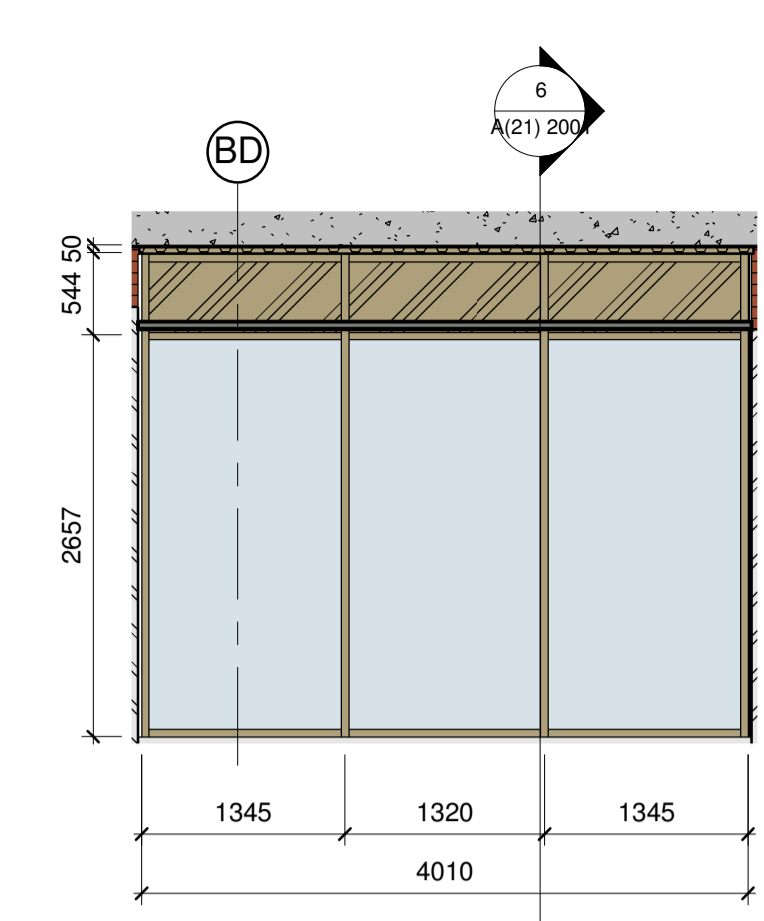
Accessible opening mechanisms to be provided to disabled fit out rooms.



CW-B01 Elevation
1 : 50

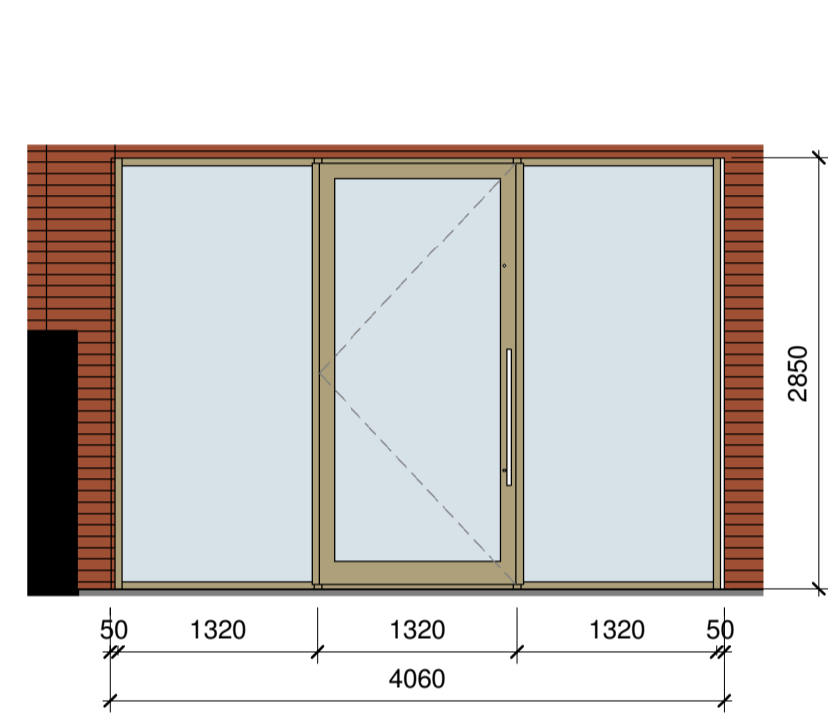


CW-B02 Elevation
1 : 50

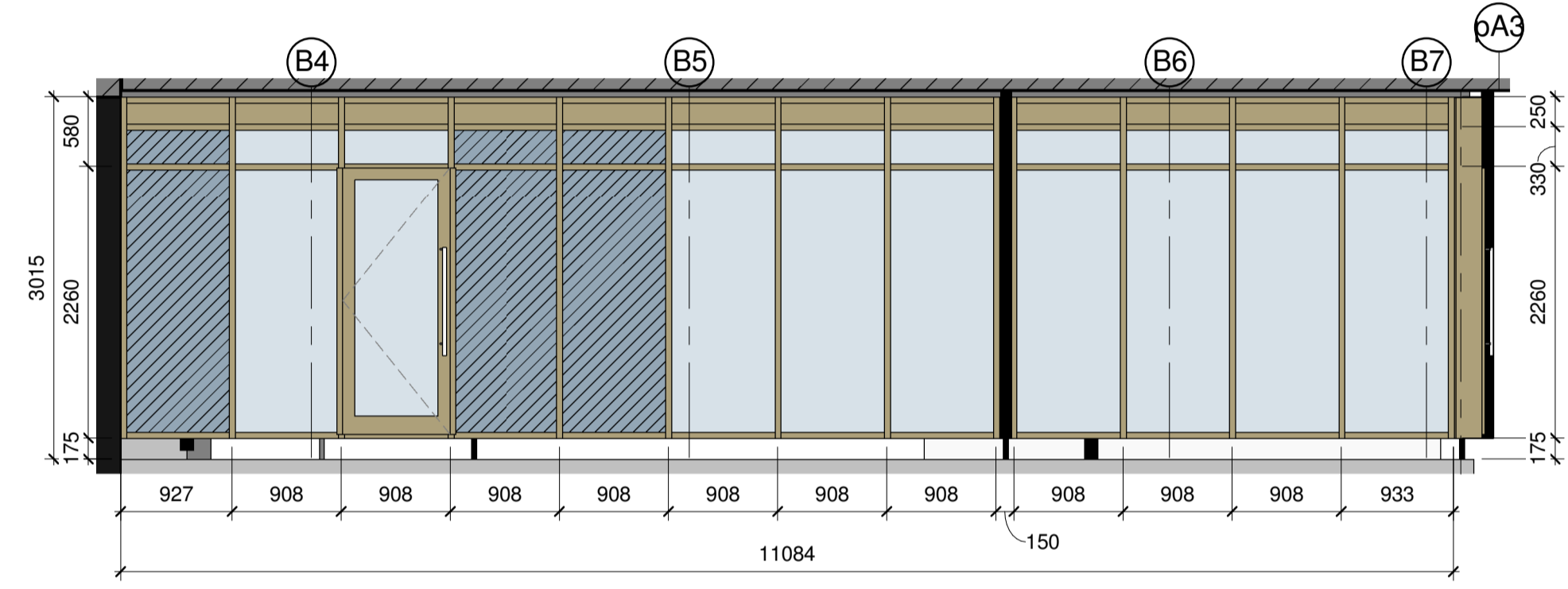


CW-B03 Elevation
1 : 50

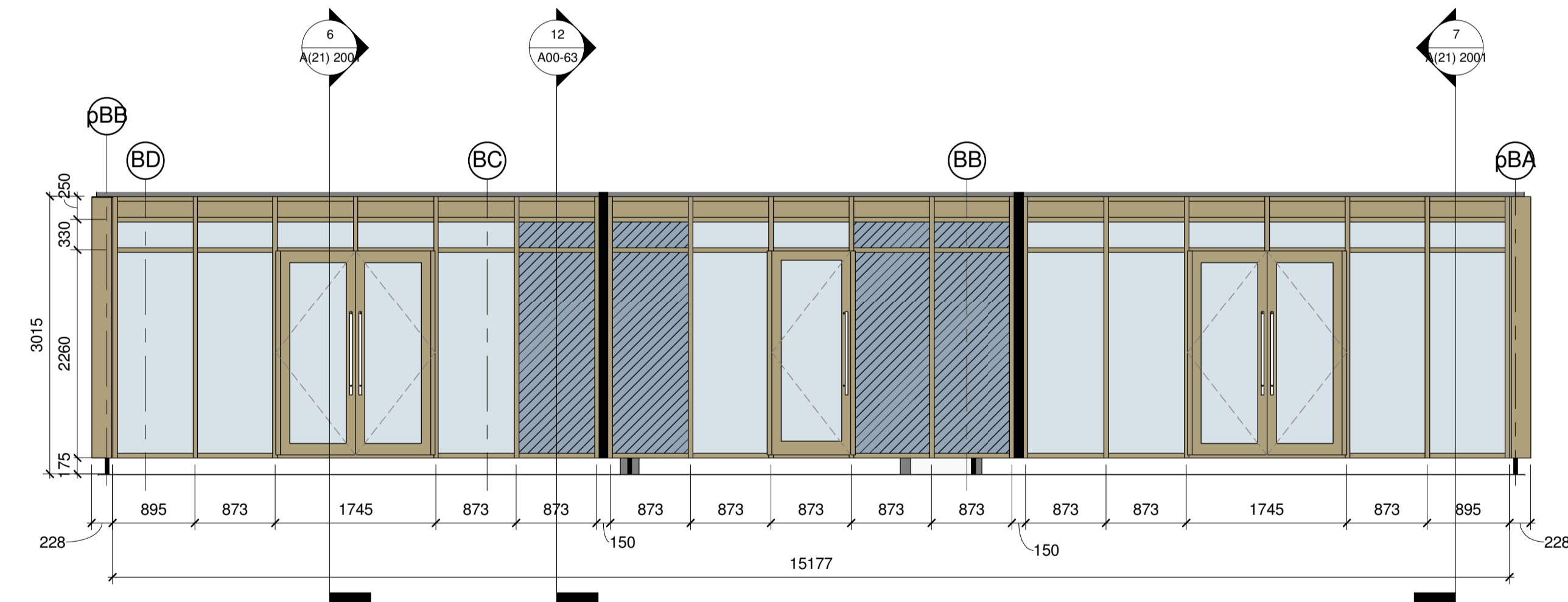
Penthouse curtain walling to be read in conjunction with architects drawings 12316-A21-04 External Wall Details 4 Penthouse Wall Section



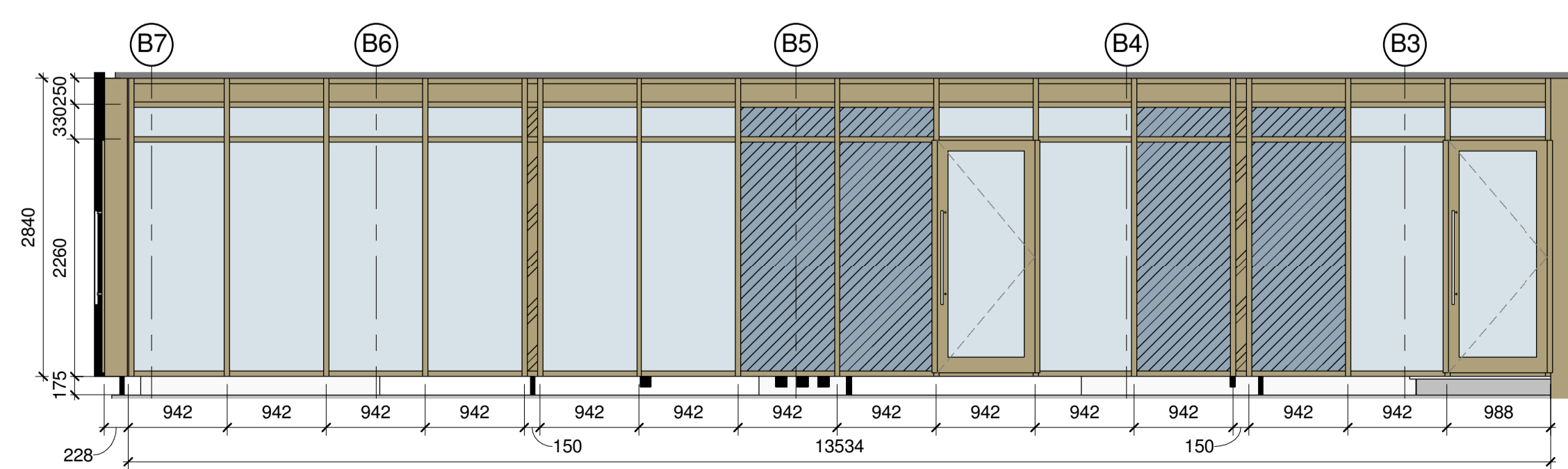
CW-B04 Elevation
1 : 50



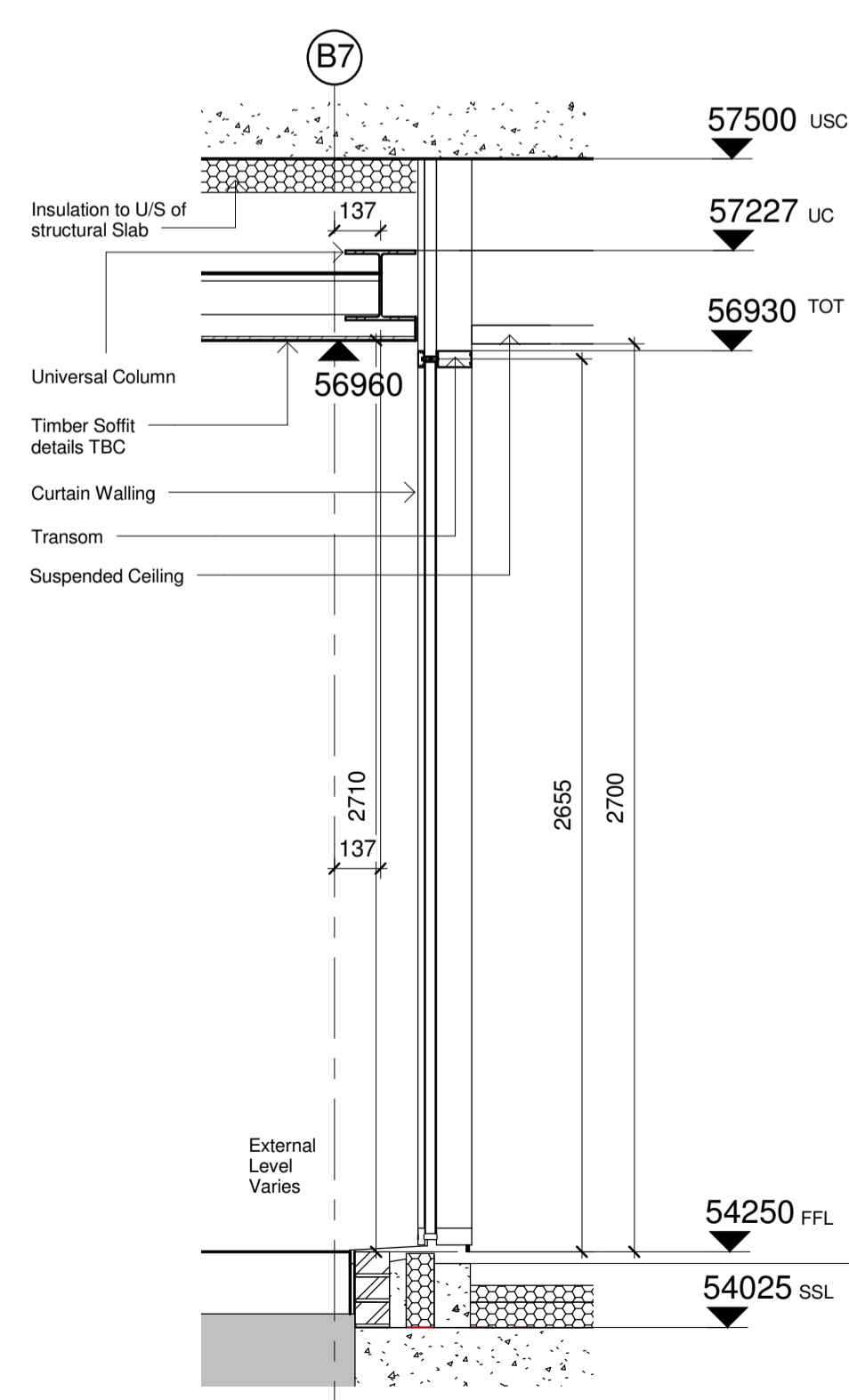
CW-B05 Elevation
1 : 50



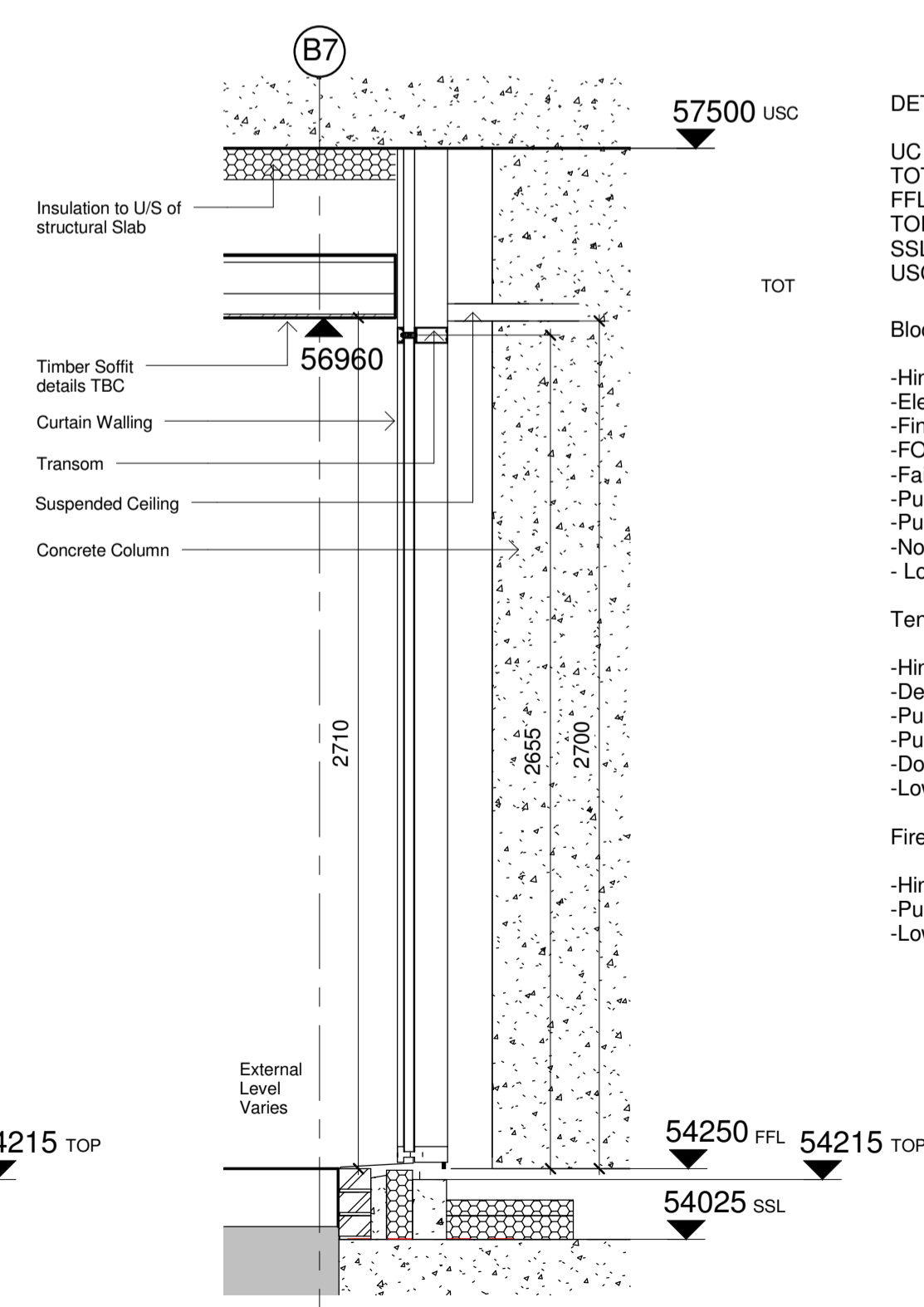
CW-B06 Elevation
1 : 50



CW-B07 Elevation
1 : 50

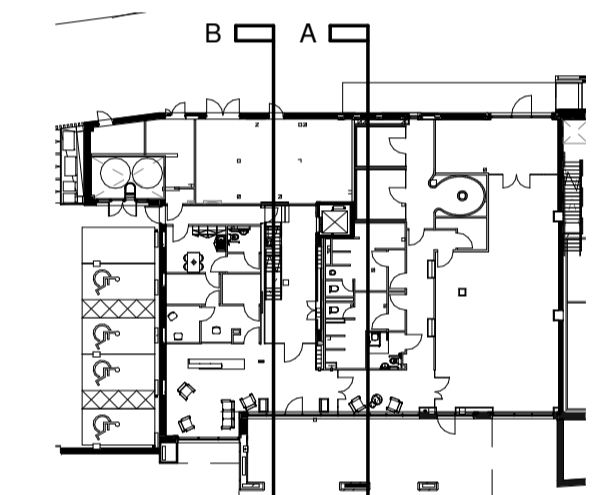


CW-B01 Section A-A
1 : 20



CW-B01 Section B-B
1 : 20

Section Key Plan:



Block B A31 Key Plan
1 : 500

DETAIL KEY:

- UC - Universal Column
 - TOT - Top of Transom
 - FFL - Finished Floor Level
 - TOP - Top of Plinth
 - SSL - Structural Slab Level
 - USC - Under Side Concrete
- Block Entrance Doors to have;
- Hinges
 - Electrical strike plate
 - Finger traps
 - FOB access
 - Failsafe open
 - Push button release on inside
 - Push plate on inside
 - No pull handles on outside
 - Low level threshold
- Tenant access doors to have;
- Hinges
 - Deadlock with europrofile cylinder
 - Pull handle
 - Push plate
 - Door closer
 - Low level threshold
- Fire Exit to have;
- Hinges
 - Push pad emergency furniture
 - Low level threshold

No	Date	Description	By	Ckd
G	18.03.16	General updates, annotation, etc.	AM	DRJ
F	30.01.16	Fire Exit door added to CW-B04	AM	DRJ
E	21.01.16	CW-B01 and CW-B02 revised to relocate fire exit	AM	DRJ
D	04.09.15	Brickwork added to BA/B7 for lintol support to Podium Bricks above.	AM	AW
C	27.08.15	CW-B01, CW-B02 & CW-B04 setting out and plinth clarified, head support detail updated.	AM	DRJ
B	29.01.15	Door added to block B GF CW	DRJ	PH
A	27.01.15	Curtain walling amended	PH	PH



PROJECT
West Hampstead Square

TITLE
Curtain Wall Details Block B

DRAWING STATUS			
CONSTRUCTION			
DRAWN	MPS	CHECKED	DRJ
SCALE As indicated @ A1			
DATE 10/22/14			



JOB NO.	DRAWING NO.	REV
12-316	A31-B01	G