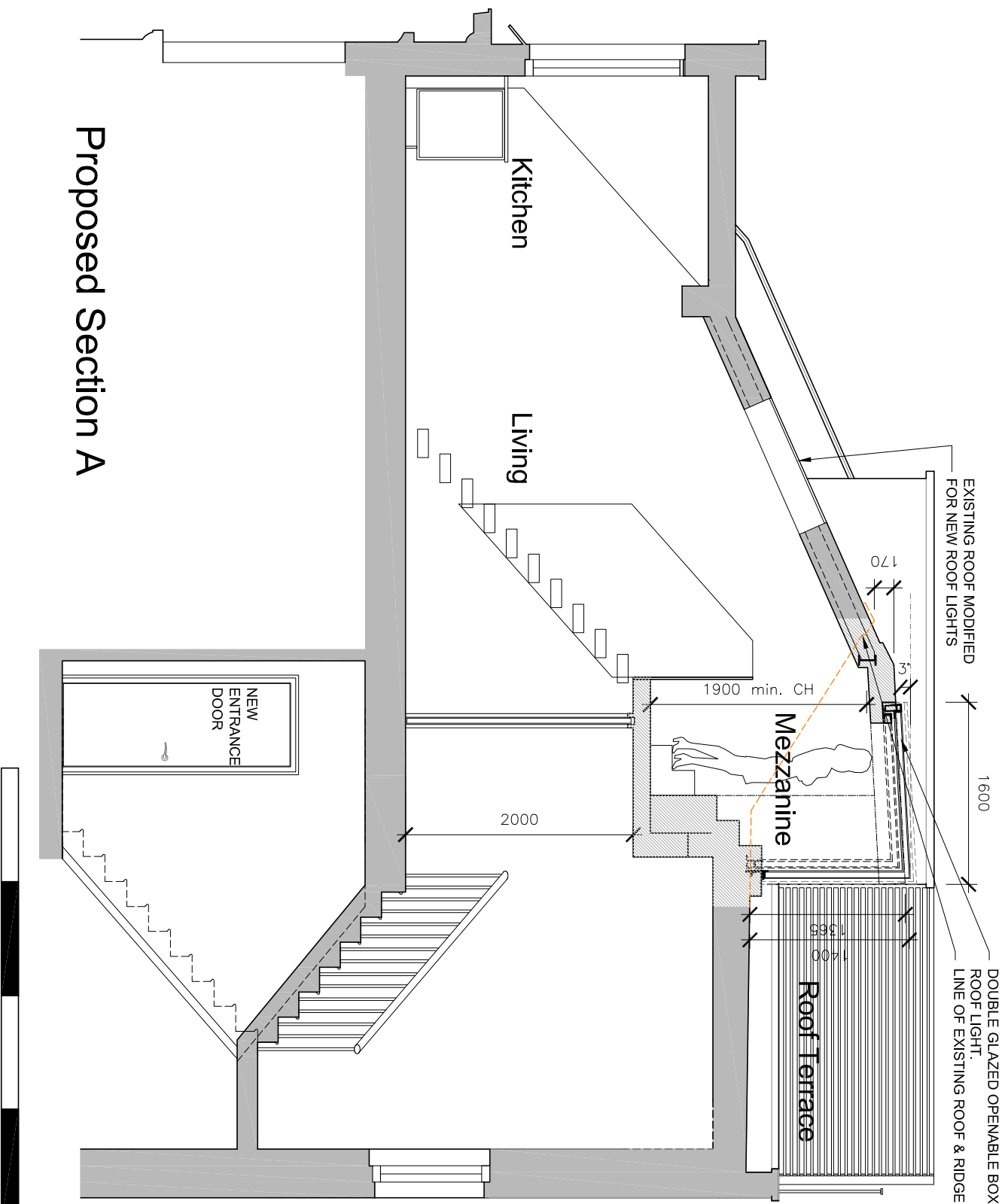
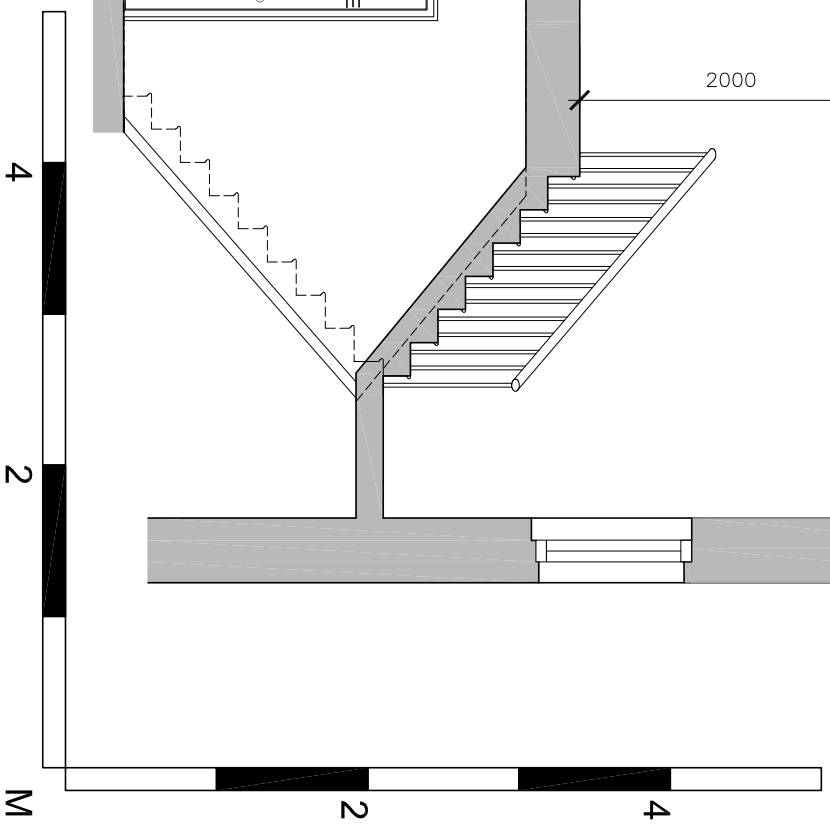


### Existing Section A

NOTE: **ORANGE** LINE DENOTES ITEM TO BE REMOVED



### Proposed Section A



#### general notes

THIS DRAWING IS COPYRIGHT OF CLIFTON INTERIORS LTD. THIS DRAWING MUST BE READ IN CONJUNCTION WITH THE DESIGNERS RISK ASSESSMENT, SPECIFICATION AND ALL OTHER RELEVANT DOCUMENTATION AND DRAWINGS. CLIFTON INTERIORS LTD ACCEPTS NO LIABILITY FOR ANY EXPENSE, LOSS OR DAMAGE OF WORKS OR MATERIALS AND COMPONENTS ARISING FROM ANY ACTION TAKEN OR NOT TAKEN IN ACCORDANCE WITH THE EXCLUSIONS OF LIABILITY IN THE CONTRACT DOCUMENTS WHICH HAS NOT BEEN REVISED TO THE STANDARD FORM APPROVAL OBTAINED.

DO NOT SCALE FROM THIS DRAWING OR THE COMPUTER DIGITAL DATA, ONLY FIGURED DIMENSIONS ARE TO BE USED.

IF IN DOUBT ASK

**purpose of issue**  
**PLANNING**

#### notes

\* do not scale from this drawing.

\* check all dimensions on site.

#### project name

CATILIN SINCLAIR  
APARTMENT 4  
120 GLOUCESTER AVENUE  
NW1 LONDON

#### drawing title

CLIFTON INTERIORS  
EXISTING & PROPOSED  
SECTION A

scale 1 TO 50 @ A3  
drawn by MZ

date 18.03.16  
checked --

project ref 1601  
drawing no. 1601-P-X-200

revision #

**CLIFTON INTERIORS LTD**  
168 Regent's Park Road  
Pimrose Hill, London NW1 8XN  
t : 020 7586 5533  
f : 020 7586 1987  
e : info@cliftoninteriors.com  
www.cliftoninteriors.com