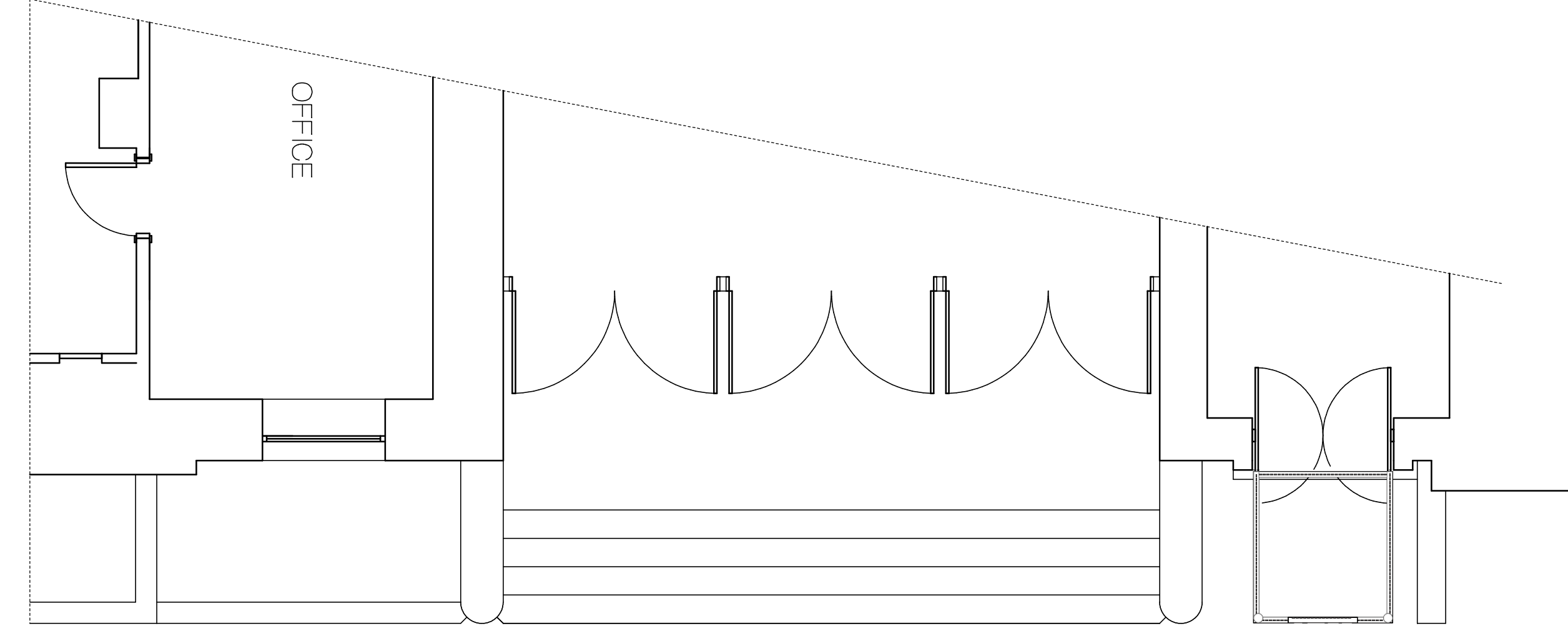


Existing part front plan
Scale 1:50 at A0



Proposed part front plan
Scale 1:50 at A0



Proposed canopy sign plan
Scale 1:10 at A0

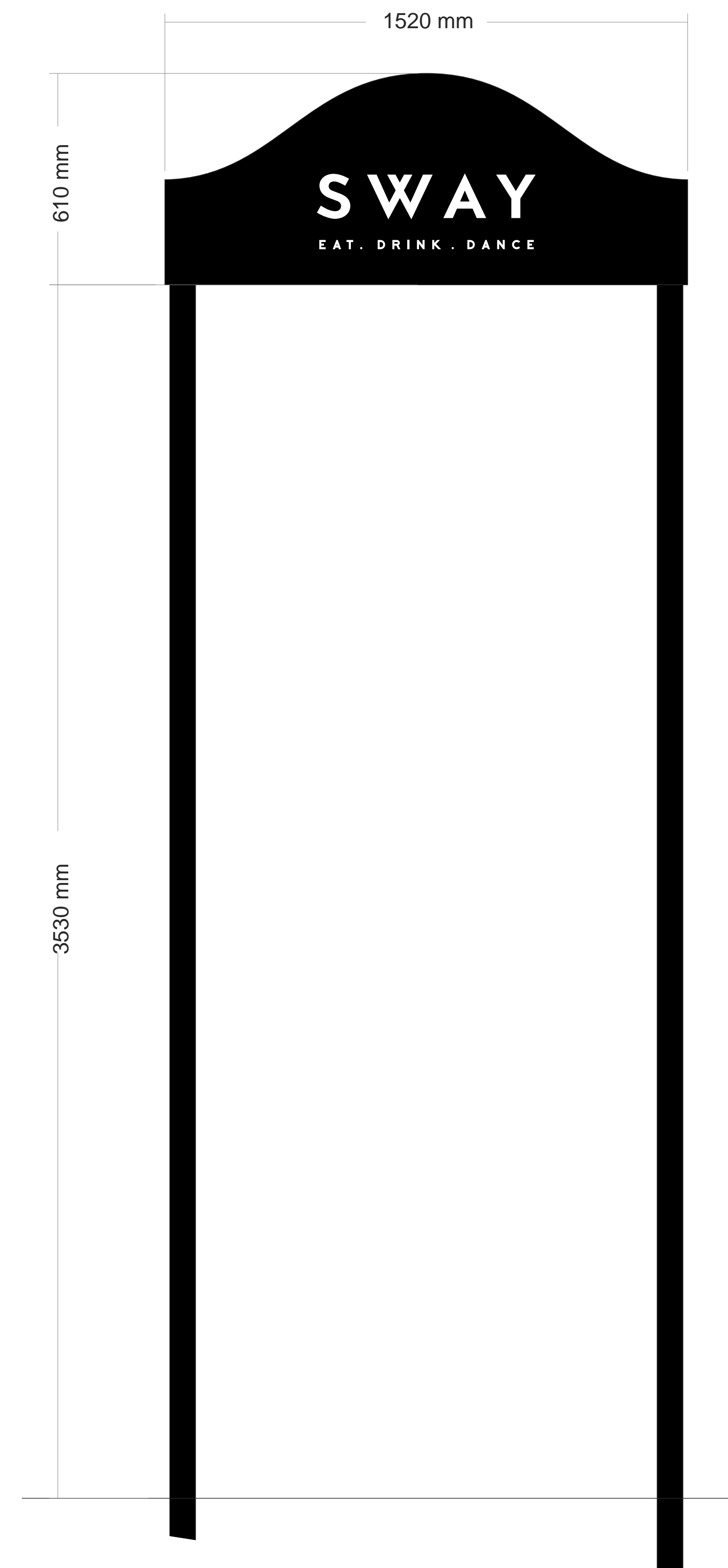
- Sign to be secured back to existing aluminium box.
- Warm white LED housed within U channel framework. Led to light onto internal walls and ceiling of the canopy which will be finished metallic gold.
- 3mm thick aluminium fabricated canopy cover to all four sides and top. Top to follow curve of face. External of panels to be finished black, internal to be finished metallic gold.
- 100mm diameter posts set in core drilled foundation.
- Aluminium box behind aperture cut face panel to house LED to light through apertures
- Aperture cut face to be backed off with 5mm opal acrylic to illuminate.



Existing front elevation Scale 1:50



Proposed front elevation Scale 1:50



Proposed canopy sign
Scale 1:10 at A0



Proposed canopy sign section
Scale 1:10 at A0