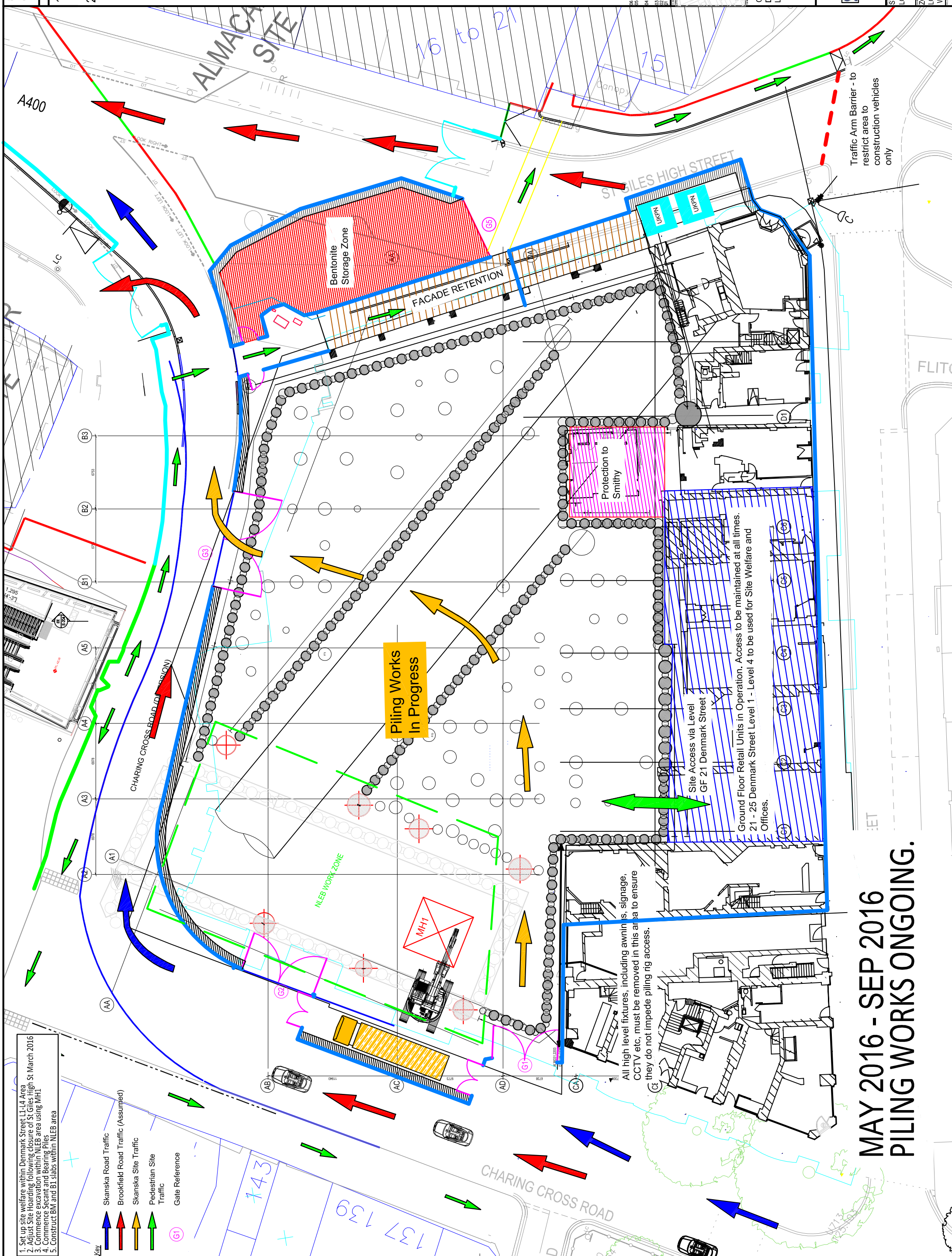


1. Set up site welfare within Denmark Street L1-L4 Area
2. Adjust Site Hoarding following closure of St Giles High St March 2016
3. Commence excavation within NLEB area using MH1
4. Construct BM and B1 slabs within NLEB area

- Key**
- Skanska Road Traffic
 - Brookfield Road Traffic (Assumed)
 - Skanska Site Traffic
 - Pedestrian Site Traffic
 - Gate Reference



MAY 2016 - SEP 2016
PILING WORKS ONGOING.

NOTES

- Expected Vehicle Movements = 55/day
- Week numbers based on Stage 3 programme

SKANSKA

Consolidated Developments Limited

ST GILES CIRCUS, LONDON WC1

ZONE 1 & 2 LOGISTICS STAGE 1 Wks 1 - 18 (May16 - Sep16)

19.06.15

SKA-LOG-001 06

REVISED FOLLOWING COMMENTS NK 07/01/16

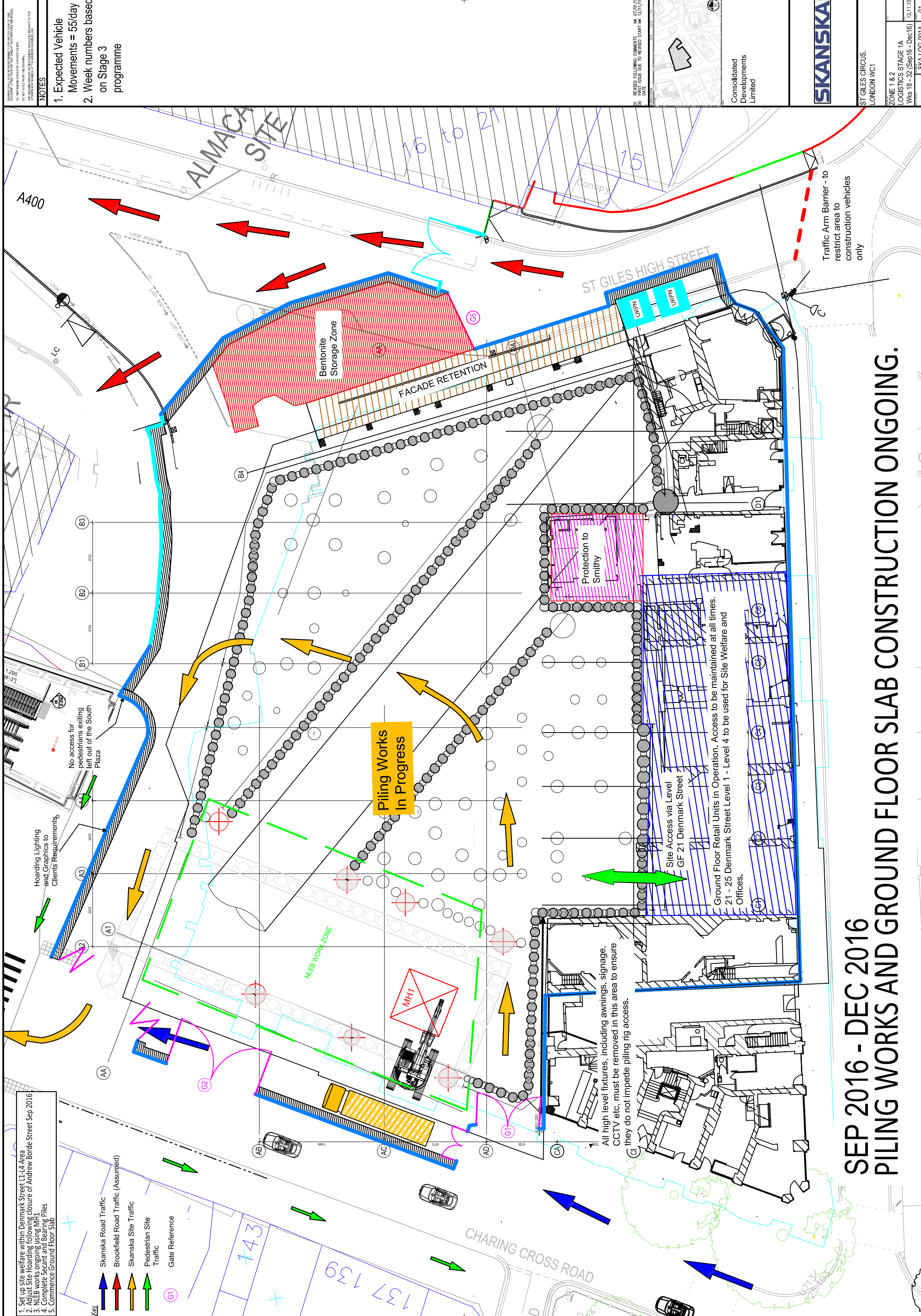
REVISED FOLLOWING ST GILES CIRCUS NK 12/11/15

CONSTRUCTION MEETING ST GILES CIRCUS NK 18/09/15

WORKING GROUP MEETING 03.08.15

REVISED FOLLOWING INTERNAL REVIEW NK 10/09/15

REVISED FOLLOWING COMMENTS NK 06/07/15



1. Set up site welfare within Denmark Street L1-L4 Area
2. Adjust Site Hoarding following Closing Closure of Andrew Borde Street Sep 2016
3. NLEB Works ongoing using MH1
4. Complete Secant and Bearing Piles
5. Commence Ground Floor Slab

- Key**
- Skanska Road Traffic
 - Brookfield Road Traffic (Assumed)
 - Skanska Site Traffic
 - Pedestrian Site Traffic
 - Gate Reference

- NOTES**
1. Expected Vehicle Movements = 55/day
 2. Week numbers based on Stage 3 programme

REVISIONS: THIS DOCUMENT IS THE PROPERTY OF SKANSKA. IT IS TO BE USED FOR THE PROJECT ONLY AND NOT TO BE REPRODUCED OR TRANSMITTED IN ANY FORM OR BY ANY MEANS, ELECTRONIC OR MECHANICAL, INCLUDING PHOTOCOPYING, RECORDING, OR BY ANY INFORMATION STORAGE AND RETRIEVAL SYSTEM. ALL INFORMATION SHOULD BE CHECKED ON SITE. DO NOT SCALE FROM THIS DRAWING. ANY DISCREPANCIES BETWEEN THIS DRAWING AND THE ACTUAL SITUATION SHALL BE REPORTED TO THE PROJECT MANAGER IMMEDIATELY. THE PROJECT MANAGER SHALL BE RESPONSIBLE FOR THE ACCURACY OF THE INFORMATION PROVIDED.

REVISED FOLLOWING COMMENTS: NK 07/01/16
DATE: 07/01/16
DUE TO: TO BE STARTED START NK 12/11/16

SKANSKA

Consolidated Developments Limited

ST GILES CIRCUS,
LONDON WC1

ZONE 1 & 2
LOGISTICS STAGE 1A
Wks 18 - 32 (Sep16 - Dec16) 12.11.15

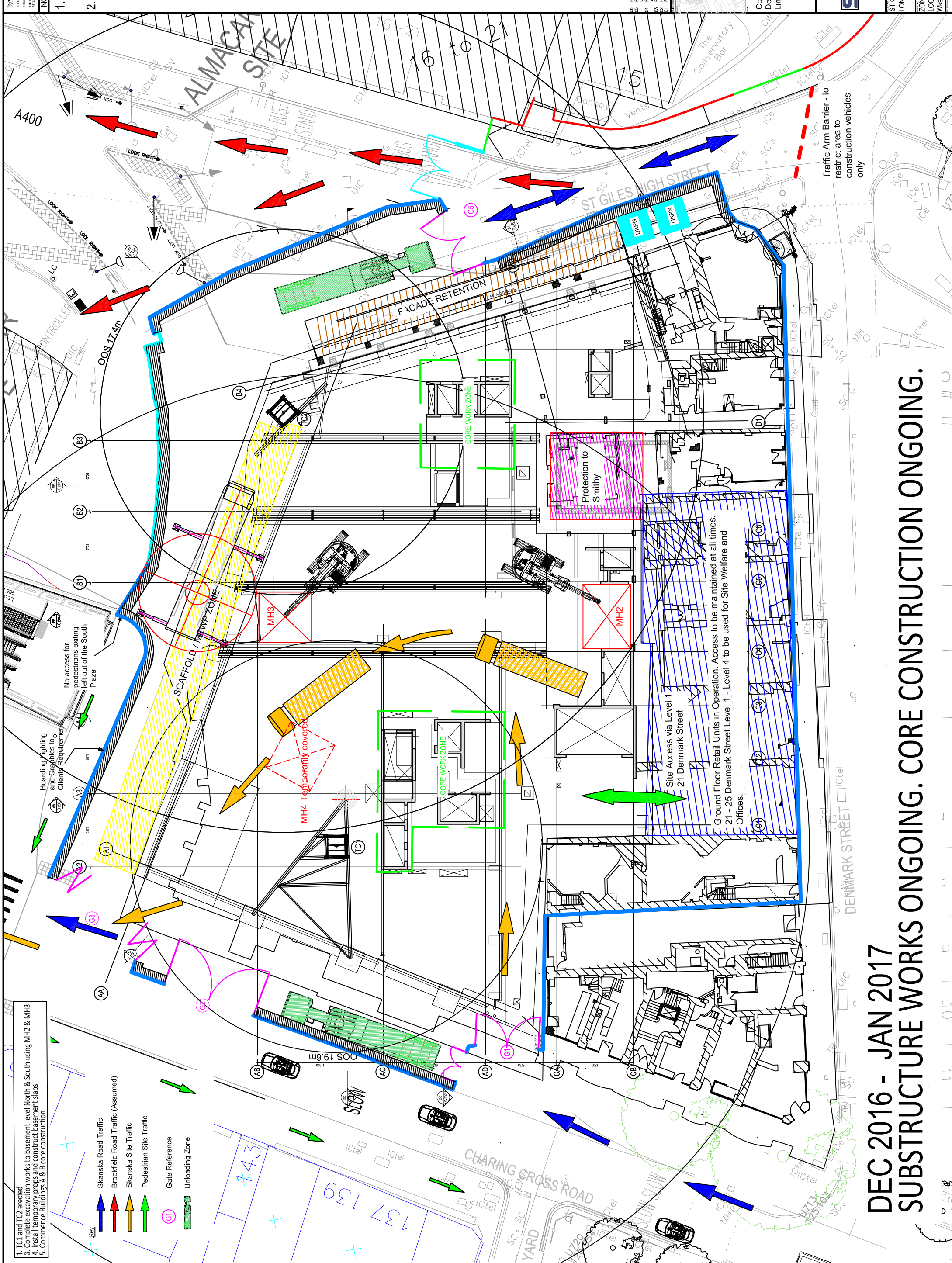
SKA-LOG-001A 01

SEP 2016 - DEC 2016 PILING WORKS AND GROUND FLOOR SLAB CONSTRUCTION ONGOING.

1. TCI and TC2 erected
3. Complete excavation works to basement level North & South using MH2 & MH3
4. Install temporary props and construct basement slabs
5. Commence Buildings A & B core construction

Key

- Skanska Road Traffic
- Brookfield Road Traffic (Assumed)
- Skanska Site Traffic
- Pedestrian Site Traffic
- Gate Reference
- Unloading Zone



DEC 2016 - JAN 2017
SUBSTRUCTURE WORKS ONGOING. CORE CONSTRUCTION ONGOING.

NOTES

1. Expected Vehicle Movements = 35/day

2. Week numbers based on Stage 3 programme

REVISIONS

NO	DESCRIPTION	DATE
01	ISSUED FOR CONSTRUCTION	12/01/16
02	REVISED FOLLOWING ST GILES CIRCUS	12/01/16
03	REVISED FOLLOWING ST GILES CIRCUS	12/01/16
04	REVISED FOLLOWING ST GILES CIRCUS	12/01/16
05	REVISED FOLLOWING ST GILES CIRCUS	12/01/16
06	REVISED FOLLOWING ST GILES CIRCUS	12/01/16
07	REVISED FOLLOWING ST GILES CIRCUS	12/01/16
08	REVISED FOLLOWING ST GILES CIRCUS	12/01/16
09	REVISED FOLLOWING ST GILES CIRCUS	12/01/16
10	REVISED FOLLOWING ST GILES CIRCUS	12/01/16
11	REVISED FOLLOWING ST GILES CIRCUS	12/01/16
12	REVISED FOLLOWING ST GILES CIRCUS	12/01/16
13	REVISED FOLLOWING ST GILES CIRCUS	12/01/16
14	REVISED FOLLOWING ST GILES CIRCUS	12/01/16
15	REVISED FOLLOWING ST GILES CIRCUS	12/01/16
16	REVISED FOLLOWING ST GILES CIRCUS	12/01/16
17	REVISED FOLLOWING ST GILES CIRCUS	12/01/16
18	REVISED FOLLOWING ST GILES CIRCUS	12/01/16
19	REVISED FOLLOWING ST GILES CIRCUS	12/01/16
20	REVISED FOLLOWING ST GILES CIRCUS	12/01/16
21	REVISED FOLLOWING ST GILES CIRCUS	12/01/16
22	REVISED FOLLOWING ST GILES CIRCUS	12/01/16
23	REVISED FOLLOWING ST GILES CIRCUS	12/01/16
24	REVISED FOLLOWING ST GILES CIRCUS	12/01/16
25	REVISED FOLLOWING ST GILES CIRCUS	12/01/16
26	REVISED FOLLOWING ST GILES CIRCUS	12/01/16
27	REVISED FOLLOWING ST GILES CIRCUS	12/01/16
28	REVISED FOLLOWING ST GILES CIRCUS	12/01/16
29	REVISED FOLLOWING ST GILES CIRCUS	12/01/16
30	REVISED FOLLOWING ST GILES CIRCUS	12/01/16
31	REVISED FOLLOWING ST GILES CIRCUS	12/01/16
32	REVISED FOLLOWING ST GILES CIRCUS	12/01/16
33	REVISED FOLLOWING ST GILES CIRCUS	12/01/16
34	REVISED FOLLOWING ST GILES CIRCUS	12/01/16
35	REVISED FOLLOWING ST GILES CIRCUS	12/01/16
36	REVISED FOLLOWING ST GILES CIRCUS	12/01/16
37	REVISED FOLLOWING ST GILES CIRCUS	12/01/16
38	REVISED FOLLOWING ST GILES CIRCUS	12/01/16
39	REVISED FOLLOWING ST GILES CIRCUS	12/01/16
40	REVISED FOLLOWING ST GILES CIRCUS	12/01/16
41	REVISED FOLLOWING ST GILES CIRCUS	12/01/16
42	REVISED FOLLOWING ST GILES CIRCUS	12/01/16
43	REVISED FOLLOWING ST GILES CIRCUS	12/01/16
44	REVISED FOLLOWING ST GILES CIRCUS	12/01/16
45	REVISED FOLLOWING ST GILES CIRCUS	12/01/16
46	REVISED FOLLOWING ST GILES CIRCUS	12/01/16
47	REVISED FOLLOWING ST GILES CIRCUS	12/01/16
48	REVISED FOLLOWING ST GILES CIRCUS	12/01/16
49	REVISED FOLLOWING ST GILES CIRCUS	12/01/16
50	REVISED FOLLOWING ST GILES CIRCUS	12/01/16
51	REVISED FOLLOWING ST GILES CIRCUS	12/01/16
52	REVISED FOLLOWING ST GILES CIRCUS	12/01/16
53	REVISED FOLLOWING ST GILES CIRCUS	12/01/16
54	REVISED FOLLOWING ST GILES CIRCUS	12/01/16
55	REVISED FOLLOWING ST GILES CIRCUS	12/01/16
56	REVISED FOLLOWING ST GILES CIRCUS	12/01/16
57	REVISED FOLLOWING ST GILES CIRCUS	12/01/16
58	REVISED FOLLOWING ST GILES CIRCUS	12/01/16
59	REVISED FOLLOWING ST GILES CIRCUS	12/01/16
60	REVISED FOLLOWING ST GILES CIRCUS	12/01/16
61	REVISED FOLLOWING ST GILES CIRCUS	12/01/16
62	REVISED FOLLOWING ST GILES CIRCUS	12/01/16
63	REVISED FOLLOWING ST GILES CIRCUS	12/01/16
64	REVISED FOLLOWING ST GILES CIRCUS	12/01/16
65	REVISED FOLLOWING ST GILES CIRCUS	12/01/16
66	REVISED FOLLOWING ST GILES CIRCUS	12/01/16
67	REVISED FOLLOWING ST GILES CIRCUS	12/01/16
68	REVISED FOLLOWING ST GILES CIRCUS	12/01/16
69	REVISED FOLLOWING ST GILES CIRCUS	12/01/16
70	REVISED FOLLOWING ST GILES CIRCUS	12/01/16
71	REVISED FOLLOWING ST GILES CIRCUS	12/01/16
72	REVISED FOLLOWING ST GILES CIRCUS	12/01/16
73	REVISED FOLLOWING ST GILES CIRCUS	12/01/16
74	REVISED FOLLOWING ST GILES CIRCUS	12/01/16
75	REVISED FOLLOWING ST GILES CIRCUS	12/01/16
76	REVISED FOLLOWING ST GILES CIRCUS	12/01/16
77	REVISED FOLLOWING ST GILES CIRCUS	12/01/16
78	REVISED FOLLOWING ST GILES CIRCUS	12/01/16
79	REVISED FOLLOWING ST GILES CIRCUS	12/01/16
80	REVISED FOLLOWING ST GILES CIRCUS	12/01/16
81	REVISED FOLLOWING ST GILES CIRCUS	12/01/16
82	REVISED FOLLOWING ST GILES CIRCUS	12/01/16
83	REVISED FOLLOWING ST GILES CIRCUS	12/01/16
84	REVISED FOLLOWING ST GILES CIRCUS	12/01/16
85	REVISED FOLLOWING ST GILES CIRCUS	12/01/16
86	REVISED FOLLOWING ST GILES CIRCUS	12/01/16
87	REVISED FOLLOWING ST GILES CIRCUS	12/01/16
88	REVISED FOLLOWING ST GILES CIRCUS	12/01/16
89	REVISED FOLLOWING ST GILES CIRCUS	12/01/16
90	REVISED FOLLOWING ST GILES CIRCUS	12/01/16
91	REVISED FOLLOWING ST GILES CIRCUS	12/01/16
92	REVISED FOLLOWING ST GILES CIRCUS	12/01/16
93	REVISED FOLLOWING ST GILES CIRCUS	12/01/16
94	REVISED FOLLOWING ST GILES CIRCUS	12/01/16
95	REVISED FOLLOWING ST GILES CIRCUS	12/01/16
96	REVISED FOLLOWING ST GILES CIRCUS	12/01/16
97	REVISED FOLLOWING ST GILES CIRCUS	12/01/16
98	REVISED FOLLOWING ST GILES CIRCUS	12/01/16
99	REVISED FOLLOWING ST GILES CIRCUS	12/01/16
100	REVISED FOLLOWING ST GILES CIRCUS	12/01/16

Consolidated Developments Limited

SKANSKA

ST GILES CIRCUS, LONDON WC1

ZONE 1 & 2

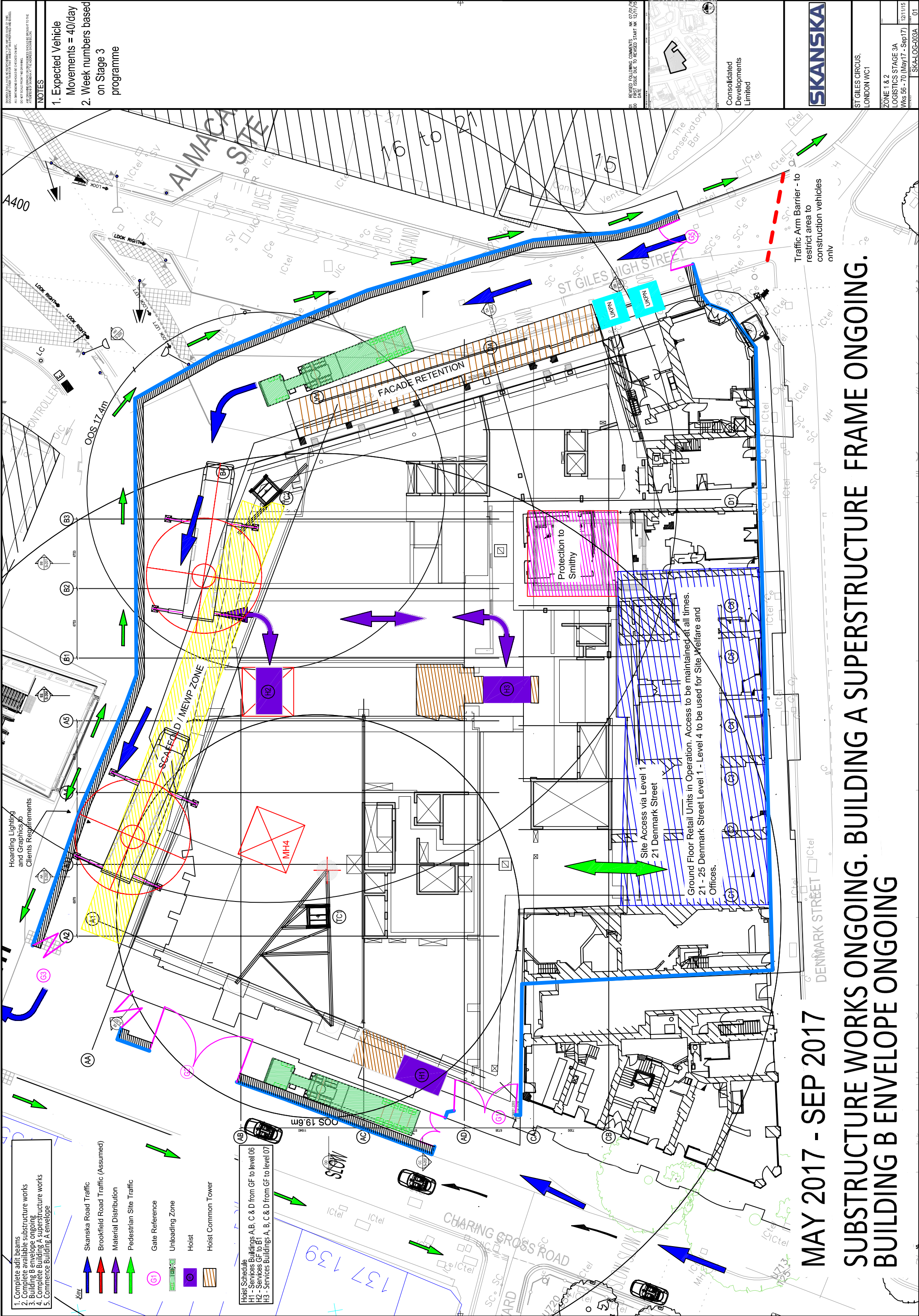
LOGISTICS STAGE 2

Wks 32 - 40 (Dec16 - Jan17)

24/06/15

SKA-LOG-002

06



NOTES

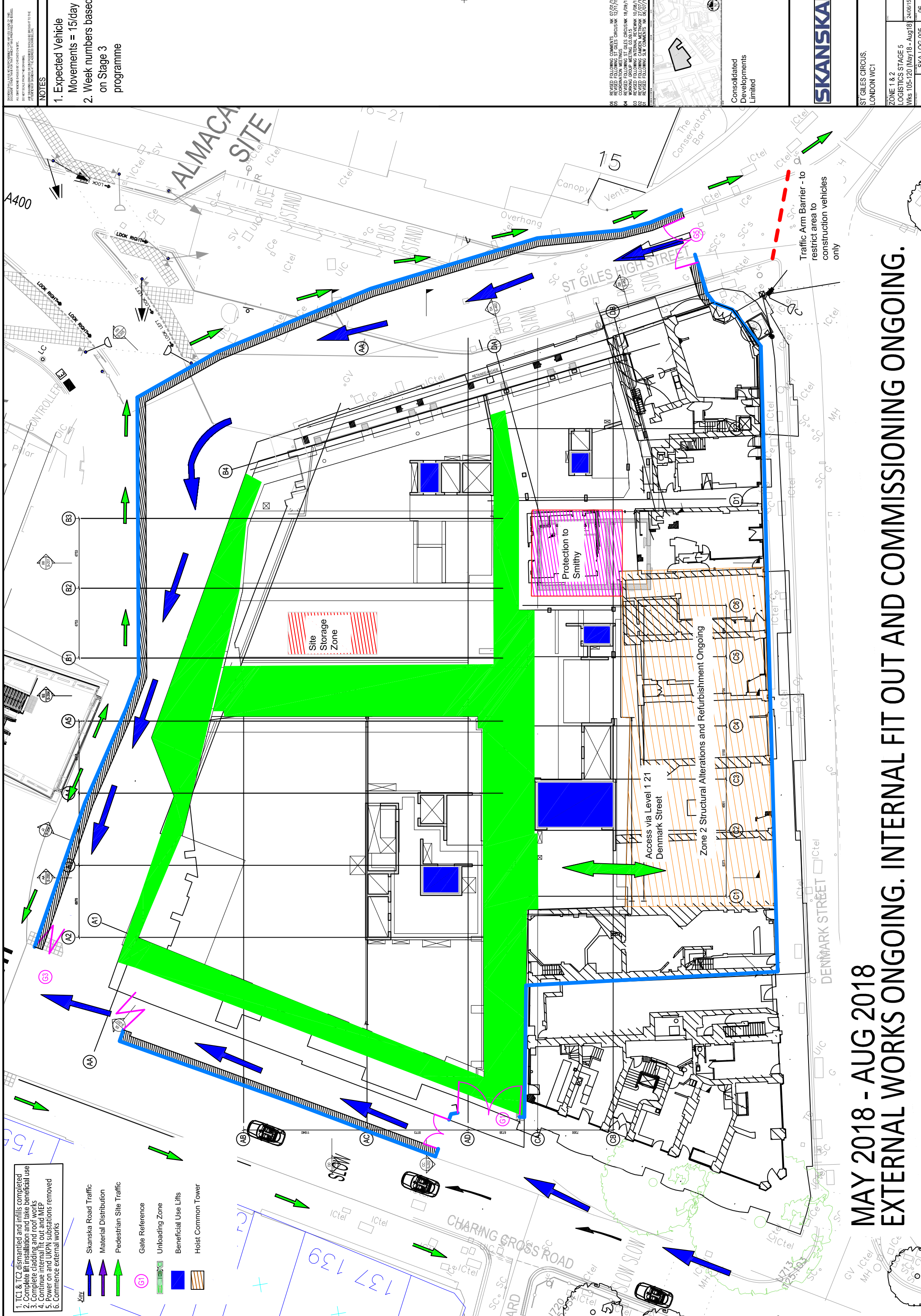
- | | | | |
|----|------------------------------------|----|----------|
| 06 | REVISED FOLLOWING COMMENTS | NK | 07/01/11 |
| 05 | REVISED FOLLOWING ST GILES CIRCUIT | NK | 12/11/11 |
| 04 | COORDINATION MEETINGS | | |
| 04 | REVISED FOLLOWING ST GILES CIRCUIT | NK | 18/09/11 |
| | WORKING GROUP MEETING 03.09.15 | | |
| 03 | REVISED FOLLOWING INTERNAL REVIEW | NK | 10/08/11 |
| 02 | REVISED FOLLOWING CAMDEN MEETING | NK | 27/07/11 |
| 01 | REVISED FOLLOWING SLW COMMENTS | NK | 06/07/11 |

SKANSKA

ZONE 1 & 2
LOGISTICS STAGE 4

000,000,000,000	SKA-LOG-004	0004	05
-----------------	-------------	------	----





NOTES

1. Expected Vehicle Movements = 15/day
2. Week numbers based on Stage 3 programme

1. TCI & TC2 dismantled and infills completed
2. Complete lift installation and take beneficial use
3. Continue internal fit out and MEP
4. Power on and UKPN substations removed
5. Commence external works

Skanska Road Traffic
Material Distribution
Pedestrian Site Traffic
Gate Reference
Unloading Zone
Beneficial Use Lifts
Hoist Common Tower

ST GILES HIGH STREET
DENMARK STREET
CHARING CROSS ROAD

Zone 2 Structural Alterations and Refurbishment Ongoing
Access via Level 1 21 Denmark Street

Site Storage Zone
Protection to Smithy

Consolidated Developments Limited

SKANSKA

ST GILES CIRCUS, LONDON WC1

ZONE 1 & 2 LOGISTICS STAGE 5 Wks 105-120 (May18 - Aug18)

24/06/15
SKA-LOG-005
06

MAY 2018 - AUG 2018
EXTERNAL WORKS ONGOING. INTERNAL FIT OUT AND COMMISSIONING ONGOING.