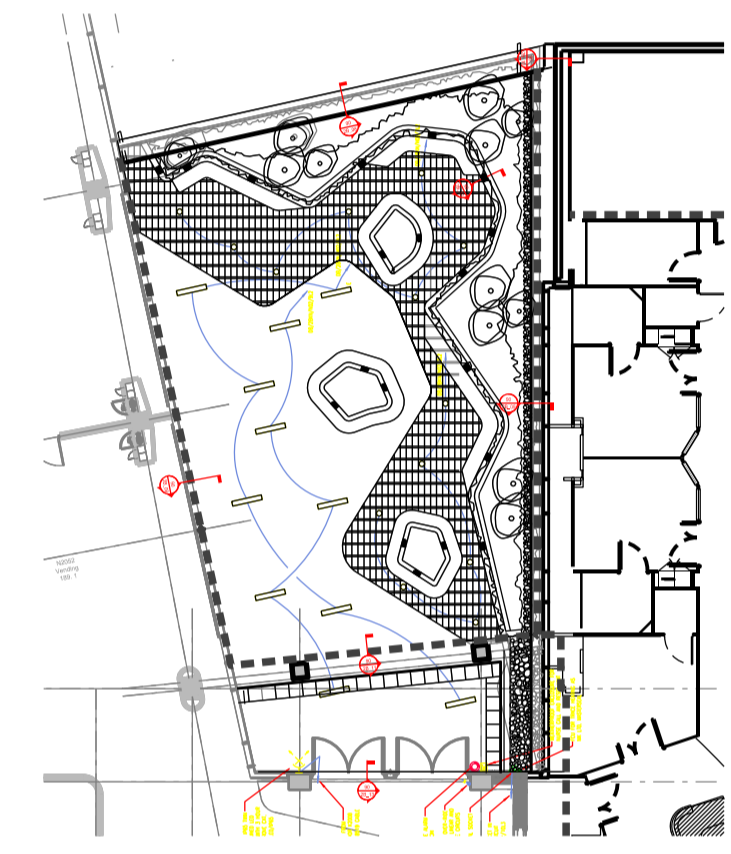
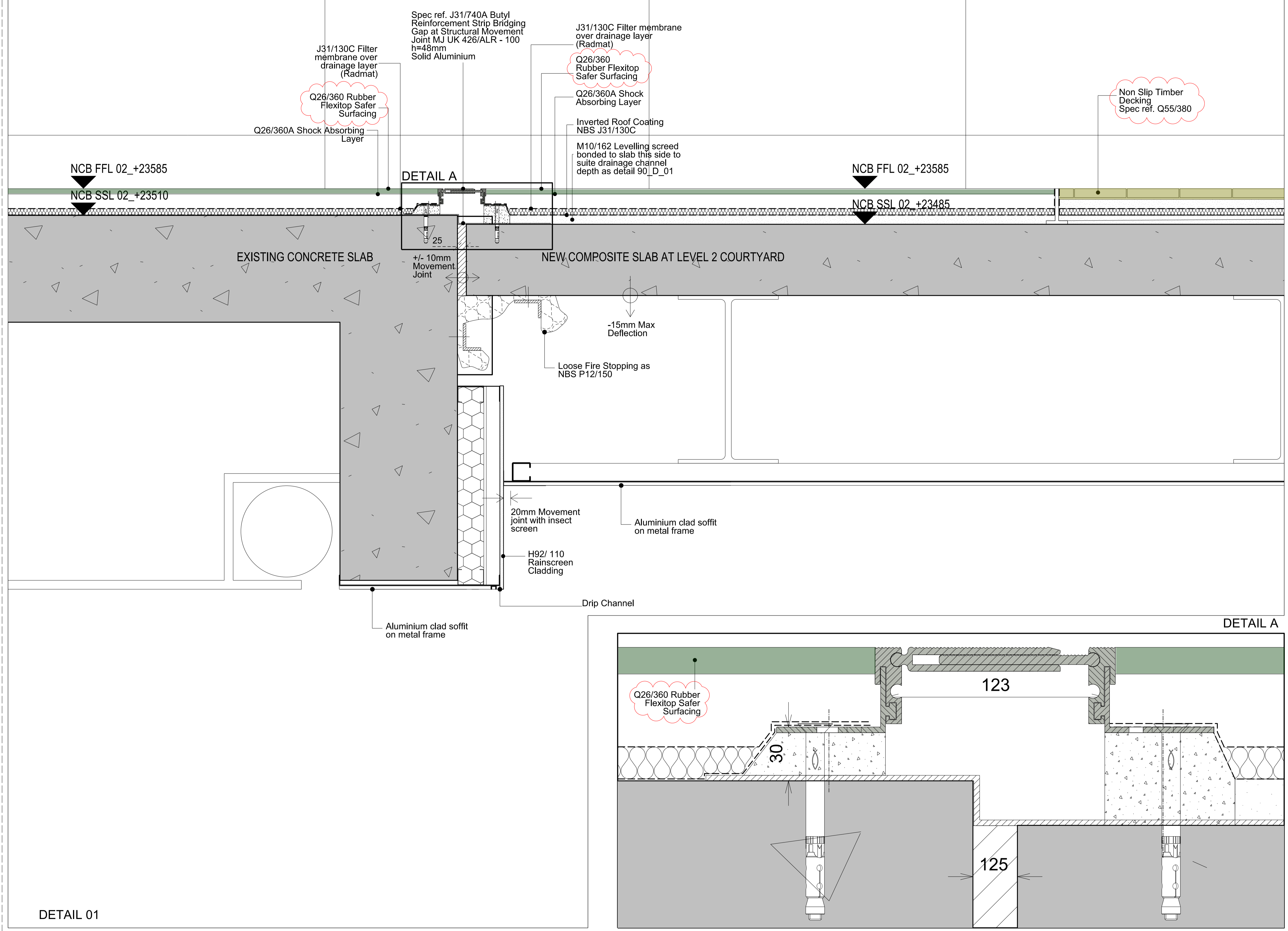


Section Facing West towards Phase 2A

North

- All dimensions to be checked on site
 - Do not scale off this drawing
 - All dimensions are shown in mm unless otherwise stated
 - Refer to drawing issue sheet for purpose of issue
 - If in doubt ask
 - © Llewelyn Davies Weeks Ltd.

Notes



C3	Issued under DCR A-131 for approval Discharge of Condition 5	27.11.15	NR
C2	Issued for construction	27.10.14	AC
C2	Title amended	09.09.14	AMA
C1	Construction Issue	18.08.14	AMA
No.	Description	Date	By
Revisions			

Structural Consultant: WSP
 Project Manager: WSP
 Cost Consultant: WSP
 Services Consultant: WSP
 Project Title: Great Ormond Street Hospital Phase 2 B

Client: Great Ormond Street Hospital for Children NHS Trust

Drawing Title: LEVEL 2 COURTYARD CANOPY ABUTMENT DETAILS

Drawing Number: 90_2B_11
 Revision: C3

Scale @ A1: 1:5
 Date: 28.07.2014

Architects: LLEWELYN DAVIES
 Architects | Planners | Designers
 www.ldaves.com

DETAIL 01