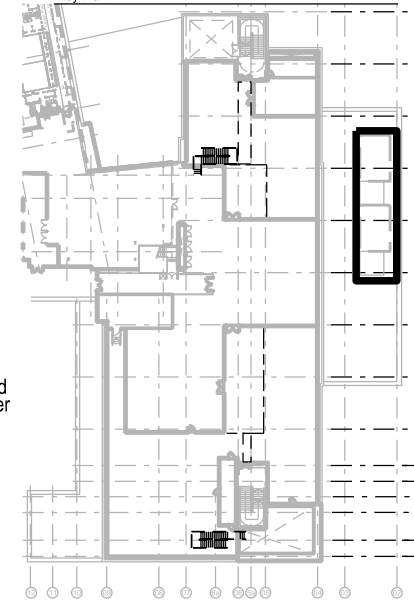


Notes

All dimensions to be checked on site. Do not scale from this drawing  
Report any discrepancies and omissions to LD  
All dimensions are shown in mm unless otherwise stated  
Refer to drawing issue sheet for purpose of issue  
If in doubt ask  
This drawing is Copyright ©  
This detail has been developed from Radmat drawing RAD-PQ-108  
in accordance with Radmat's insurance backed guarantee.

Key Plan



47\_2B\_D\_L4\_14



'Pergola' screen above roof mounted  
Plant using stainless steel mesh over  
steel framing

Plant layout to circular pots  
Bamboo & Bulrush  
Spec ref. Q31/401B

GRP Electrical housing

Translucent patterned  
privacy screen

Paving slabs

Plant layout to wave form  
Buxus sempervirens Myrtus  
Spec ref. Q31/401A

Prefabricated Plant containers  
Spec ref. Q31/292A

Extensive green roof

C2 Issued under DCR A-131 for approval 27.11.15 LD  
Discharge of Condition 5

C1 First issue 26.03.15 LD  
No. Description Date By  
Revisions

Structural Consultant Services Consultant



Project Manager Cost Consultant



Project Title

### Great Ormond Street Hospital Phase 2 B

Client



Drawing Title  
Pergola visual - Theatre Plant Eye level from SE

Drawing number Revision  
47\_2B\_D\_L4\_14 C2

Scale @ A3 Drawn  
LD

Date  
26.03.15



Eye level view of Theatre plant Pergola from SE  
Refer to 90\_2B\_15 for External planting