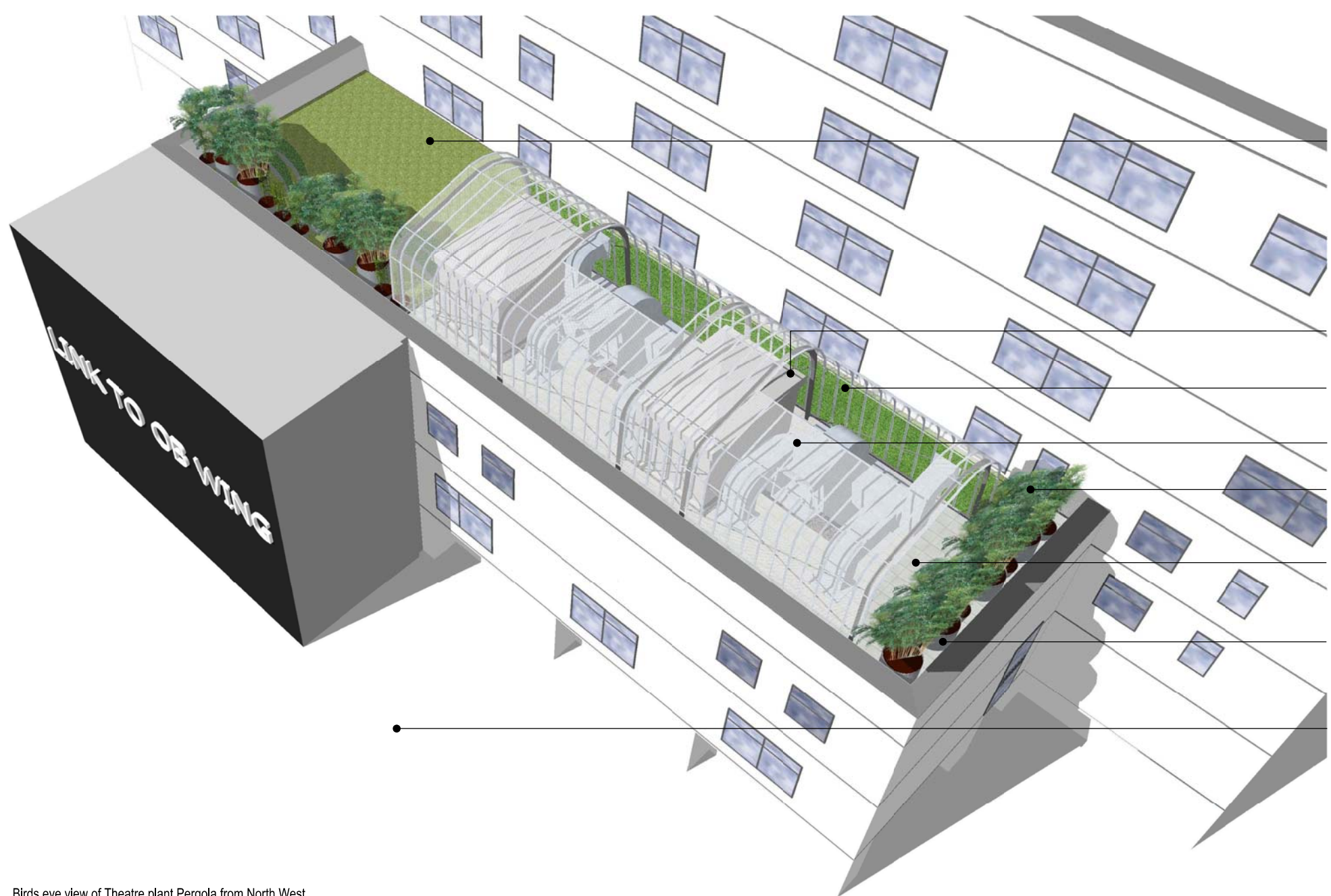


Notes
 All dimensions to be checked on site. Do not scale from this drawing
 Report any discrepancies and omissions to LD
 All dimensions are shown in mm unless otherwise stated
 Refer to drawing issue sheet for purpose of issue
 If in doubt ask
 This drawing is Copyright ©
 This detail has been developed from Radmat drawing RAD-PQ-108
 in accordance with Radmat's insurance backed guarantee.



47_2B_D_L4_13



- Extensive green roof
- GRP Electrical housing
- Translucent patterned privacy screen
- 'Pergola' screen above roof mounted Plant using stainless steel mesh over steel framing
- Plant layout to circular pots Bamboo & Bulrush Spec ref. Q31/401B
- Paving slabs
- Prefabricated Plant containers Spec ref. Q31/292A
- OBW Link building shown indicatively only

Birds eye view of Theatre plant Pergola from North West
 Refer to 90_2B_15 for External planting

C2	Issued under DCR A-131 for approval 27.11.15	LD
	Discharge of Condition 5	
C1	First issue	26.03.15 LD
No.	Description	Date By
Revisions		

Structural Consultant	Services Consultant
Project Manager	Cost Consultant
Project Title	

**Great Ormond Street Hospital
 Phase 2 B**

Client
**Great Ormond Street NHS
 Hospital for Children**
 NHS Trust

Drawing Title
 Pergola visual - Birds eye view from NW

Drawing number	Revision
47_2B_D_L4_13	C2

Scale @ A3 Drawn
 LD

Date
 26.03.15