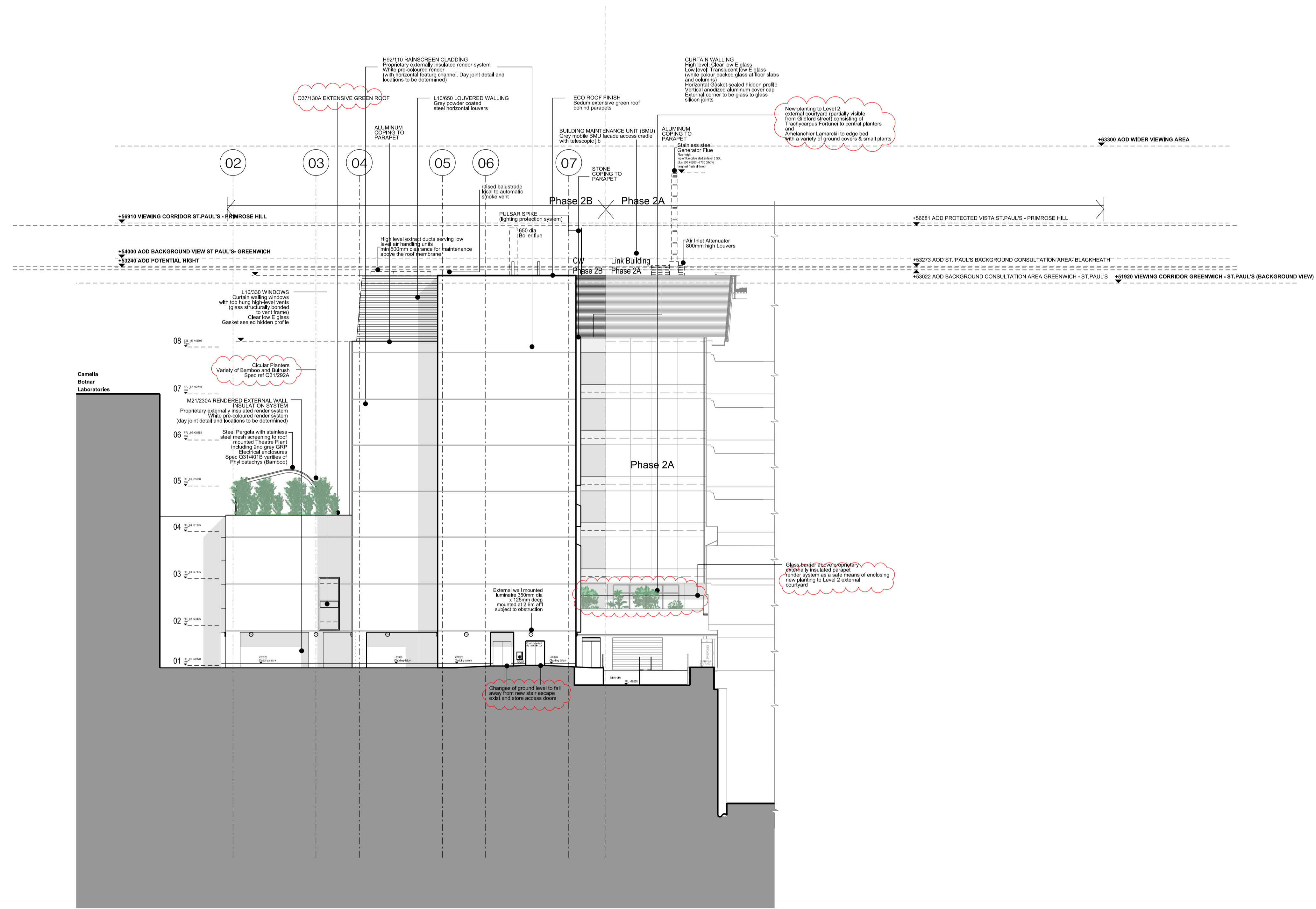


- All dimensions to be checked on site
 - Do not scale off this drawing
 - All dimensions are shown in mm unless otherwise stated
 - Refer to drawing issue sheet for purpose of issue
 - If in doubt ask
 - © Lewelyn Davies Weeks Ltd.

Notes
 Read in conjunction with original approved drawing number: E_2AB_N3
 Original planning application : 2007/4116/P

refer to plans and sections for details of balustrades and BMU tracking arrangements



C10	Issued under DCR A-153 for approval Additional comments to Discharge of Condition 5	18.01.16	NR
C9	Issued under DCR A-131 for approval Discharge of Condition 5	26.11.15	NR
C8	Issued under DCR A-125 for approval	05.11.15	NR
C7	Issued under DCR A-119 for approval	26.10.15	NR
C6	Issued under DCR A-076 for approval. Issued for concurrent planning approval of details of plant etc (discharge of Condition 8) and Non Material Amendments (minor changes to elevations)	06.07.15	NR
C5	Issued under DCR A-071 for approval	16.06.15	NR
C4	Issued under DCR A-069 for approval	15.06.15	NR
C3	Changes from original planning application highlighted with clouds for RACP 0019 approval	13.05.15	NR
The following changes are listed below -horizontal feature channels added to echo Phase 2A -notes added			
C2	Louvers amended for Pre-Application review	20.11.14	JD
C1	Added Generator Flue in accordance to RFI F/45 (Subject to planning permission approval) Construction Issue	26.05.14	MN
T4	Updated for Disney imaginaires	10.04.14	ZL
T3	Glass Specification Updated	23.01.14	AMA
T2	Glass NBS Refs Added	05.09.13	AMA
T1	Updated for Tender Issue	17.01.13	AA
02	Drg no updated	16.08.12	MG
01	drawing updated to GOSH comments	07.09.11	AA

No. Description Date By
 Revisions

Structural Consultant Services Consultant
 Project Manager Cost Consultant

Project Title
**Great Ormond Street Hospital
 Phase 2 B**

Client
 Great Ormond Street Hospital for Children
 NHS Trust

Drawing Title
**NORTH ELEVATION
 2015 update**

Drawing Number Revision
00_2B_E_N C10

Scale @ A1
 A1_1:200 - A3_1:400
 Date

Architects

