

FIG 37. Historic Ordnance Survey, 1910. (Edina Digimap 2016)
Scale 1:1250@A3

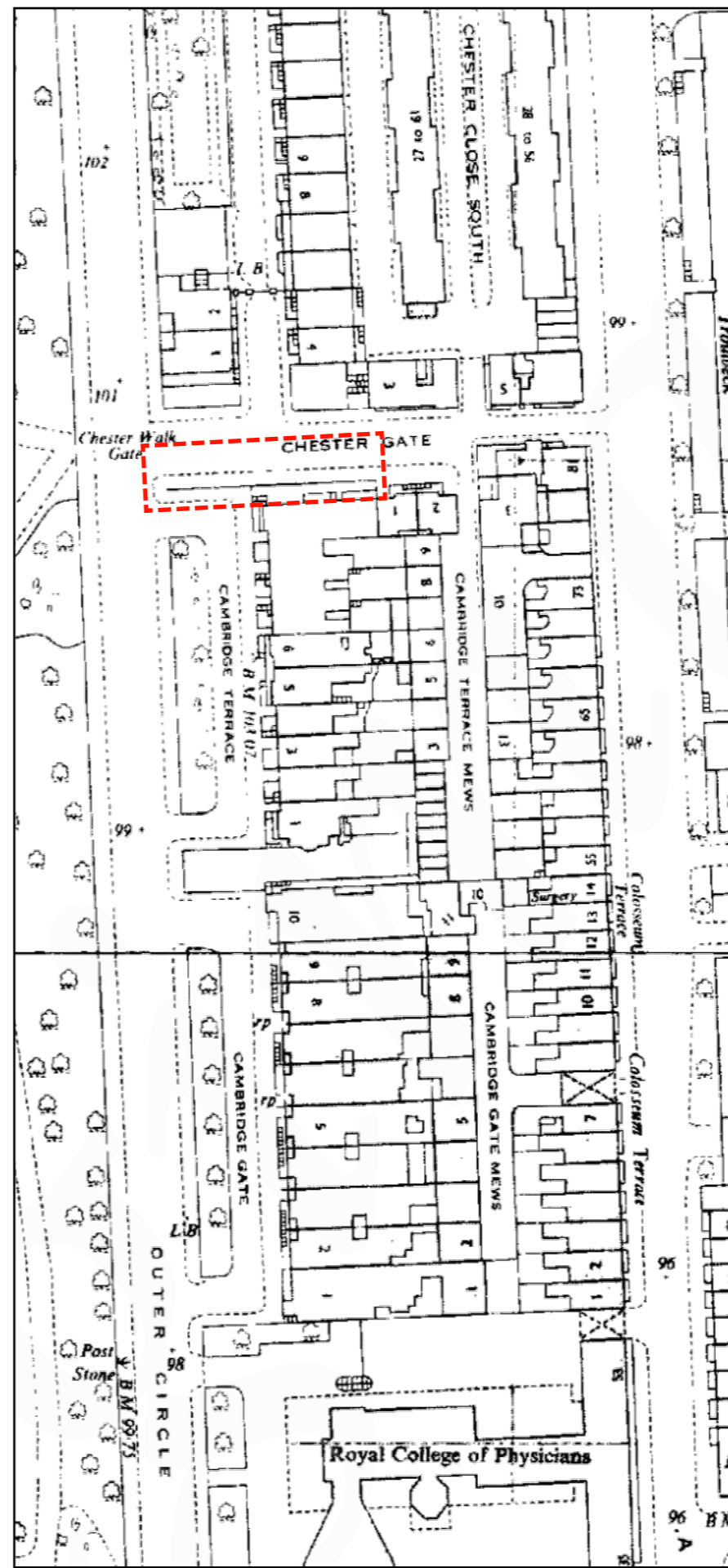


FIG 38. Historic Ordnance Survey, 1980. (Edina Digimap 2016)
Scale 1:1250@A3

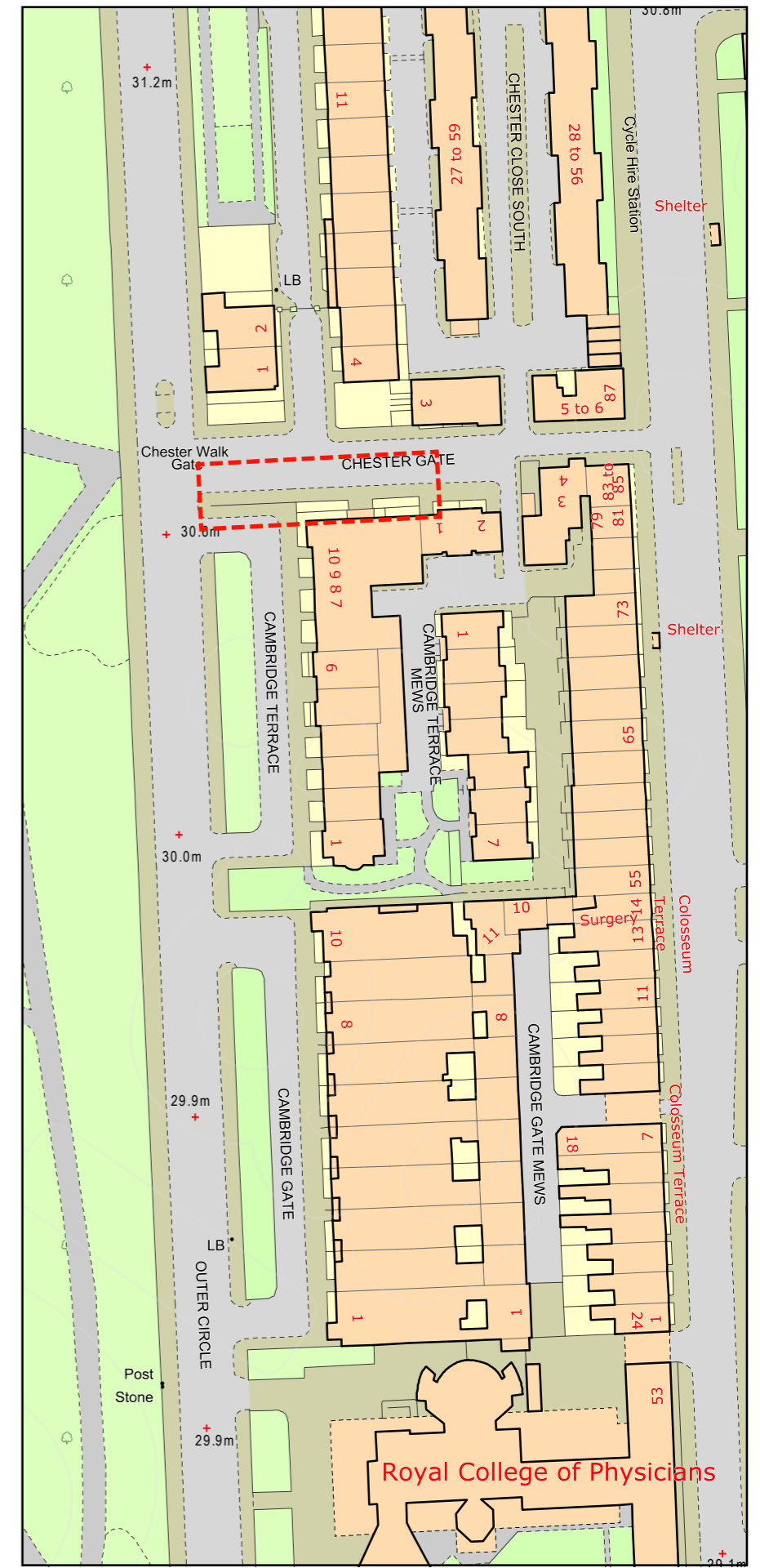


FIG 39. Historic Ordnance Survey, 2016. (Edina Digimap 2016)
Scale 1:1250@A3

5.0 DESIGN STATEMENT

5.1 The overarching design principle is to re-establish the relationship between architecture and landscape in line with Nash's vision of the metropolitan picturesque.

Guiding Principles

- To reinstate the garden at Nos. 6-10 Cambridge Terrace as originally intended by John Nash and that can be identified on the 1834-35 detailed survey by Charles Mayhew. Fig 41.
- To introduce 'framed' views towards Cambridge Terrace from the Outer Circle and Regent's Park through the strategic planting of trees at the North end.
- To create two distinct gardens spaces that interpret the historic path layout as documented in Charles Mayhew's 1834-35 plan whilst taking the opportunity to modify the design layout to accommodate the requirements of the client.
- To unite gardens and architecture through the use of high quality materials in keeping with the Crown Estate Paving Commission's requirements.
- To enhance biodiversity and improve habitats for wildlife across the site and adjacent park.
- To create a sensitive and appropriate setting for the listed buildings.

Layout

5.2 When viewed from the street and the park, this garden will appear as a mixed shrubbery above a clipped yew hedge with ornamental trees overhead using the same planting design principles as the approved scheme for the adjacent Cambridge Terrace garden.

5.3 The entrance to the garden will be via a gate in the proposed railings at the eastern end leading to a formal oval entrance space in front of the entrance to Nos. 6-10 Cambridge Terrace. This layout has been designed to reflect the original layout as seen in the 1834-35 Charles Mayhew plan (Fig. 34).

5.4 Moving westwards the garden will become less formal as the path narrows and the planting becomes more varied, irregular and less clipped in appearance. The path will lead through an arbour-effect of arching specimen trees on axis with the entrance gate before opening out onto an oval shaped lawn surrounded by trees and mixed shrubberies.



FIG 40. Chester Gate & Cambridge Terrace Masterplan

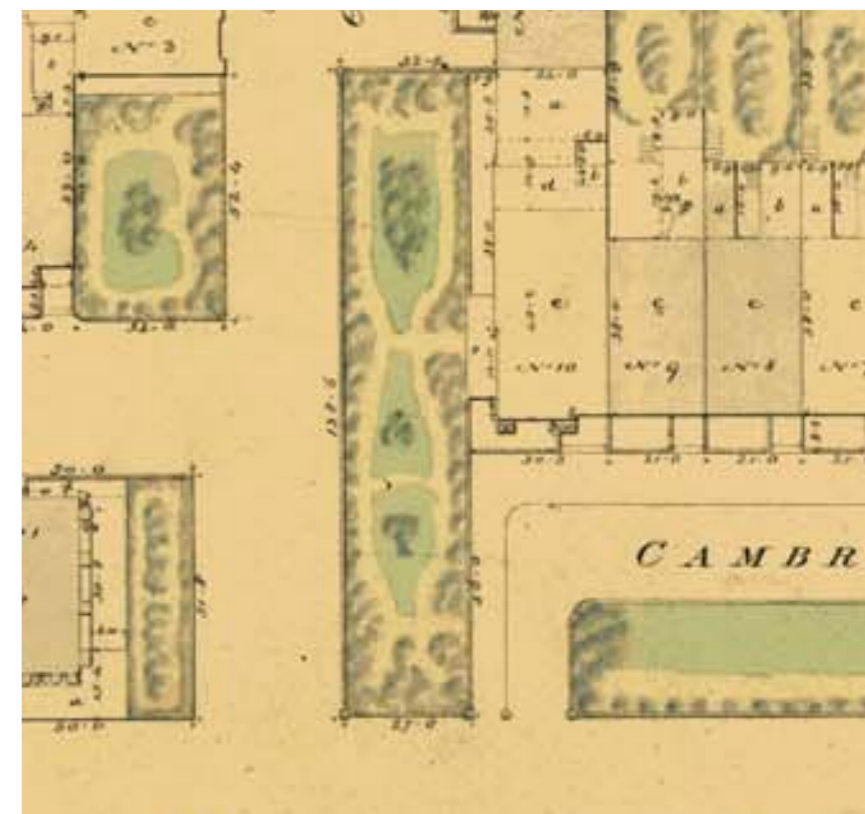


FIG 41. Detail of Charles Mayhew, Plans of all the Ground, Houses and other Buildings within the Jurisdiction of the Commissioners for Paving the Regent's Park, Regent's Street, Whitehall, &c. from an actual survey made in the years 1834 and 1835

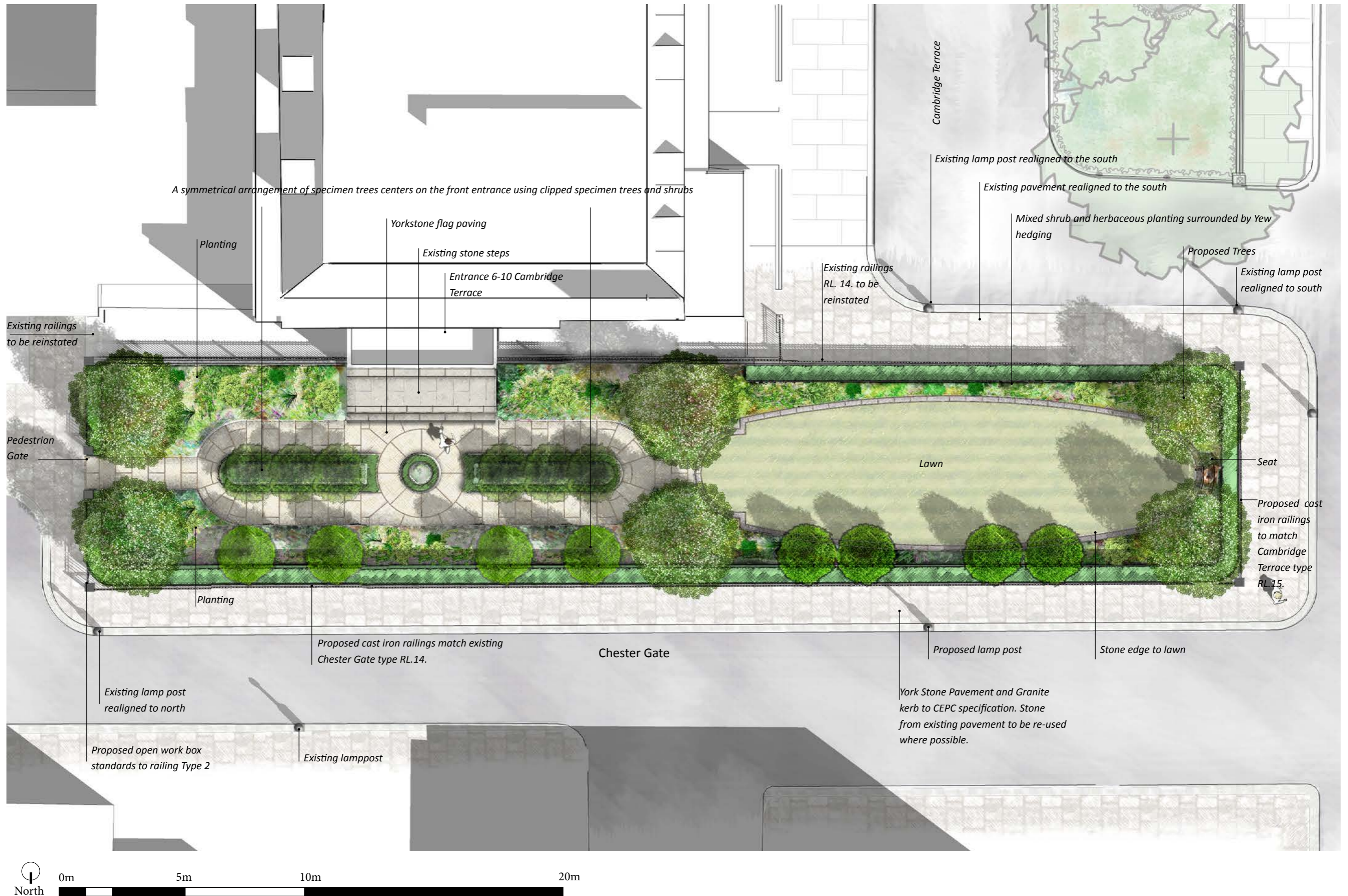


FIG 42. Chester Gate Masterplan





FIG 47. Chester Gate Perspective