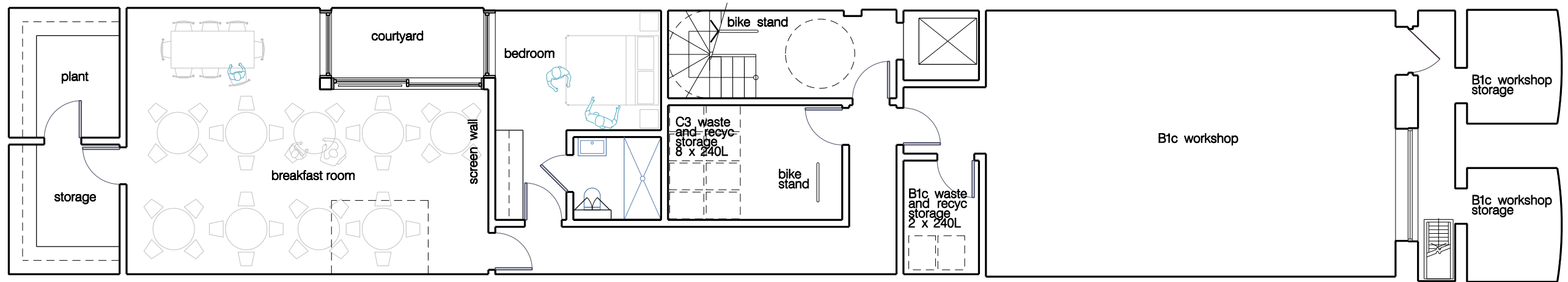


ground floor



lower ground floor

Rev	Notes	Date
-	issued for planning	27.03.15
A	revised storage areas	06.04.15
B	issued for planning amendment	16.03.16

accommodation schedule:

lower ground - 1 bedroom

ground floor - 2 x wheelchair accessible bedrooms + 1 bedroom

1st floor - 3 x bedroom (front) + 2 x bedroom (rear)

2nd floor - 4 x bedroom (front)

3rd floor - 4 x bedroom

4th floor - 4 x bedroom

5th floor - 4 x bedroom

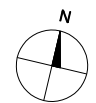
6th floor - 3 x bedroom

7th floor - 3 x bedroom

total - 31 bedrooms

- all dimensions are to be checked on site and any discrepancies reported to the architect
- architect to be informed of any additional information required
- do not scale this drawing

PLANNING



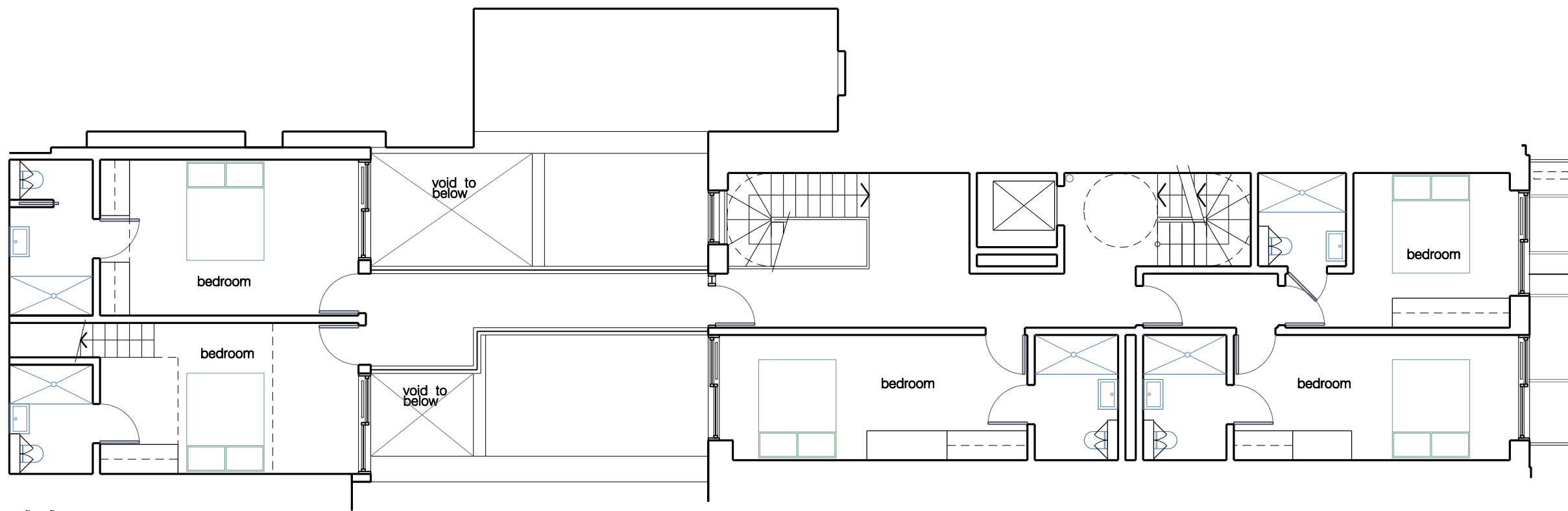
WORKS
ARCHITECTURE

16 UPPER MONTAGU STREET
LONDON W1H 2AN
020 7224 8750
WWW.WORKSARCHITECTURE.COM

Project: 84 hatton garden

Title: proposed floor plans

Date: 16.03.16	Drawn: js	Scale: 1:100@a3 1:50@a1	Drawing Number: pl 101	Revision: B
----------------	-----------	----------------------------	------------------------	-------------



Rev	Notes	Date
-	issued for planning	27.03.15
A	issued for planning amendment	16.03.16

accommodation schedule:

lower ground – 1 bedroom
 ground floor – 2 x wheelchair accessible bedrooms + 1 bedroom
 1st floor – 3 x bedroom (front) + 2 x bedroom (rear)
 2nd floor – 4 x bedroom (front)
 3rd floor – 4 x bedroom
 4th floor – 4 x bedroom
 5th floor – 4 x bedroom
 6th floor – 3 x bedroom
 7th floor – 3 x bedroom
 total – 31 bedrooms

- all dimensions are to be checked on site and any discrepancies reported to the architect
 - architect to be informed of any additional information required
 - do not scale this drawing

PLANNING

N

WORKS
ARCHITECTURE

16 UPPER MONTAGU STREET
LONDON W1H 2AW
020 7224 8750
WWW.WORKSARCHITECTURE.COM

Project: 84 hatton garden

Title: proposed floor plans

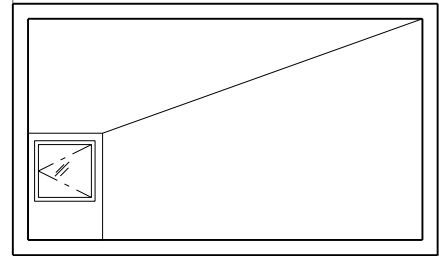
Date: 16.03.16 Drawn: js Scale: 1:100@a3
1:50@a1 Drawing Number: pl 102 Revision: A



fourth floor



third floor



Rev	Notes	Date
-	issued for planning	27.03.15
A	issued for planning amendment	16.03.16

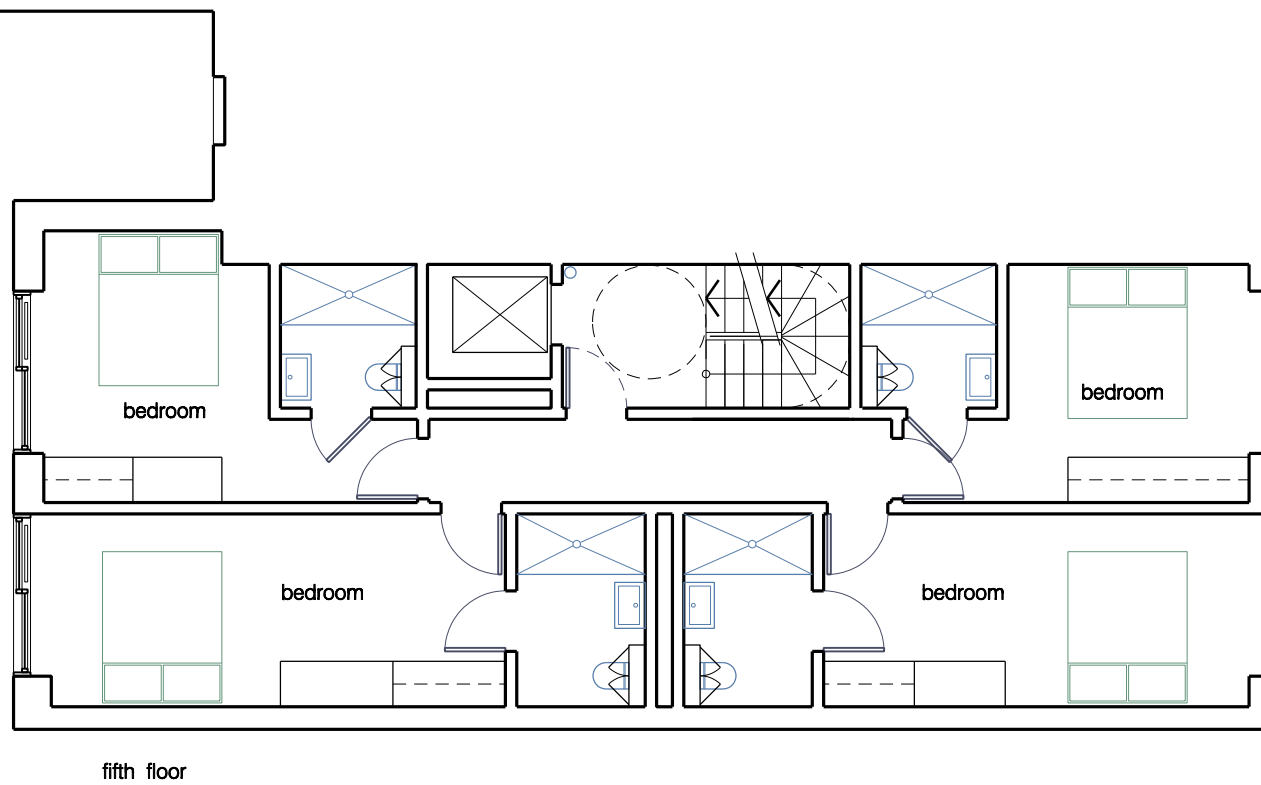
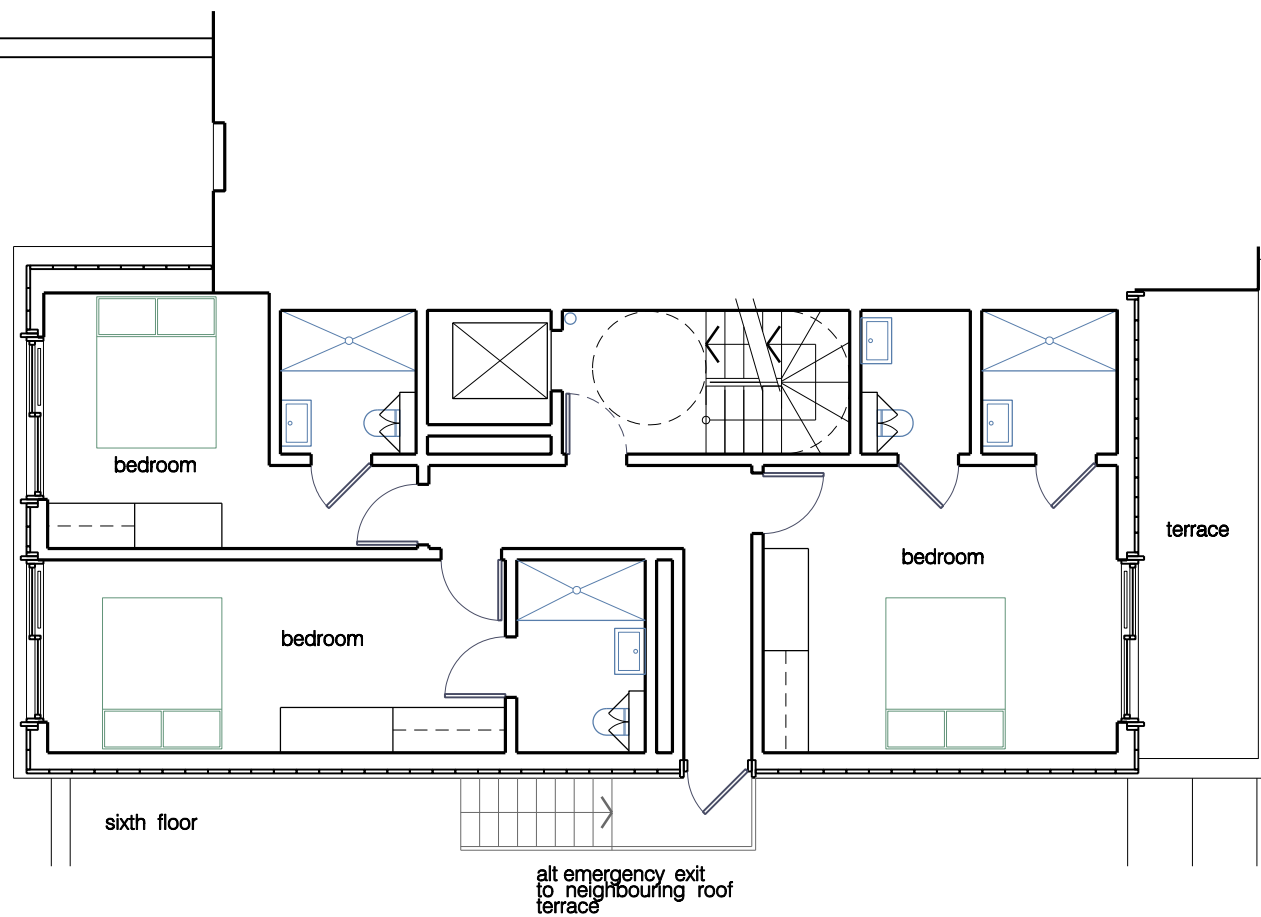
accommodation schedule:
 lower ground - 1 bedroom
 ground floor - 2 x wheelchair accessible bedrooms + 1 bedroom
 1st floor - 3 x bedroom (front) + 2 x bedroom (rear)
 2nd floor - 4 x bedroom (front)
 3rd floor - 4 x bedroom
 4th floor - 4 x bedroom
 5th floor - 4 x bedroom
 6th floor - 3 x bedroom
 7th floor - 3 x bedroom
 total - 31 bedrooms

- all dimensions are to be checked on site and any discrepancies reported to the architect
 - architect to be informed of any additional information required
 - do not scale this drawing

PLANNING



WORKS ARCHITECTURE 16 UPPER MONTAGU STREET LONDON W1H 2AN 020 7224 8750 WWW.WORKSARCHITECTURE.COM		Project: 84 hatton garden		
		Title: proposed floor plans		
Date: 16.03.16	Drawn: js	Scale: 1:100@a3 1:50@a1	Drawing Number: pl 103	Revision: A



Rev	Notes	Date
-	issued for planning	27.03.15
A	issued for planning amendment	16.03.16

accommodation schedule:
 lower ground - 1 bedroom
 ground floor - 2 x wheelchair accessible bedrooms + 1 bedroom
 1st floor - 3 x bedroom (front) + 2 x bedroom (rear)
 2nd floor - 4 x bedroom (front)
 3rd floor - 4 x bedroom
 4th floor - 4 x bedroom
 5th floor - 4 x bedroom
 6th floor - 3 x bedroom
 7th floor - 3 x bedroom
 total - 31 bedrooms

- all dimensions are to be checked on site and any discrepancies reported to the architect
 - architect to be informed of any additional information required
 - do not scale this drawing

PLANNING

N

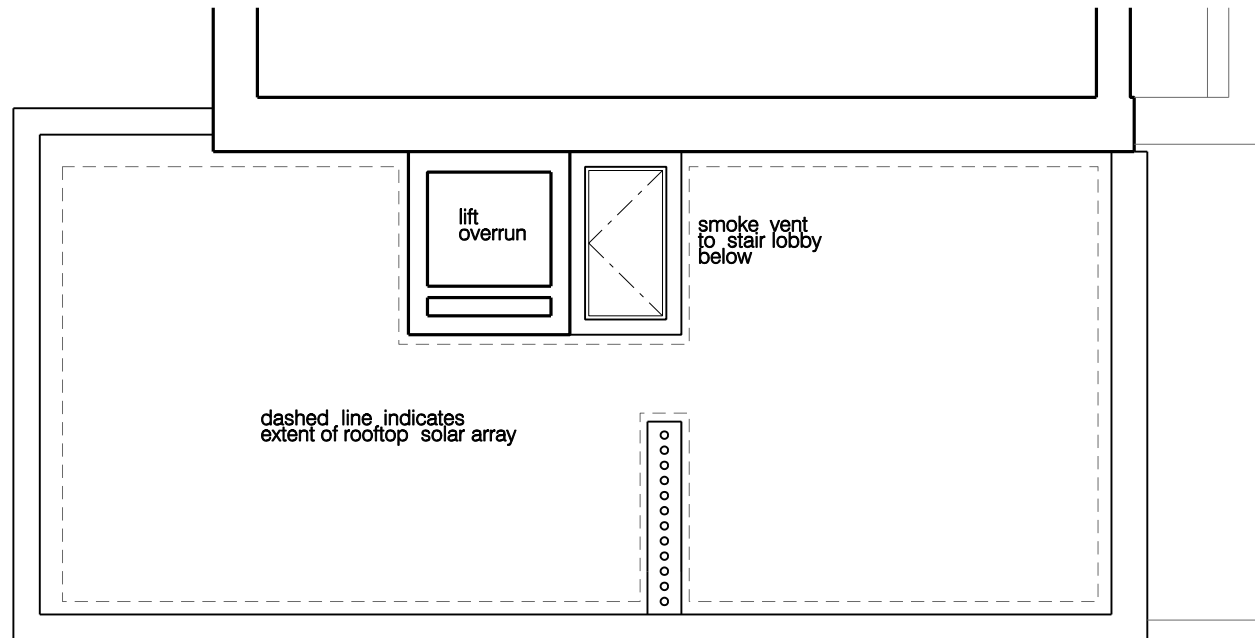
WORKS
ARCHITECTURE

16 UPPER MONTAGU STREET
LONDON W1H 2AM
020 7224 8750
WWW.WORKSARCHITECTURE.COM

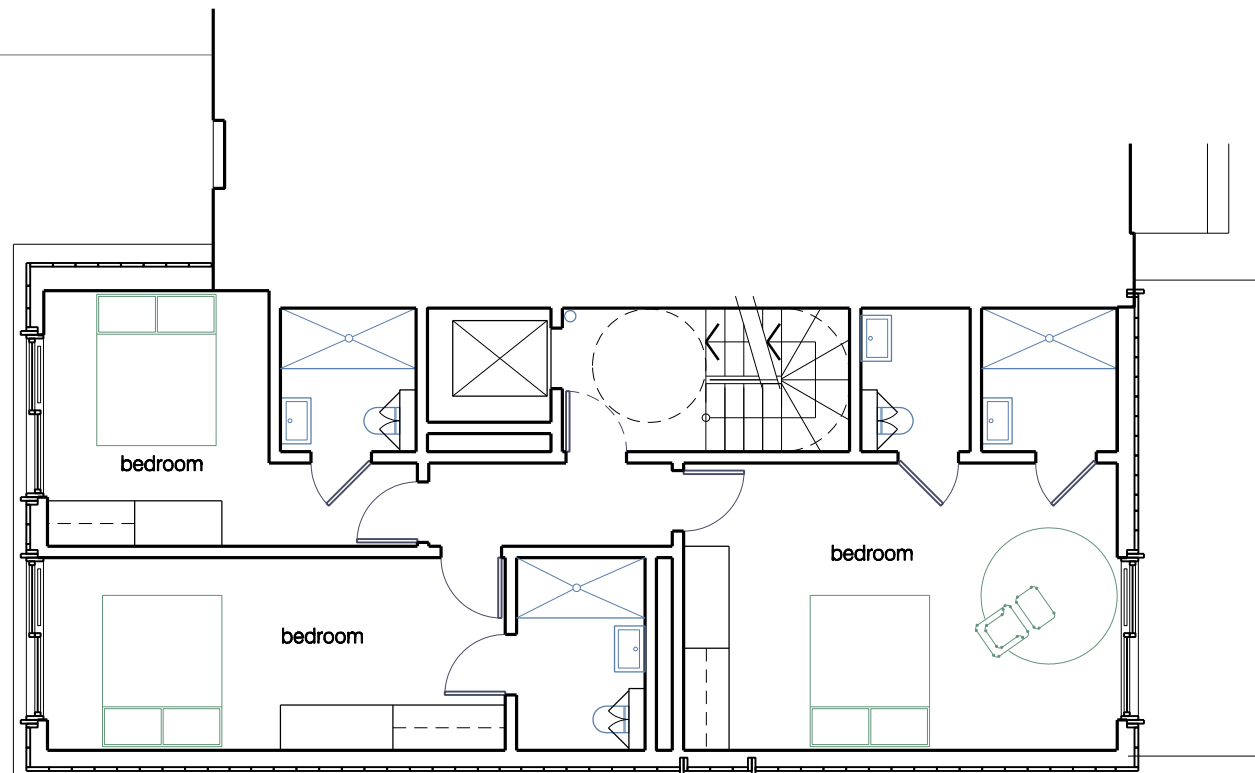
Project: 84 hatton garden

Title: proposed floor plans

Date: 16.03.16 Drawn: js Scale: 1:100@a3
1:50@a1 Drawing Number: pl 104 Revision: A



roof plan



seventh floor

Rev	Notes	Date
-	issued for planning	27.03.15
A	issued for planning amendment	16.03.16

accommodation schedule:

lower ground - 1 bedroom

ground floor - 2 x wheelchair accessible bedrooms + 1 bedroom

1st floor - 3 x bedroom (front) + 2 x bedroom (rear)

2nd floor - 4 x bedroom (front)

3rd floor - 4 x bedroom

4th floor - 4 x bedroom

5th floor - 4 x bedroom

6th floor - 3 x bedroom

7th floor - 3 x bedroom

total - 31 bedrooms

- all dimensions are to be checked on site and any discrepancies reported to the architect
- architect to be informed of any additional information required
- do not scale this drawing

PLANNING



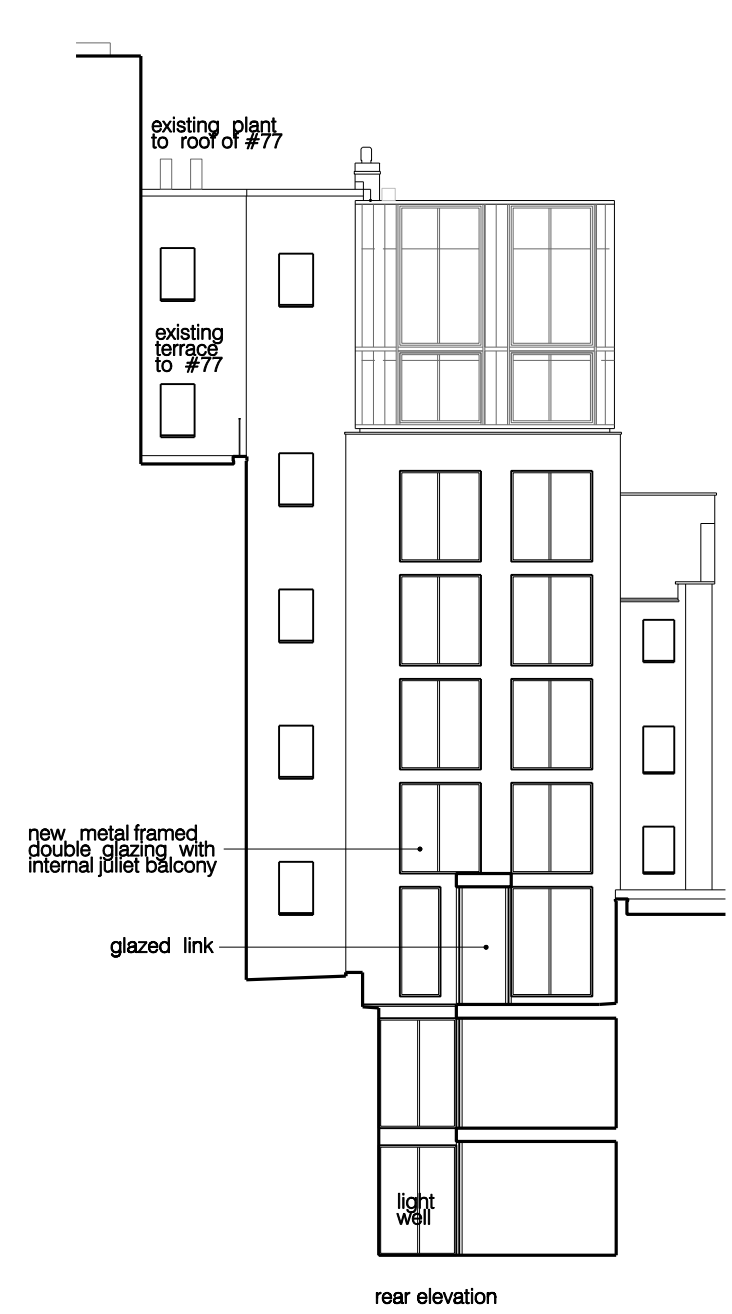
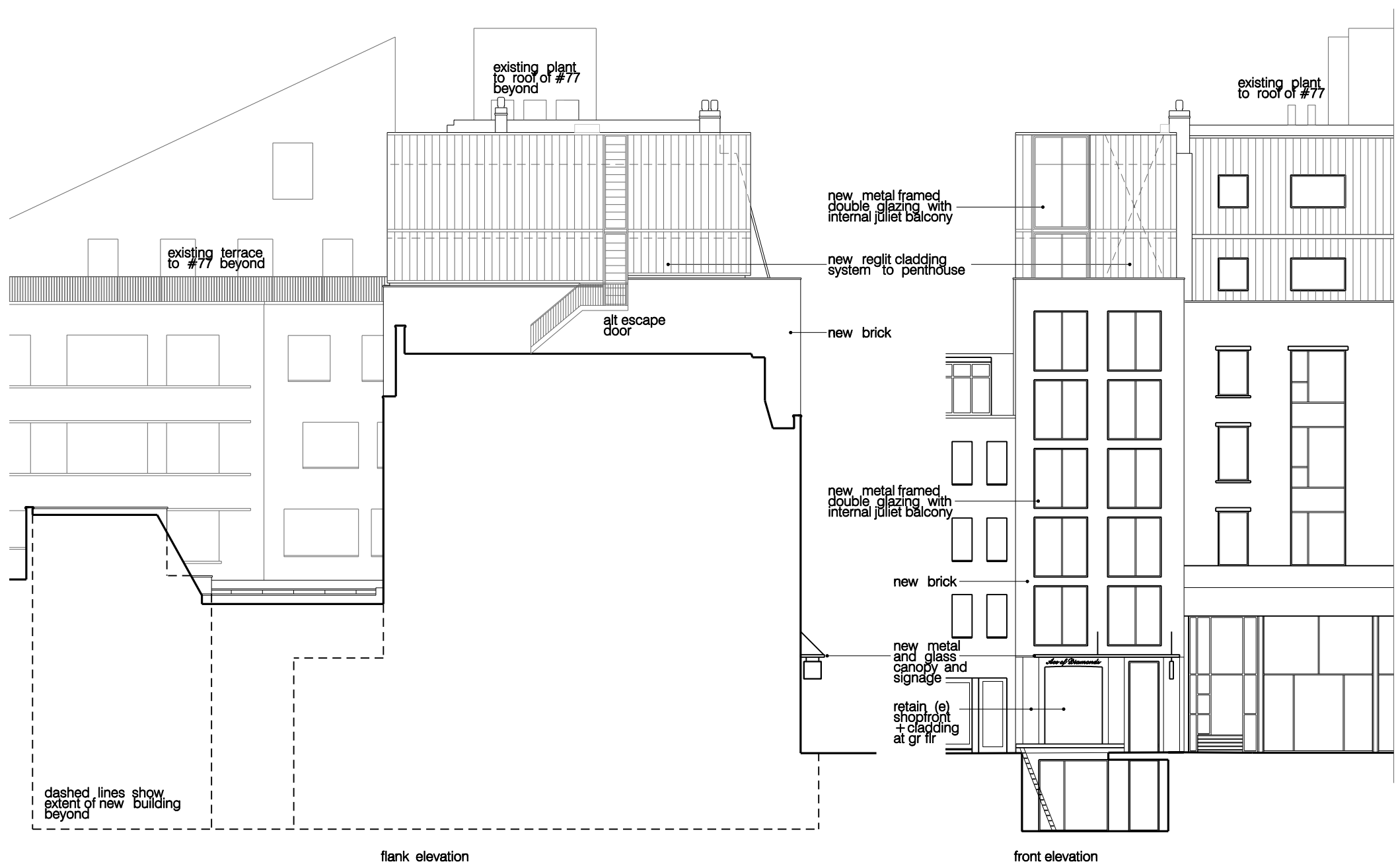
WORKS
ARCHITECTURE

16 UPPER MONTAGU STREET
LONDON W1H 2AN
020 7224 8750
WWW.WORKSARCHITECTURE.COM

Project: 84 hatton garden

Title: proposed floor plans

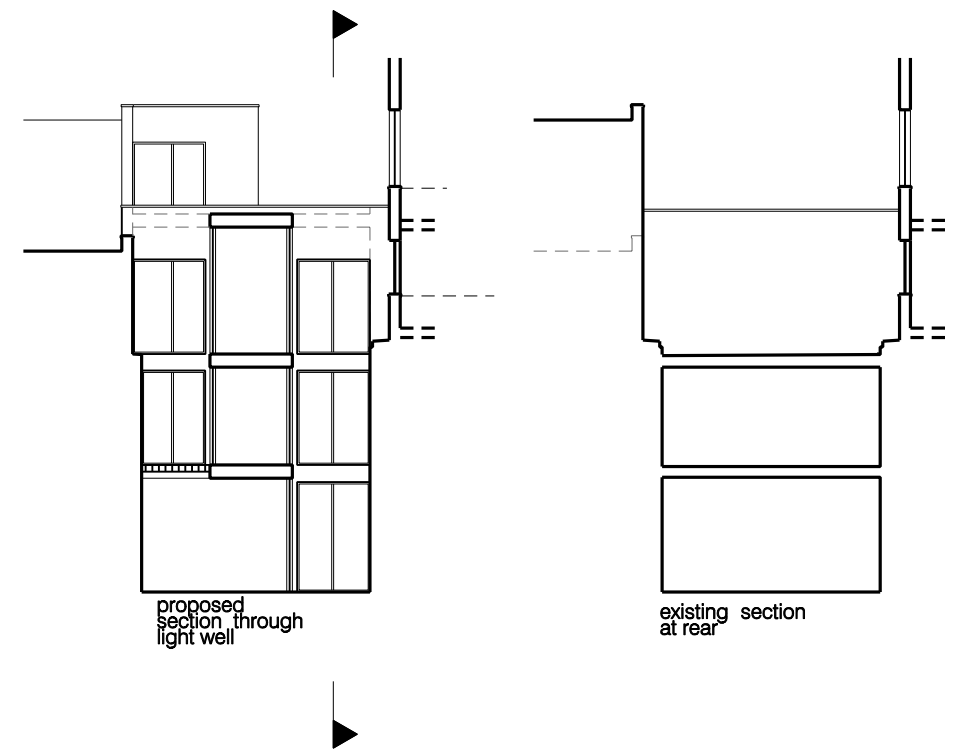
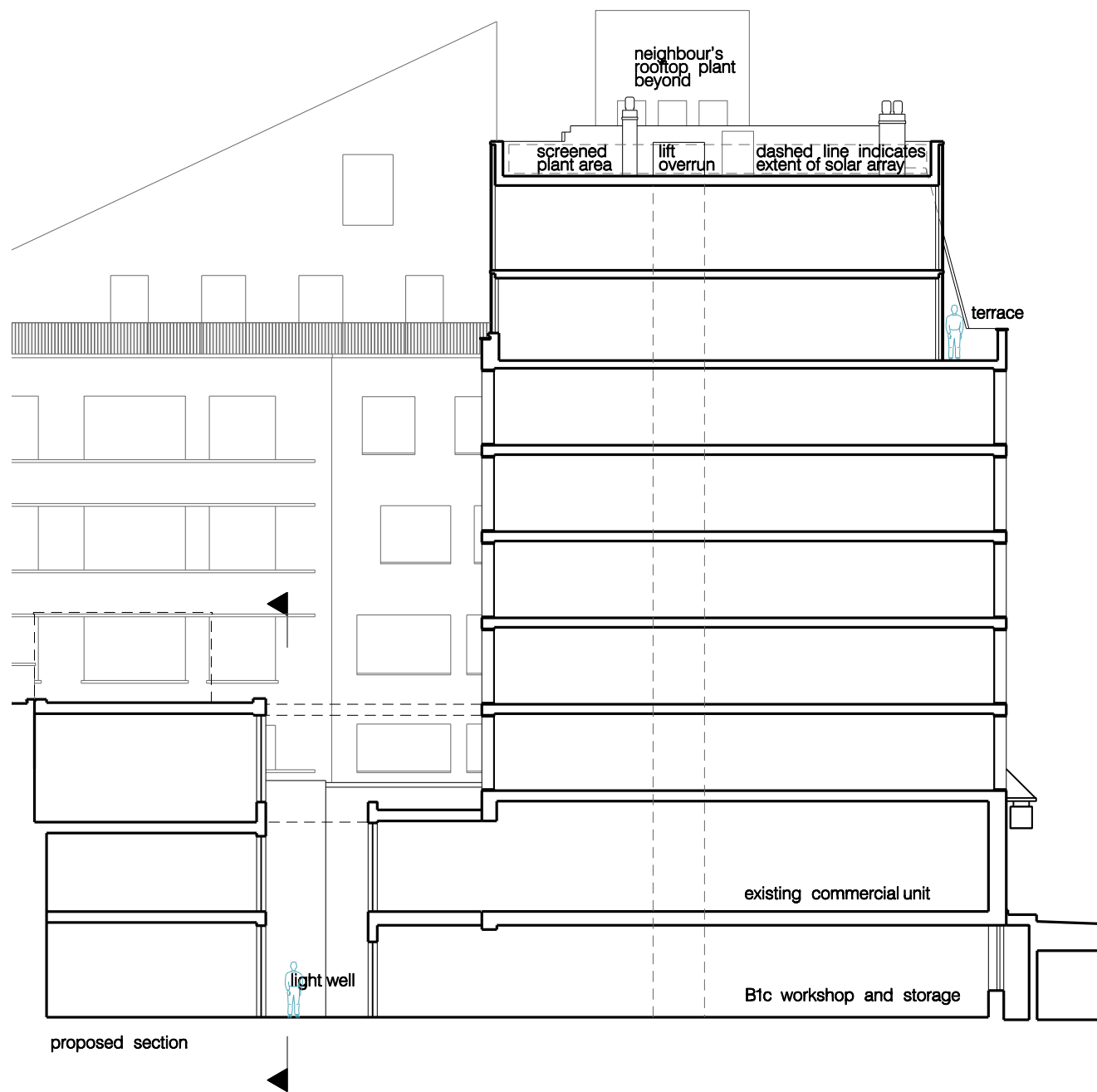
Date: 16.03.16	Drawn: js	Scale: 1:100@a3 1:50@a1	Drawing Number: pl 105	Revision: A
----------------	-----------	----------------------------	------------------------	-------------



- all dimensions are to be checked on site and any discrepancies reported to the architect
 - architect to be informed of any additional information required
 - do not scale this drawing

PLANNING

WORKS architecture 16 upper montagu street london w1h 2an				
tel: 020 7224 8750 fax: 020 7224 8771 e-mail: studio@worksarchitecture.com				
Project: 84 hatton garden				
Title: proposed elevations				
Date: 16.03.16	Drawn: js	Scale: 1:200@a3 1:100@a1	Drawing Number: e 101	Revision:



accommodation schedule:
 lower ground - 1 bedroom
 ground floor - 2 x wheelchair accessible bedrooms + 1 bedroom
 1st floor - 3 x bedroom (front) + 2 x bedroom (rear)
 2nd floor - 4 x bedroom (front)
 3rd floor - 4 x bedroom
 4th floor - 4 x bedroom
 5th floor - 4 x bedroom
 6th floor - 3 x bedroom
 7th floor - 3 x bedroom
 total - 31 bedrooms

0 2m 4m 6m 8m 10m
 - all dimensions are to be checked on site and any discrepancies reported to the architect
 - architect to be informed of any additional information required
 - do not scale this drawing

WORKS architecture 16 upper montagu street london w1h 2an
 tel: 020 7224 8750 fax: 020 7224 8771 e-mail: studio@worksarchitecture.com

Project: 84 hatton garden

Title: proposed sections

Date: 16.03.16	Drawn: js	Scale: 1:200@a3 1:100@a1	Drawing Number: s 101	Revision:
----------------	-----------	-----------------------------	-----------------------	-----------