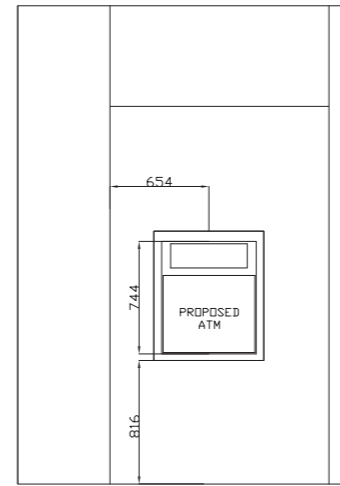




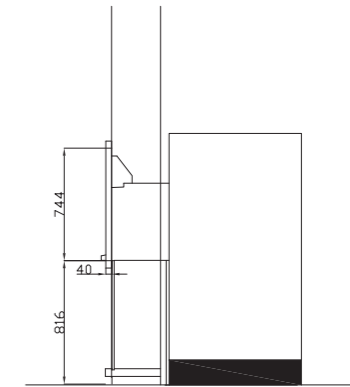
Photo of existing



Proposed signage detail
1:50@A3
 Digitally printed graphic
 White text 255/255/255
 New plum



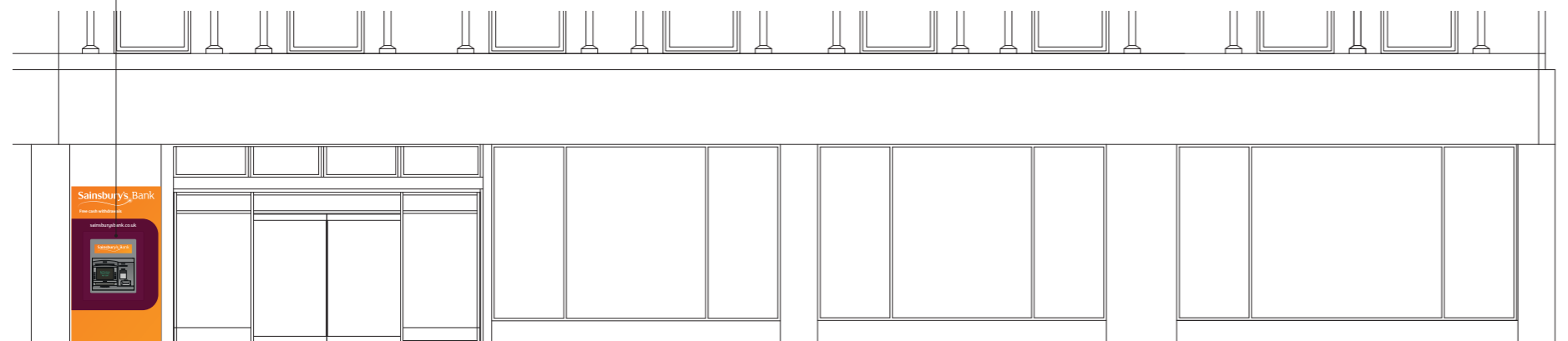
Proposed ATM front elevation
1:50@A3



Proposed ATM side cross section
1:50@A3





Folded dibond panels with digitally printed flair graphic and text.

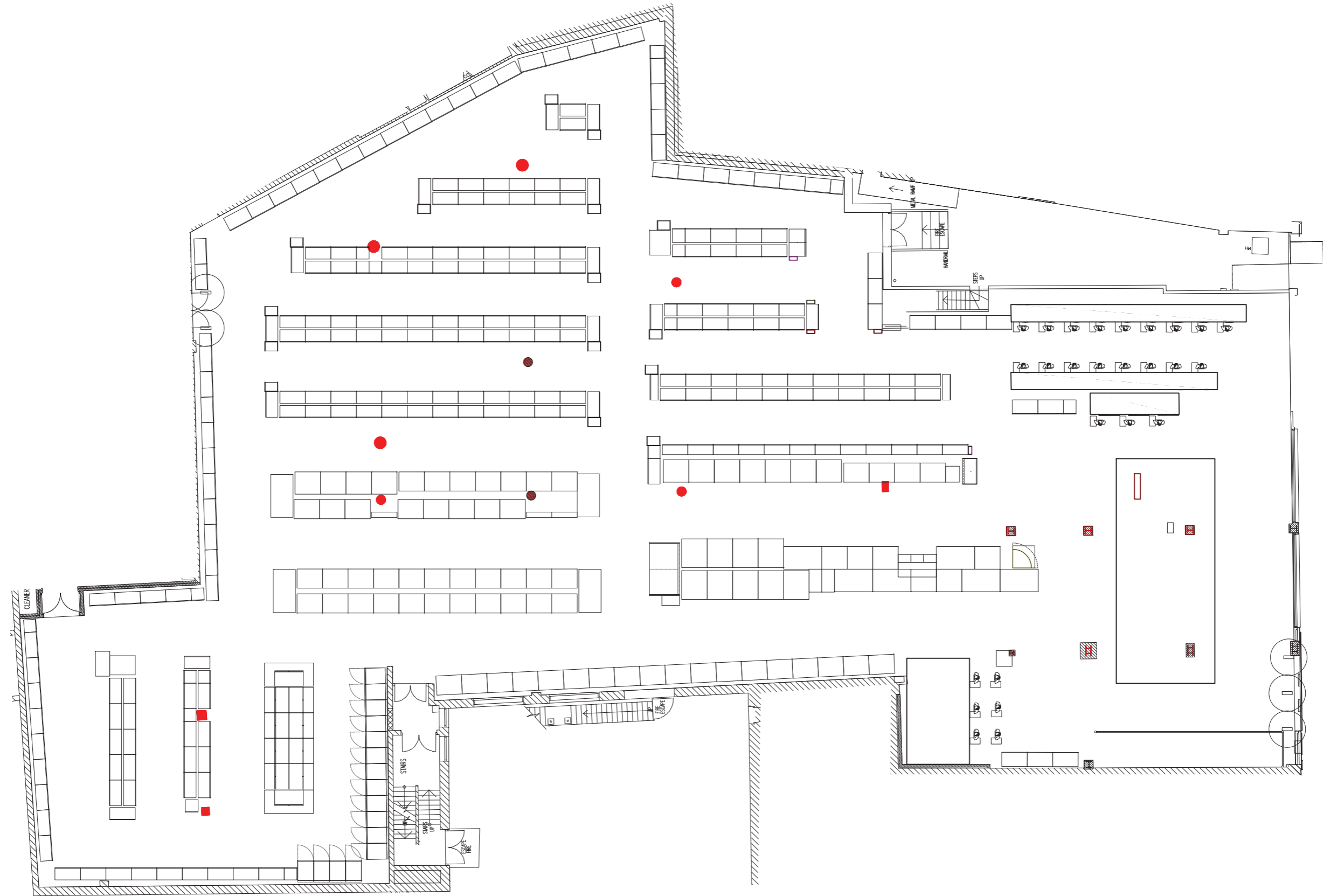


Proposed external elevation
1:100@A3

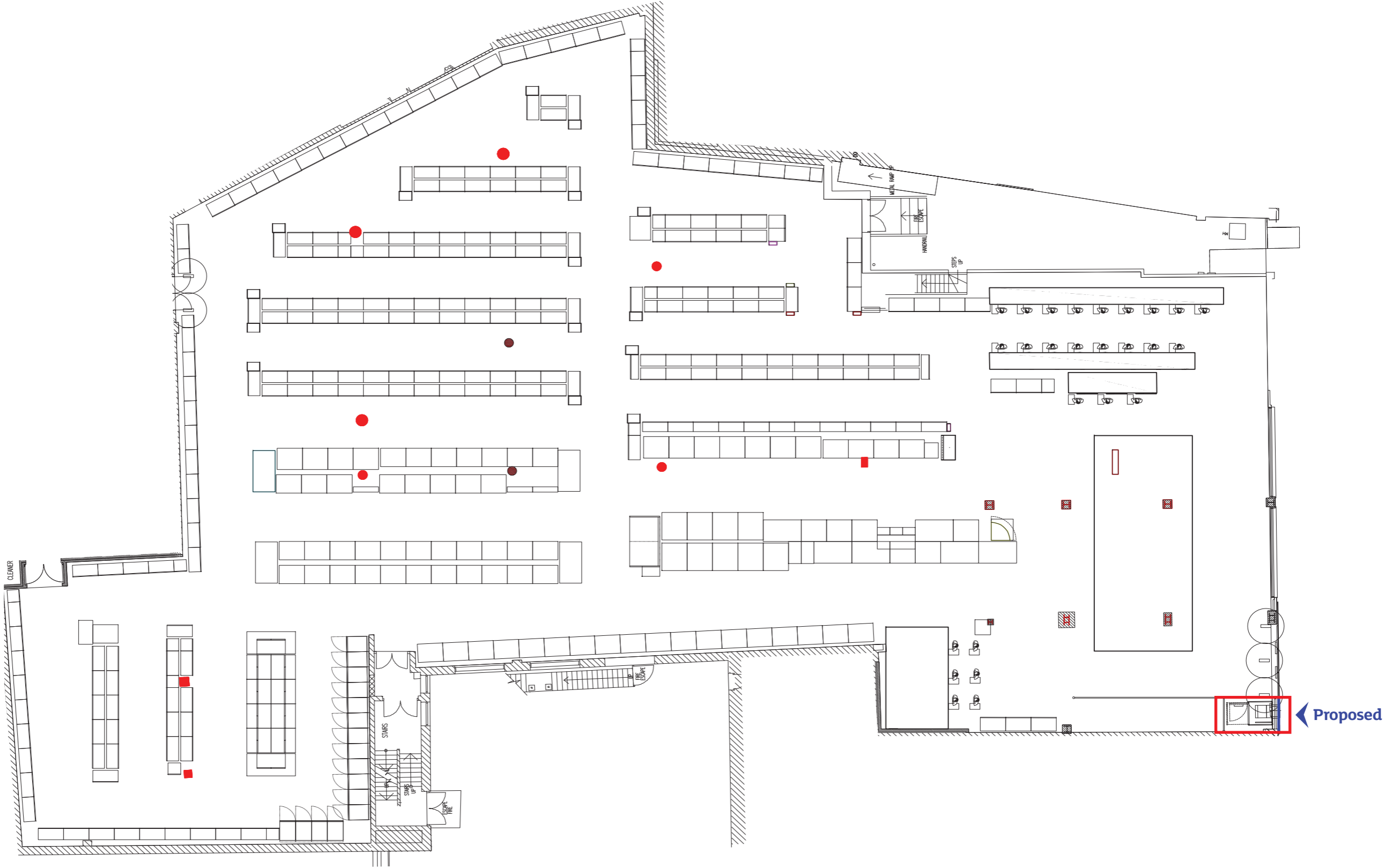


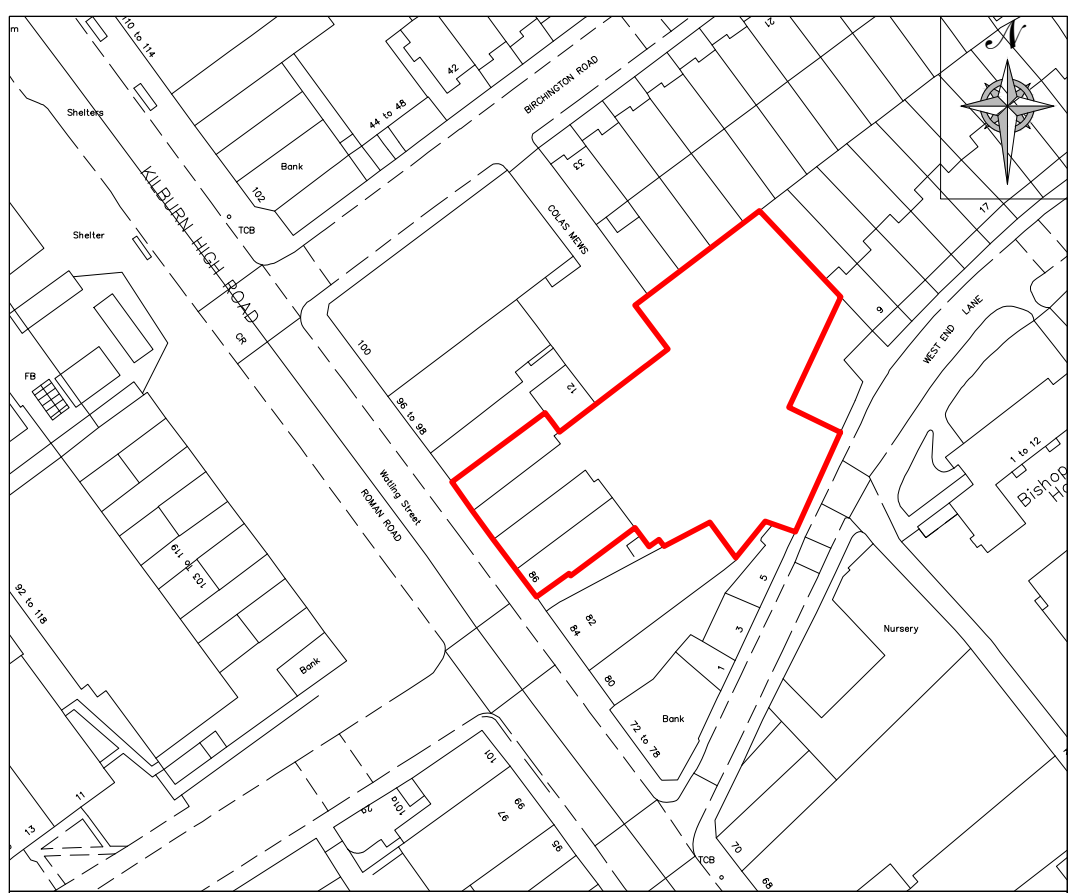
NOTES	REV	REVISIONS	DATE	REV	REVISIONS	DATE	ORIGINATOR	AUTHORISED	PROJECT	 Retail Design Solutions (Consultancy) Ltd Retail Design Solutions (Consultancy) Limited, The Mill Store, Foundry Lane, Epsom, Surrey, CO8 2SR Company Registration No: 4379384 Tel: 01753 224876 Fax: 01753 224776 www.retaildesignsolutions.com info@retaildesignsolutions.com	 STORE DEVELOPMENT GROUP, SAINSBURY'S SUPERMARKETS LTD 33 HOLBORN, LONDON, EC1N 2HT TELEPHONE:- 020 7695 6000 FAX:- 020 7695 7610
	1#	Initial Layout.	10.03.16				RDS/GB	SH	KILBURN		
							DATE	SCALE	ATM PLANNING PROPOSAL		
							10.03.16	1:100 @A3 1:50 @A3	ADDRESS		
							DRAWING NUMBER	REVISION	88-92 KILBURN HIGH ROAD		
							0302G04-ATM	1#	NW6 4HS		

Existing plan
1:200@A3

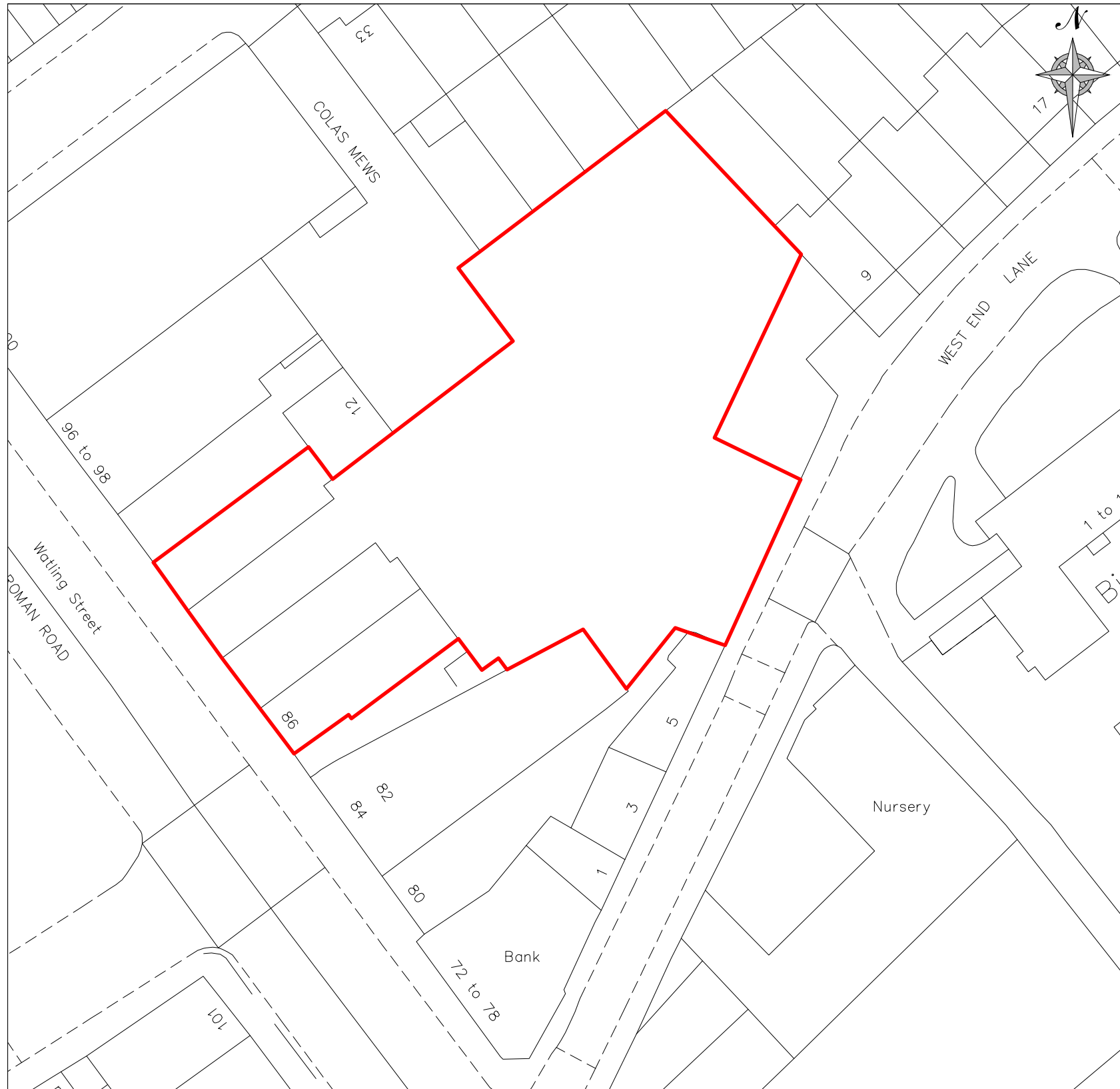


Proposed ATM plan
1:200@A3





Location Plan - 1:1250



Block Plan - 1:500

NOTES

REVISIONS

- Initial layout

0302
KILBURN

LOCATION PLAN
AND BLOCK
PLAN

STORE PLANNER	-	AGENCY	RDS
FIRST ISSUED	-	SCALE	AS SHOWN
DRAWING NUMBER	0302	REVISION	-

Sainsbury's
STORE DEVELOPMENT GROUP, SAINSBURY'S SUPERMARKETS LTD
30 HILBURN, LONDON, EC1N 2HT
TELEPHONE: 020 7895 6000 FAX: 020 7895 7610