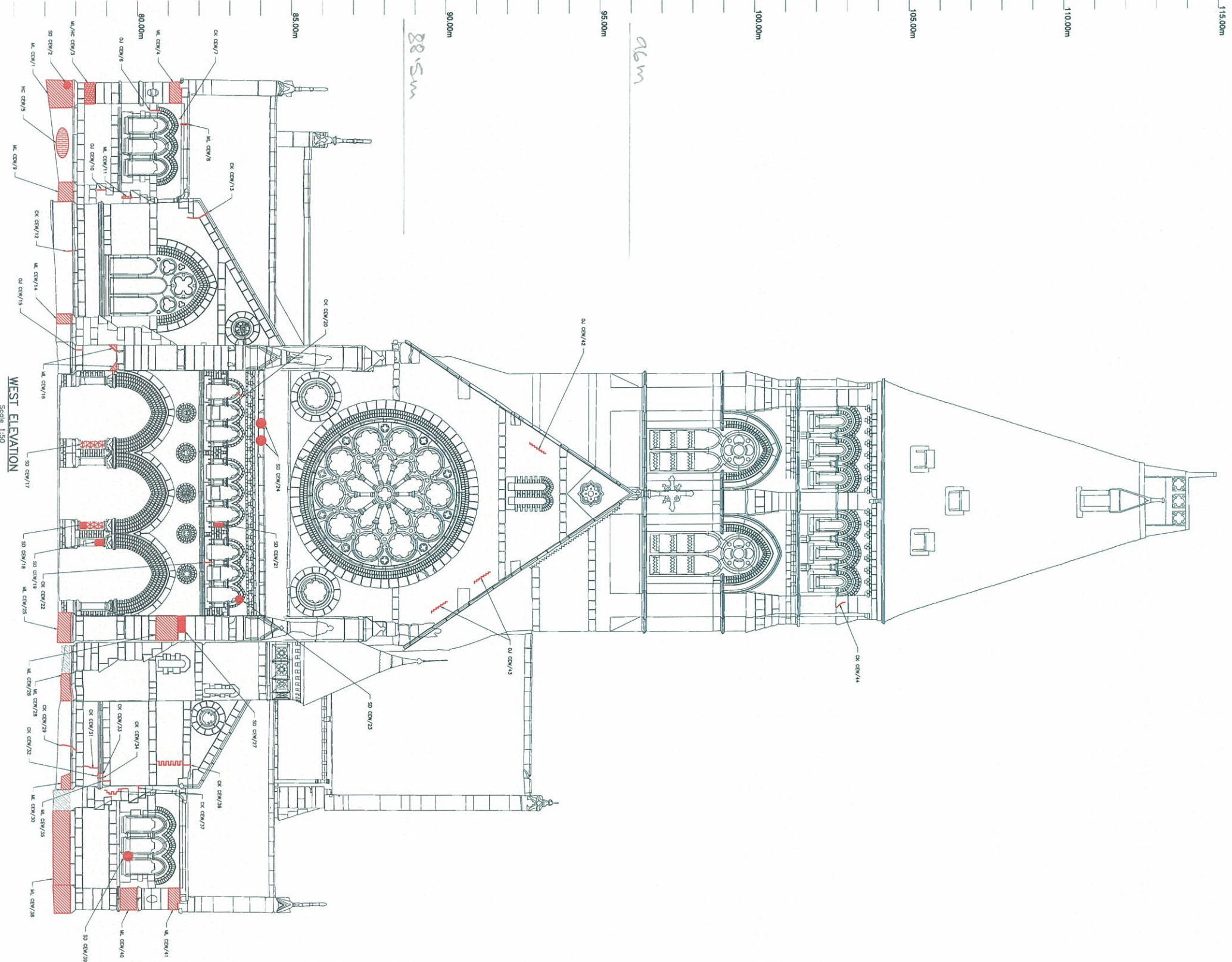


- NOTES:**
- All structural engineering drawings are to be read in conjunction with the preliminary report and related notes.
  - This drawing and related documents represent simplified model forms. Refer to Item Schedule & Company's structural/tilting drawings for additional information.
  - Do not scale from this drawing to other paper or digital drawings. Dimensions are given in millimeters (mm) and rounded to the nearest millimeter. Do not scale from this drawing to other paper or digital drawings.
  - All dimensions are in millimeters and shown in meters.

**LEGEND:**

- M - Member Label
- SO - Surface Opening
- HC - Hidden Condition
- CR - Crack
- CR - Crack 2
- CR - Crack 3
- CR - Crack 4
- CR - Crack 5
- CR - Crack 6
- CR - Crack 7
- CR - Crack 8
- CR - Crack 9
- CR - Crack 10
- CR - Crack 11
- CR - Crack 12
- CR - Crack 13
- CR - Crack 14
- CR - Crack 15
- CR - Crack 16
- CR - Crack 17
- CR - Crack 18
- CR - Crack 19
- CR - Crack 20
- CR - Crack 21
- CR - Crack 22
- CR - Crack 23
- CR - Crack 24
- CR - Crack 25
- CR - Crack 26
- CR - Crack 27
- CR - Crack 28
- CR - Crack 29
- CR - Crack 30
- CR - Crack 31
- CR - Crack 32
- CR - Crack 33
- CR - Crack 34
- CR - Crack 35
- CR - Crack 36
- CR - Crack 37
- CR - Crack 38
- CR - Crack 39
- CR - Crack 40
- CR - Crack 41
- CR - Crack 42
- CR - Crack 43
- CR - Crack 44
- CR - Crack 45
- CR - Crack 46
- CR - Crack 47
- CR - Crack 48
- CR - Crack 49
- CR - Crack 50
- CR - Crack 51
- CR - Crack 52
- CR - Crack 53
- CR - Crack 54
- CR - Crack 55
- CR - Crack 56
- CR - Crack 57
- CR - Crack 58
- CR - Crack 59
- CR - Crack 60
- CR - Crack 61
- CR - Crack 62
- CR - Crack 63
- CR - Crack 64
- CR - Crack 65
- CR - Crack 66
- CR - Crack 67
- CR - Crack 68
- CR - Crack 69
- CR - Crack 70
- CR - Crack 71
- CR - Crack 72
- CR - Crack 73
- CR - Crack 74
- CR - Crack 75
- CR - Crack 76
- CR - Crack 77
- CR - Crack 78
- CR - Crack 79
- CR - Crack 80
- CR - Crack 81
- CR - Crack 82
- CR - Crack 83
- CR - Crack 84
- CR - Crack 85
- CR - Crack 86
- CR - Crack 87
- CR - Crack 88
- CR - Crack 89
- CR - Crack 90
- CR - Crack 91
- CR - Crack 92
- CR - Crack 93
- CR - Crack 94
- CR - Crack 95
- CR - Crack 96
- CR - Crack 97
- CR - Crack 98
- CR - Crack 99
- CR - Crack 100



**ANNE MARIE JOHNSTON**  
Consulting Civil & Structural Engineers

**ST. STEPHEN'S CHURCH**  
ROSSLYN HILL, NW3  
CHURCH EXTERNAL  
WEST ELEVATION

Scale: 1:50 of A3

Project No./Drawing No.: 8529/1104