

THIS DRAWING IS COPYRIGHT OF dRMM LIMITED.
 THE ORIGINAL HARD COPY OF THIS DRAWING HAS BEEN EXECUTED TO SCALE AND IS BASED ON AVAILABLE SURVEY INFORMATION, REPRESENTATION AND ELECTRONIC OBSERVATION AND MAY RESULT IN DISTORTION AND REDUCTION OF DRAWING CONTENT. dRMM LIMITED TAKES NO RESPONSIBILITY FOR MEASUREMENTS OR SCALING TAKEN FROM ANY OTHER DRAWINGS THAN THE ORIGINAL HARD COPY ISSUED BY dRMM AND NO RELIANCE SHOULD BE PLACED ON DIMENSIONS OR DISTANCE MEASUREMENTS. DIMENSIONS FROM THE ARCHITECT OR BY SITE MEASUREMENT. THE SIGNIFICANCE OF ALL STRUCTURAL & SERVICE ELEMENTS MUST ALWAYS BE CHECKED AGAINST THE RELEVANT ENGINEERING DRAWINGS. ANY DISCREPANCIES OR DISCREPANCIES BETWEEN DRAWING INFORMATION SHOULD BE BROUGHT TO THE ATTENTION OF THE CONTRACT ADMINISTRATION.
 dRMM REGISTERED HAS ISSUES RELATING TO CONSTRUCTION DESIGN AND MANAGEMENT TO BE ADDRESSED DURING DESIGN DEVELOPMENT. TO BE READ IN CONJUNCTION WITH DESIGN RISK REGISTER AND RESIDUAL RISK REGISTER.
 ALL INTERNAL LAYOUTS ARE INDICATIVE ONLY.

LANDSCAPE DESIGN SHOWN INDICATIVELY - REFER TO LANDSCAPE ARCHITECT DRAWINGS.
 THE BACKGROUND AND CONTEXT INCLUDING THE FRANCIS CRICK INSTITUTE IS SHOWN FOR ILLUSTRATIVE PURPOSES ONLY. THE ADTS ARE CORRECT BUT THE DRAWING FORM IS NOT BASED UPON SURVEY INFORMATION.
 THESE SHOWN INDICATIVELY AND NOT SHOWN IN FRONT OF BUILDING FOR CLARITY.

NOTES

- A** UNITS FRAMELESS CURTAIN WALLING SYSTEM WITH CIRCA 200MM DEEP GLASS RAINSCREEN FIXED TO OUTSIDE. RAL 9011 STEEL BLUE CERAMIC FRIT TO REAR (FACE 2) OF RAINSCREEN GLASS. GLASS REVEALS AROUND EDGES (TOP, SIDES AND SOFFITS) OF OVERALL RAINSCREEN ZONE TO MATCH.
- B** UNITS FRAMELESS GLASS CURTAIN WALLING SYSTEM WITH EXTRA CLEAR GLASS.
- C** UNITS FRAMELESS GLASS CURTAIN WALLING SYSTEM WITH EXTRA CLEAR GLASS OVER OPAQUE ELEMENTS. SILVER CERAMIC FRIT TO FACE 4.
- D** UNITS FRAMELESS CURTAIN WALLING SYSTEM, DGL WITH EXTRA CLEAR GLASS OVER BESPOKE SILVER PATTERNED CERAMIC FRIT TO FACE 2 AND SOLID SILVER CERAMIC FRIT TO FACE 4 (BOTH TO MATCH C). PATTERN ON FACE 2 TO REFLECT DNA DESIGN OF SOLAR SHADING SCREENS.
- E** FRAMELESS OUTWARD OPENING TOP HUNG WINDOW WITH EXTRA CLEAR GLASS. TRANSOM AND FIXED GLAZED LOWER PANEL.
- F** RECESSED INWARD OPENING SIDE/VERTICALLY HUNG WINDOW WITH EXTERNAL GLAZED JULIET BALUSTRADE AND SATIN ANODISED ALUMINIUM CAPPING. REVEALS FROM RAL 9011 (STEEL BLUE) GLASS TO MATCH FINISH OF A. (BLUE/BLACK ANODISED UA150-2 FRAMES EXTERNALLY) HEAD REVEAL FORMED WITH BLUE/BLACK ANODISED LOUVE (UA150-2).
- G** SILVER METAL STANDING SEAM ROOF INCLUDING HIDDEN GUTTERS (SIMILAR TO THE ROOF COLOUR OF FRANCIS CRICK INSTITUTE).
- H** SATIN ANODISED ALUMINIUM (MECHANICAL/ELECTRICAL MOTORISED) SLIDING SOLAR SHADING SCREENS WITH BESPOKE DNA SAMPLING PERFORATED PATTERN ON DUAL TRACK (UA NATURAL 100A).
- J** EXTERNAL VERTICALLY CANTILEVERED LOW IRON GLASS BALUSTRADE WITH SATIN ANODISED CAPPING TO BALCONIES (1200mm HIGH).
- K** INTERNAL LOW IRON GLASS JULIETTE BALUSTRADE WITH SILVER SATIN ANODISED CAPPING TO SLIDING WINDOWS.
- L** FULL HEIGHT FRAMELESS CURTAIN WALLING SYSTEM WITH T-SECTION STEEL MILLION STICKS & CLEAR LOW IRON GLASS AND ANTI-REFLECTIVE COATING. INTEGRATED FRAMELESS DOORS TO GROUND FLOOR INCLUDING AUTOMATIC ACCESS CONTROLLED SLIDING DOOR TO RESIDENTS LOBBY WITH MATCHING GLASS. BESPOKE GLASS MANIFESTATIONS AS INDICATED. AREAS OF BACKFRIT TO MATCH C AS TAGGED L1.
- M** BALCONY AND WINTERGARDEN SOFFITS: WHITE INTERLOCKED POWDERCOATED ALUMINIUM PANELS WITH HIDDEN FIXINGS.
- N** GROUND FLOOR SOFFIT: SILVER BRIGHTENED ANODISED ALUMINIUM INTERLOCKING PANELS WITH HIDDEN FIXINGS - FORMING SCULPTED SOFFIT (UA NATURAL 100A).
- P** ANODISED EXTRUDED ALUMINIUM C-CHANNEL TO RECEIVE SHUTTER TRACKS WHERE APPLICABLE. VARIOUS FINISHES REQUIRED: TYPICALLY BRIGHTENED SILVER (UA NATURAL 100A). WHERE THE CHANNEL SITS BETWEEN TWO BLUE/BLACK RAINSCREEN ELEMENTS - COLOUR TO BE ANODISED UA 150-2 DARK BLUE. C-CHANNEL PROFILE ALSO VARIES, WHERE CHANNEL SITS BETWEEN TWO RAINSCREEN ELEMENTS - TO BE AN L-CCHANNEL AS A CONTINUATION OF THE C-CHANNEL TOP FLANGE - REFER TO DETAILS.
- Q** UNITS FULL HEIGHT EXTERNALLY FRAMELESS, INTERNAL SLIM FRAMED LOW-IRON GLAZED CURTAIN WALLING SYSTEM TO WINTERGARDENS WITH FIXED AND SLIDING PANELS. AREAS OF ROOF GLAZING TO MATCH AS INDICATED. ROOF WINDOW TO HAVE A WHITE DOT MATRIX CERAMIC FRIT (2-3MM) ALSO INCLUDING INTERNAL CANTILEVERED LOW IRON GLASS BALUSTRADES WITH SATIN ANODISED ALUMINIUM CAPPING (1200mm HIGH).
- R** PROJECTING BAY WITH SINGLE PIECE OF EXTRA CLEAR GLASS TO FRONT WITH BLUE/BLACK BACKFRIT TO EDGE AS INDICATED. GLASS RAINSCREEN TO SOFFIT. ROOF AND SIDES INCLUDING SOLID OPENING VENT TO MATCH A.
- S** FRAMELESS CURTAIN WALLING SYSTEM TO STAIRCASE. TRANSLUCENT PHOTOVOLTAIC PANELS LAMINATED INTO GLAZING ON SOUTHERN FACE OF STAIRCASE ENCLOSURE. INDICATED BY HORIZONTAL HATCH AT GROUND FLOOR. GLASS TO BE LOW IRON TO MATCH L (NON HATCHED AREA).
- T** METAL STAIRCASE RAL 1016 SULPHUR YELLOW.
- U** CONCRETE COLUMNS WITH FINE SMOOTH VISUAL GRADE FINISH.
- V** SLOPED METALLIC FLUSH LOUVE SYSTEM TO MATCH COLOUR OF G PERMITTING NATURAL VENTILATION OF PLANT AREA.

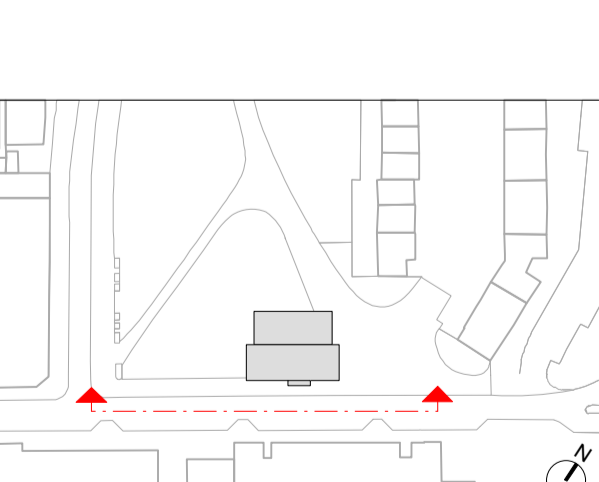
P06	REVISED PLANNING ISSUE			
P05	REVISED PLANNING ISSUE			
O4	STAGE 3 ISSUE			
P03	PLANNING ISSUE			
P02	FINAL PLANNING DRAFT SUBMISSION			

REV	DESCRIPTION	BY	CHK	QA	DATE
P06	PLANNING ISSUE	JLA	WH		21.03.16
P05	PLANNING ISSUE	JLA	WH		25.02.16
O4	STAGE 3 ISSUE	WH	PM		18.12.15
P03	PLANNING ISSUE	WH	PM		30.11.15
P02	FINAL PLANNING DRAFT SUBMISSION	WH	PM		03.11.15

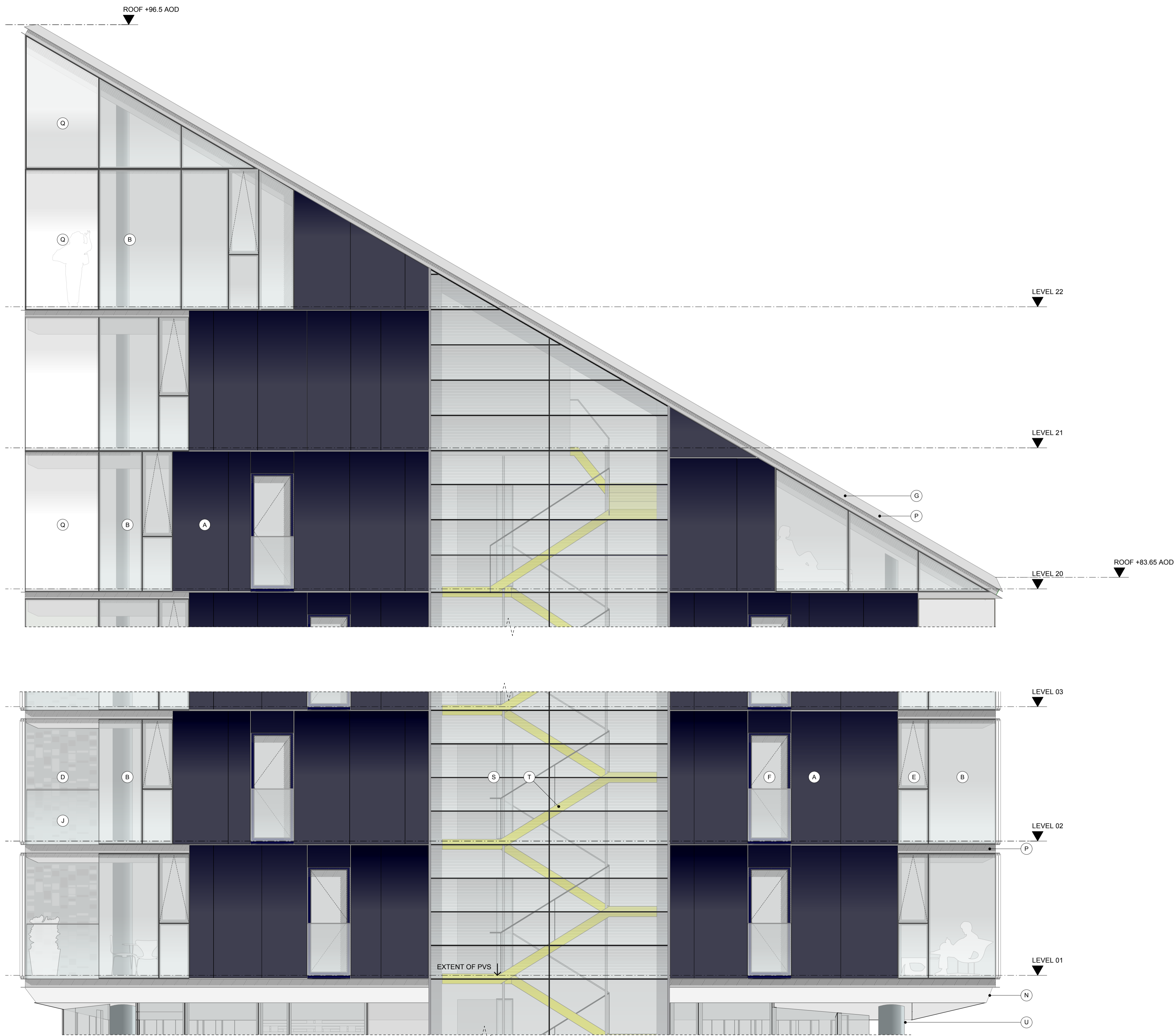
REV	DESCRIPTION	BY	CHK	QA	DATE
P06	PLANNING ISSUE	JLA	WH		21.03.16
P05	PLANNING ISSUE	JLA	WH		25.02.16
O4	STAGE 3 ISSUE	WH	PM		18.12.15
P03	PLANNING ISSUE	WH	PM		30.11.15
P02	FINAL PLANNING DRAFT SUBMISSION	WH	PM		03.11.15

dRMM Ltd
 de Rijke Marsh Morgan Architects
 Magdalen House, 136-140 Tootley St
 London SE3 2TU UK
 T +44 (0)20 7063 0777
 E mail@dRMM.co.uk

SITE PLAN - KEY



AUTHOR		
dRMM ARCHITECTS		
TITLE		
SOUTH BAY ELEVATION		
PROJECT	SCALE	SIZE
BRILL PLACE	1:50	A1
DRAWING NO	1:100	A3
		REVISION
372-ELE-452		P06



1 SOUTH BAY ELEVATION
 SCALE 1:50