

THIS DRAWING IS COPYRIGHT OF dRMM LIMITED.  
 THE ORIGINAL HARD COPY OF THIS DRAWING HAS BEEN EXECUTED TO SCALE AND IS BASED ON AVAILABLE SURVEY INFORMATION, REPRODUCTION AND ELECTRONIC REPRODUCTION MAY RESULT IN DISTORTION AND REDUCTION OF DRAWING CONTENT. dRMM LIMITED TAKES NO RESPONSIBILITY FOR MEASUREMENTS OR SCALE AND TAKES FROM ANY OTHER DRAWINGS THAN THE ORIGINAL HARD COPY ISSUED BY dRMM AND NO RELIANCE SHOULD BE PLACED ON REPRODUCTIONS. dRMM REPRESENTS ONLY AS DESIGNER FROM THE ARCHITECT OR BY SITE MEASUREMENT. THE SCALE OF ALL STRUCTURAL & SERVICE ELEMENTS MUST ALWAYS BE CHECKED AGAINST THE RELEVANT ENGINEERING DRAWINGS. ANY OMISSIONS OR DISCREPANCIES BETWEEN DRAWING INFORMATION SHOULD BE BROUGHT TO THE ATTENTION OF THE CONTRACT ADMINISTRATION. dRMM REGISTER FLAGGED HAS ISSUES RELATING TO CONSTRUCTION DESIGN AND MANAGEMENT TO BE ADDRESSED DURING DESIGN DEVELOPMENT. TO BE READ IN CONJUNCTION WITH DESIGN RISK REGISTER AND RESIDUAL RISK REGISTER. ALL INTERNAL LAYOUTS ARE INDICATIVE ONLY.

1. LANDSCAPE DESIGN SHOWN INDICATIVELY - REFER TO LANDSCAPE ARCHITECT DRAWINGS.  
 2. THE BACKGROUND AND CONTEXT INCLUDING THE FRANCIS CRICK INSTITUTE IS SHOWN FOR ILLUSTRATIVE PURPOSES ONLY. THE ADTS ARE CORRECT BUT THE DRAWING FORM NOT BASED UPON SURVEY INFORMATION.  
 3. THESE ARE SHOWN INDICATIVELY AND NOT SHOWN IN FRONT OF BUILDING FOR CLARITY.

**NOTES**

P06 REVISED PLANNING ISSUE  
 P05 REVISED PLANNING ISSUE  
 O4 STAGE 3 ISSUE  
 P03 PLANNING ISSUE  
 P02 FINAL PLANNING DRAFT SUBMISSION

REVISION NOTES

NO	DESCRIPTION	BY	CHK	QA	DATE
P06	PLANNING ISSUE	JLA	WH		21.03.16
P05	PLANNING ISSUE	JLA	WH		25.02.16
O4	STAGE 3 ISSUE	WH	PM		18.12.15
P03	PLANNING ISSUE	WH	PM		30.11.15
P02	FINAL PLANNING DRAFT SUBMISSION	WH	PM		03.11.15

REV DESCRIPTION BY CHK QA DATE

REV	DESCRIPTION	BY	CHK	QA	DATE

\*\*\*\*\*  
 dRMM Ltd  
 de Rijke Marsh Morgan Architects  
 \*\*\*\*\*  
 Magdalen House, 136-140 Tooley St  
 London SE3 2TU UK  
 T +44 (0)20 7903 0777  
 E mail@dRMM.co.uk  
 \*\*\*\*\*

**SITE PLAN - KEY**



**AUTHOR**  
 dRMM ARCHITECTS

**TITLE**  
 NORTH BAY ELEVATION

PROJECT	SCALE	SIZE
BRILL PLACE	1:50	A1
DRAWING NO	1:100	A3
		REVISION

372-ELE-450 P06

**FACADE MATERIALS**

**A** UNITS FRAMELESS CURTAIN WALLING SYSTEM WITH CIRCA 200M DEEP GLASS RAINSCREEN FIXED TO OUTSIDE. RAL 9011 STEEL BLUE CERAMIC FRIT TO REAR (FACE 2) OF RAINSCREEN GLASS. GLASS REVEALS AROUND EDGES (TOP, SIDES AND SOFFITS) OF OVERALL RAINSCREEN ZONE TO MATCH

**B** UNITS FRAMELESS GLASS CURTAIN WALLING SYSTEM WITH EXTRA CLEAR GLASS.

WHERE INDICATED, INCLUDES SLIM FRAME SLIDING DOOR SYSTEM WITH LEVEL THRESHOLD TO BALCONIES & WINTERGARDENS (BLUE/BLACK ANODISED UA150-2 FRAMES EXTERNALLY TO DOORS AND WINDOWS). ALSO AREAS OF ROOF GLAZING TO MATCH AS INDICATED. SOLID AREAS OF SLIM FRAME SYSTEM TO MATCH C

**C** UNITS FRAMELESS GLASS CURTAIN WALLING SYSTEM WITH EXTRA CLEAR GLASS OVER OPAQUE ELEMENTS. SILVER CERAMIC FRIT TO FACE 4

**D** UNITS FRAMELESS CURTAIN WALLING SYSTEM, DGL WITH EXTRA CLEAR GLASS OVER BESPOKE SILVER PATTERNED CERAMIC FRIT TO FACE 2 AND SOLID SILVER CERAMIC FRIT TO FACE 4 (BOTH TO MATCH C). PATTERN ON FACE 2 TO REFLECT 'DNA' DESIGN OF SOLAR SHADING SCREENS

**E** FRAMELESS OUTWARD OPENING TOP HUNG WINDOW WITH EXTRA CLEAR GLASS. TRANSOM AND FIXED GLAZED LOWER PANEL

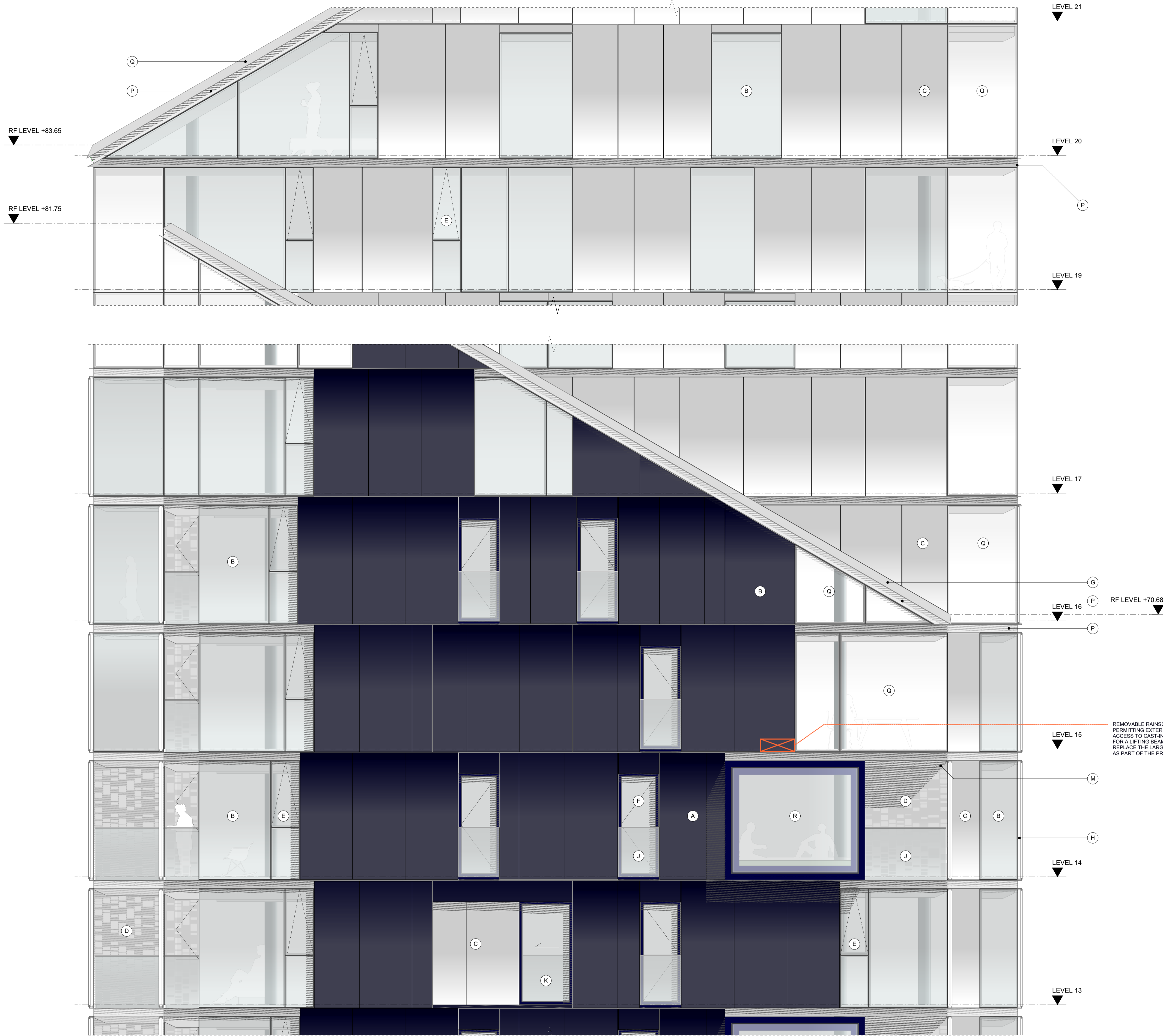
**F** RECESSED INWARD OPENING SIDE/VERTICALLY HUNG WINDOW WITH EXTERNAL GLAZED JULIET BALUSTRADE AND SATIN ANODISED ALUMINIUM CAPPING. REVEALS FROM RAL 9011 (STEEL BLUE) GLASS TO MATCH FINISH OF A. (BLUE/BLACK ANODISED UA150-2 FRAMES EXTERNALLY) HEAD REVEAL FORMED WITH BLUE/BLACK ANODISED LOUVE (UA150-2)

**G** SILVER METAL STANDING SEAM ROOF INCLUDING HIDDEN GUTTERS (SIMILAR TO THE ROOF COLOUR OF FRANCIS CRICK INSTITUTE)

**H** SATIN ANODISED ALUMINIUM (MECHANICAL/ELECTRICAL MOTORISED) SLIDING SOLAR SHADING SCREENS WITH BESPOKE 'DNA' SAMPLING PERFORATED PATTERN ON DUAL TRACK (UA NATURAL 100A)

**J** EXTERNAL VERTICALLY CANTILEVERED LOW IRON GLASS BALUSTRADE WITH SATIN ANODISED CAPPING TO BALCONIES (1200mm HIGH)

**K** INTERNAL LOW IRON GLASS JULIETTE BALUSTRADE WITH SILVER SATIN ANODISED CAPPING TO SLIDING WINDOWS



REMOVABLE RAINSCREEN PANEL PERMITTING EXTERNAL BMU ACCESS TO CAST-IN CONNECTIONS FOR A LIFTING BEAM TO INSTALL & REPLACE THE LARGE GLASS PIECES AS PART OF THE PROJECTING BAY

1 NORTH BAY ELEVATION  
 SCALE 1:50