

WALLING ID & FORCES								
Waller Ref	Section	Waller Section	Waller Load SLS (kN/m)	Waller Load ULS (kN/m)	Max SLS Shear (kN)	Max SLS Moment (kN)	Max ULS Shear (kN)	Max ULS Moment (kN)
W1	1-3	610x305 UKB179	135	182.5	515	-710	695	-960
W2	4	533x312 UKB182	180	243	560	-595	755	-800
W2	5-6	533x312 UKB182	50	67.5	175	-210	275	-370
W3	9	305x165 UKB54	20	27	-75	-85	-100	-130

PROP ID & FORCES			
Prop Ref	Prop Section	SLS Prop Force (kN)	ULS Prop Force (kN)
P7	305x305 UKC97	510	710
P9	356x368 UKC153	700	990
P10	533x312 UKB182	1240	1670
P15	356x368 UKC153	985	1370
P16	203x203 UKC46	50	65
P17	203x203 UKC46	400	540
P18	203x203 UKC46	500	680
P27	305x305 UKC97	365	495
P28	305x305 UKC97	300	400
P13	203x203 UKC46	45	60
P22	203x203 UKC46	105	140
P23	203x203 UKC46	150	200
P24	203x203 UKC46	120	160
P19	356x368 UKC153	900	1215
P20	305x305 UKC97	650	880
P21	203x203 UKC46	95	135
P29	203x203 UKC46	110	150
P30	305x305 UKC97	575	800
P31	914x305 UKC201	TBC	TBC

GENERAL NOTES

1. Existing building outlines are approximate for guidance only.

KEY

Precise Level

Ground level

Kingpost installed in 600mm dia hole drilled by 360° excavator

Props

Waling

Remnant of existing structure retained

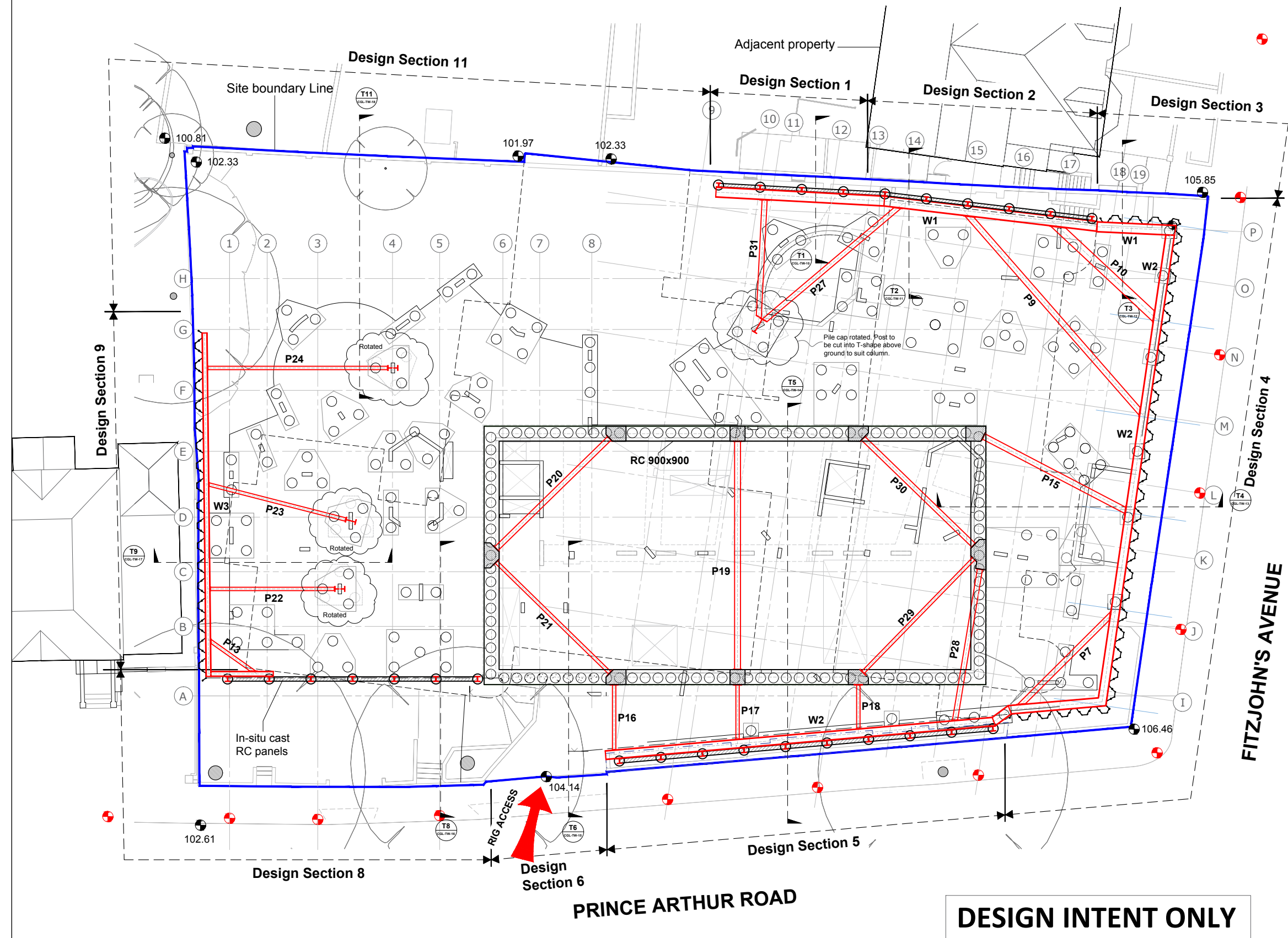
Temporary batter

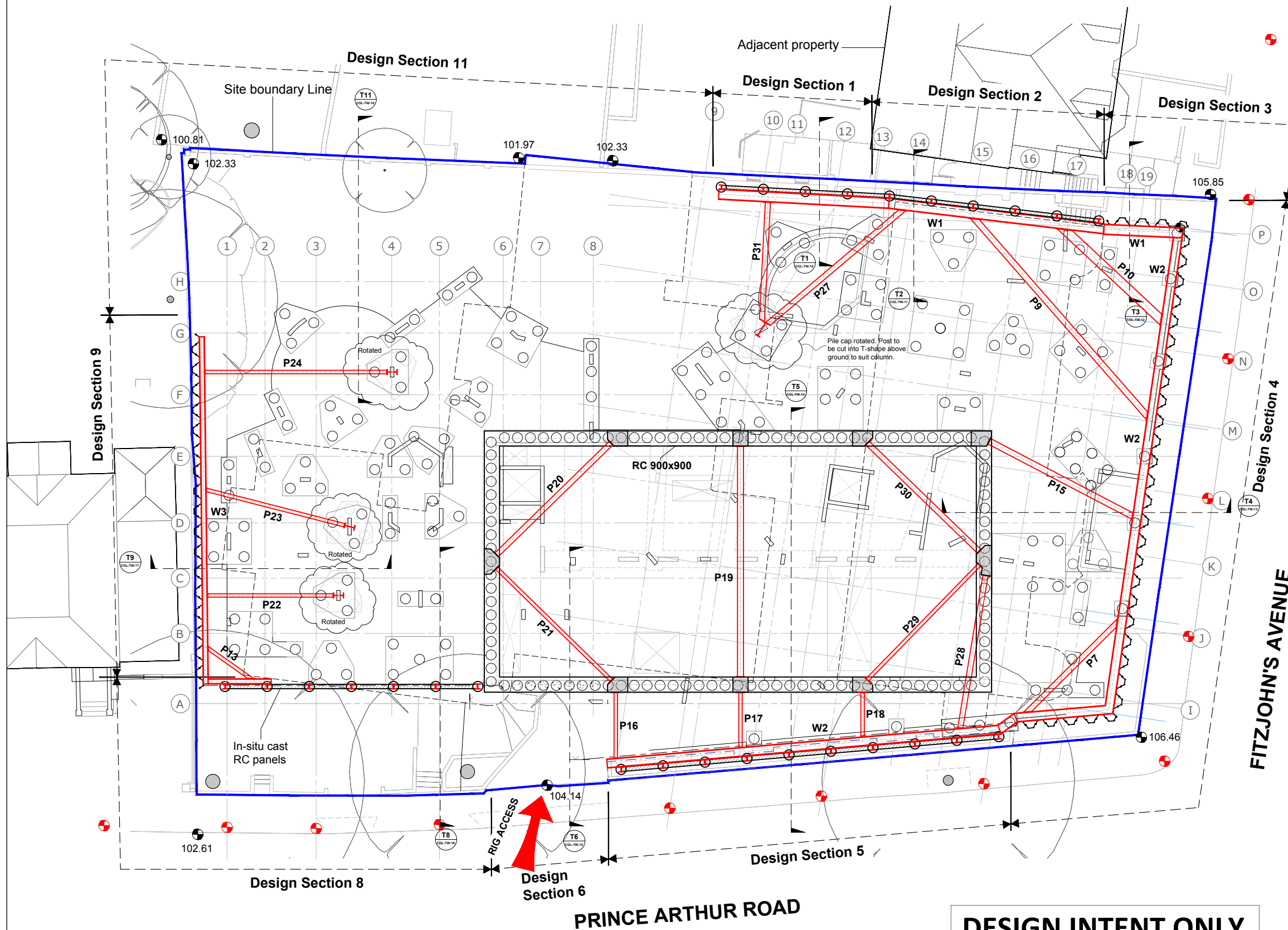
Site boundary

Existing building

Temp corbel to be removed after props are removed

P1	26/02/16	First issue
Rev	Date	Comments
<div><div><div></div></div><div>CGL</div><div>Card Geotechnics Ltd 4 Godalming Business Centre Woolsack Way Godalming Surrey GU7 1XW T: 01483 310600</div></div>		
Project	79 Fitzjohn's Avenue	
Client	Pegasus Life	
Drawing title	Prop ID & Walling Forces	
Scale(s)	1:250	Job No. CGL/09008
Drawn	OS	22/02/16
Checked		
Approved		
Dwg No. CGL-TW-00		Rev. P1
© This drawing is the copyright of Card Geotechnics Limited. It may not be reproduced or amended without the written approval of Card Geotechnics		






DESIGN INTENT ONLY

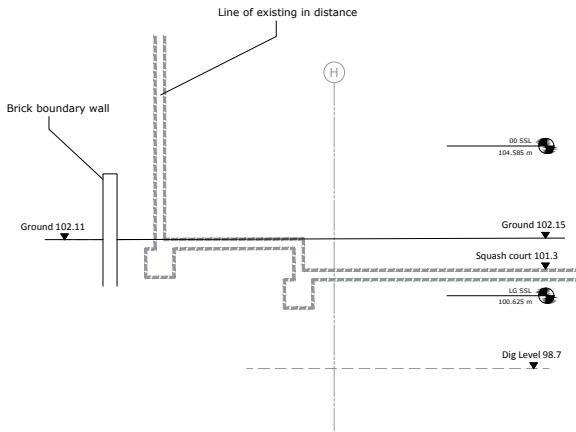
- GENERAL NOTES
- Existing building outlines are approximate for guidance only.
 - Primary TW design only - It is expected that this specialist ground worker will develop all connection details & working / fabrication series drawings.

KEY

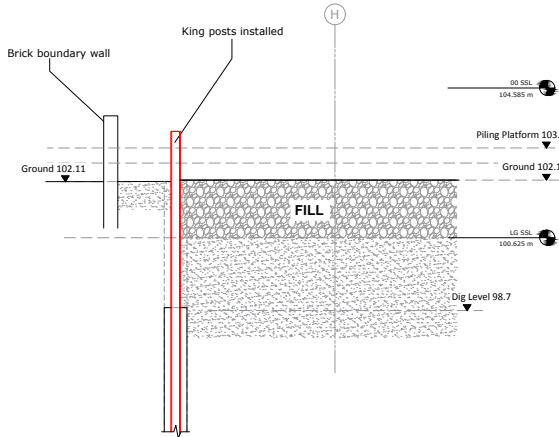
- Precise Level
- Ground level
- Kingpost installed in 600mm dia hole drilled by 360° excavator
- Props
- Waling
- Remnant of existing structure retained
- Temporary batter
- Site boundary
- Existing building
- Temp corbel to be removed after props are removed

P2	26/02/16	Prop 31 & prop nrs added + general notes
P1	12/02/16	First issue
Rev	Date	Comments
<div><div>Card Geotechnics Ltd 4 Godalming Business Centre Woolsack Way Godalming Surrey GU7 1XW T: 01483 310600</div></div>		
Project 79 Fitzjohn's Avenue		
Client Pegasus Life		
Drawing title Temporary Works Master Plan		
Scale(s) 1:250		Job No. CGL/09008
Drawn OS 02/02/16	Dwg No. CGL-TW-01	Rev. P2
© This drawing is the copyright of Card Geotechnics Limited. It may not be reproduced or amended without the written approval of Card Geotechnics		

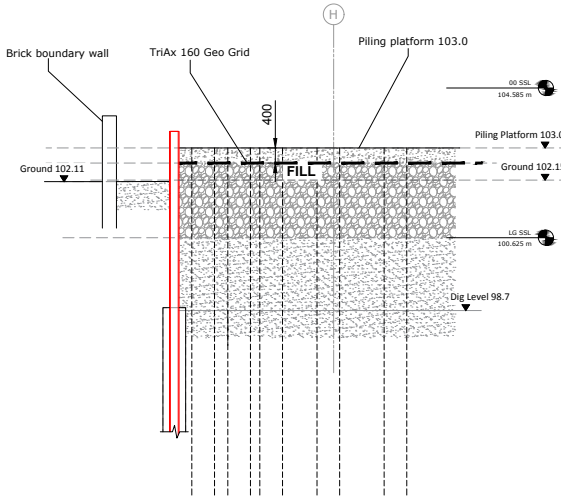
Stage 1 - Phase 1 Enabling
(Post above ground demo)



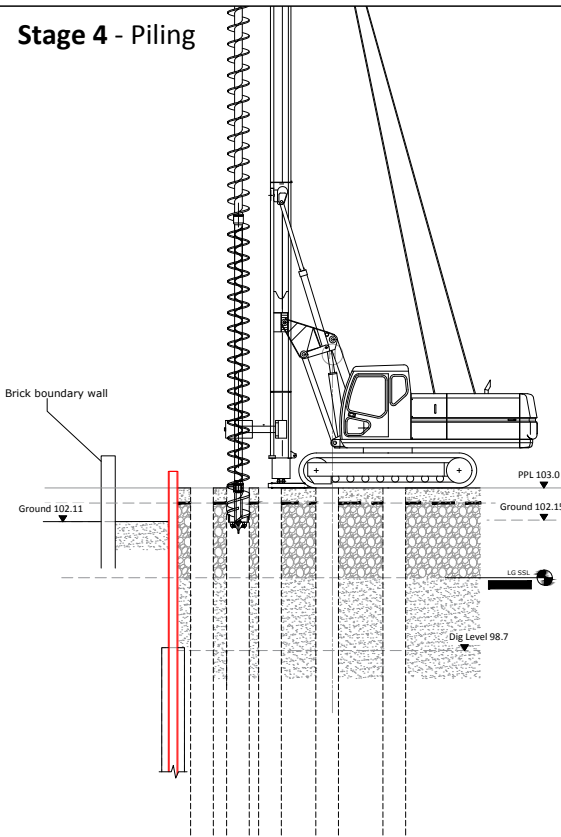
Stage 2 - Install King Posts



Stage 3 - Prepare Piling Platform



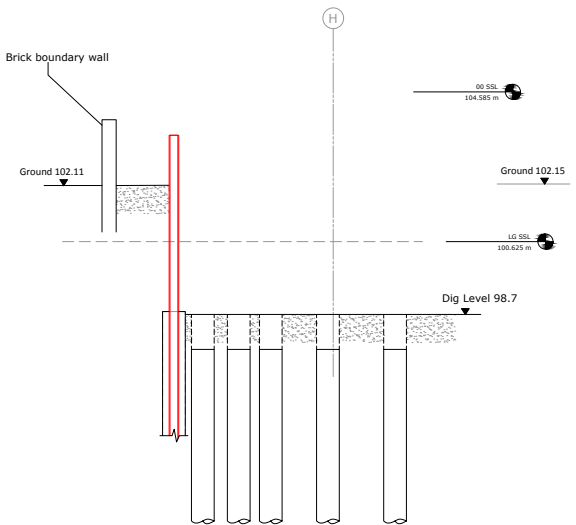
Stage 4 - Piling



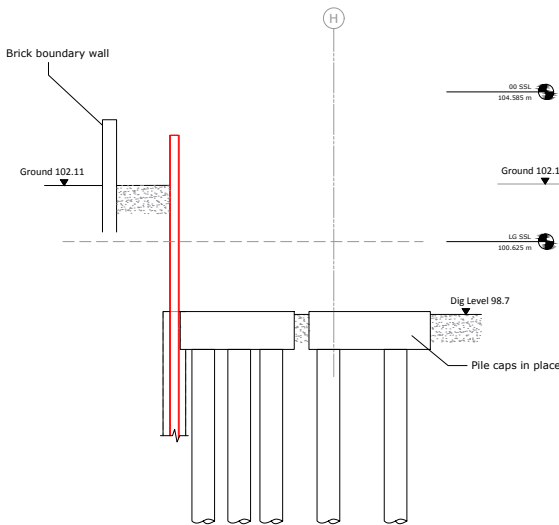
GENERAL NOTES

1. See CGL Drawing nr. EW-01 to 06 for location of section.

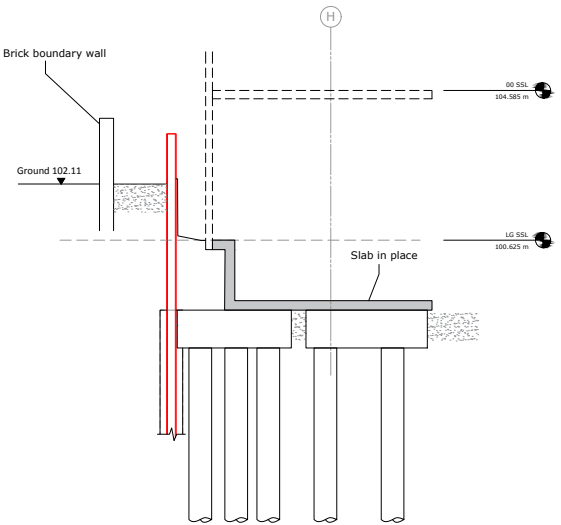
Stage 5 - Bulk Dig



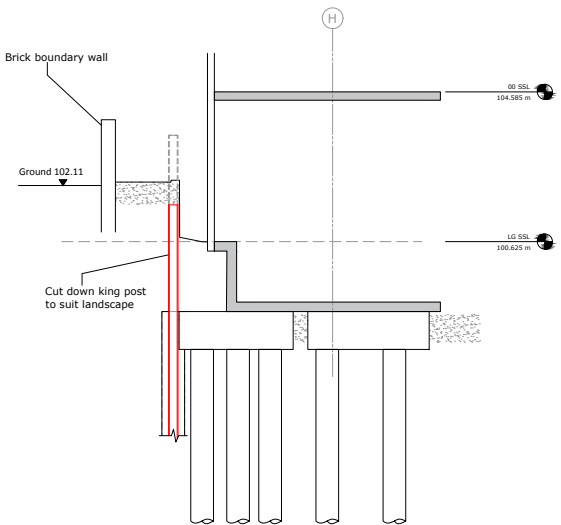
Stage 6 - Construct Pile Caps & Blinding




Stage 7 - Construct Slab & Uprand



Stage 8 - Basement Complete



P1	12/02/16	First issue.
Rev	Date	Comments
		Card Geotechnics Ltd 4 Godalming Business Centre Woolsack Way Godalming Surrey GU7 1XW T: 01483 310600
Project		79 Fitzjohn's Avenue
Client		Pegasus Life
Drawing title		Construction Sequence at T1 - T1
Scale(s) 1:200		Job No. CGL/09008
Drawn	OS	Dwg No. CGL-TW-10
Checked	05/02/16	
Approved		
		Rev. P1

© This drawing is the copyright of Card Geotechnics Limited. It may not be reproduced or amended without the written approval of Card Geotechnics

[illegible]

Diagram illustrating the proposed structure and ground levels. Key features include:

- Adjacent property wall** (dashed line)
- Boundary Party Wall** (solid line)
- Structure removed in a controlled hit & miss basis** (indicated by a red dashed arrow)
- Ground 104.39** (indicated by a downward arrow)
- Ground 102.6** (indicated by a downward arrow)
- Existing slab level 102.0** (indicated by a horizontal line with a downward arrow)
- 00 SLL 104.385 m** (indicated by a horizontal line with a downward arrow)
- 14 SLL 100.625 m** (indicated by a horizontal line with a downward arrow)
- Circle H** (indicated by a circle with the letter H inside)

Technical drawing showing a proposed retaining wall and piling platform. The drawing includes the following elements and labels:

- Adjacent property wall**: Indicated by a dashed line and an arrow pointing to the left boundary.
- Boundary Party Wall**: A solid line representing the wall structure, with a vertical section showing internal reinforcement.
- Ground 102.6**: The existing ground level, marked with a downward arrow.
- TriAx 160 Geo Grid**: A layer of reinforcement material, shown as a pattern of small circles, located below the ground level.
- Piling platform 103.0**: A horizontal line representing the proposed platform level, marked with an upward arrow.
- FILL**: The area between the ground and the piling platform, filled with a pattern of small circles.
- Structure removed in a controlled hit & miss basis**: A dashed line indicating the location of a structure to be removed.
- 00 SSL 104.385 m**: A horizontal line representing the 00 SSL level, marked with an upward arrow.
- PPL 103.0**: A horizontal line representing the Piling Platform Level, marked with an upward arrow.
- LG SSL 100.625 m**: A horizontal line representing the LG SSL level, marked with an upward arrow.

[illegible]


Diagram illustrating a cross-section of a retaining wall structure. Key components and labels include:

- Adjacent property wall**: A vertical wall on the left side of the diagram.
- Boundary Party Wall**: A vertical wall separating the property from the adjacent property wall.
- Ground 102.6**: The ground level on the left side of the wall.
- Walling**: The main retaining wall structure, shown with a sloped face and a horizontal top.
- Retain berm**: A horizontal section of the wall structure.
- PPL**: Proposed Pavement Level, indicated by a horizontal dashed line.
- LG 55.1** and **59.62 m**: Ground level markers on the right side of the wall.
- H**: A vertical line with a circle 'H' at the top, indicating the height of the wall.

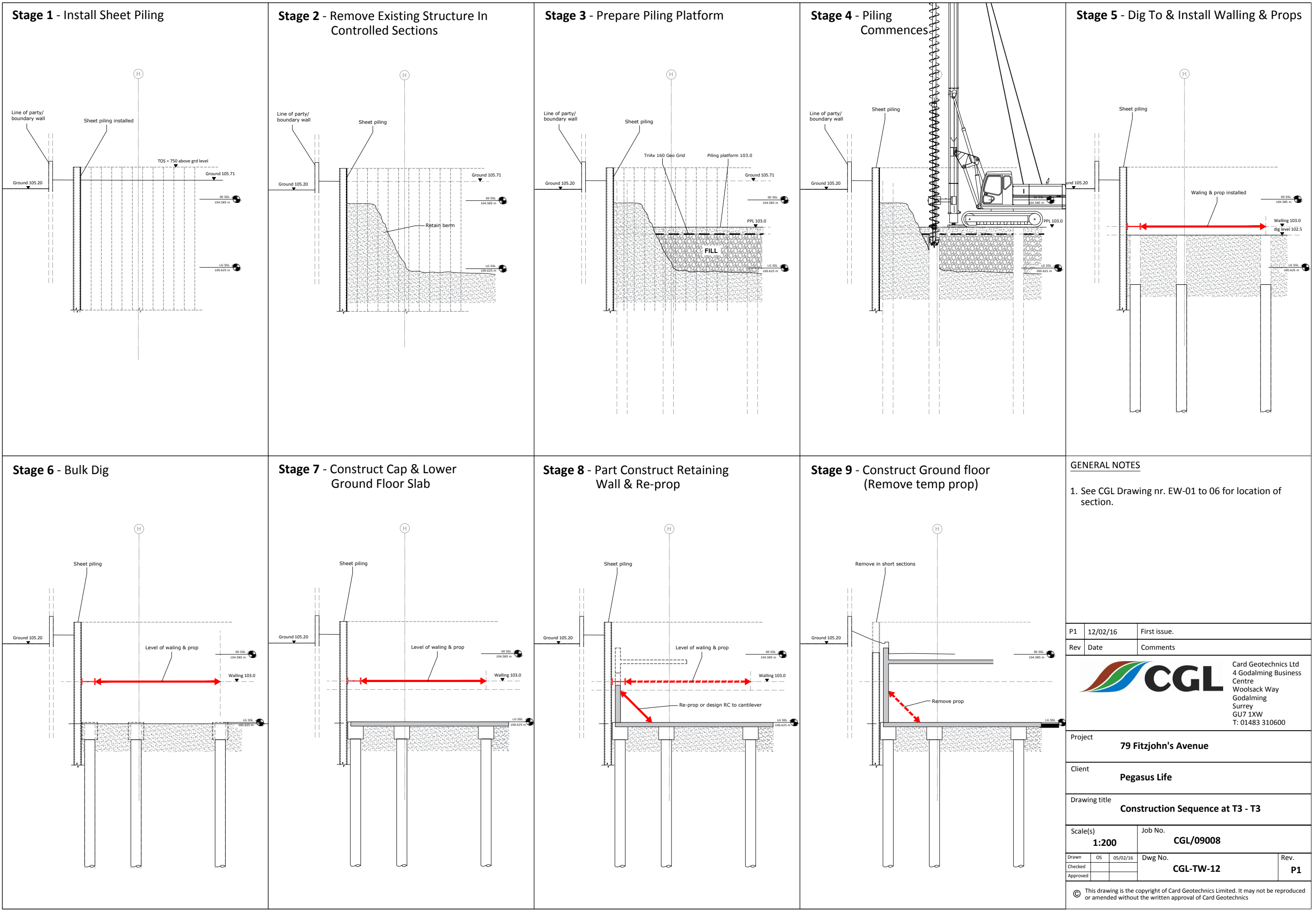
Technical drawing illustrating a cross-section of a wall and foundation. The drawing shows an adjacent property wall, a boundary party wall, and the ground level (102.6). A walling is shown with a walling level of 103.0. A prop is installed, and the drawing includes a section line H-H. The drawing also shows a foundation and a prop installed, with a level of 100.625 indicated.

Diagram illustrating a wall removal and replacement project. The diagram shows an adjacent property wall, a boundary party wall, and a ground level of 102.6. A wall is being removed, and a new wall is being re-propped or designed as a cantilever. A prop is removed, and a new wall is being built. The diagram also shows a horizontal line labeled 'PPL' and a vertical line labeled 'H'.

1. See CGL Drawing nr. EW-01 to 06 for location of section.

P1	12/02/16	First issue.
Rev	Date	Comments
		Card Geotechnics Ltd 4 Godalming Business Centre Woolsack Way Godalming Surrey GU7 1XW T: 01483 310600
Project 79 Fitzjohn's Avenue		
Client Pegasus Life		
Drawing title Construction Sequence at T2-T2		
Scale(s) 1:200		Job No. CGL/09008
Drawn Checked Approved	OS 	Dwg No. CGL-TW-11
		Rev. P1

© This drawing is the copyright of Card Geotechnics Limited. It may not be reproduced or amended without the written approval of Card Geotechnics



Technical drawing showing a cross-section of a retaining wall and drainage system. Key features include:

- RC wall
- RC retaining wall toe
- Existing concrete drain
- Ground 103.9
- Ground 102.66
- Ground 103.74
- Existing ground at trial pit 13.102.3
- Scale: 0 to 100.625 m
- Section line A-A

Diagram illustrating a crawler-mounted drilling rig with a 600-dia auger attachment. The rig is positioned on a concrete pad. A red arrow points from the rig's operator's position to the auger. The diagram shows the ground level at 102.66 and the existing concrete drain at 100.625. The auger is shown drilling a hole into the ground. The diagram is labeled with 'C', 'B', and 'A' at the top.

The diagram illustrates a construction method for a bridge pier. A vertical line represents the pier's position, with three points labeled C, B, and A from left to right. A horizontal line represents the ground level at 102.66. A dashed line indicates the 'Remove existing structure' area. A red dashed arrow points from the pier towards the left, labeled 'Remove prop'. A vertical red line is labeled 'Harjack or similar'. A horizontal line is labeled 'Existing ground at trial pit 13 102.3'. A vertical line is labeled 'Packing'. A horizontal line is labeled '103.9'. A vertical line is labeled '104.580 m'. A horizontal line is labeled '100.625 m'. A vertical line is labeled '81.55L'. A horizontal line is labeled '94.480 m'.

1. See CGL Drawing nr. EW-01 to 06 for location of section.

Technical drawing of a retaining wall cross-section. The wall is shown in profile on the right, with a vertical red line indicating the wall face. The wall is labeled "Harjack or similar" and "Packing". The wall is supported by a "TriAx 160 Geo Grid" which is embedded in a "FILL" material. The fill is shown with a cross-hatched pattern. A "PPL 103.0" is indicated on the left. The drawing includes a scale bar at the bottom right showing "0+ 480" and "94.480 m". The drawing is labeled "B" and "A" at the top.

Technical drawing illustrating the construction of a bridge pier using a crawler crane on a barge. The drawing shows the crane lifting a pile (PPL 103.0) into the pier structure. The pier is shown in cross-section, with the barge positioned on the water. The drawing includes labels for the crane, the pile, the pier structure, and the water level. The drawing also includes a plan view of the barge and a cross-section of the pier.

Labels and dimensions:

- FILL
- PPL 103.0
- Harjack or similar
- Packing
- OG SSL 104.585 m
- LG SSL 100.625 m
- BL SSL 94.480 m

Heading Berm

The diagram illustrates a cross-section of a heading berm. Key features include:

- Retain nominal soil berm:** A sloped area of soil above the excavation.
- Trench sheeted excavation for capping beam:** A rectangular excavation area with sheet piling walls.
- Underpin wall:** A vertical wall structure on the right side of the excavation.

Elevation markers on the right side indicate the following levels:

- 00 SSL: 104.585 m
- UG SSL: 100.625 m
- B1 SSL: 94.480 m

Vertical grid lines are labeled A, B, and C from right to left.

© This drawing is the copyright of Card Geotechnics Limited. It may not be reproduced or amended without the written approval of Card Geotechnics

Technical drawing showing a cross-section of a walling structure. The drawing includes the following elements:

- Walling:** A vertical structure on the right side of the drawing.
- Remove prop:** A label pointing to a horizontal structure on the left side of the drawing.
- Back filled:** A label pointing to the area behind the walling structure.
- Elevation Markers:**
 - 104.7 (with a downward arrow)
 - 103.0 (with a downward arrow)
 - GD 550 (Ground Level 550)
 - 104.000 m
 - UG 550 (Underground Level 550)
 - 100.625 m
 - B1 550
 - 94.400 m
- Red Arrow:** A red arrow pointing from the 'Remove prop' label to the walling structure.
- Red Dashed Line:** A red dashed line extending from the left side of the drawing towards the walling structure.

Technical drawing of a bridge pier cross-section. The drawing includes the following elements:

- Grid Lines:** Vertical grid lines are labeled C, B, and A from left to right. Horizontal grid lines are labeled 104.7, 104.55, 104.585, 104.55, and 94.485 from top to bottom.
- Structural Components:**
 - Remove prop:** Indicated by a red arrow pointing to a horizontal line at grid 104.7.
 - Remove corbel:** Indicated by a red arrow pointing to a vertical line at grid 104.55.
 - Back filled:** Indicated by a red arrow pointing to a hatched area on the right side of the pier.
- Dimensions and Levels:**
 - Horizontal dimensions: 104.7, 104.55, 104.585, 104.55, and 94.485.
 - Vertical dimensions: 104.7, 104.55, 104.585, 104.55, and 94.485.
- Annotations:**
 - "Remove prop" and "Remove corbel" are written in black text.
 - "Back filled" is written in black text.

Technical drawing showing a cross-section of a table structure. The drawing includes a horizontal table top and a vertical leg. A red line indicates the removal of the top of the king post to suit landscaping. The drawing is labeled with 'A' and 'B' at the top. Elevation markers on the right indicate heights: 104.585 m (100 S.S.), 100.425 m (LG S.S.), and 94.480 m (B1 S.S.).

1. See CGL Drawing nr. EW-01 to 06 for location of section.

 **CGL**
Card Geotechnics Ltd
4 Godalming Business
Centre
Woolsack Way
Godalming
Surrey
GU7 1XW
T: 01483 310600

© This drawing is the copyright of Card Geotechnics Limited. It may not be reproduced or amended without the written approval of Card Geotechnics

