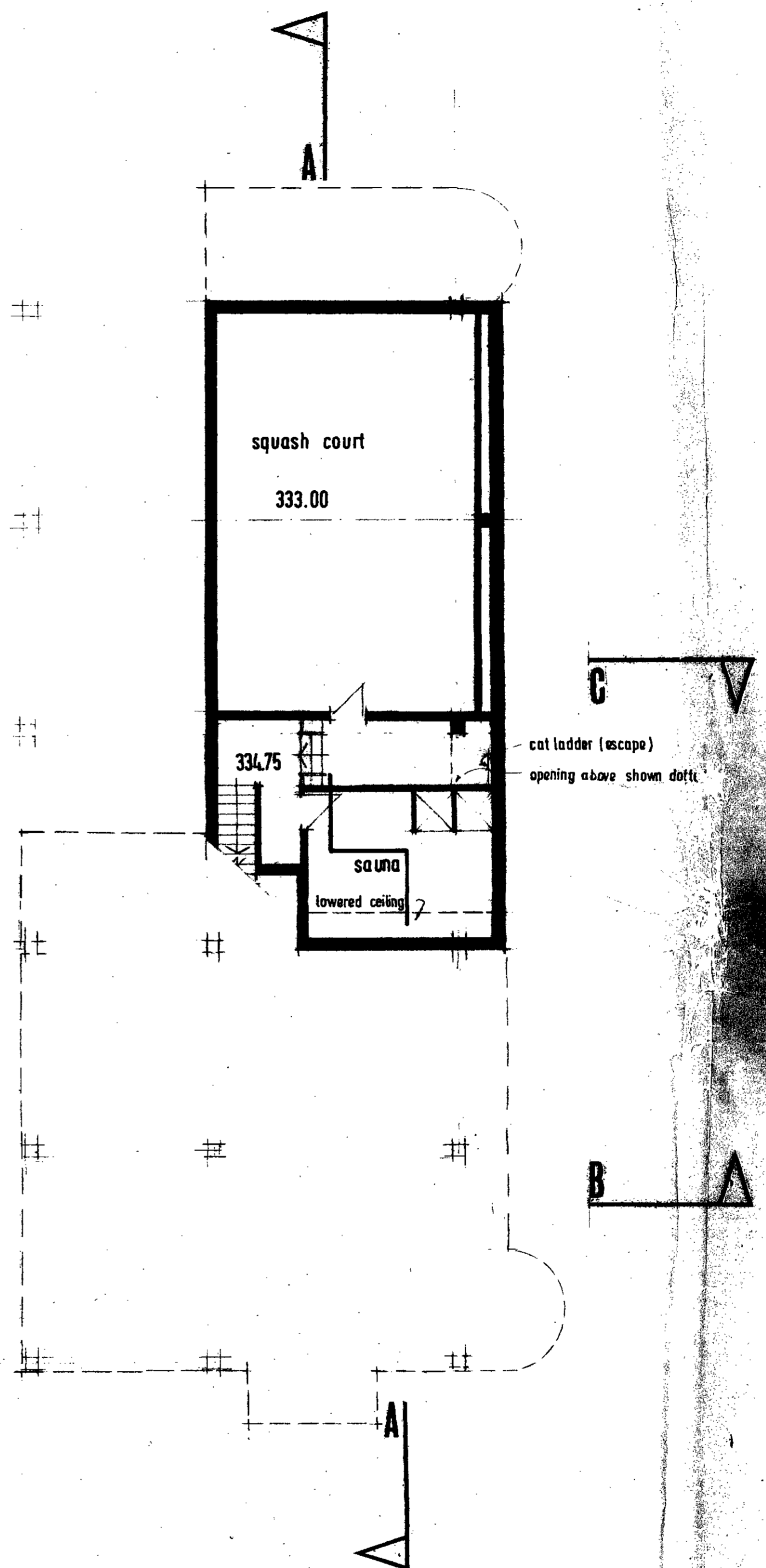
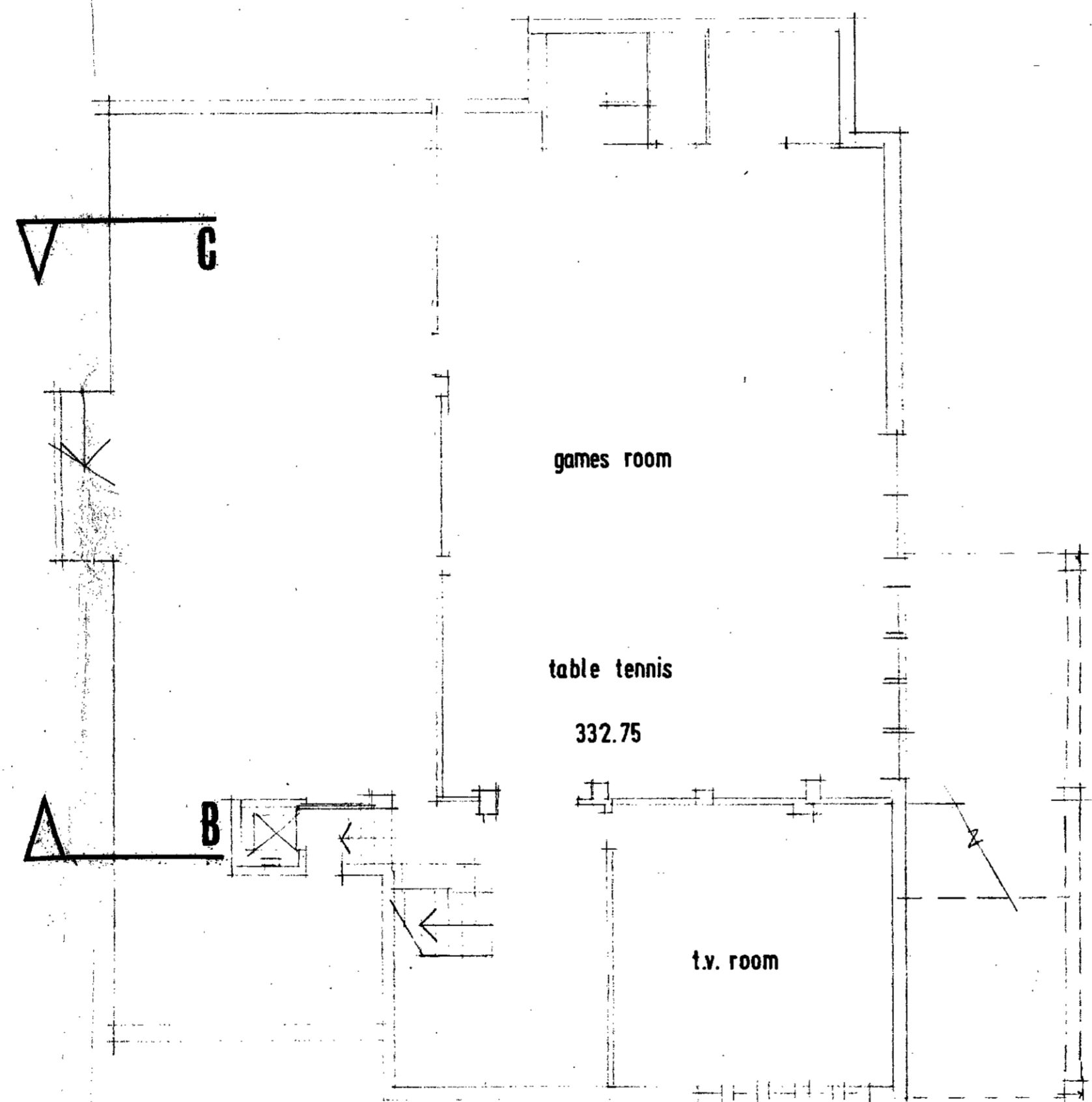
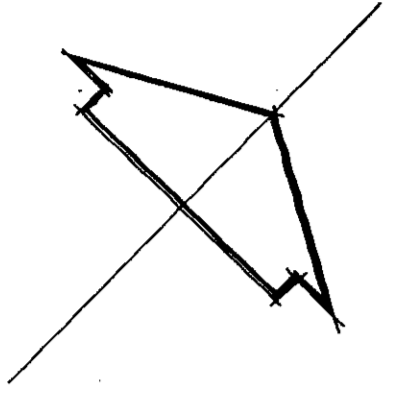


## **APPENDIX B**

*Existing building plans*

this drawing is not to be scaled.  
all dimensions to be checked on site.

22567 (R1)  
(1)



PLAN level -1

332.75 FT. 333.00 FT.  
101.156 M 101.232 M

-1

LONDON BOROUGH OF CAMDEN  
TOWN AND COUNTRY PLANNING ACTS  
26 OCT 1976  
APPROVED PLANS  
NOT APPROVED  
ON BEHALF OF THE COUNCIL

LONDON BOROUGH OF CAMDEN  
TOWN AND COUNTRY PLANNING ACTS  
26 OCT 1976  
RECOMMENDATION AGREED  
ON BEHALF OF THE COUNCIL

F6/26/5/22567  
(R1)

GERALD SHENSTONE  
AND PARTNERS  
ARCHITECTS

28 BLOOMSBURY SQUARE WC1A 2PN  
01 636 8595

HYELM HOSTEL PHASE 2  
79 Fitzjohns Avenue NW3

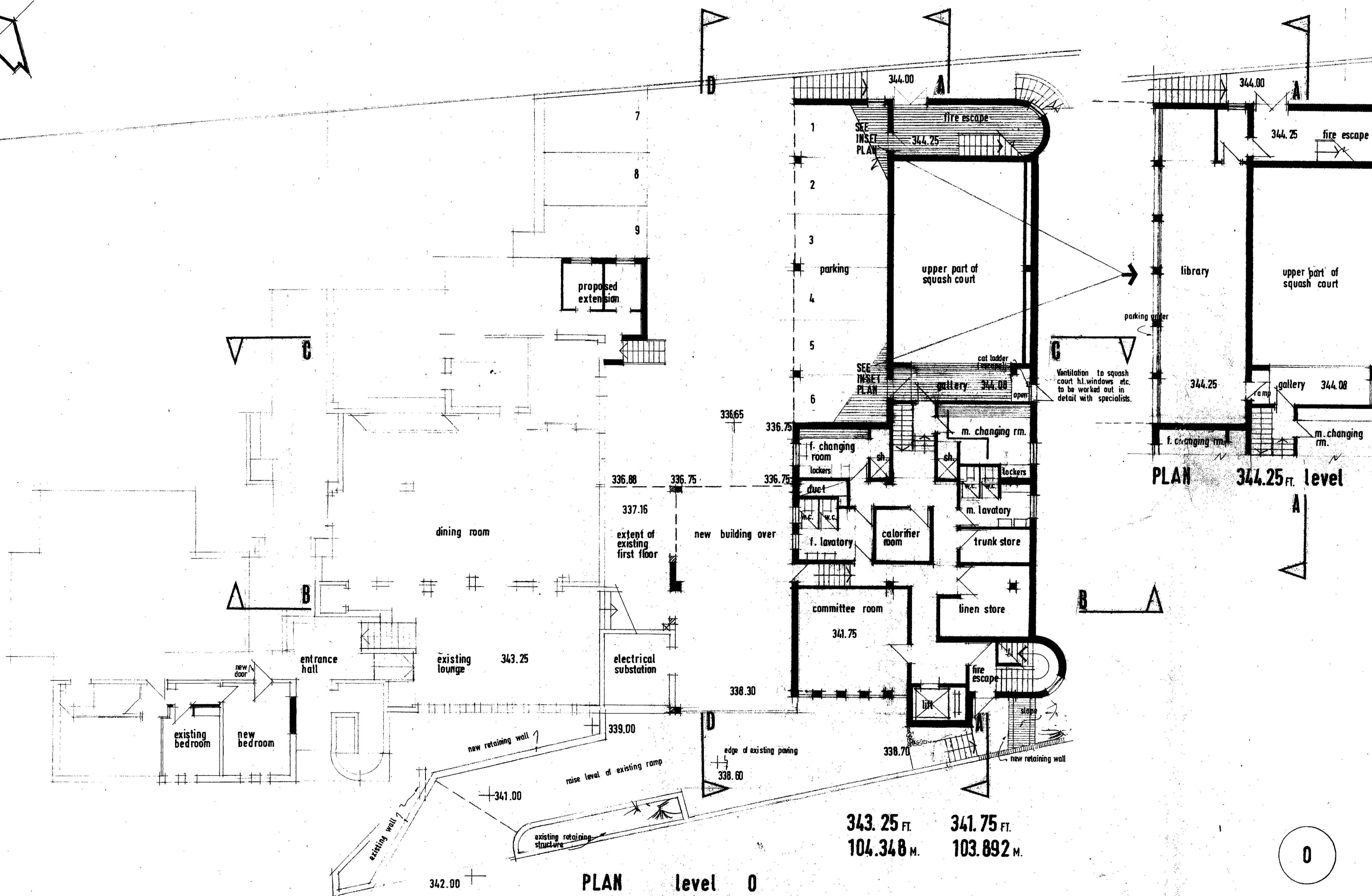
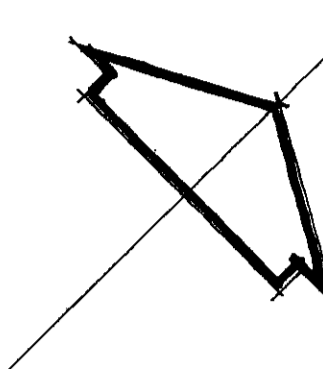
PLAN LEVEL -1

project	5004
scale	1:100
date	SEP 1976
drawn	A.S.K.

1A

this drawing is not to be scaled.  
all dimensions to be checked on site.

22567 (R)  
(2)



PLAN 344.25 ft. level

PLAN level 0

LONDON BOROUGH OF CAMDEN  
TOWN AND COUNTRY PLANNING ACTS  
26 OCT 1976  
APPROVED  
BY THE COUNCIL

LONDON BOROUGH OF CAMDEN  
TOWN AND COUNTRY PLANNING ACTS  
26 OCT 1976  
RECOMMENDATION AGREED  
BY HALF OF THE COUNCIL

E6/26/5/22567  
(R)

GERALD SHENSTONE  
AND PARTNERS  
ARCHITECTS

26 BLOOMSBURY SQUARE WC1A 2PN  
01 636 8595

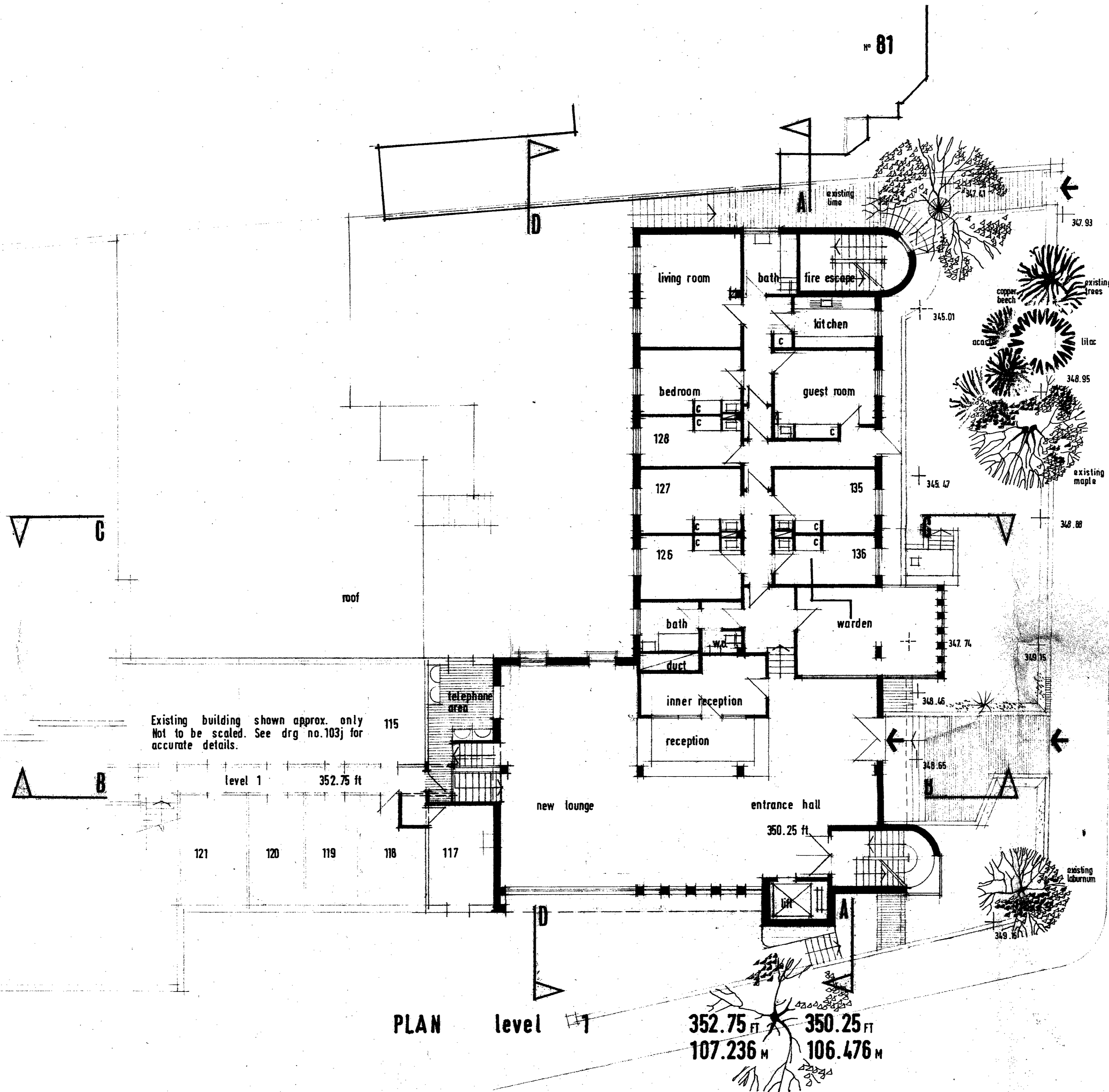
HYELM HOSTEL PHASE 2  
79 Fitzjohns Avenue NW3

PLAN LEVEL 0

project	5004	2A
scale	1:100	
date	SEP. 1976	
drawn	A.S.K.	

this drawing is not to be scaled.  
all dimensions to be checked on site.

22567(R)  
(3)



LONDON BOROUGH OF CAMDEN  
TOWN AND COUNTRY PLANNING ACTS  
26 OCT 1976  
PLANS APPROVED  
ON BEHALF OF THE COUNCIL

LONDON BOROUGH OF CAMDEN  
TOWN AND COUNTRY PLANNING ACTS  
26 OCT 1976  
RECOMMENDATION AGREED  
ON BEHALF OF THE COUNCIL

FB/26/5/22567(R)

GERALD  
SHENSTONE  
AND  
PARTNERS ARCHITECTS

26 BLOOMSBURY SQUARE WC1A 2PN  
01 838 8595

HVELM HOSTEL PHASE 2  
79 Fitzjohns Avenue NW3

PLAN LEVEL 1

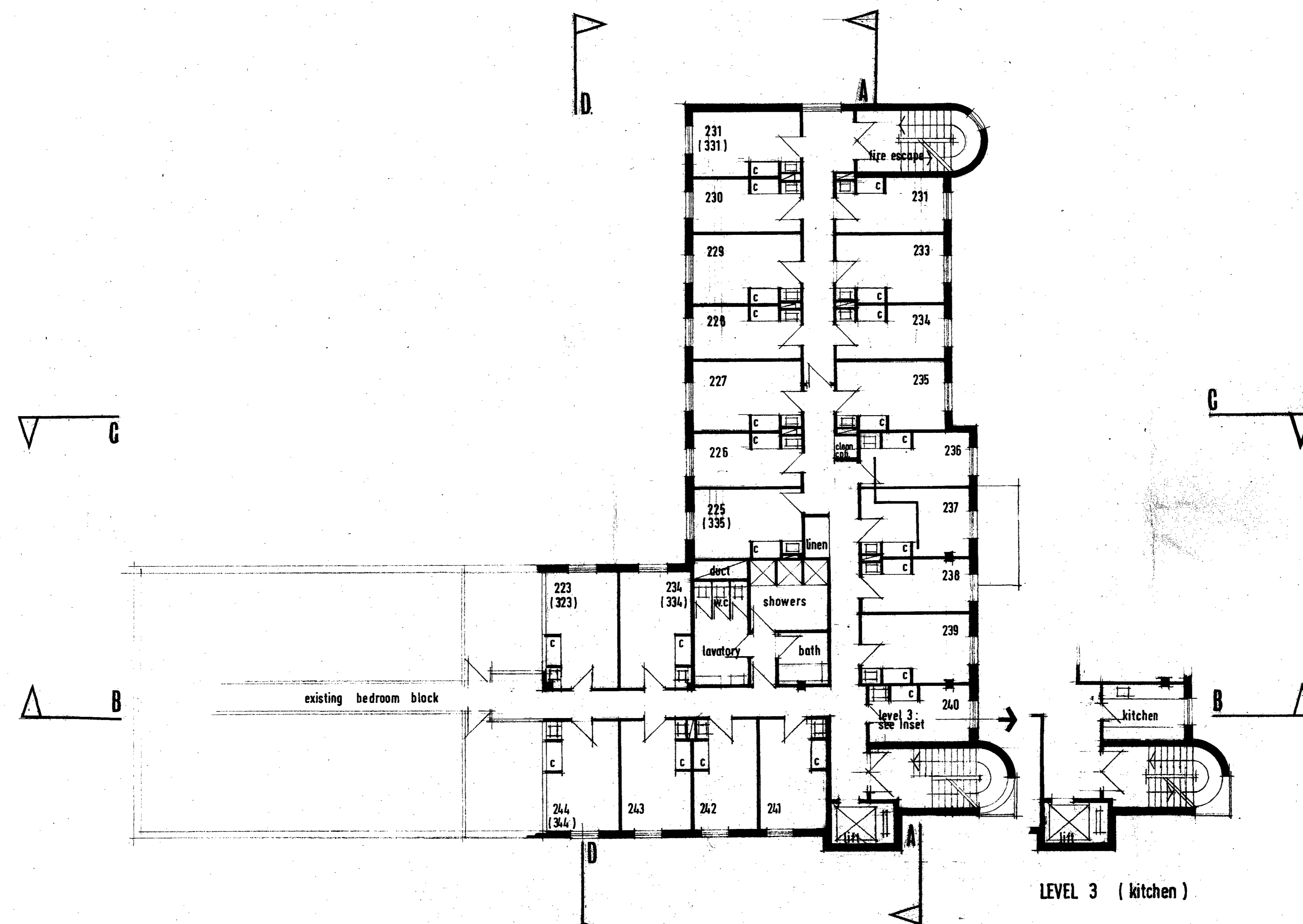
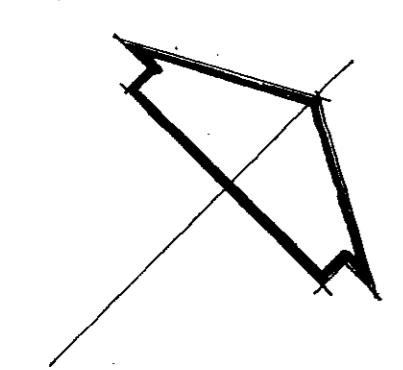
project	5004
scale	1:100
date	SEP. 1976
drawn	A.S.K.

1

3A

this drawing is not to be scaled.  
all dimensions to be checked on site.

22567(R)  
(4)



PLAN level 2&3 370.75 FT 361.75 FT  
112.70 M 109.972 M

LEVEL 3 (kitchen)

2&3

LONDON BOROUGH OF CAMDEN  
TOWN AND COUNTRY PLANNING ACTS  
26 OCT 1976  
PLANS APPROVED  
ON BEHALF OF THE COUNCIL

LONDON BOROUGH OF CAMDEN  
TOWN AND COUNTRY PLANNING ACTS  
26 OCT 1976

Rb/26/5/22567(R)

GERALD SHENSTONE  
AND PARTNERS ARCHITECTS

26 BLOOMSBURY SQUARE WC1A 2PN  
DI 636 8595

HVELM HOSTEL PHASE 2  
79 Fitzjohns Avenue NW3

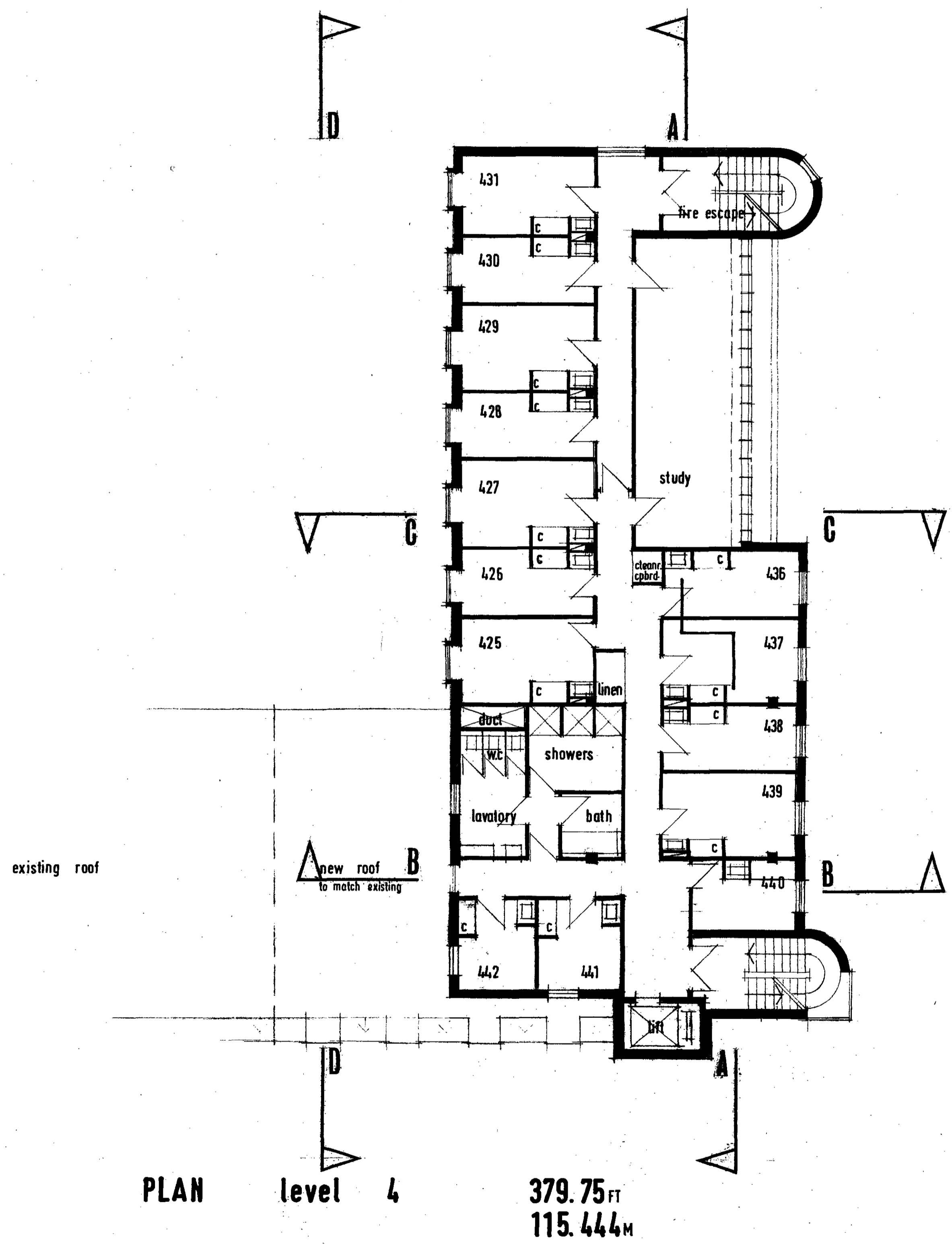
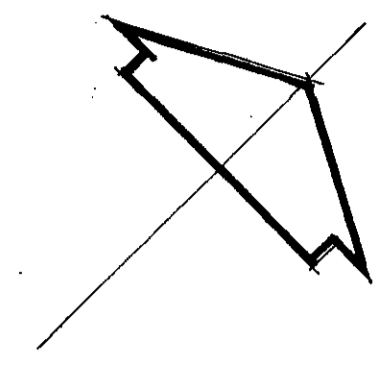
PLAN LEVEL 2&3

project	5004
scale	1:100
date	SEP 1976
drawn	A.S.K.

1A

this drawing is not to be scaled.  
all dimensions to be checked on site.

22567 (R1)  
(S)



PLAN level 4

379.75 FT  
115.444 M

LONDON BOROUGH OF CAMDEN  
TOWN AND COUNTRY PLANNING ACTS  
26 OCT 1976  
PLANS APPROVED  
ON BEHALF OF THE COUNCIL

E6/26/5/22567(R1)

GERALD  
SHENSTONE  
AND  
PARTNERS ARCHITECTS

26 BLOOMSBURY SQUARE WC1A 2PN  
01 636 8595

HYELM HOSTEL PHASE 2  
79 Fitzjohns Avenue NW3

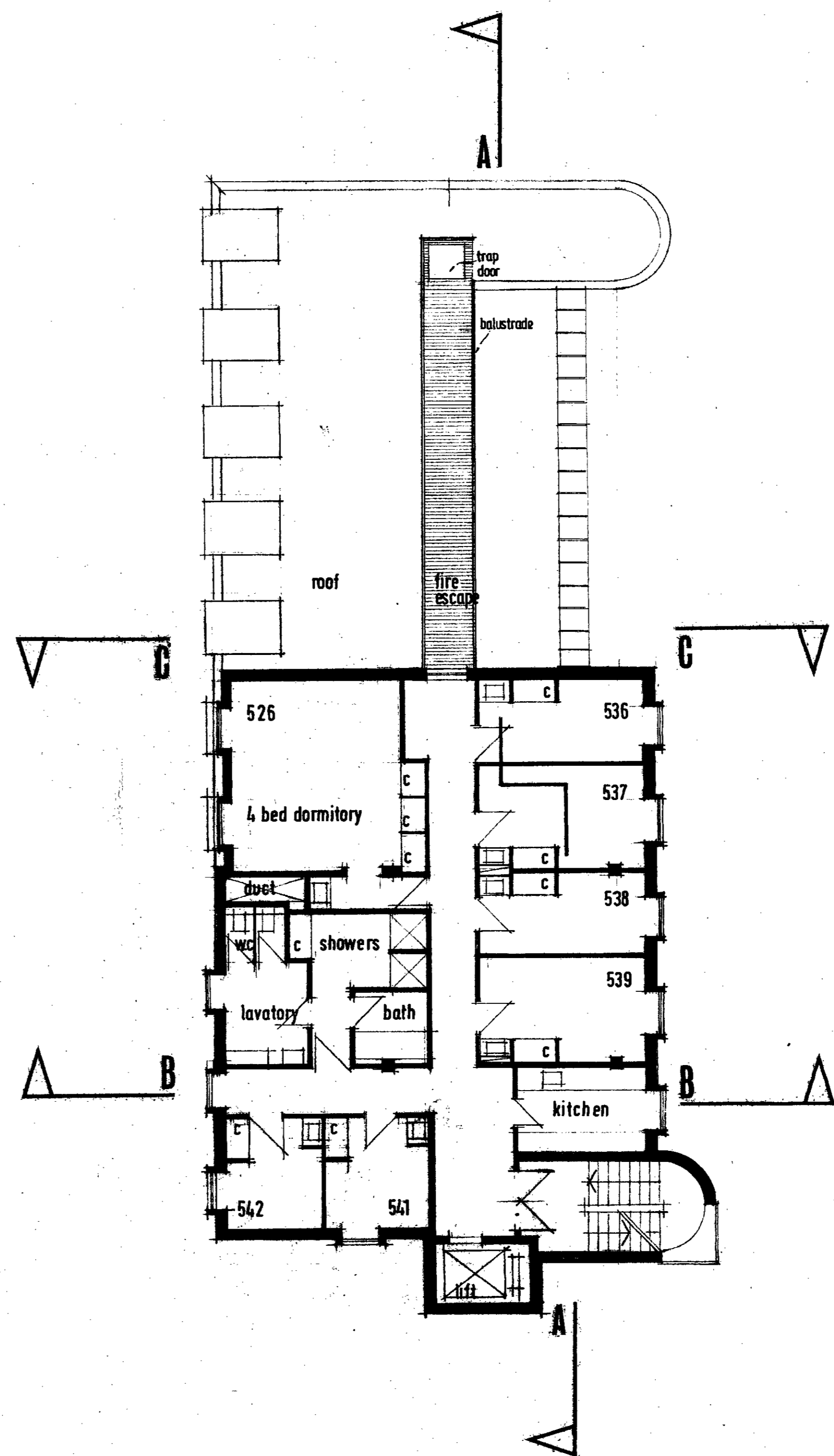
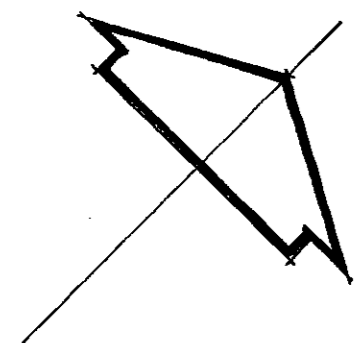
PLAN LEVEL 4

project	5004	<b>5A</b>
scale	1:100	
date	SEP 1976	
drawn	A.S.K.	

4

this drawing is not to be scaled.  
all dimensions to be checked on site.

22567 (R)  
(6)



PLAN level 5 388.25 FT  
118.02 M

5

LONDON BOROUGH OF CAMBURY  
TOWN AND COUNTRY PLANNING ACTS  
26 OCT 1976  
PLANS APPROVED  
ON BEHALF OF THE COUNCIL

E6/26/5/22567(R1)

GERALD  
SHEMSTONE  
AND  
PARTNERS ARCHITECTS

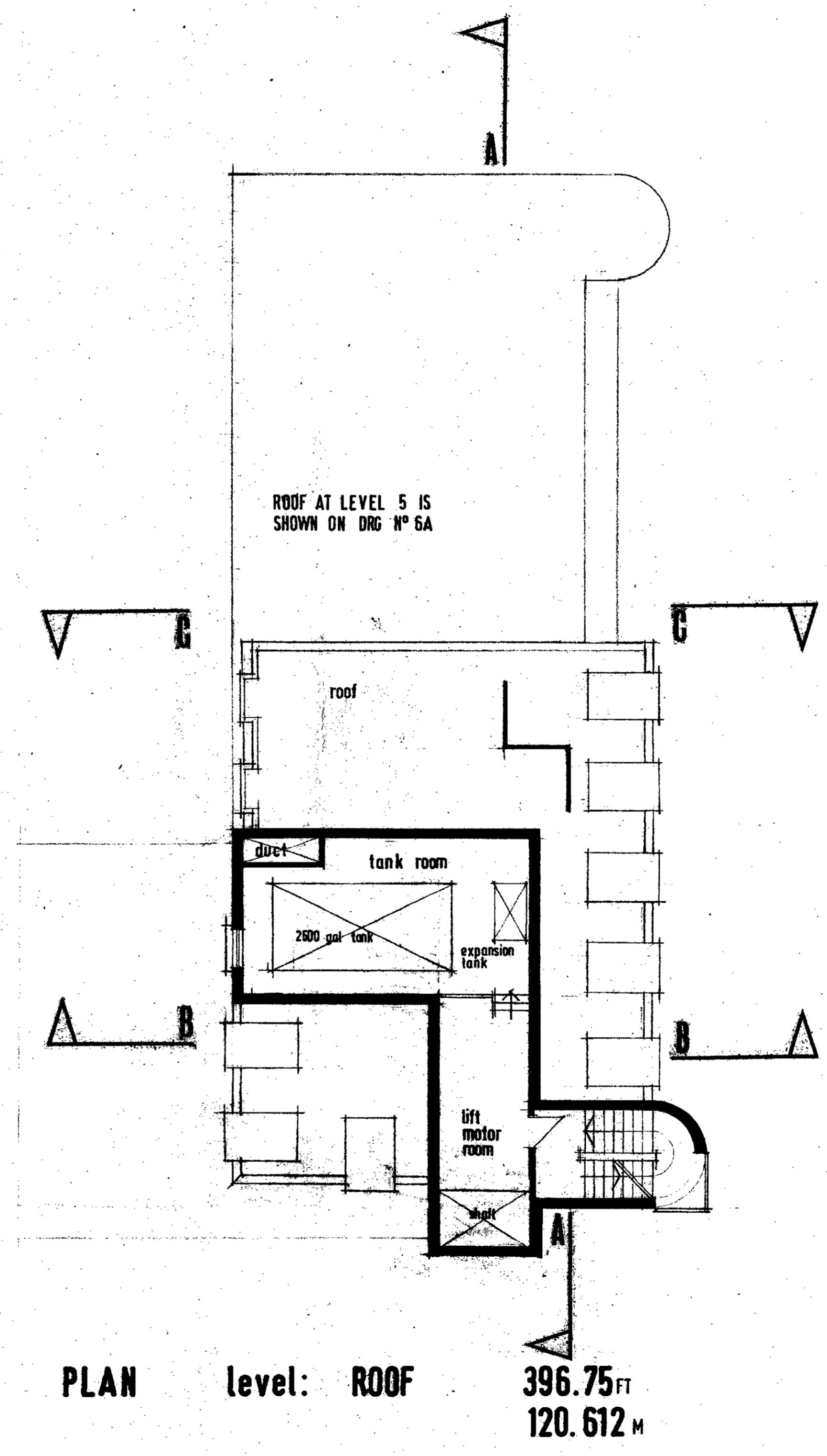
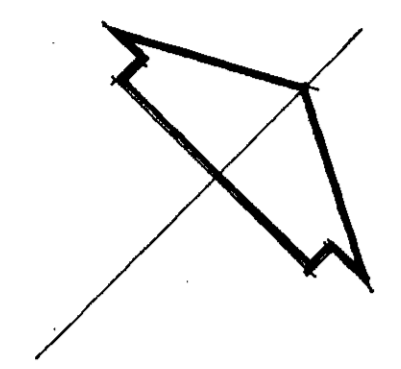
26 BLOOMSBURY SQUARE WC1A 2PN  
01 638 8595

HYELM HOSTEL PHASE 2  
79 Fitzjohns Avenue NW3

PLAN LEVEL 5

project	5004
scale	1:100
date	SEP 1976
drawn	ASK.

6A



this drawing is not to be scaled.  
all dimensions to be checked on site.

22567 (R)  
(7)

LONDON BOROUGH OF CAMDEN  
TOWN AND COUNTRY PLANNING ACTS  
26 OCT 1976  
APPROVED  
PLANS NOT APPROVED  
ON BEHALF OF THE COUNCIL

E0/26/5/22567 (R)

GERALD  
SHENSTONE  
AND  
PARTNERS ARCHITECTS

26 BLOOMSBURY SQUARE WC1A 2PN  
01 636 8595

HYELM HOSTEL PHASE 2  
79 Fitzjohns Avenue NW3

PLAN LEVEL: ROOF

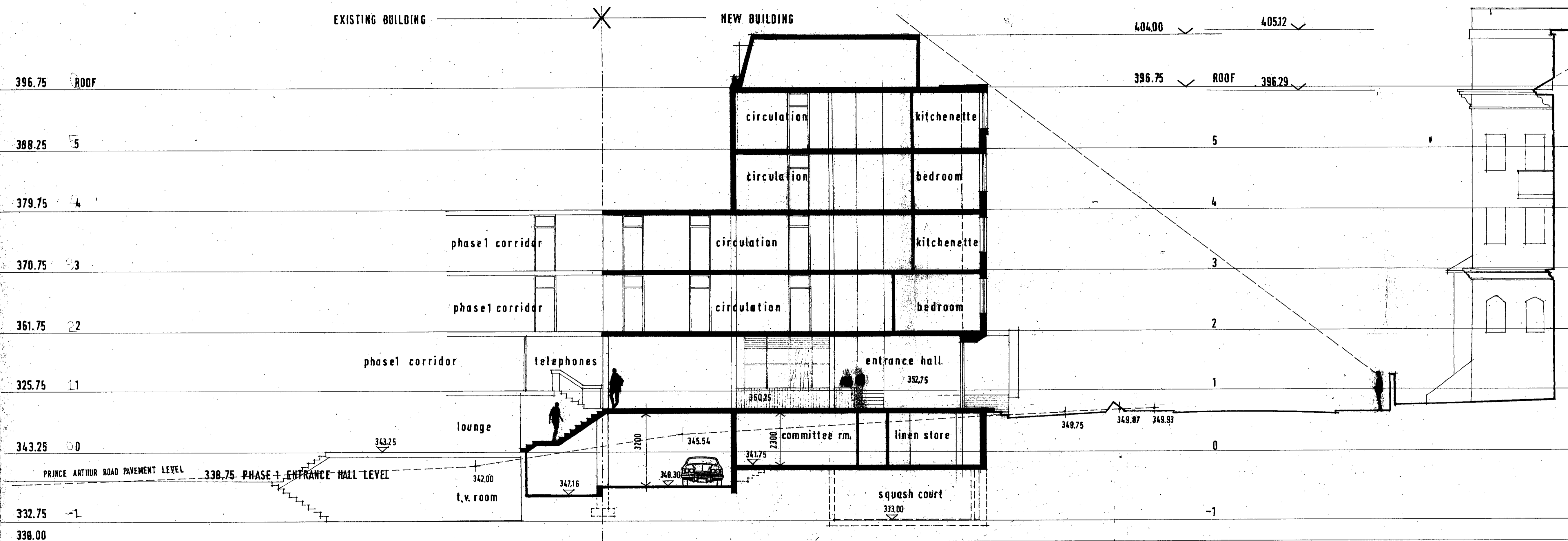
project	5004	7A
scale	1:100	
date	SEP 1976	
drawn	A.S.K. ✓	

roof



this drawing is not to be scaled.  
all dimensions to be checked on site.

22567 (R)  
(8)



cross section B-B

LONDON BOROUGH OF CAMDEN  
TOWN AND COUNTRY PLANNING ACTS  
26 OCT 1976  
APPROVED  
NOT APPROVED  
ON BEHALF OF THE COUNCIL

E0/26/5/22567 (R)

GERALD  
SHENSTONE  
AND  
PARTNERS ARCHITECTS

28 BLOOMSBURY SQUARE WC1A 2PN  
01 636 8595

HYELM HOSTEL PHASE 2  
79 Fitzjohns Avenue NW3

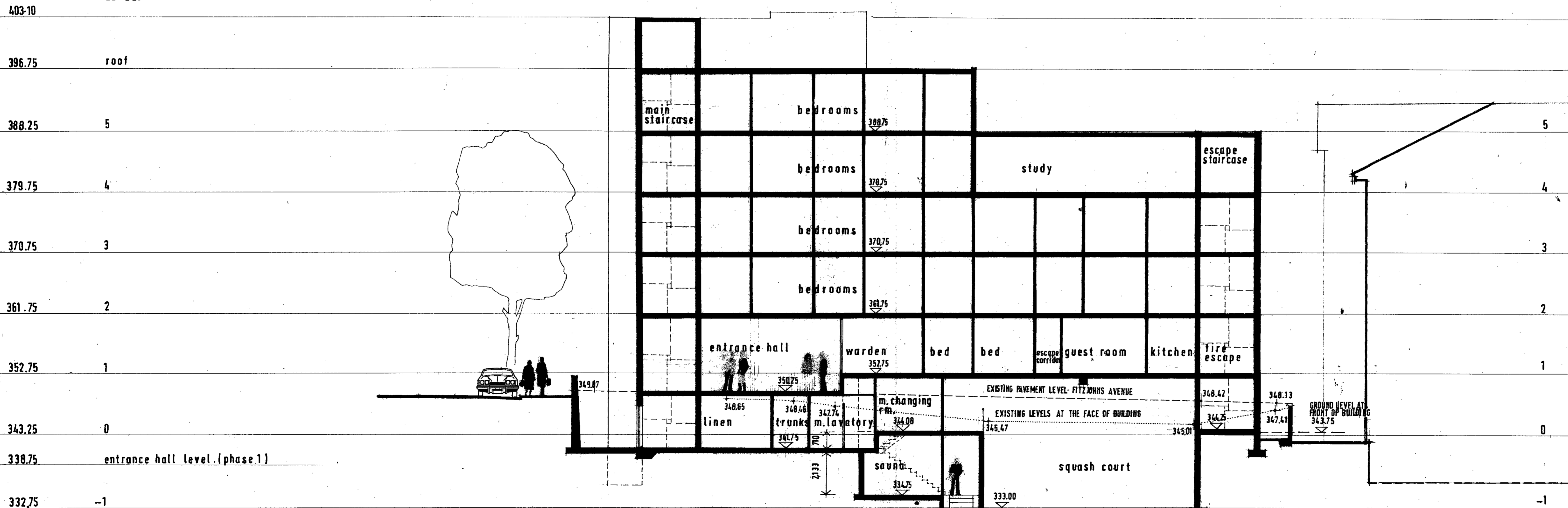
SECTION B-B

project	5044	<b>BA</b>
scale	1:100	
date	SEPTEMBER 1976	
drawn	J.R.T.	

this drawing is not to be scaled.  
all dimensions to be checked on site.

22567 (R)  
(9)

LEVELS



longitudinal section A.A

LONDON BOROUGH OF CAMDEN  
TOWN AND COUNTRY PLANNING ACTS  
26 OCT 1976  
PLANS APPROVED  
ON BEHALF OF THE COUNCIL

20/26/5/22567 (R1)

GERALD SHENSTONE AND PARTNERS ARCHITECTS

28 BLOOMSBURY SQUARE WC1A 2PN  
01 636 8595

HYELM HOSTEL PHASE 2  
79 Fitzjohns Avenue NW3

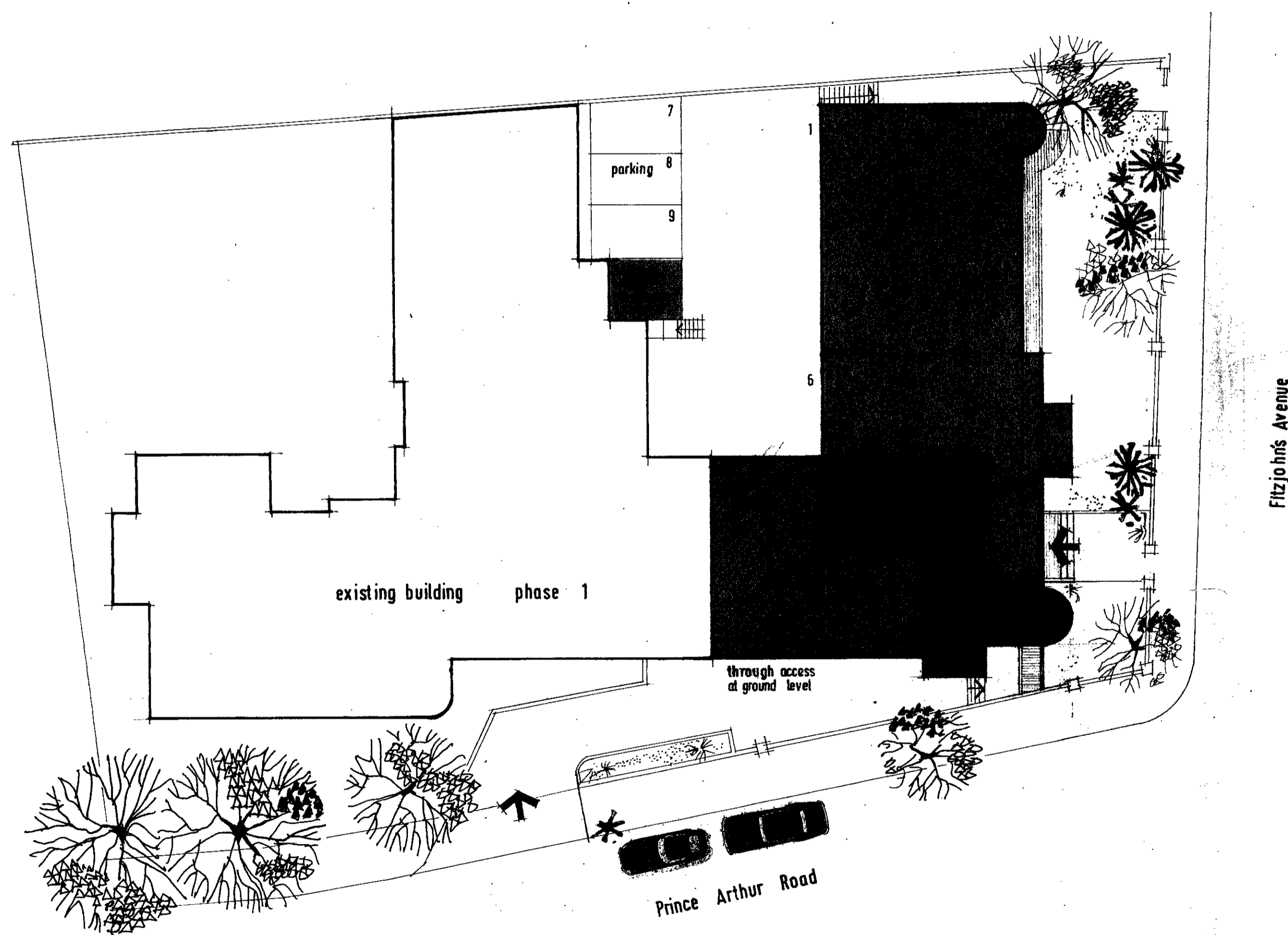
SECTION A A

project	5004
scale	1:100
date	SEPTEMBER 1976
drawn	JNT

9A

this drawing is not to be scaled.  
all dimensions to be checked on site.

22567(10)  
(10)



LONDON BOROUGH OF CAMDEN  
TOWN AND COUNTRY PLANNING ACT  
26 OCT 1976  
APPROVED  
PLANS NOT APPROVED  
ON BEHALF OF THE COUNCIL

E0/26/5/22567 (R1)

GERALD  
SHENSTONE  
AND  
PARTNERS ARCHITECTS

26 BLOOMSBURY SQUARE WC1A 2PN  
01 638 8595

HYELM HOSTEL PHASE 2  
79 Fitzjohns Avenue NW3

BLOCK PLAN

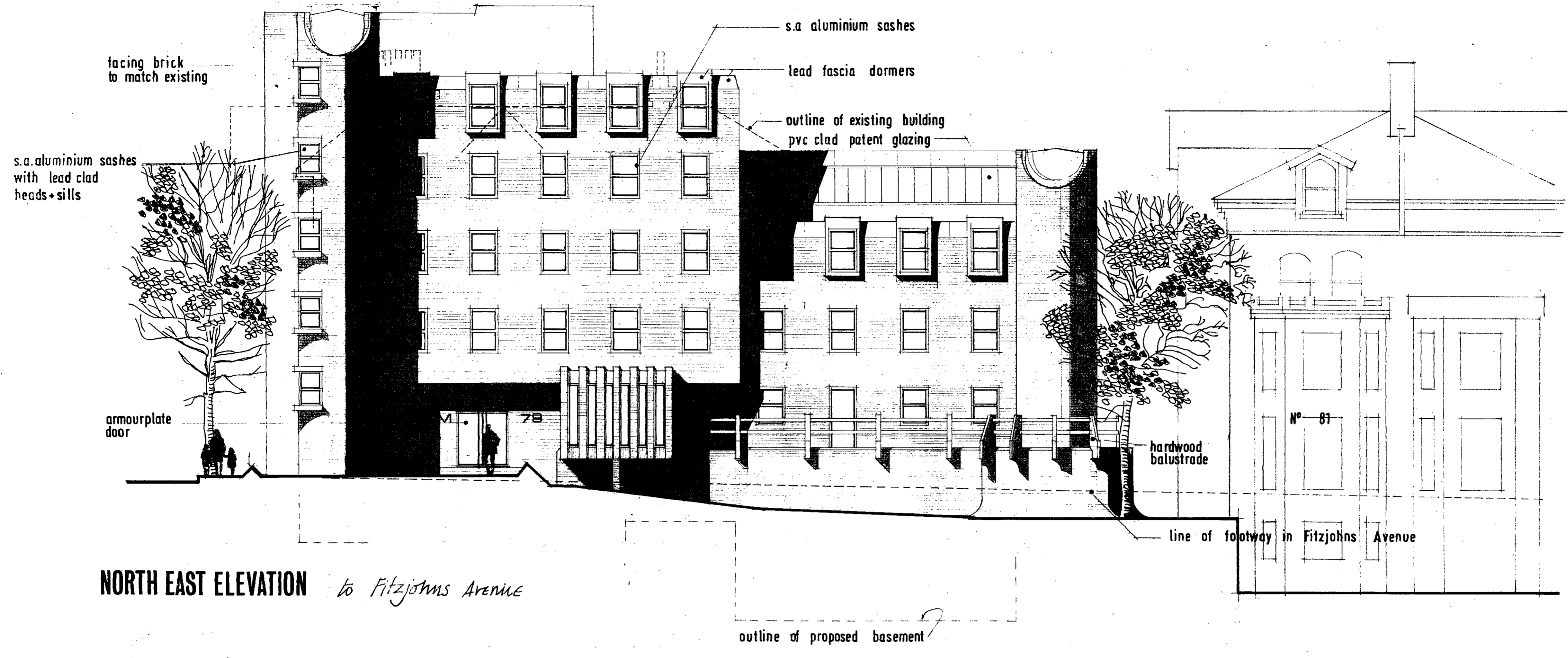
project	5004
scale	1:200
date	SEP 1976
drawn	ASK

10A

this drawing is not to be scaled.  
all dimensions to be checked on site.

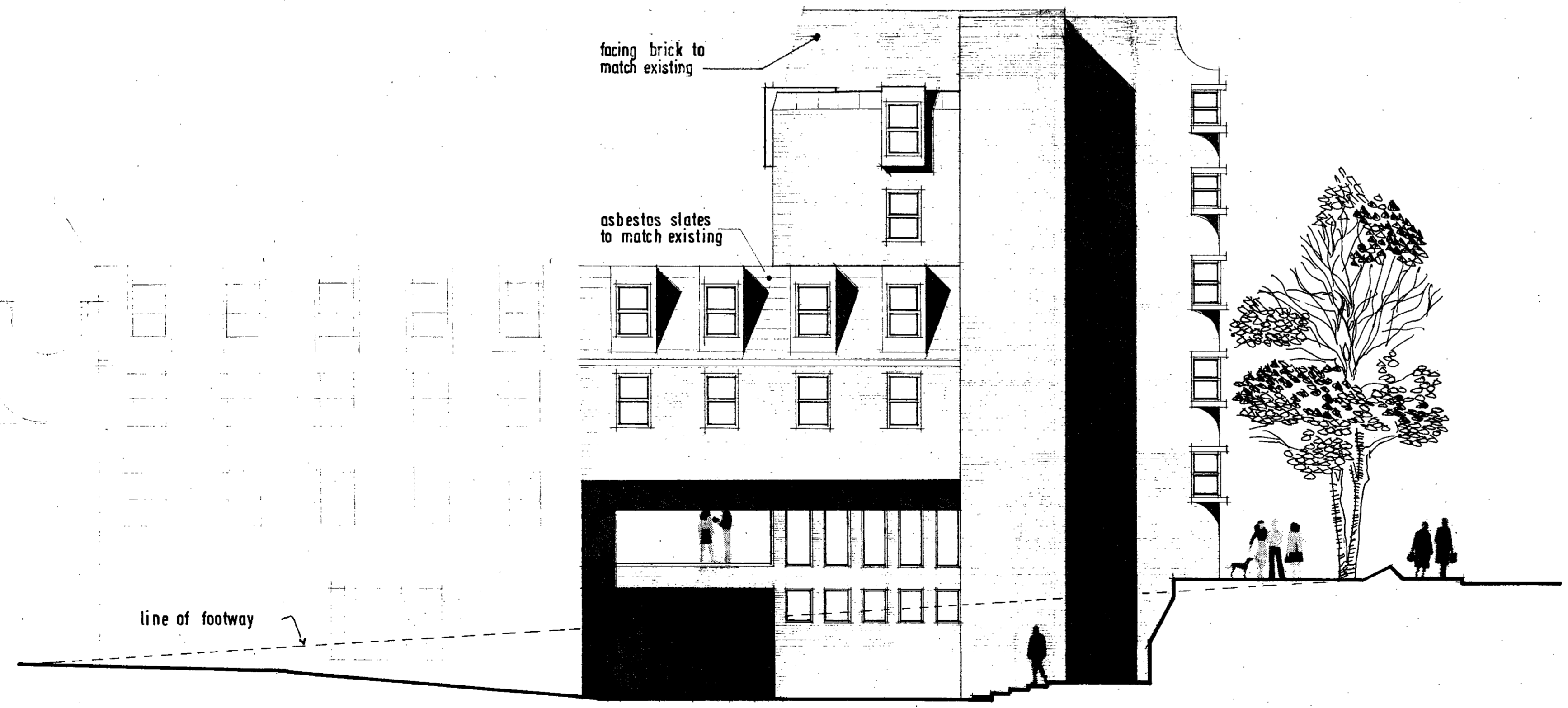
22567(w)  
(1)

403.10  
386.75 6  
5  
4  
3  
2  
352.75 1  
341.75 0  
-1  
330.00  
  
403.10  
6  
5  
4  
3  
2  
352.75 1  
0  
-1  
330.00



**NORTH EAST ELEVATION** to Fitzjohns Avenue

existing building      \*      new building [ phase 2 ]      →



**SOUTH EAST ELEVATION** to Prince Arthur Road

LONDON BOROUGH OF CAMDEN  
TOWN AND COUNTRY PLANNING ACT  
26 OCT 1976  
PLANS APPROVED  
ON BEHALF OF THE COUNCIL

B0/26/5/22567(R1)

**GERALD SHENSTONE AND PARTNERS**  
ARCHITECTS

26 BLOOMSBURY SQUARE WC1A 2PN  
01 636 8595

**HYELM HOSTEL PHASE 2**  
79 Fitzjohns Avenue NW3

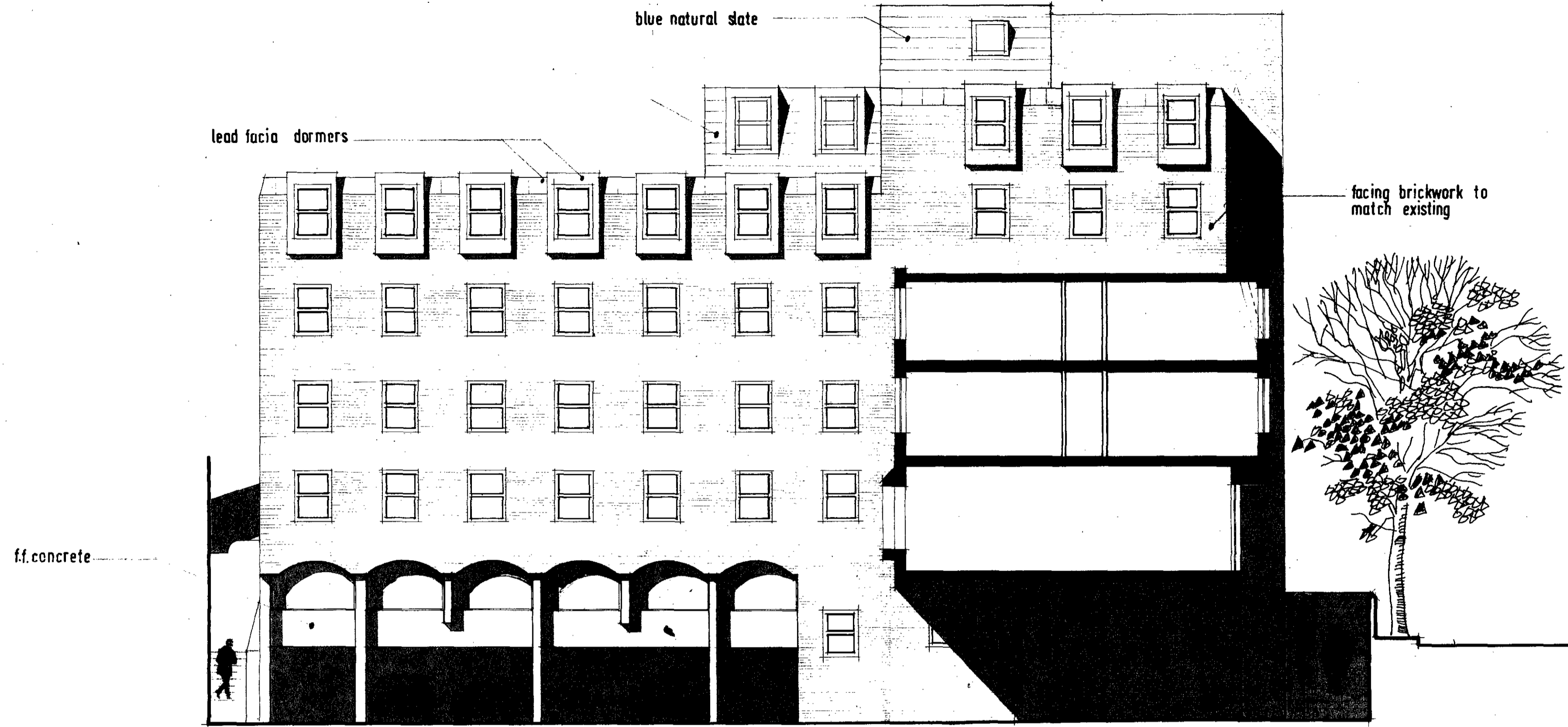
**ELEVATIONS**

project	5004
scale	1:100
date	SEP 1976
drawn	A.S.K.

**11A**

this drawing is not to be scaled.  
all dimensions to be checked on site.

22567 (R)  
(12)



SECTION D-D

403.10  
386.75 6  
5  
4  
3  
2  
352.75 1  
341.75 0  
-1  
330.00

LONDON BOROUGH OF CAMDEN  
TOWN AND COUNTRY PLANNING ACTS  
26 OCT 1976  
APPROVED  
PLANS FOR CONSTRUCTION  
ON BEHALF OF THE COUNCIL

E0/26/5/22567 (R1)

GERALD  
SHENSTONE  
AND  
PARTNERS ARCHITECTS

26 BLOOMSBURY SQUARE WC1A 2PN  
01 636 8595

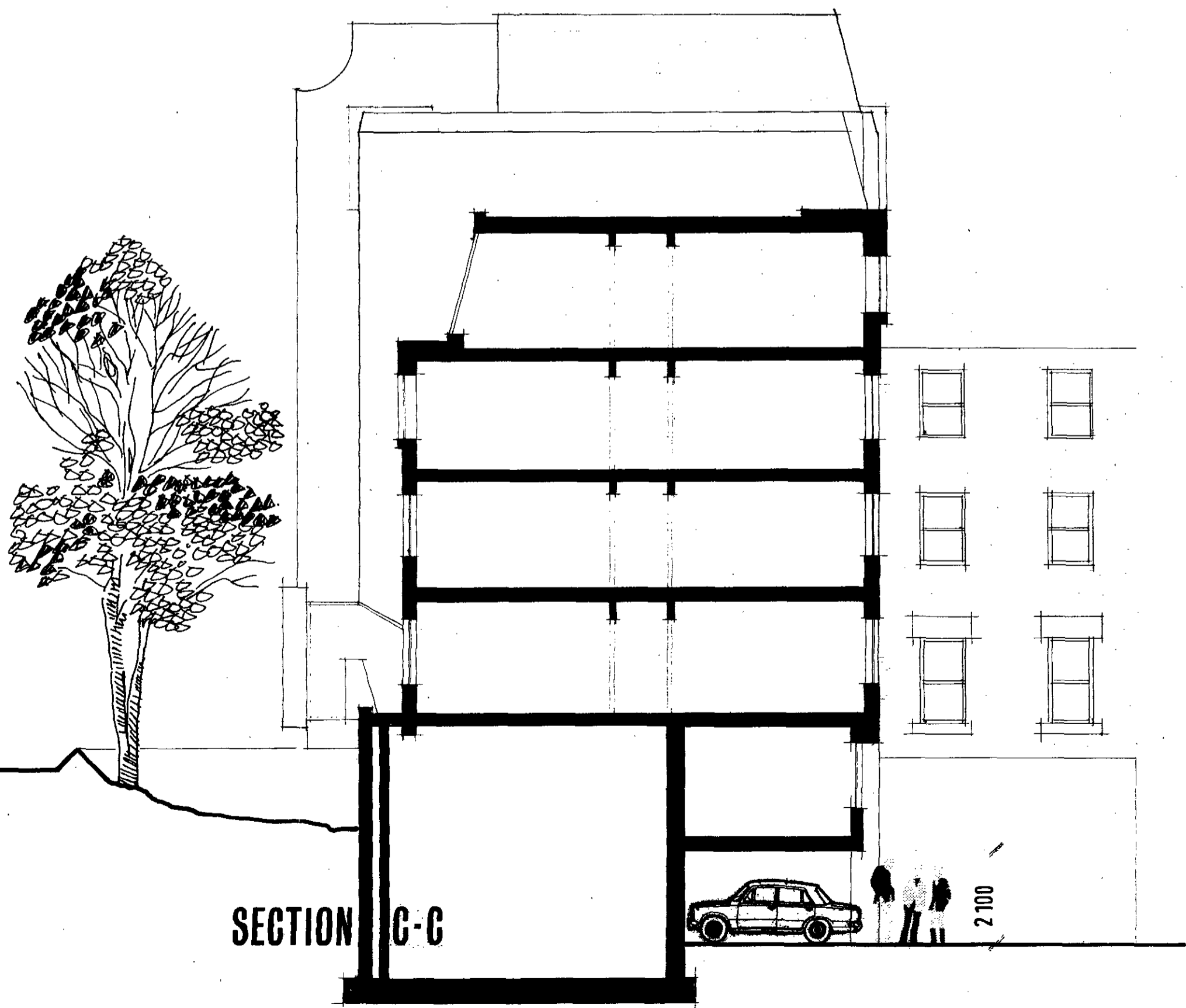
HYELM HOSTEL PHASE 2  
79 Fitzjohns Avenue NW3

ELEVATIONS SECTIONS

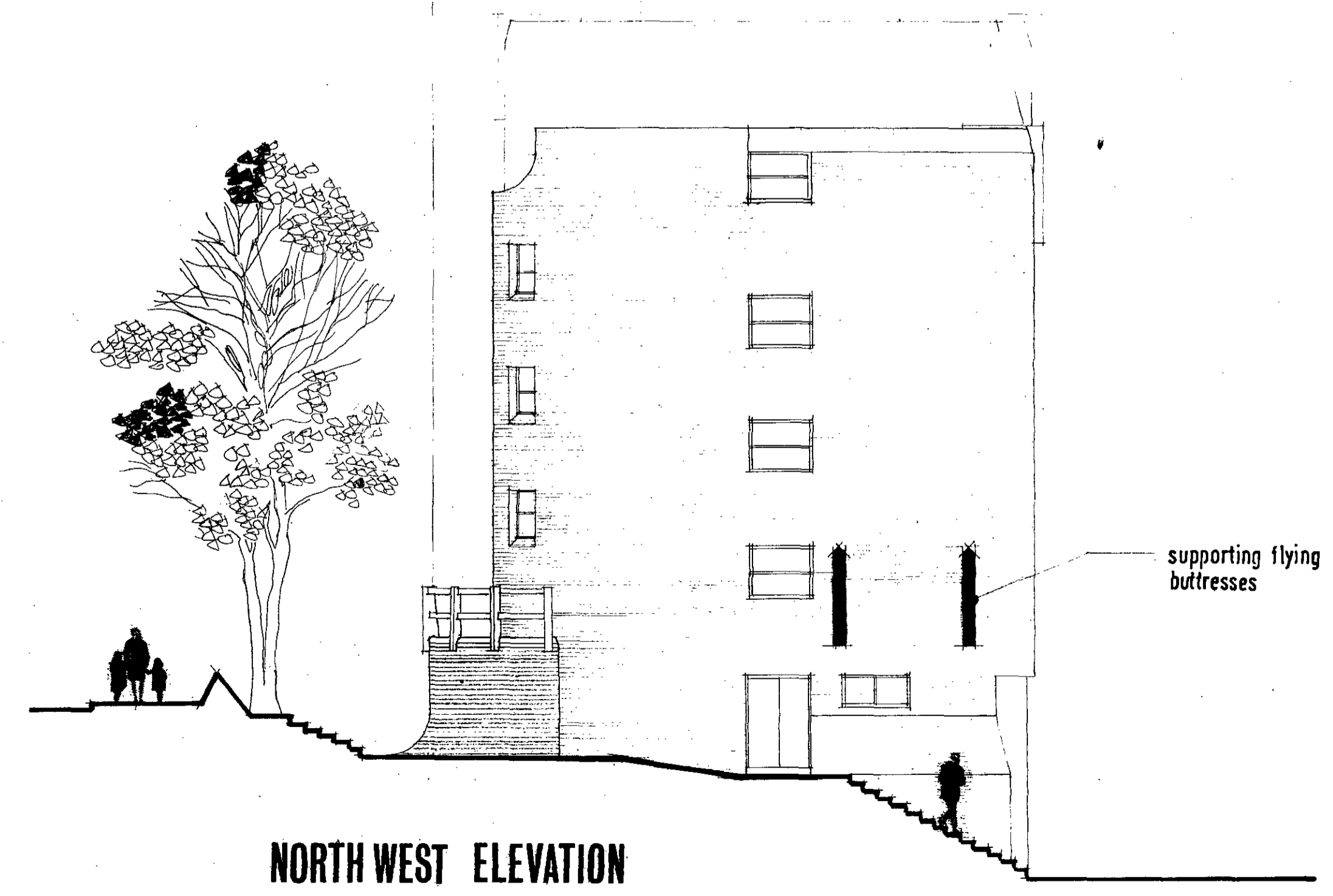
project	5004
scale	1:700
date	SEPT. 1976
drawn	ASK

12A

403.10  
386.75 6  
5  
4  
3  
2  
352.75 1  
341.75 0  
-1  
330.00



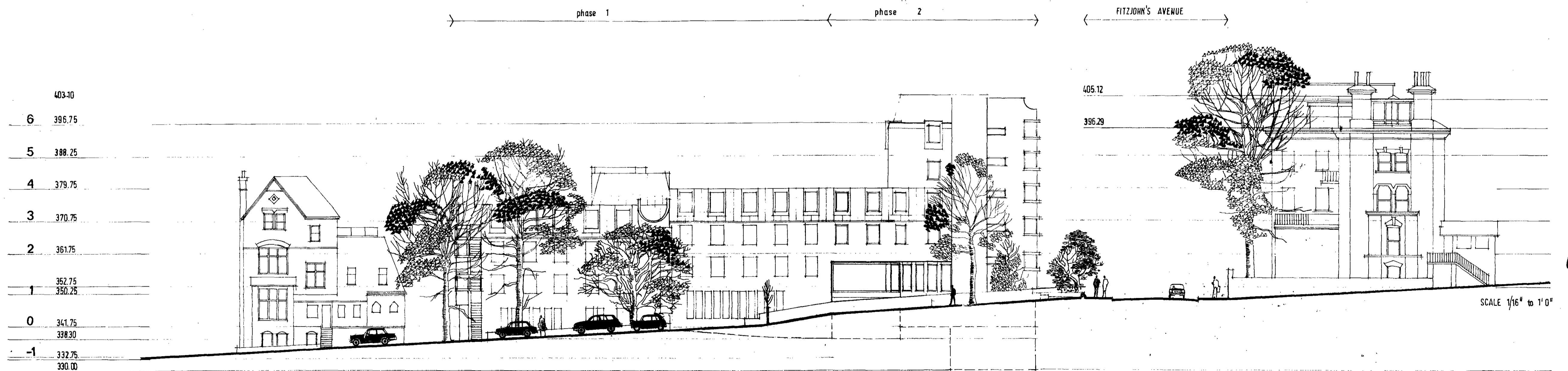
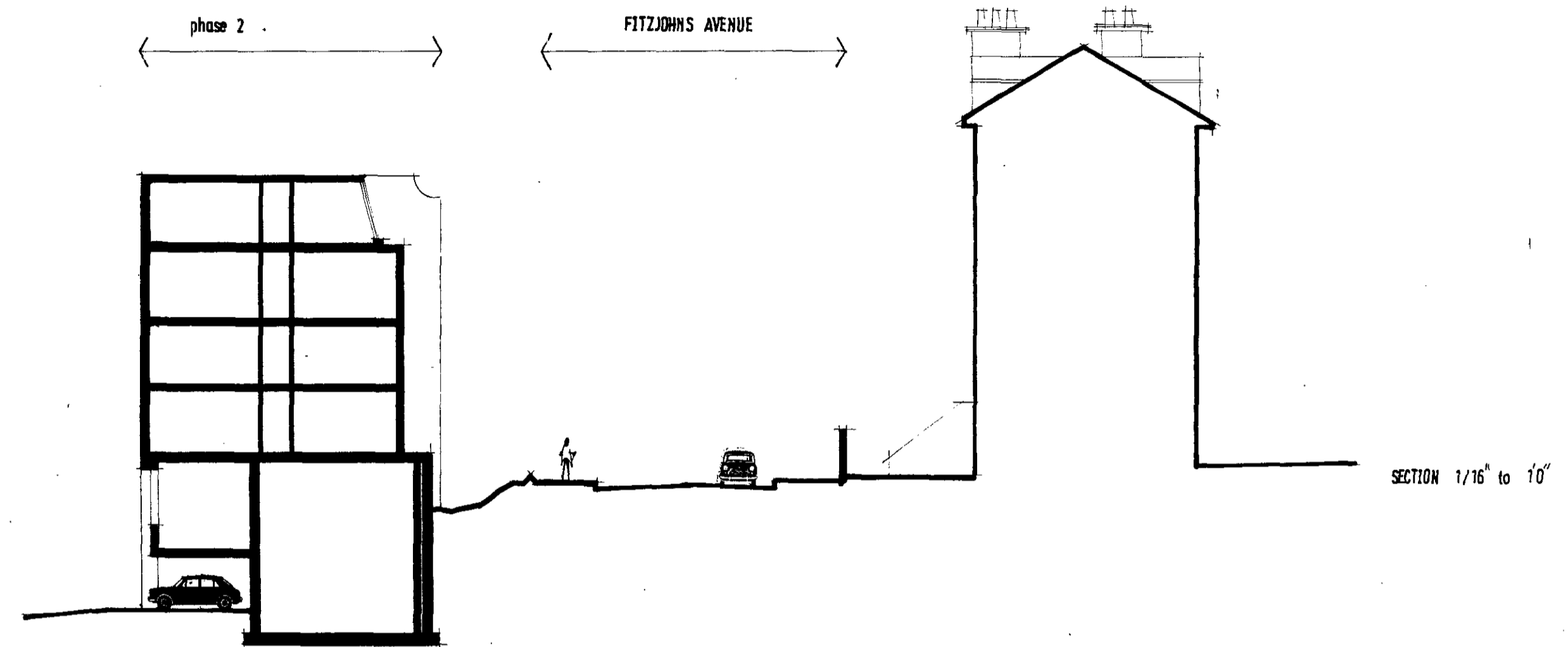
SECTION C-C



NORTH WEST ELEVATION

supporting flying  
buttresses

22567 (1)  
(13)



LONDON BOROUGH OF CAMDEN  
TOWN AND COUNTRY PLANNING ACTS  
26 OCT 1976  
PLANS APPROVED  
ON BEHALF OF THE COUNCIL

E6/26/5/  
22567(1)

**HYELM HOSTEL PHASE TWO**  
79, FITZJOHN'S AVENUE LONDON NW 3  
SEPTEMBER 1976  
ARCHITECTS: GERALD SHENSTONE AND PARTNERS 26, BLOOMSBURY SQUARE LONDON WC 1