

The Coworking
Management
Company Ltd
The Interchange

Service Installation

The provisioning of an antenna installation at The Interchange Building, Oval Road, London, NW1 7DE.

Scope

Optimity Ltd will be installing 2 antennas on the roof of Interchange Building, Oval Road, London, NW1 7DE and installing 2 cat6 cables from the roof to the communications area.

Start Location
(A End)

The roof of:
Interchange Building
Oval Road
London
NW1 7DE

End Location
(B End)

Roof Level Communications cabinet:
Interchange Building
Oval Road
London
NW1 7DE



Equipment

The cable between the A End and B End will have the following specification:

- Shielded External Category 6e LSOH Cable
- Low Smoke Zero Halogen IEC332-1
- Nominal Overall Diameter 5.2mm
- Conductor 24AWG Solid Copper x 8
- Conductor Insulation of Polyethylene
- Tested to ISO 11801, EN 50173 and TNSI/TIA-688-C

The following equipment will also be used:

- 2 x Siklu antenna
- 2 meter antenna mast
- 2 x wall brackets
- M8 Screws
- Hand drill
- Washers
- Raw plugs
- Jubilee clips
- Plastic cable ties for cable restraint in a horizontal plane
- Plastic Cable clips to hold the cable down

Route

The cables will take the following route from the roof to reach the communications room:

- From the pole mounted antenna
- Tacked along the roof
- Through the wall via an existing entry point
- Into a sheltered room at roof level
- Tacked to the interior wall
- To a communications cabinet



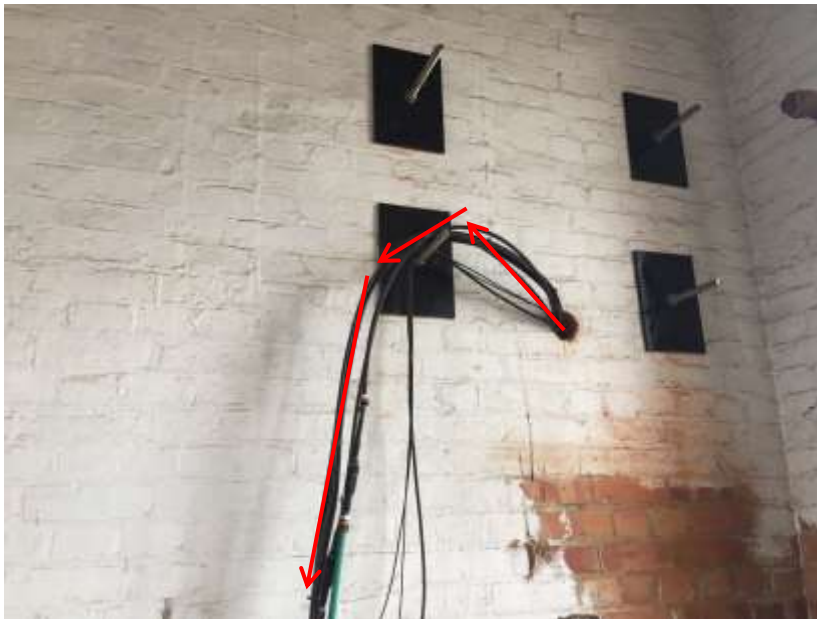
Photographs

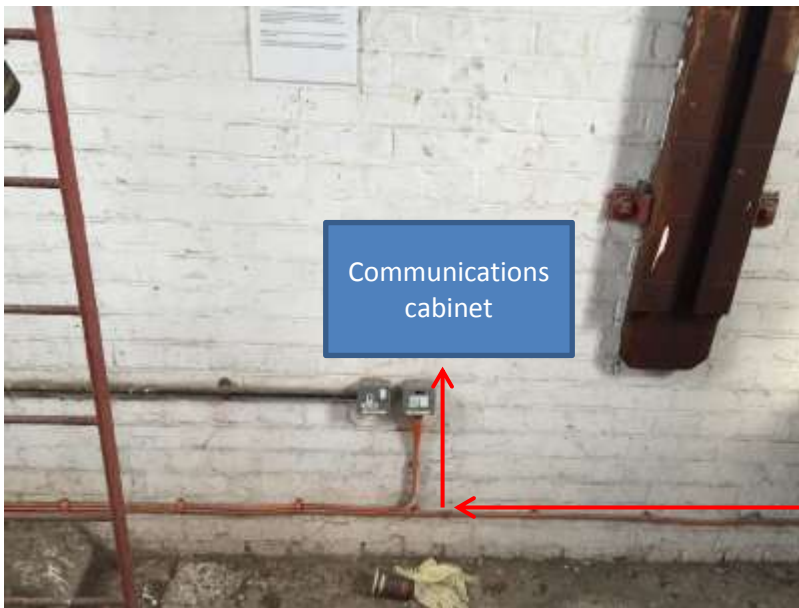
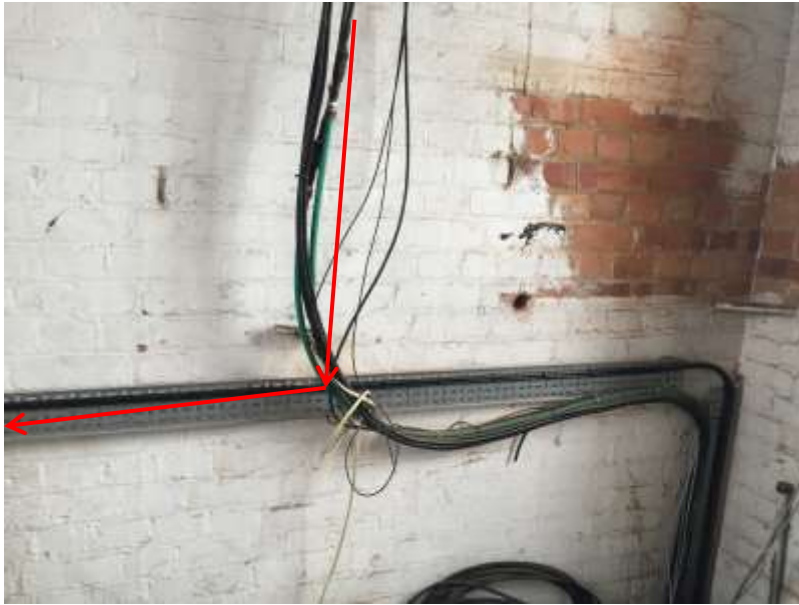
The proposed antenna location is marked with a yellow rectangle



The following photographs show the cable route to the communications area







Antenna Specifications:

Make/model - Siklu Antenna EH1200

Diameter - 31 cm

Depth - 13 cm

Weight - 3.5 kg

Front View



Rear View



Communication Cabinet



Specification (9u cabinet)

600mm deep
600mm wide
501mm high
Can come in grey or black
Wall-mountable



- Lockable, quick release side panels, for maximum access into cabinet



- Cable entry cut out in top and base



- Angled vented roof



- Adjustable 19" mounting profiles



Contacts

Andrew Doxsey

T: 020 7749 1006

E: adoxsey@optimity.co.uk

Chris Chave-Cox

T: 020 7749 1031

E: cchave-cox@optimity.co.uk

