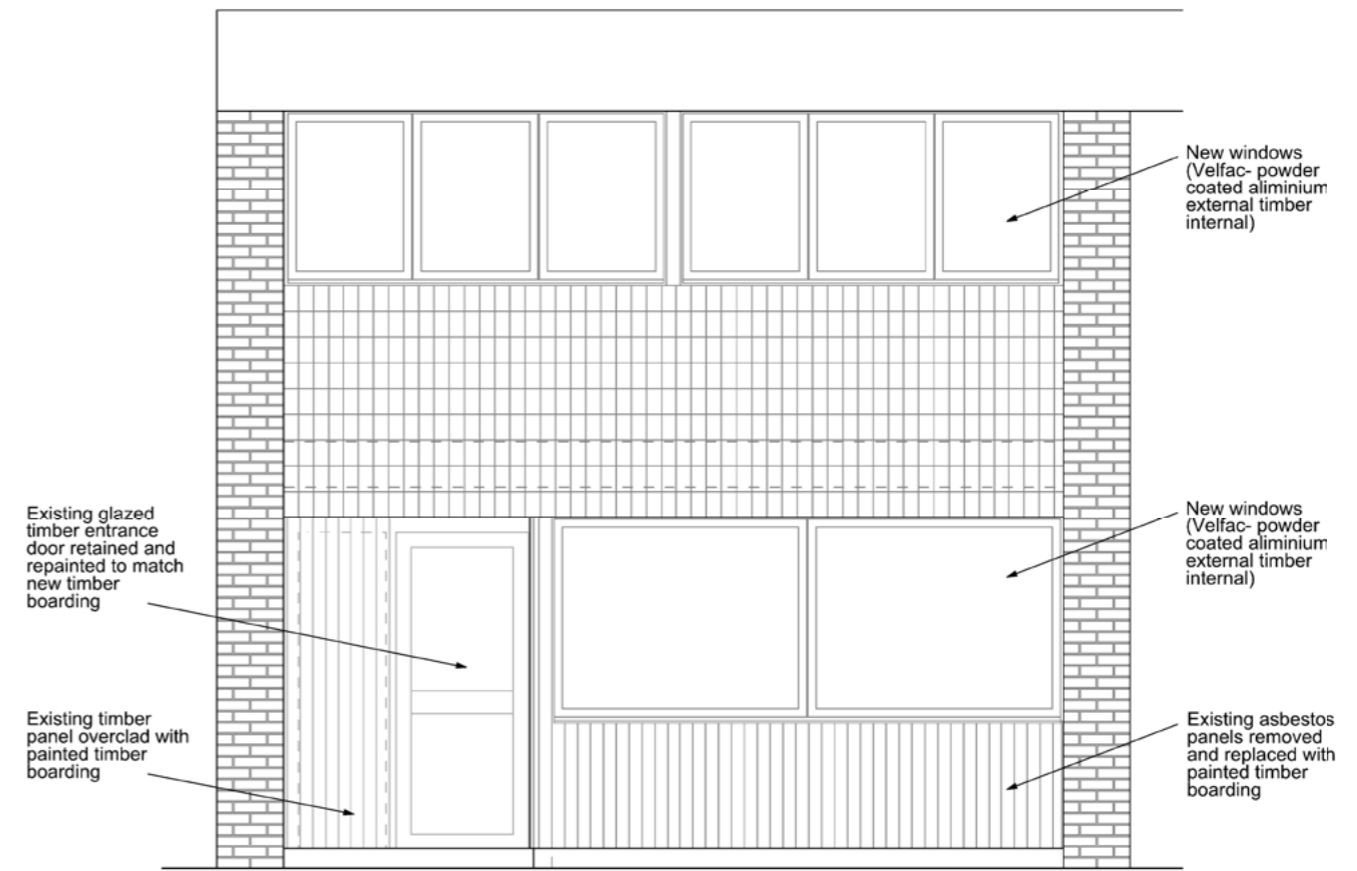


EXISTING FRONT ELEVATION

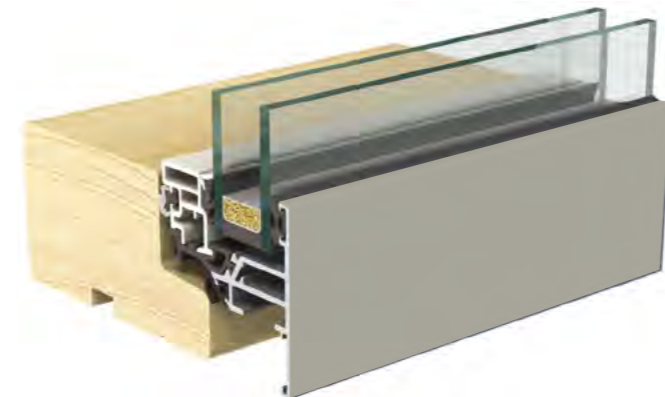


PROPOSED FRONT ELEVATION



The existing timber pivot windows are single glazed, and include vents which does not close. They are generally in a very poor state, having not been maintained regularly by the previous owner. The rear windows, which face south, are especially poor with rotting timber though out.

Photograph of existing front elevation

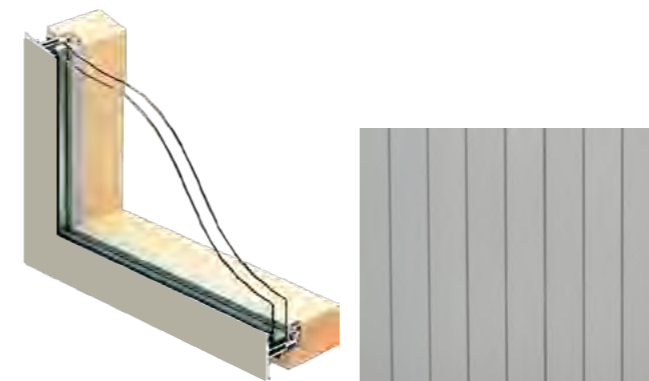


The proposed new windows are Velfac double glazed outward projecting, timber and aluminium windows, with a similar slim proportion to the existing timber windows.

The external opening sash is made of aluminium extrusions which are polyester powder-coated, according to GSB approved quality. The proposed colour is RAL 7032. The internal frame is painted timber.

The aluminium sash is a highly durable surface and should never need repainting, only cleaning a few times a year, or as needed.

The proposed timber boarding below the ground floor windows will be 75 mm wide hardwood boards, stained with a light grey timber stain.



Proposal for window and asbestos panel replacement for 1 Ravenswood, Glenhurst Avenue, London NW5 1PU
Extg and Proposed Front Elevations. Scale 1:50 @ A3

Drawing 002 Rev - Date: 11/02/2016