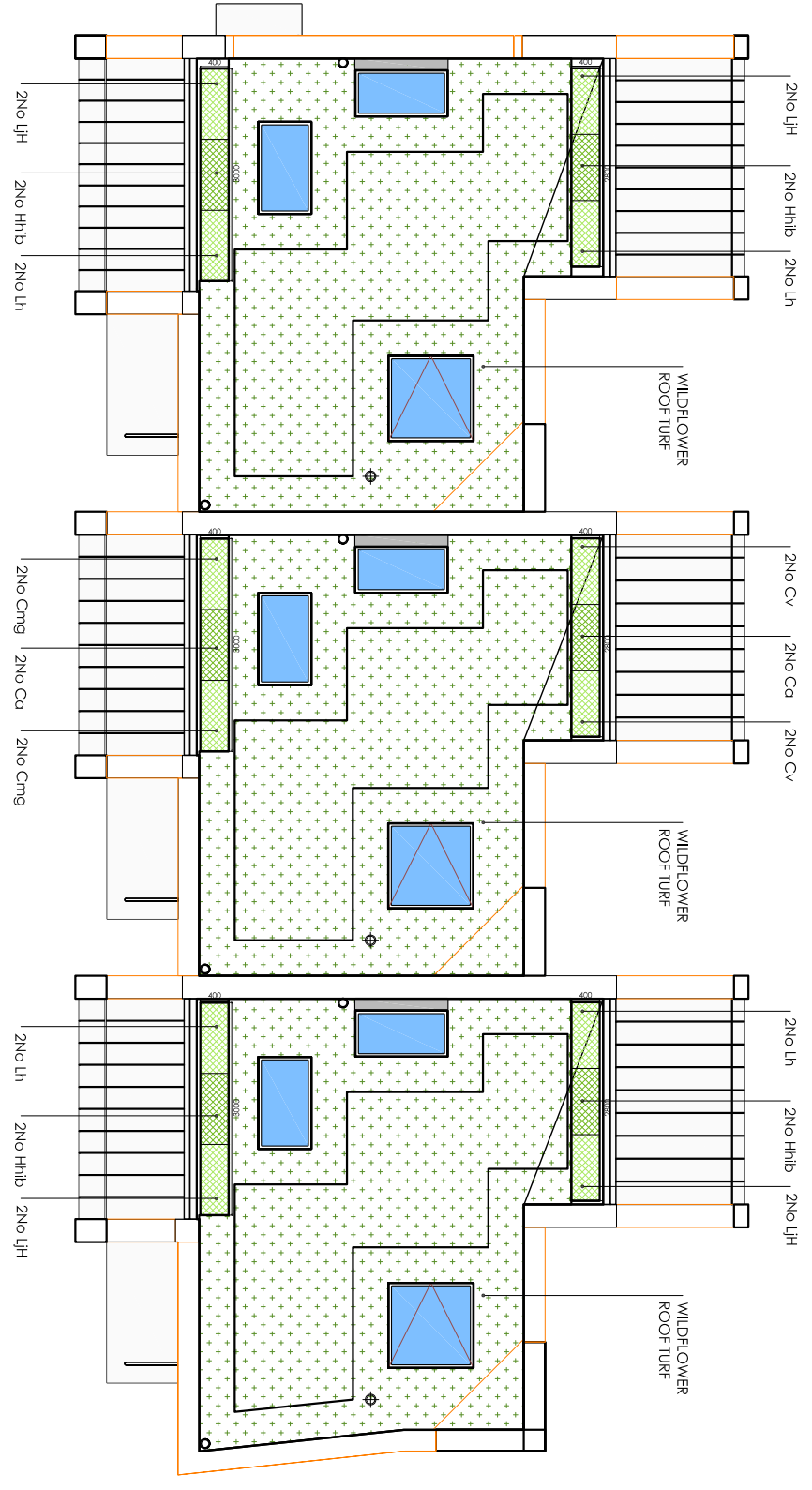


PLANTING PLAN



KEY

- WILDFLOWER ROOF TURF W/F-R001-34
Refer to planting schedule for specification.
- PLANTING: CLIMBERS
Refer to planting schedule for specification.

PLANTING SCHEDULE

CLIMBERS	Botanical Name	Common Name	Height cm	Root Zone	Specification	No./m	Qty
Ca	<i>Clematis armandi</i>	Armand Clematis	150-200	25L	Trellis, saw shoots, 3/5 bks	As shown	4
Cmg	<i>Clematis montana grandiflora</i>	White Anemone Clematis	150	25L	Trellis, several shoots, 5 bks	As shown	4
Cv	<i>Clematis vitalba</i>	Old Man's Beard	150-200	25L	Trellis, saw shoots, 3/5 bks	As shown	4
Hnb	<i>Hedera hibernica</i>	Iris Ivy	150-200	25L	Trellis, several shoots, 7 bks	As shown	8
Lh	<i>Lonicera henryi</i>	A Honeysuckle	150-200	25L	Trellis, saw shoots, 3/5 bks	As shown	8
LH	<i>Lonicera japonica 'Halliana'</i>	Japanese Honeysuckle 'Halliana'	150-200	25L	Trellis, several shoots, 5 bks	As shown	8

WILDFLOWER ROOF TURF W/F-R001-34	Botanical Name	Common Name	Mix	Botanical Name	Common Name
	<i>Scorzonera autumnalis</i>	Autumn Hawkbit	45% of mix	<i>Lycynis fuscicul</i>	Red Campion
	<i>Stachys officinalis</i>	Beany	45% of mix	<i>Silene dioica</i>	Red Campion
	<i>Lobelia corniculata</i>	Birdsfoot Trefoil	45% of mix	<i>Primula lanceolata</i>	Ribwort Plantain
	<i>Silene vulgaris</i>	Buddler Campion	45% of mix	<i>Sanguisorba minor</i>	Sand Burnet
	<i>Hypochaeris radicata</i>	Cas. Ear	45% of mix	<i>Pyrrhula vulgaris</i>	Sedlchael
	<i>Centaurea nigra</i>	Common Knopweed	45% of mix	<i>Viola caesia</i>	Tulard Vetch
	<i>Rumex acetosa</i>	Common Sorrel	45% of mix	<i>Daucus carota</i>	Wild Carrot
	<i>Viola sativa ssp. argentea</i>	Common Vetch	45% of mix	<i>Oligarum vulgare</i>	Wild Marjoram
	<i>Lunaria vulgaris</i>	Common Toadflax	45% of mix	<i>Tribulum pratense</i>	Wild Red Clover
	<i>Primula veris</i>	Cowslip	45% of mix	<i>Silene latifolia</i>	White Campion
	<i>Kranke arvensis</i>	Fred Scabious	45% of mix	<i>Adiantum millebulbum</i>	Yarrow
	<i>Leonodon hispidus</i>	Greater Hawkbit	45% of mix	<i>Madicago lupulina</i>	Black Madick
	<i>Gallium verum</i>	Lady's Bedstraw	45% of mix	<i>Campanula glomerata</i>	Cloistered Bellflower
	<i>Ranunculus acris</i>	Meadow Buttercup	45% of mix	<i>Primula media</i>	Heary Primula
	<i>Geranium pratense</i>	Meadow Carneshill	45% of mix	<i>Leonodon hispidus</i>	Rough Hawkbit
	<i>Filipendula ulmaria</i>	Meadowsweet	45% of mix	<i>Scabiosa columbiana</i>	Small Scabious
	<i>Malva moschata</i>	Black Malva	45% of mix	<i>Echium vulgare</i>	Viper's Bugloss
	<i>Leucanthemum vulgare</i>	Os-Eye Daisy	45% of mix	<i>Viola incolor</i>	Wild Pansy
	<i>Hypocissium perforatum</i>	Pinkish St-Johns Wort	45% of mix	<i>Amorpha maritima</i>	Thrift

PLANTING NOTES

- Plant material to conform to the National Plant Specification. All plant stock to originate within the UK and plant provenance notes to be retained for verification on request. Plant handling and planting operations to be in accordance with Horticultural Trade Association Good Practice. No plants to be left out of pots for longer than 5 minutes. All bare root stock to be heeled in or kept in wind proof root protection until needed for planting.
- Imported topsoil to be BS 3882:2015 Topsoil, from an approved source, and to accord with the above specification. Grade: Within the parameters of sandy loam textural class.
Imported topsoil to be free from:
 - Injurious or pernicious weeds, e.g. common ragwort, spear thistle, Japanese knotweed, fat hen, couch grass, bindweed.
 - Himalayan balsam and giant hogweed.
 - sharp, plastics and non-soil forming materials;
 - noxious animal or plant diseases;
- Any approved sample lead to be kept on site for comparison purposes.
- Soil retained on site for re-use to have following characteristics:
 - Free of pests and diseases and chemical or biological contamination.
 - Foreign matter: On visual inspection, free of fragments and roots of aggressive weeds, sticks, straw, subsoil, pieces of brick, concrete, glass, wire, large lumps of clay or vegetation, and the like.
 - Do not use topsoil contaminated with subsoil, rubbish or other deleterious materials.
 - Subsoil: In areas to receive topsoil or planting media, do not use subsoil contaminated with the above materials.
 - Give notice: If any evidence or symptoms of soil contamination are discovered on the site or in topsoil or planting media to be imported.
- Sanitized and stabilised composted materials certified to PAS 100 for planting beds.

IRRIGATION NOTES

Kärcher pot watering irrigation system to be installed to raised planters. Kärcher micro spray nozzle irrigation system to be installed to wildflower lawn. Both systems to be controlled by Kärcher ST6 Due Ecologic moisture control unit to allow for independent watering if required.



No dimensions are to be scaled from this drawing. All dimensions are to be checked on site. Area measurements for indicative purposes only. This drawing is the property of Exterior Architecture Ltd. No part of the drawing may be reproduced in any manner without permission from Exterior Architecture Ltd.

Rev Description Date

EXTERIOR ARCHITECTURE
LONDON: Studio 15, Hewlett House, Hewlock Terrace, London, SW16 4AS
MANCHESTER: Studio 537, The Royal Exchange, St Anns Square, Manchester, M2 7DH
E-Mail: office@exteriorarchitecture.com
Web: www.exteriorarchitecture.com

Project title
HAWLEY MEWS CAMDEN

Drawing title
PLANTING PLAN

Issued By Manchester
Scale 1:100 @ A3
Status PLANNING
Date 08/03/16
Drawing number EA_1617_PL_500

T: 0161 850 8101
Drawn EA
Checked SPL
Approved JM
Revision