

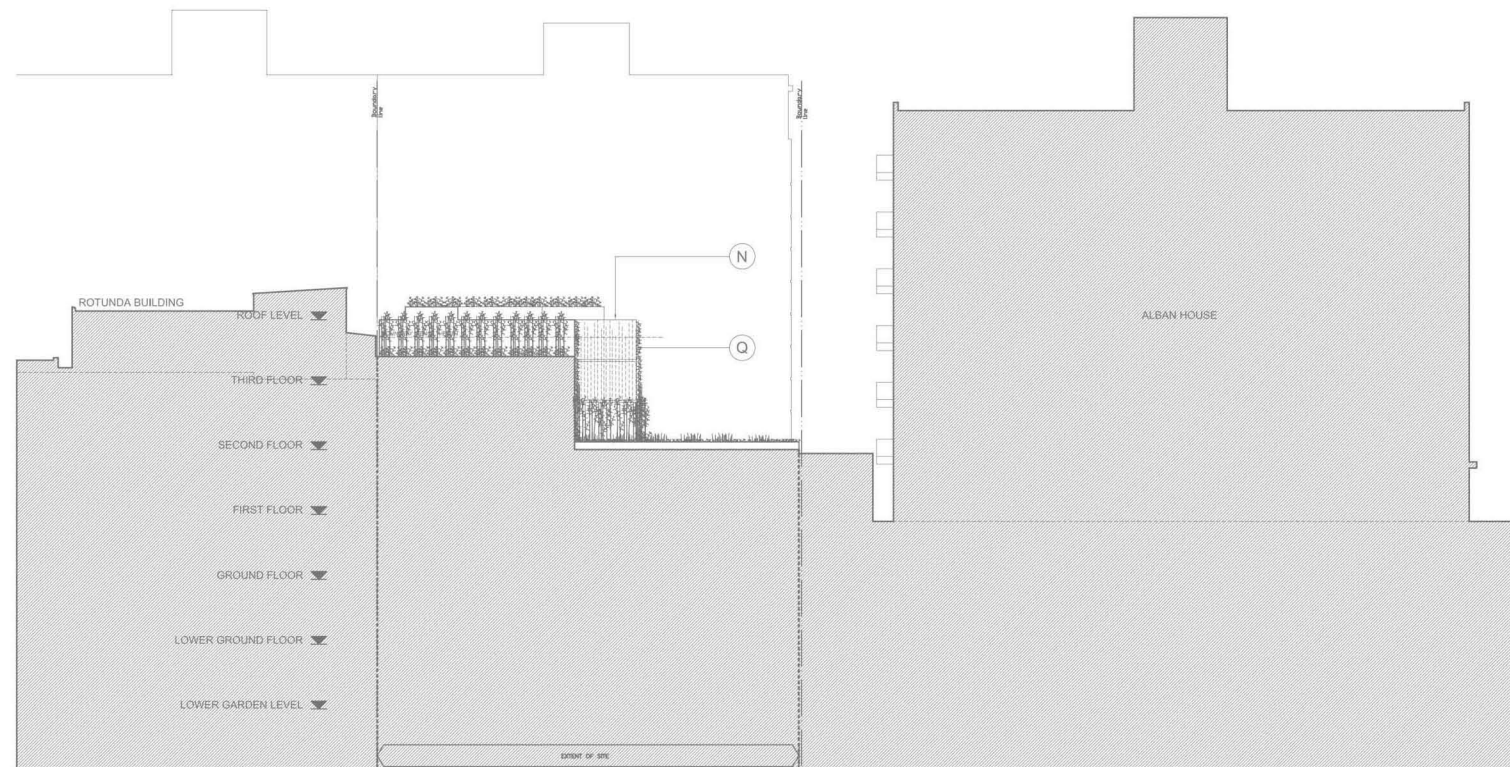
# 120 FINCHLEY ROAD - PLANNING GRANTED AND PROPOSED COMPARISON

REAR ELEVATION (EAST)

S-73

DATE - 21.01.2016

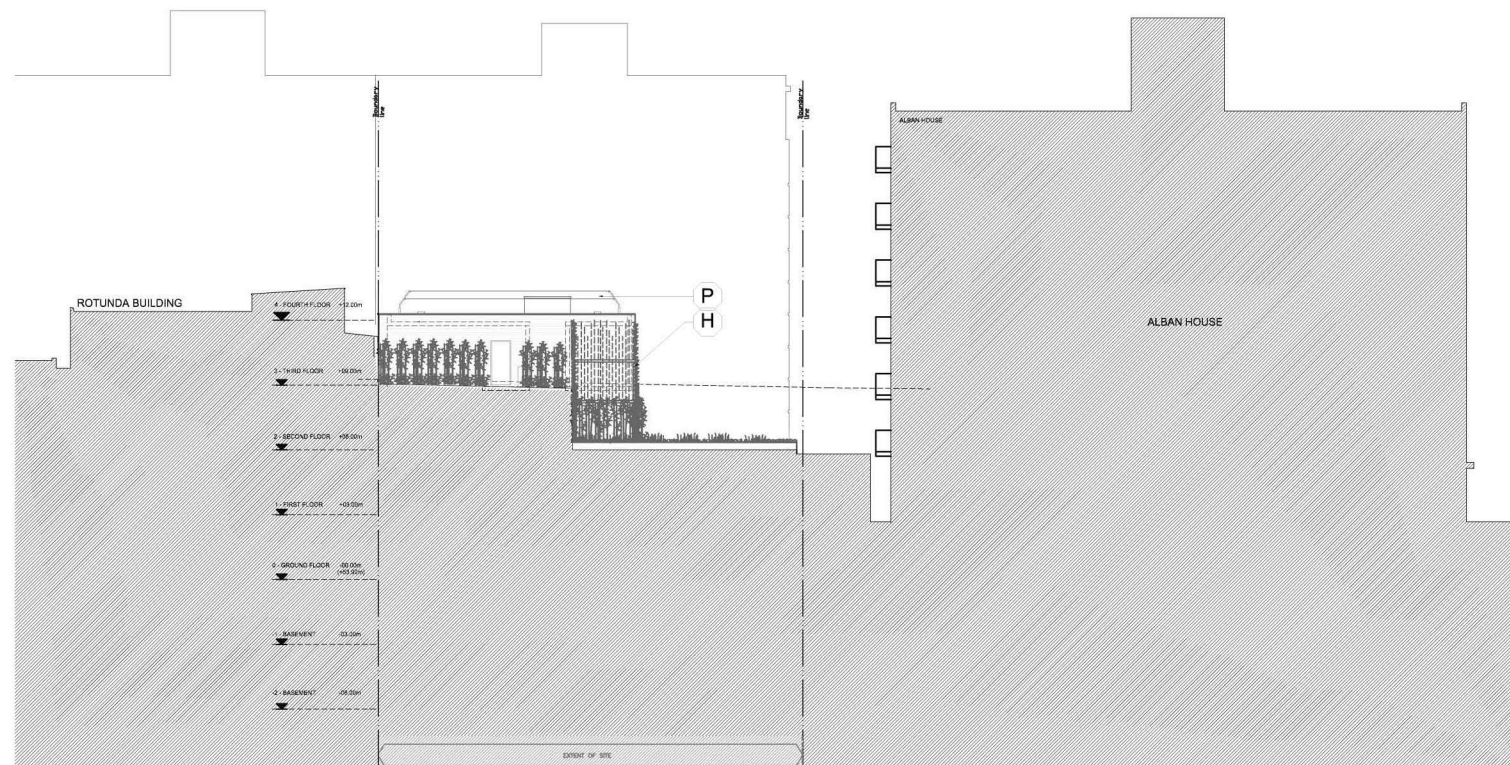
FR14-S73-004



## LEGEND - PLANNING

- (A) Cast masonry
- (B) PPC metal framed glazing system
- (C) PPC metal balustrading
- (D) Painted metal roof edging
- (E) Painted metalwork
- (F) Precast concrete panels
- (G) zinc insulated panels
- (H) Hard wood slated timber privacy screens
- (J) Hard wood timber balcony soffits
- (K) Opaque glazed privacy panels
- (L) Metal shutters
- (M) Flat Roof
- (N) Green Roof
- (O) Zinc balustrade and timber handrail
- (P) Glass balustrade and timber handrail
- (Q) Green walling system

PLANNING 2010 DWG. NO: FRD-PL-303



## LEGEND - CURRENT

- (A) Stone Cladding - white polished portland limestone
- (B1) PPC Aluminum framed glazing system by SCHUCO ASS 70i HI
- (B2) Aluminum framed glazing system by REYNEARS
- (B3) Door or glazing by others
- (C) Glazed balustrade (light green tinted) on steel frame
- (D) PPC metal louvered sunscreen by SCHUCO or similar
- (E) PPC metal work - dark grey
- (F) Steel beam painted black
- (G) Zink insulated panels
- (H) Brick - IBSTOCK - terracotta - Atlas smooth red or equal
- (I) Retail fascia - glazing system - aluminium frame with vent grill
- (J) Terracotta natural clay cladding tiles
- (K) Opaque glazed privacy screens
- (L) Glazed sub-station and refuse Bin Storage
- (M) Flat roof
- (N) Green/brown roof by the Landscape Architects
- (O) Signage - by others
- (P) Roof Safety railing by ICB Sustainable Roof Solutions or similar
- (Q) Green wall systems by MMA ([www.jakob.co.uk](http://www.jakob.co.uk))
- (R) Glazed shop front
- (S) White smooth render

CURRENT

