

120 FINCHLEY ROAD - PLANNING GRANTED AND PROPOSED COMPARISON

S-73

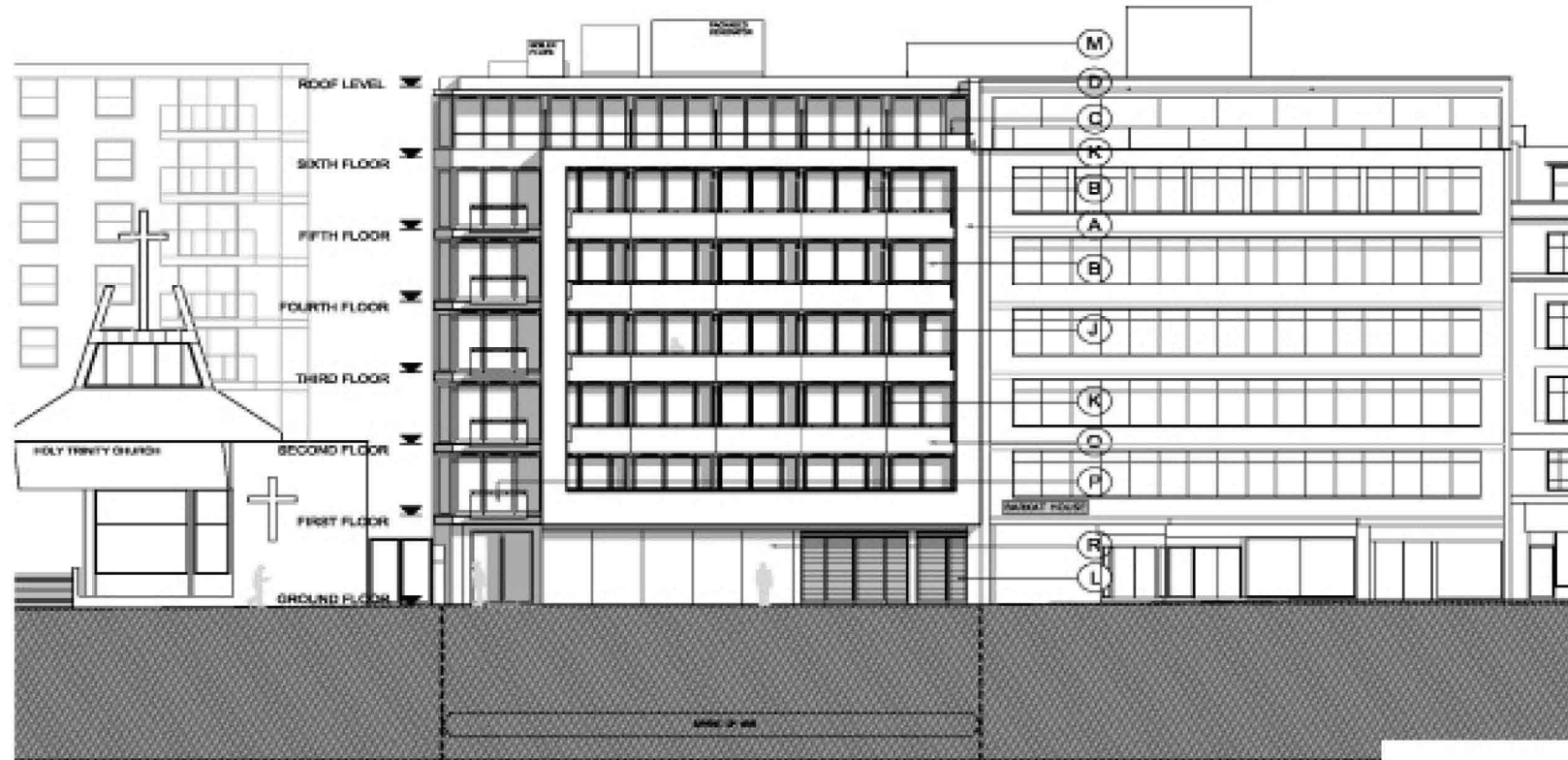
FRONT ELEVATION (WEST)

DATE - 21.01.2016

FR14-S73-001

rev A

DATE - 01.03.2016

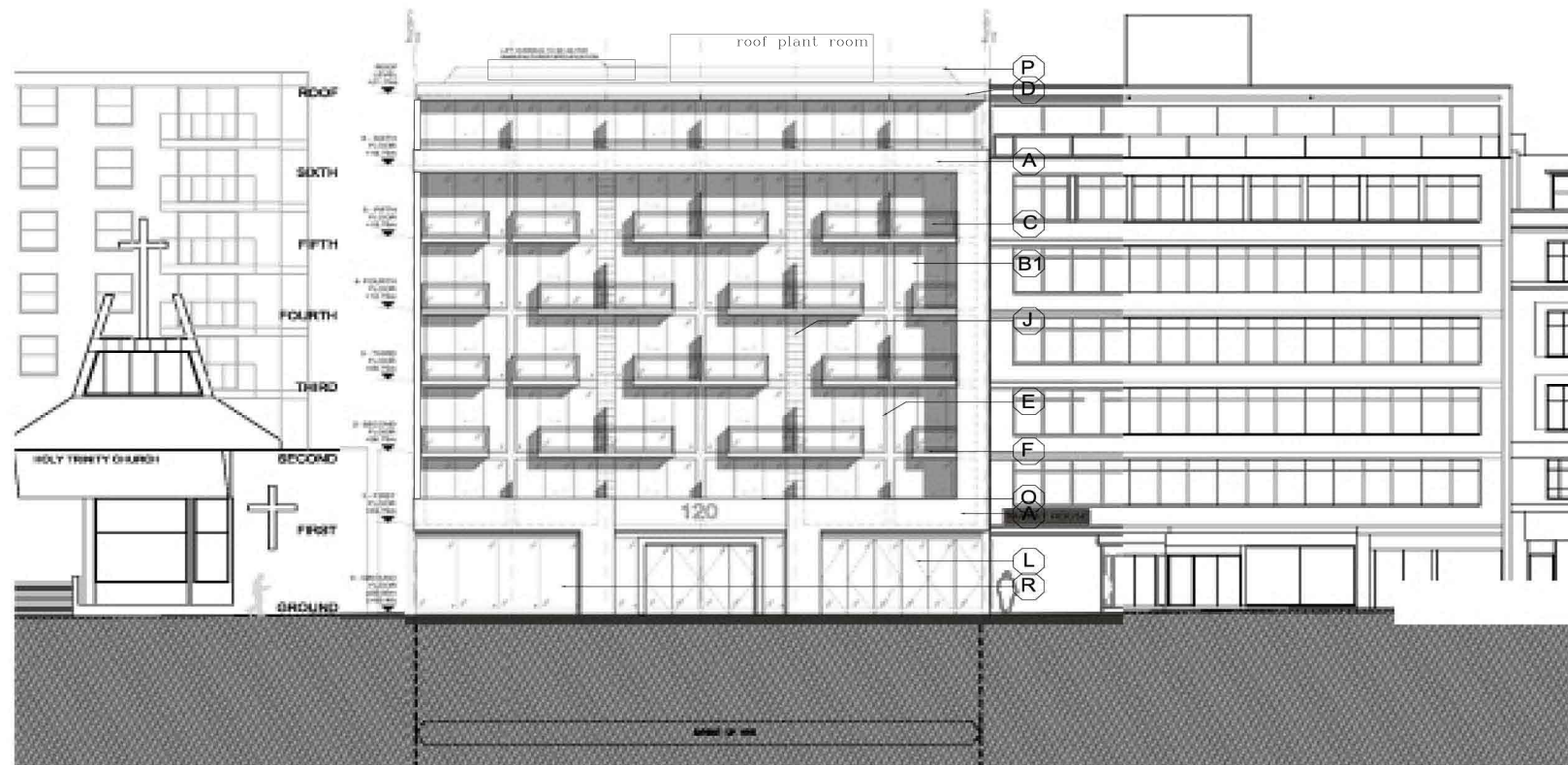


LEGEND - PLANNING

- (A) Cast masonry
- (B) PPC metal framed glazing system
- (C) PPC metal balustrading
- (D) Painted metal roof edging
- (E) Painted metalwork
- (F) Precast concrete panels
- (G) zinc insulated panels
- (H) Hard wood slated timber privacy screens
- (J) Hard wood timber balcony soffits
- (K) Opaque glazed privacy panels
- (L) Metal shutters
- (M) Flat Roof
- (N) Green Roof
- (O) Zinc balustrade and timber handrail
- (P) Glass balustrade and timber handrail
- (Q) Green walling system

PLANNING 2010

DWG.NO: FRD-PL-301



LEGEND - CURRENT

- (A) Stone Cladding - white polished portland limestone
- (B1) PPC Aluminum framed glazing system by SCHUCO ASS 70i HI
- (B2) Aluminum framed glazing system by REYNEARS
- (B3) Door or glazing by others
- (C) Glazed balustrade (light green tinted) on steel frame
- (D) PPC metal louvered sunscreen by SCHUCO or similar
- (E) PPC metal work - dark grey
- (F) Steel beam painted black
- (G) Zinc insulated panels
- (H) Brick - IBSTOCK - terracotta - Atlas smooth red or equal
- (I) Retail fascia - glazing system - aluminium frame with vent grill
- (J) Terracotta natural clay cladding tiles
- (K) Opaque glazed privacy screens
- (L) Glazed sub-station and refuse Bin Storage
- (M) Flat roof
- (N) Green/brown roof by the Landscape Architects
- (O) Signage - by others
- (P) Roof Safety railing by ICB Sustainable Roof Solutions or similar
- (Q) Green wall systems by MMA (www.jakob.co.uk)
- (R) Glazed shop front
- (S) White smooth render

CURRENT

