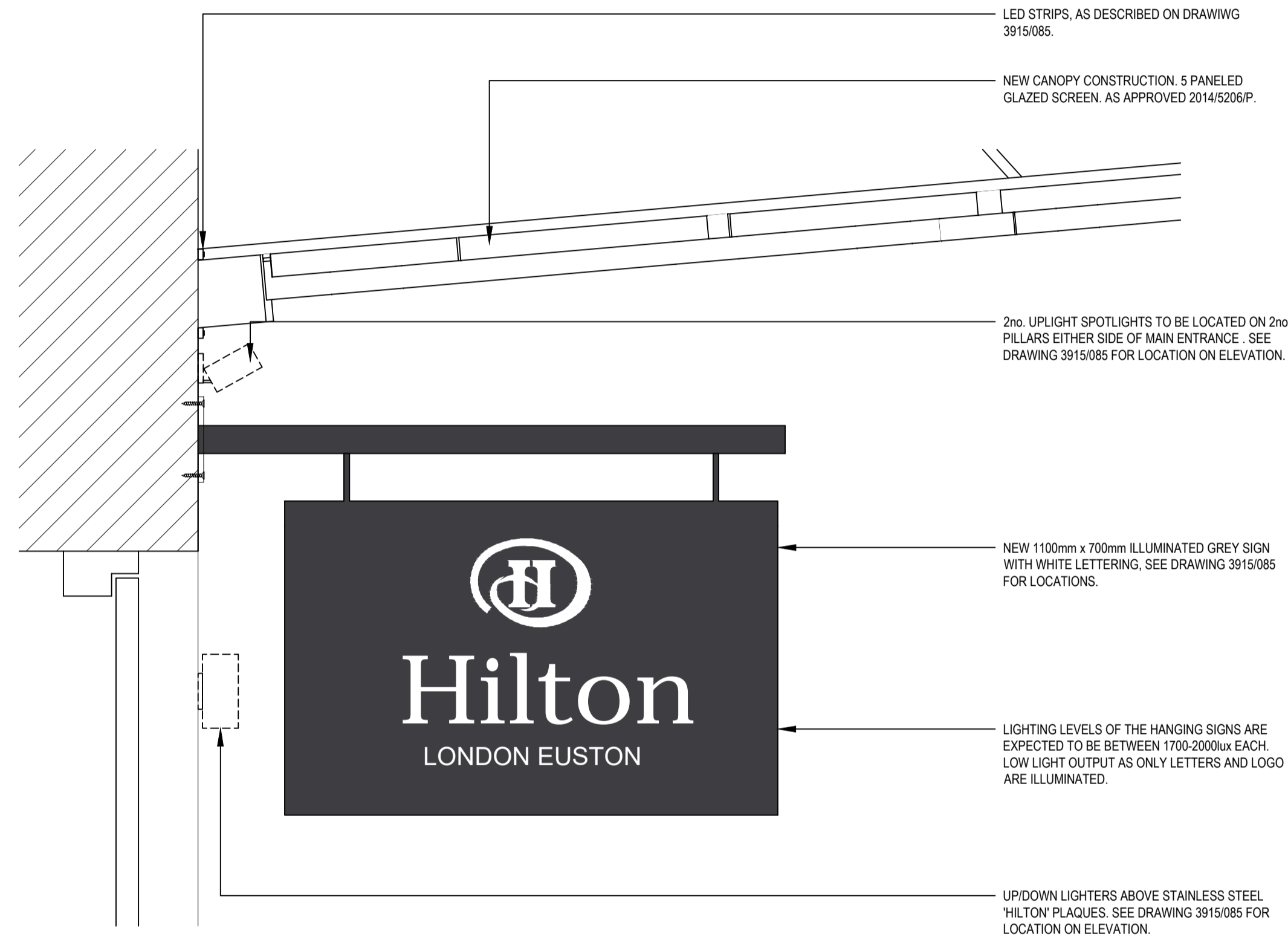


MAIN ENTRANCE ELEVATION
 SCALE: 1:50



SECTION A: EXTERIOR SIGNAGE
 SCALE: 1:10

- LED STRIPS, AS DESCRIBED ON DRAWING 3915/085.
- NEW CANOPY CONSTRUCTION: 5 PANELED GLAZED SCREEN, AS APPROVED 2014/5206/P.
- 2nd. UPLIGHT SPOTLIGHTS TO BE LOCATED ON 2nd. PILLARS EITHER SIDE OF MAIN ENTRANCE. SEE DRAWING 3915/085 FOR LOCATION ON ELEVATION.
- NEW 1100mm x 700mm ILLUMINATED GREY SIGN WITH WHITE LETTERING. SEE DRAWING 3915/085 FOR LOCATIONS.
- LIGHTING LEVELS OF THE HANGING SIGNS ARE EXPECTED TO BE BETWEEN 1700-2000lux EACH. LOW LIGHT OUTPUT AS ONLY LETTERS AND LOGO ARE ILLUMINATED.
- UP/DOWN LIGHTERS ABOVE STAINLESS STEEL 'HILTON' PLAQUES. SEE DRAWING 3915/085 FOR LOCATION ON ELEVATION.

REV: A BY: DJW CFI ☒ DATE: 14.03.16
 Drawing updated in-line with manufacturers recommendations. Cartouche re-instated.



MORRISON DESIGN
 CHARTERED ARCHITECTS

St Alkmunds House, 103 Belper Road, Derby DE1 3ES
 T: 01332 363355 F: 01332 291441 E: architect@morrisondesign.co.uk

Job Title
Hilton London Euston
 Upper Woburn Place
 London
 Muirgold Ltd

Drawing Title
New Signage
 Proposed Sections
 File Ref.:
 Plotter Settings: monochrome_lte

Scale: As Noted Drawn: DJW CFI ☒ Date: 21.12.15
 Job No. Drawing No. Revision
 3915 086 A

PLANNING SUBMISSION