

Photosheet P 040 Existing Photographs 1st floor North floor repairs and strengthening



Fig 1 No12 Entrance & West Elevation to North/South Accommodation above

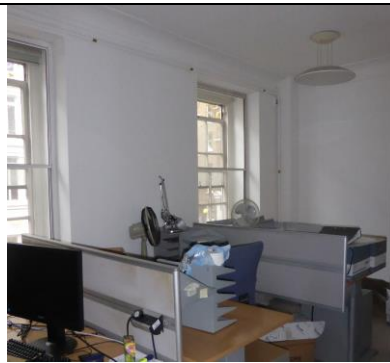


Fig 2 Existing First Floor Office F1 to Gray's Inn Road



Fig 3 Hall and Toilet Entrance Doors

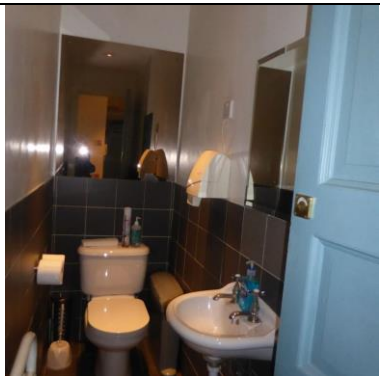


Fig 4 Existing 1st Floor Toilet

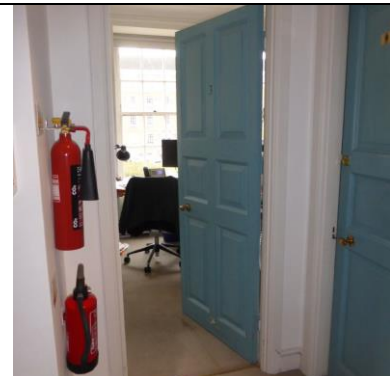


Fig 5 Hall looking into Office facing Gray's Inn Square



Fig 6 Floor structure in Office East side of First Floor & pocket of rot in bressumer beam



Fig 7 Existing split bressumer beam/ junction to centre beam below the Hall flooring



Fig 8 East/West bressumer beam below Hall spanning to Grays Inn Square external wall



Fig 9 Floor structure in North East corner of The First Floor