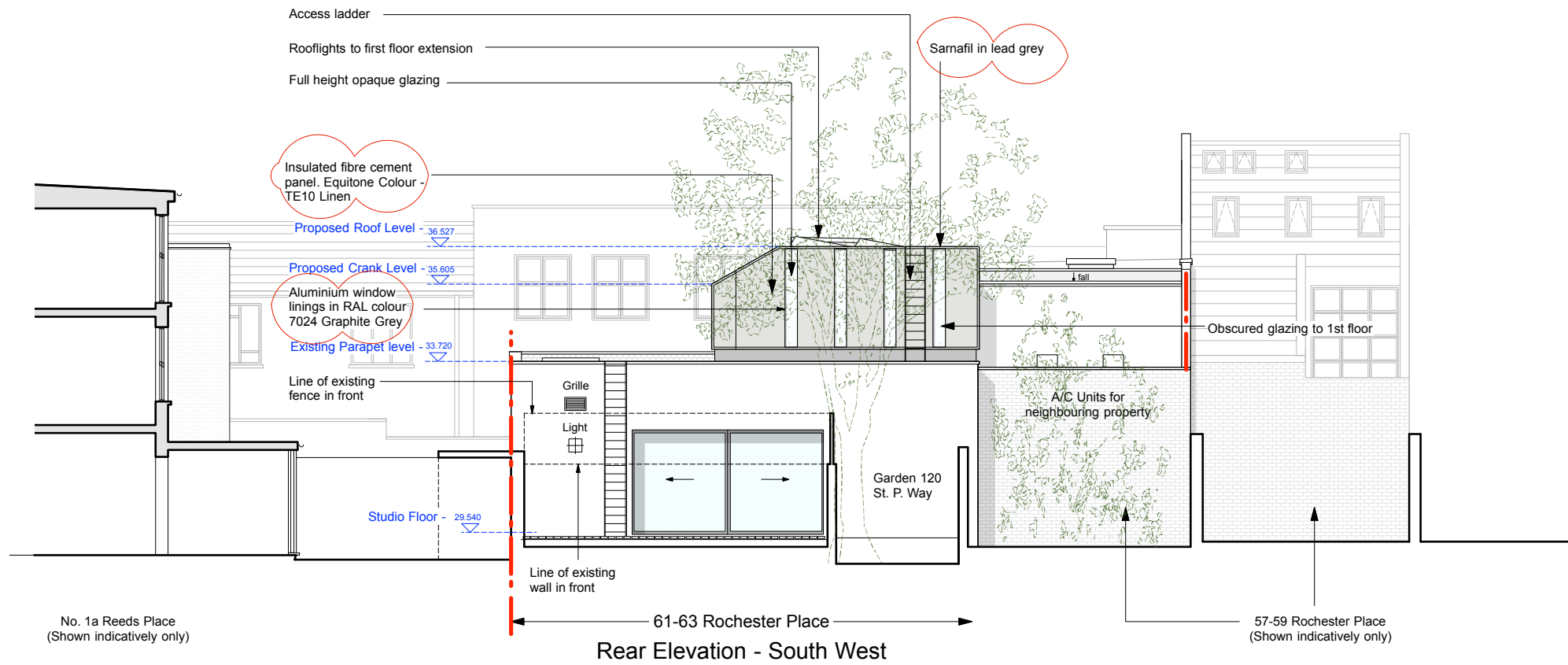


61-63 Rochester Place  
Front Elevation - North East



61-63 Rochester Place  
Rear Elevation - South West

REV.P - 28.01.16 - Submission of condition no.4  
Rev O: 13/12/13 - 2nd floor removed.



Norton Ellis Architects Ltd  
14 Baltic Street East  
London EC1Y 0UJ  
Tel: 020 7490 3142  
[www.nortonellis.co.uk](http://www.nortonellis.co.uk)  
[mail@nortonellis.co.uk](mailto:mail@nortonellis.co.uk)

These particulars do not constitute, nor constitute any part of, an offer or a contract. All statements contained in these particulars as to this property are made without the responsibility on the part of Norton Ellis Architects Ltd, or the Vendors or Lessors. None of the statements contained in these particulars as to this property are to be relied on as statements or representations of fact. All measurements are approximate and no responsibility is taken for any error, omission, or mis-statement and any intending purchaser or tenants must satisfy themselves by inspection or otherwise as to the correctness of each of the statements contained in these particulars/ plans.  
Do not scale from this drawing. All dimensions to be checked on site and any discrepancy to be reported to the Architect prior to construction. This drawing to be read in conjunction with all other drawings including those of other consultants. Samples of all materials to be provided for comment/ approval prior to fabrication/construction.  
© 2013 Norton Ellis Architects Ltd.

## Proposed Front & Rear Elevations

PURPOSE OF ISSUE  
Preliminary   
Planning   
Tender   
Construction

235-204  
Rev: P  
Date: 03.12.2013  
Scale: 1:100 @ A2

norton ellis architects nea

61-63 Rochester Place, NW1 9JU

Proposed Front & Rear Elevations