

**General Notes**  
 To be read in conjunction with all relevant documents  
 In the event of discrepancy notify the Architect immediately  
 This document is copyright of Hugh Cullum Architects Ltd

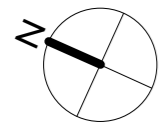
Issue Status  
 SK Information F Feasibility D Design  
 P Permissions S Scheme T Tender  
 C Construction E Existing Condition

--- Site boundary

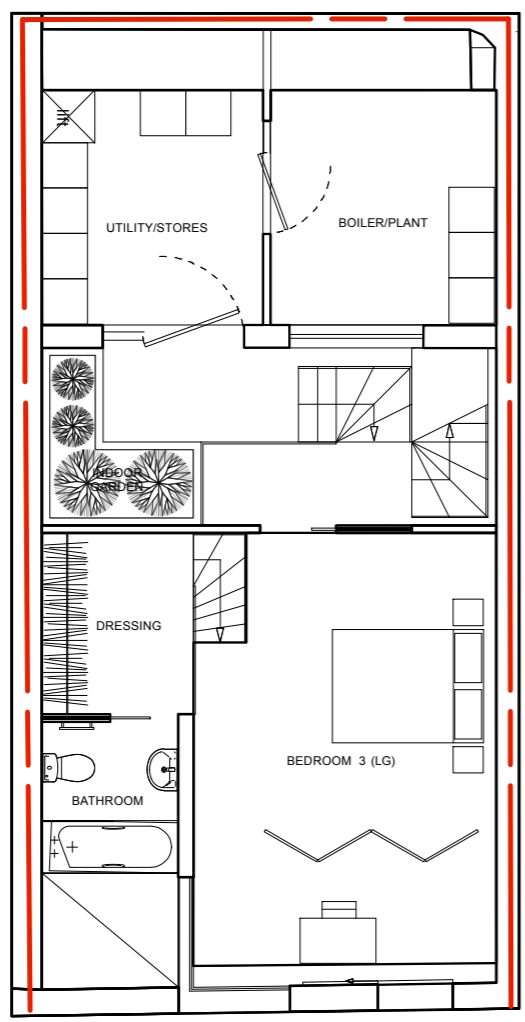
Revision: Issued for Planning Application (16.03.16/MS)  
 Revision: Information (date/drawn by)

**HUGH CULLUM ARCHITECTS LTD**  
 Bloomsbury Design  
 61b Judd Street  
 London WC1H 9QT  
 t 020 7383 7647  
 f 020 7387 7645  
 mail@hughcullum.com

**26 King's Mews**  
 Alteration to consented scheme  
 Proposed Site Plan  
 1:100@A3 March 2016  
**KM26-P210( )**



A

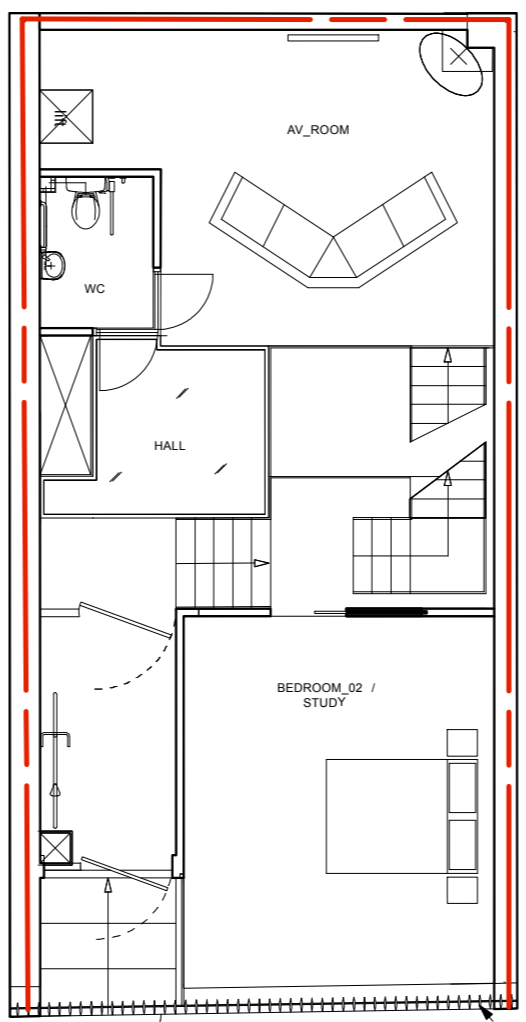


A

**AS PROPOSED\_** BASEMENT FLOOR PLAN



A



A

**AS PROPOSED\_** GROUND FLOOR PLAN

Powder coated metal  
brise soleil to give  
privacy

**General Notes**

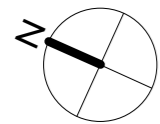
To be read in conjunction with all relevant documents  
In the event of discrepancy notify the Architect immediately  
This document is copyright of Hugh Cullum Architects Ltd

Issue Status  
 SK Information    F Feasibility    D Design  
 P Permissions    S Scheme    T Tender  
 C Construction    E Existing Condition

--- Site boundary

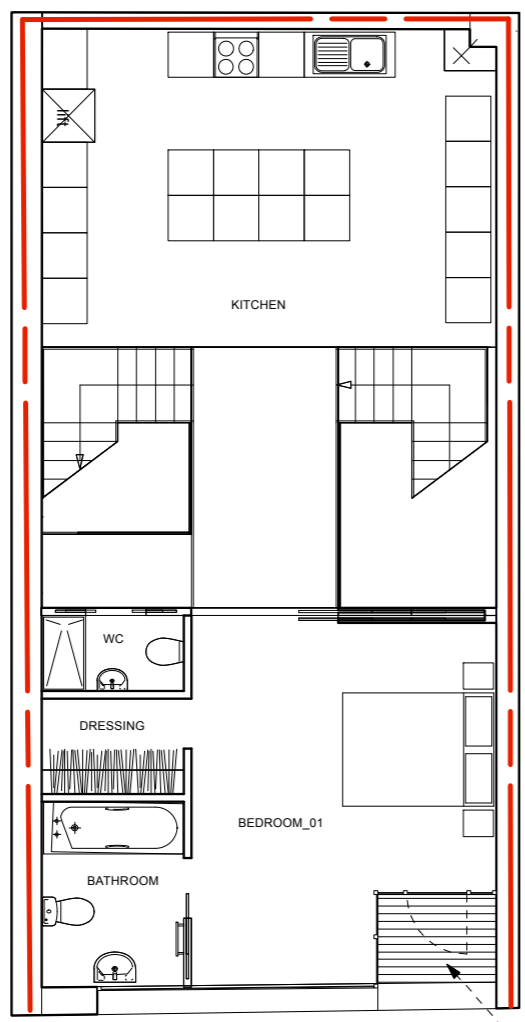
Revision: Issued for Planning Application (16.03.16/MS)  
 Revision: Information (date/drawn by)

**HUGH CULLUM** 26 King's Mews  
 ARCHITECTS LTD  
 Bloomsbury Design    Aletration to consented scheme  
 61b Judd Street    Proposed  
 London WC1H 9QT    Basement and Ground Floor Plans  
 t 020 7383 7647    1:100@A3 March 2016  
 f 020 7387 7645  
 mail@hughcullum.com    **KM26-P211( )**



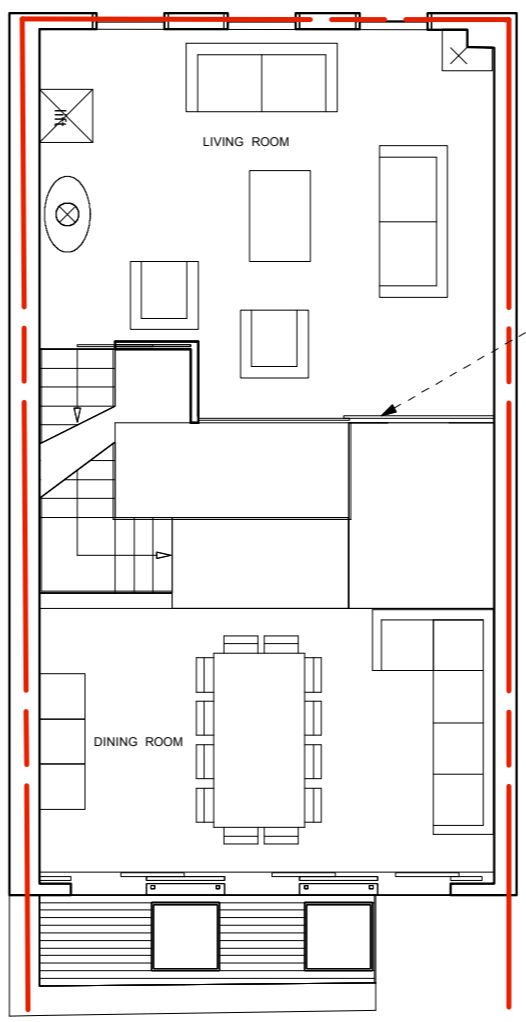
A

A



A

New terrace



A

Sliding glazed soundproof doors

**General Notes**

To be read in conjunction with all relevant documents  
 In the event of discrepancy notify the Architect immediately  
 This document is copyright of Hugh Cullum Architects Ltd

Issue Status  
 SK Information F Feasibility D Design  
 P Permissions S Scheme T Tender  
 C Construction E Existing Condition

--- Site boundary

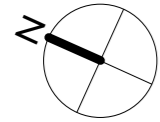
Revision: Issued for Planning Application (16.03.16/MS)  
 Revision: Information (date/drawn by)

**AS PROPOSED\_ FIRST FLOOR PLAN**

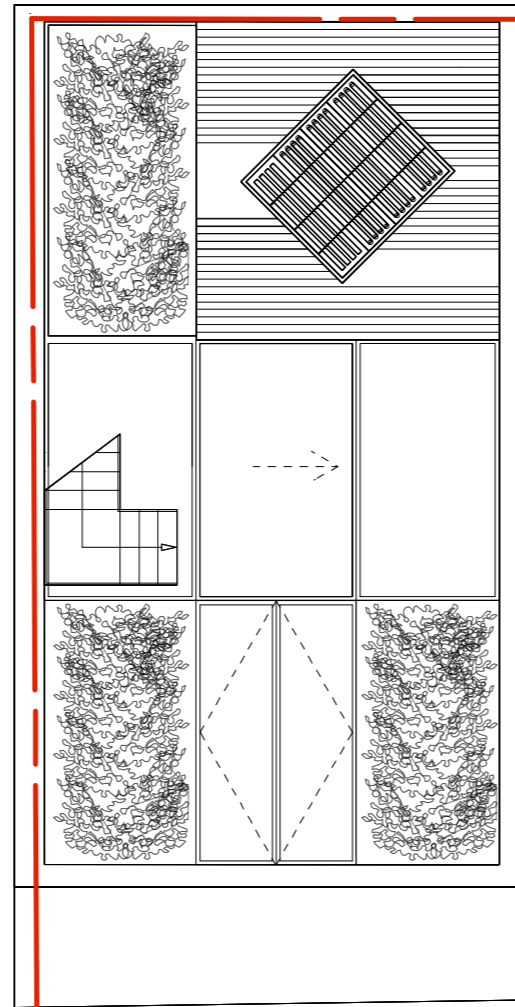
**AS PROPOSED\_ SECOND FLOOR PLAN**



**HUGH CULLUM ARCHITECTS LTD** 26 King's Mews  
 Bloomsbury Design Alteration to consented scheme  
 61b Judd Street Proposed  
 London WC1H 9QT First and Second Floor Plans  
 t 020 7383 7647 1:100@A3 March 2016  
 f 020 7387 7645  
 mail@hughcullum.com **KM26-P212( )**



A



A

**General Notes**

To be read in conjunction with all relevant documents  
In the event of discrepancy notify the Architect immediately  
This document is copyright of Hugh Cullum Architects Ltd

Issue Status  
SK Information F Feasibility D Design  
P Permissions S Scheme T Tender  
C Construction E Existing Condition

--- Site boundary

Revision: Issued for Planning Application (16.03.16/MS)

Revision: Information (date/drawn by)

**AS PROPOSED\_ ROOF PLAN**

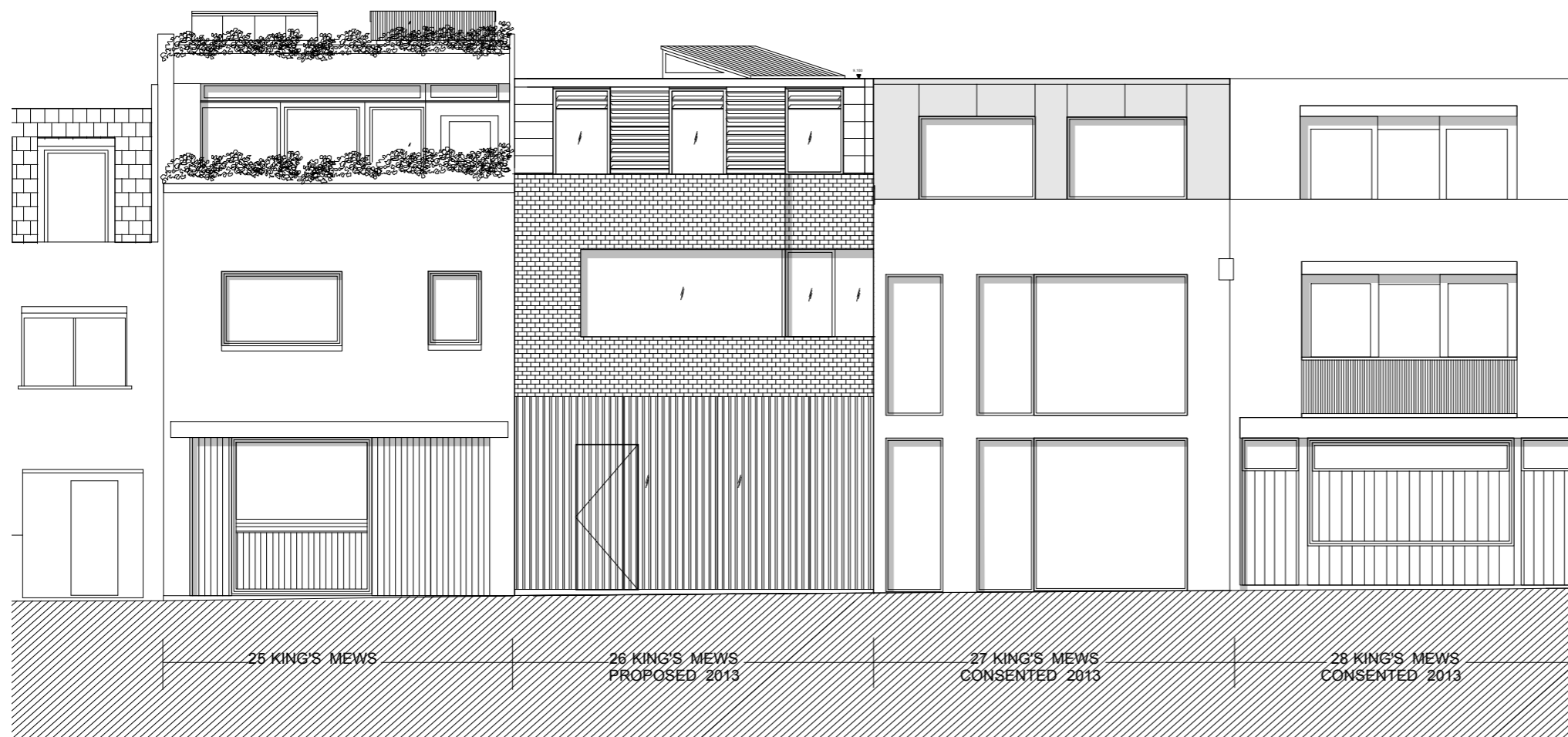


**HUGH CULLUM** 26 King's Mews  
ARCHITECTS LTD  
Bloomsbury Design Alteration to consented scheme  
61b Judd Street Proposed  
London WC1H 9QT Roof Plan  
t 020 7383 7647 1:100@A3 March 2016  
f 020 7387 7645  
mail@hughcullum.com **KM26-P213( )**

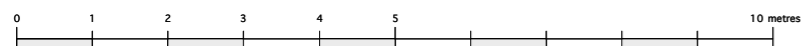
**General Notes**

To be read in conjunction with all relevant documents  
In the event of discrepancy notify the Architect immediately  
This document is copyright of Hugh Cullum Architects Ltd

Issue Status  
SK Information F Feasibility D Design  
P Permissions S Scheme T Tender  
C Construction E Existing Condition



**AS PROPOSED\_ FRONT ELEVATION**



Revision: Issued for Planning Application (16.03.16/MS)

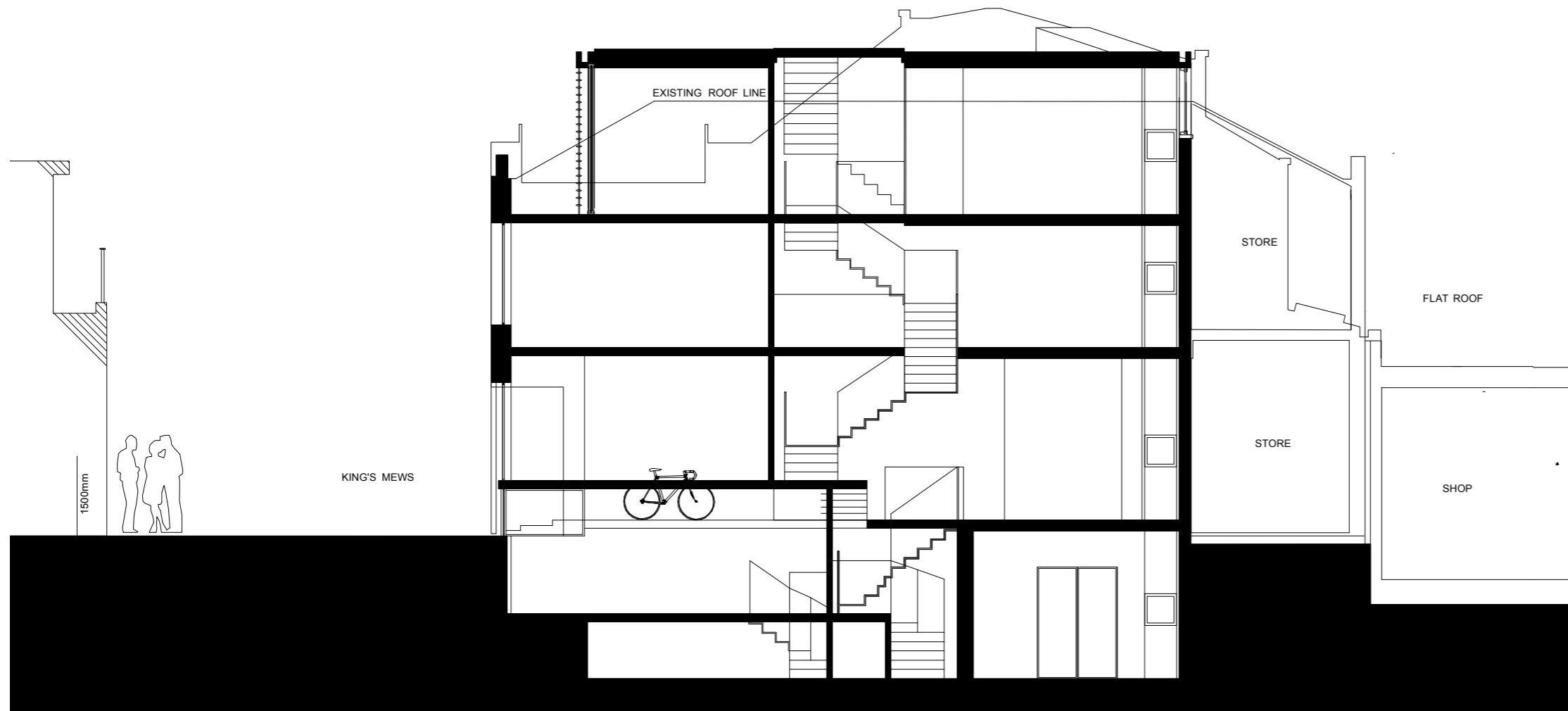
Revision: Information (date/drawn by)

**HUGH CULLUM** 26 King's Mews  
ARCHITECTS LTD  
Bloomsbury Design Alteration to consented scheme  
61b Judd Street Proposed  
London WC1H 9QT Front Elevation  
t 020 7383 7647 1:100@A3 March 2016  
f 020 7387 7645  
mail@hughcullum.com **KM26-P214( )**

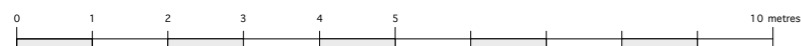
**General Notes**

To be read in conjunction with all relevant documents  
In the event of discrepancy notify the Architect immediately  
This document is copyright of Hugh Cullum Architects Ltd

Issue Status  
SK Information F Feasibility D Design  
P Permissions S Scheme T Tender  
C Construction E Existing Condition



**AS PROPOSED\_SECTION AA**



Revision: Issued for Planning Application (16.03.16/MS)

Revision: Information (date/drawn by)

**HUGH CULLUM ARCHITECTS LTD**  
26 King's Mews  
Bloomsbury Design  
61b Judd Street  
London WC1H 9QT  
t 020 7383 7647  
f 020 7387 7645  
mail@hughcullum.com  
Alteration to consented scheme  
Proposed Section AA  
1:100@A3 March 2016  
**KM26-P215( )**