

General Notes
 To be read in conjunction with all relevant documents
 In the event of discrepancy notify the Architect immediately
 This document is copyright of Hugh Cullum Architects Ltd

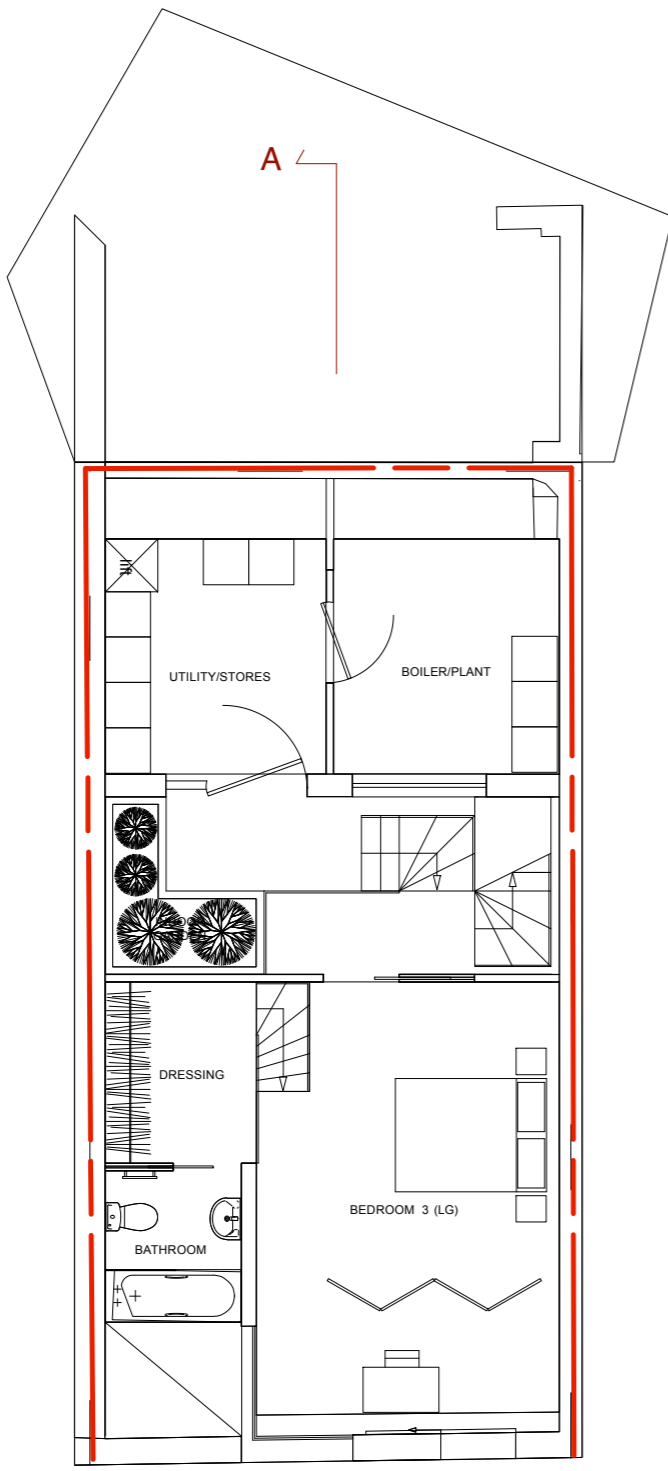
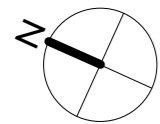
Issue Status
 SK Information F Feasibility D Design
 P Permissions S Scheme T Tender
 C Construction E Existing Condition

--- Site boundary

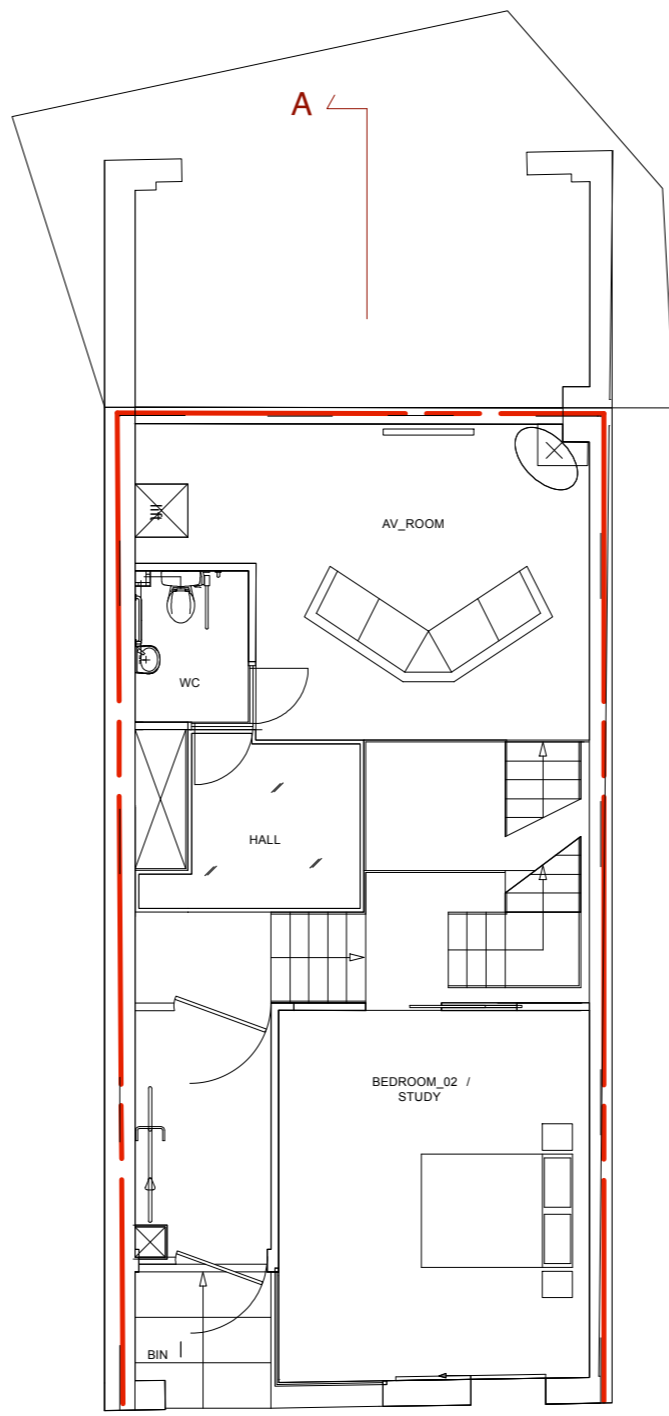
Revision: Issued for Planning Application (16.03.16/MS)
 Revision: Information (date/drawn by)

HUGH CULLUM ARCHITECTS LTD
 Bloomsbury Design
 61b Judd Street
 London WC1H 9QT
 t 020 7383 7647
 f 020 7387 7645
 mail@hughcullum.com

26 King's Mews
 Alteration to consented scheme
 Consented as planning app.2013/7847/P
 Site Plan
 1:100@A3 March 2016
KM26-P200()



AS CONSENTED_ BASEMENT FLOOR PLAN



AS CONSENTED_ GROUND FLOOR PLAN



General Notes

To be read in conjunction with all relevant documents
 In the event of discrepancy notify the Architect immediately
 This document is copyright of Hugh Cullum Architects Ltd

Issue Status
 SK Information F Feasibility D Design
 P Permissions S Scheme T Tender
 C Construction E Existing Condition

--- Site boundary

Revision: Issued for Planning Application (16.03.16/MS)
 Revision: Information (date/drawn by)

HUGH CULLUM ARCHITECTS LTD
 Bloomsbury Design
 61b Judd Street
 London WC1H 9QT
 t 020 7383 7647
 f 020 7387 7645
 mail@hughcullum.com

26 King's Mews
 Alteration to consented scheme
 Consented as planning app.2013/7847/P
 Basement and Ground Floor Plans
 1:100@A3 March 2016
KM26-P201()

General Notes

To be read in conjunction with all relevant documents
In the event of discrepancy notify the Architect immediately
This document is copyright of Hugh Cullum Architects Ltd

Issue Status
SK Information F Feasibility D Design
P Permissions S Scheme T Tender
C Construction E Existing Condition

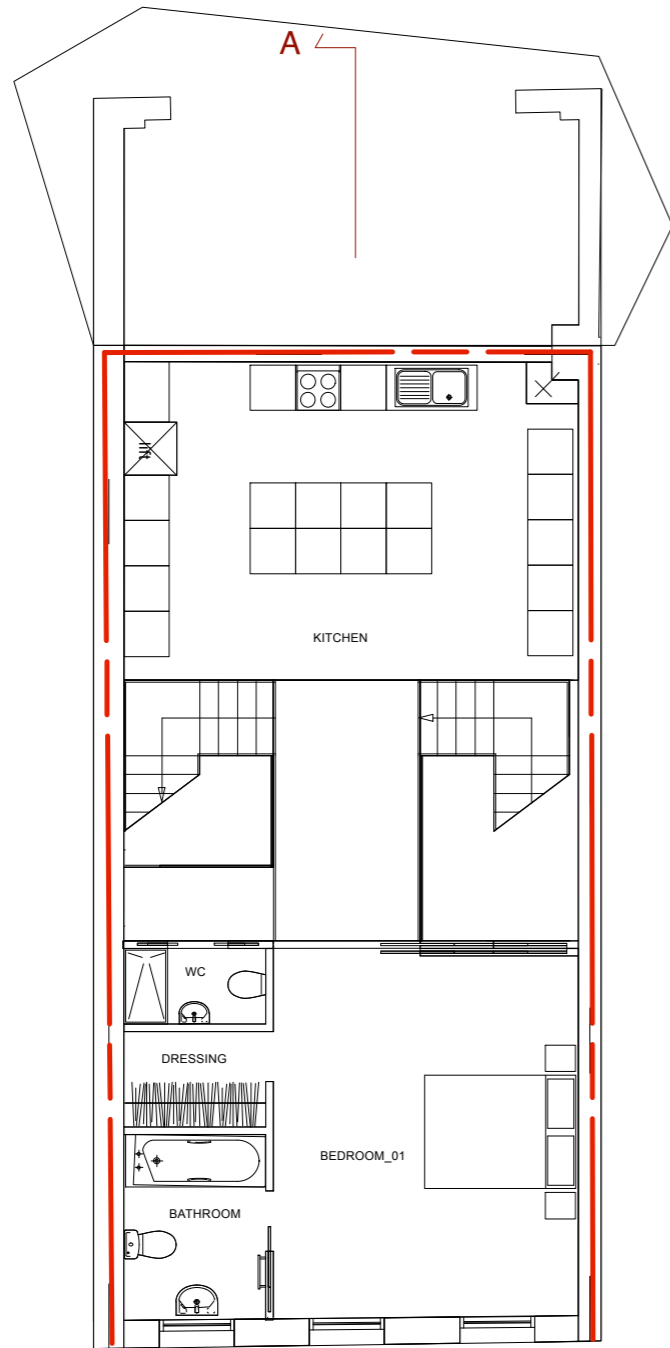
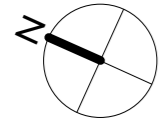
--- Site boundary

Revision: Issued for Planning Application (16.03.16/MS)

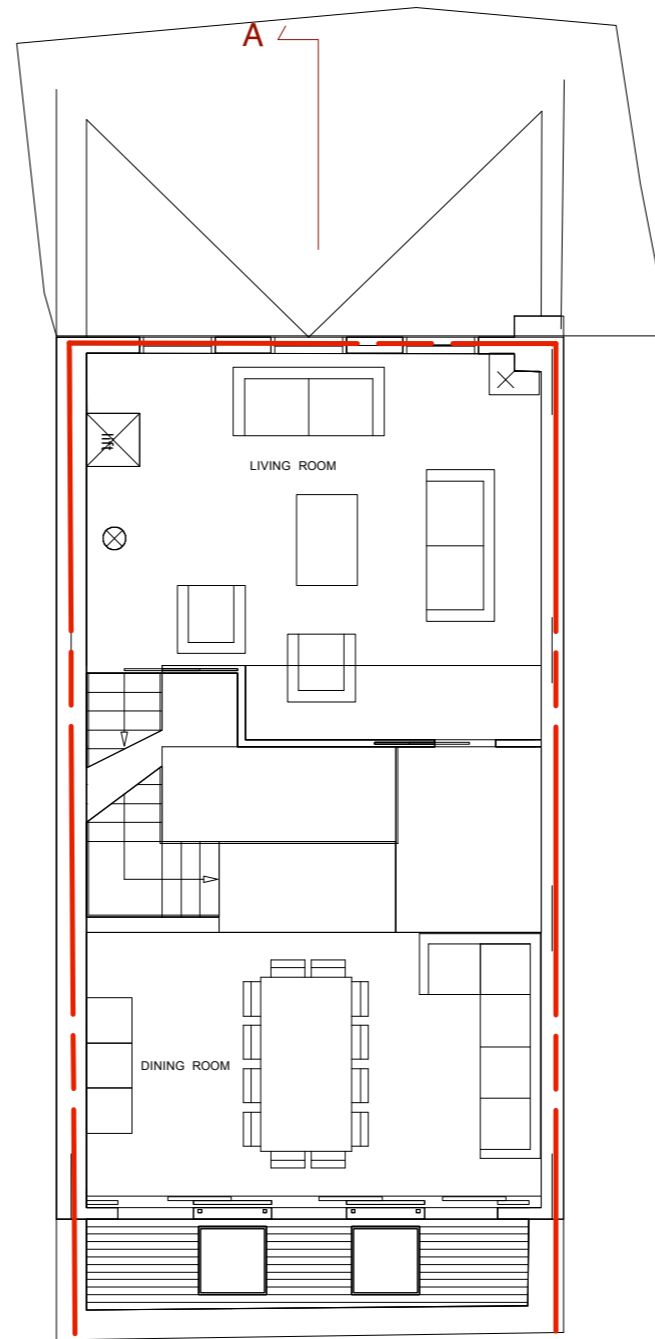
Revision: Information (date/drawn by)

HUGH CULLUM ARCHITECTS LTD
26 King's Mews
Bloomsbury Design
61b Judd Street
London WC1H 9QT
t 020 7383 7647
f 020 7387 7645
mail@hughcullum.com

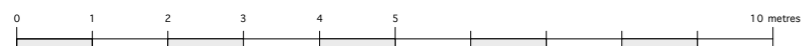
Alteration to consented scheme
Consented as planning app.2013/7847/P
First and Second Floor Plans
1:100@A3 March 2016
KM26-P202()

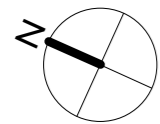


AS CONSENTED_ FIRST FLOOR PLAN

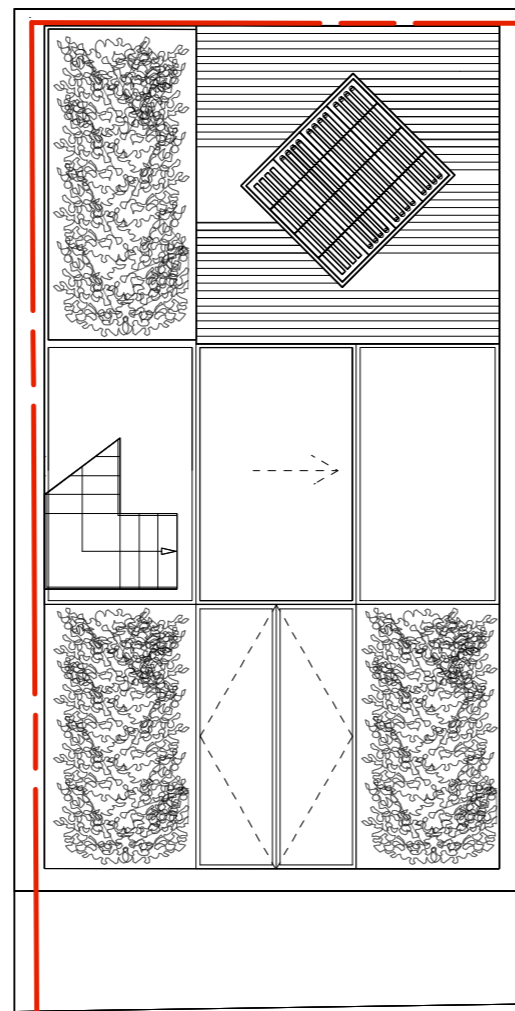


AS CONSENTED_ SECOND FLOOR PLAN





A ↙



A ↙

General Notes

To be read in conjunction with all relevant documents
In the event of discrepancy notify the Architect immediately
This document is copyright of Hugh Cullum Architects Ltd

Issue Status

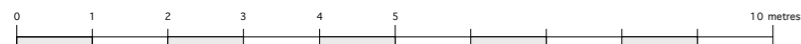
SK	Information	F	Feasibility	D	Design
P	Permissions	S	Scheme	T	Tender
C	Construction	E	Existing Condition		

--- Site boundary

Revision: Issued for Planning Application (16.03.16/MS)

Revision: Information (date/drawn by)

AS CONSENTED_ ROOF PLAN



HUGH CULLUM 26 King's Mews
 ARCHITECTS LTD
 Bloomsbury Design
 61b Judd Street
 London WC1H 9QT
 t 020 7383 7647
 f 020 7387 7645
 mail@hughcullum.com

Alteration to consented scheme
 Consented as planning app.2013/7847/P
 Roof Plan
 1:100@A3 March 2016
KM26-P203()

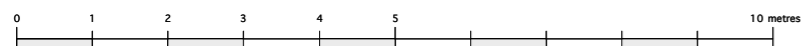
General Notes

To be read in conjunction with all relevant documents
In the event of discrepancy notify the Architect immediately
This document is copyright of Hugh Cullum Architects Ltd

Issue Status
SK Information F Feasibility D Design
P Permissions S Scheme T Tender
C Construction E Existing Condition



AS CONSENTED_ FRONT ELEVATION



Revision: Issued for Planning Application (16.03.16/MS)

Revision: Information (date/drawn by)

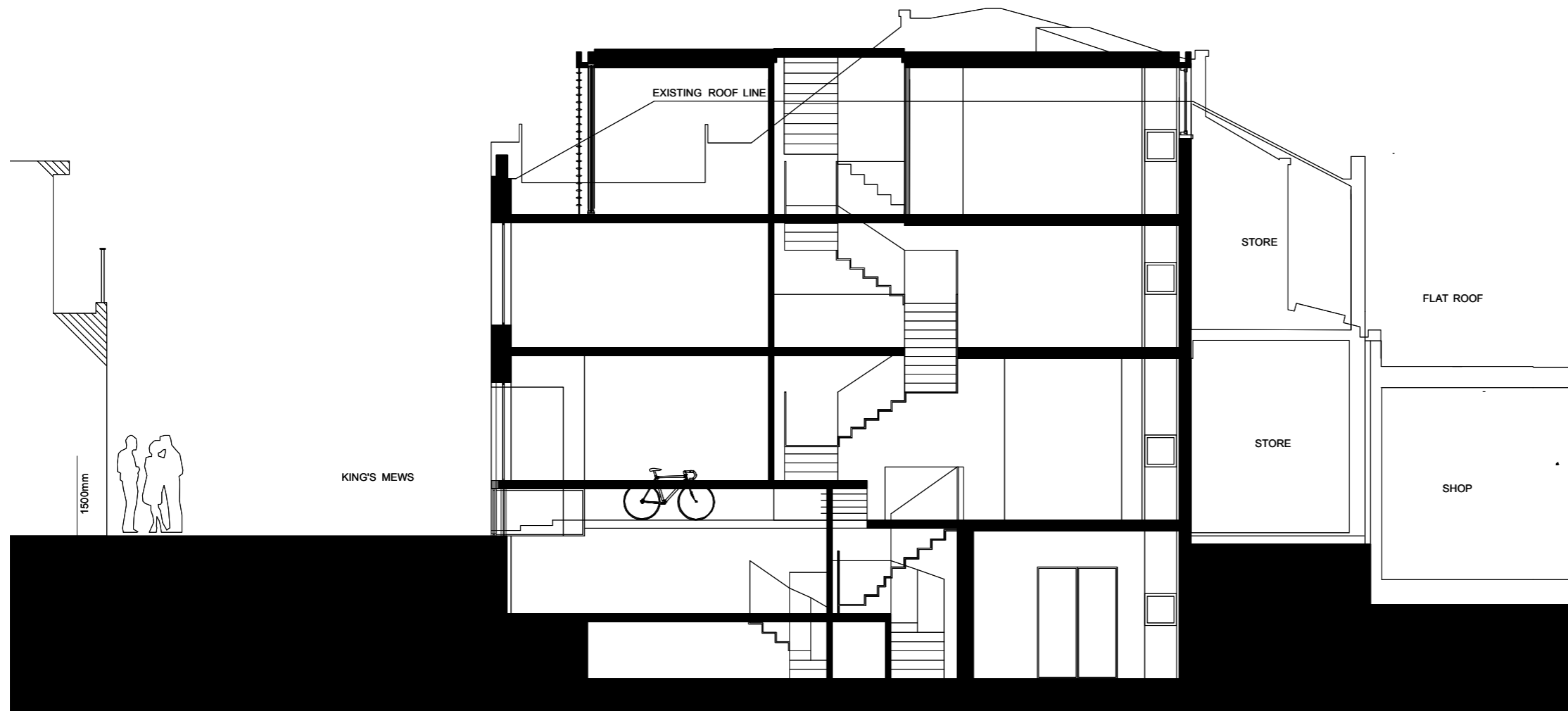
HUGH CULLUM ARCHITECTS LTD
Bloomsbury Design
61b Judd Street
London WC1H 9QT
t 020 7383 7647
f 020 7387 7645
mail@hughcullum.com

26 King's Mews
Alteration to consented scheme
Consented as planning app.2013/7847/P
Front Elevation
1:100@A3 March 2016
KM26-P204()

General Notes

To be read in conjunction with all relevant documents
In the event of discrepancy notify the Architect immediately
This document is copyright of Hugh Cullum Architects Ltd

Issue Status
SK Information F Feasibility D Design
P Permissions S Scheme T Tender
C Construction E Existing Condition



AS CONSENTED_ SECTION AA



Revision: Issued for Planning Application (16.03.16/MS)

Revision: Information (date/drawn by)

HUGH CULLUM ARCHITECTS LTD
26 King's Mews
Bloomsbury Design
Alteration to consented scheme
61b Judd Street
Consented as planning app.2013/7847/P
London WC1H 9QT
Section AA
t 020 7383 7647
1:100@A3 March 2016
f 020 7387 7645
mail@hughcullum.com
KM26-P205()