

General Notes  
All dimensions to be verified on site  
To be read in conjunction with all relevant documents  
In the event of discrepancy notify the Architect immediately  
This document is copyright of Hugh Cullum Architects Ltd

Issue Status  
SK Information F Feasibility D Design  
P Permissions S Scheme T Tender  
C Construction E Existing Condition

--- Site boundary

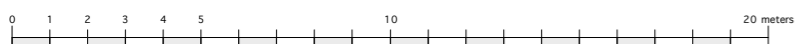


(.): Issued for Planning Application (16.03.16/MS)

Revision: Information (date/drawn by)

**HUGH CULLUM ARCHITECTS LTD**  
Bloomsbury Design  
61b Judd Street  
London WC1H 9QT  
t 020 7383 7647  
f 020 7387 7645  
mail@hughcullum.com

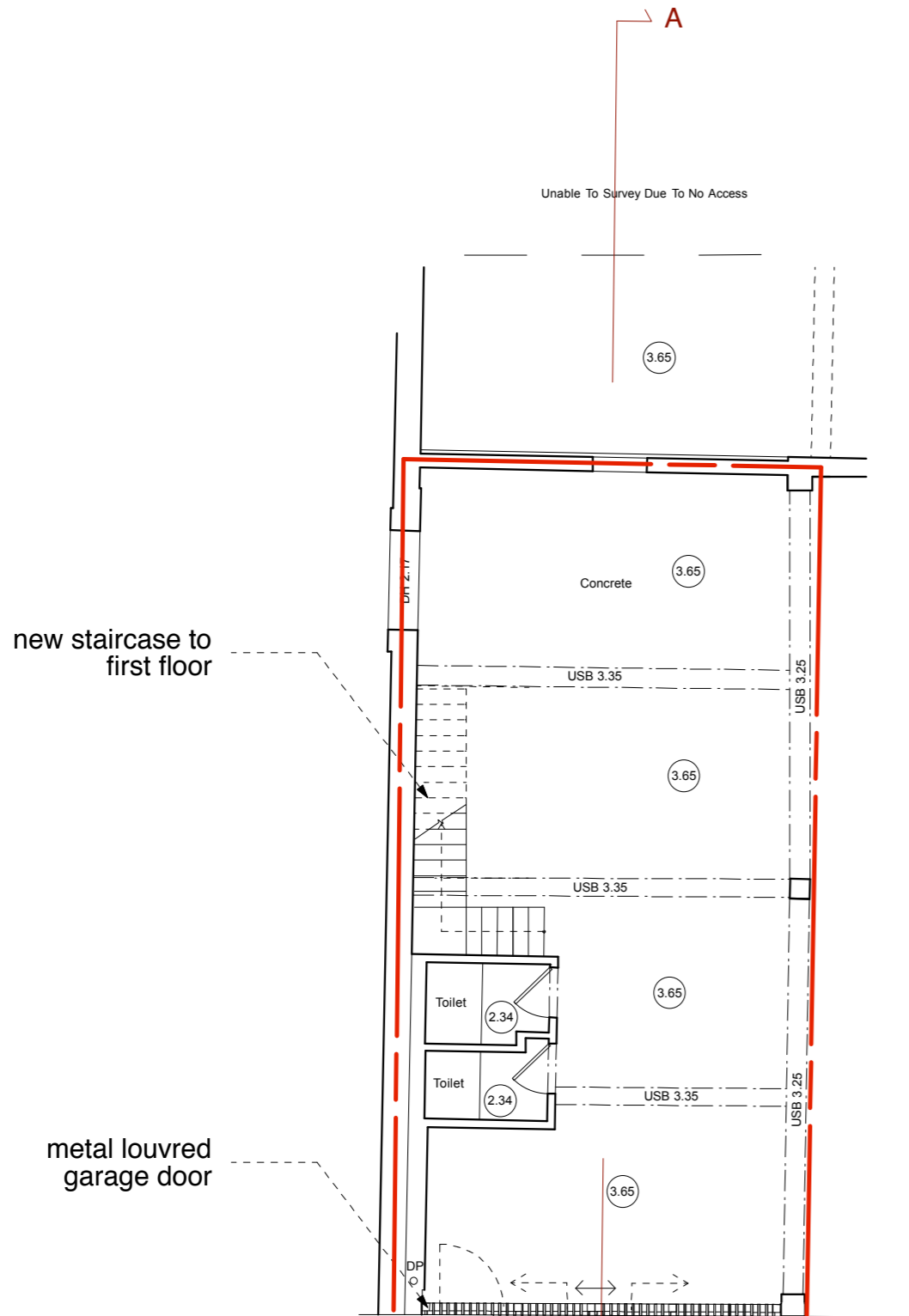
**26 King's Mews**  
**Planning Application**  
Proposed  
Site Plan  
1:200@A3 January 2016  
**KM26-P100( )**



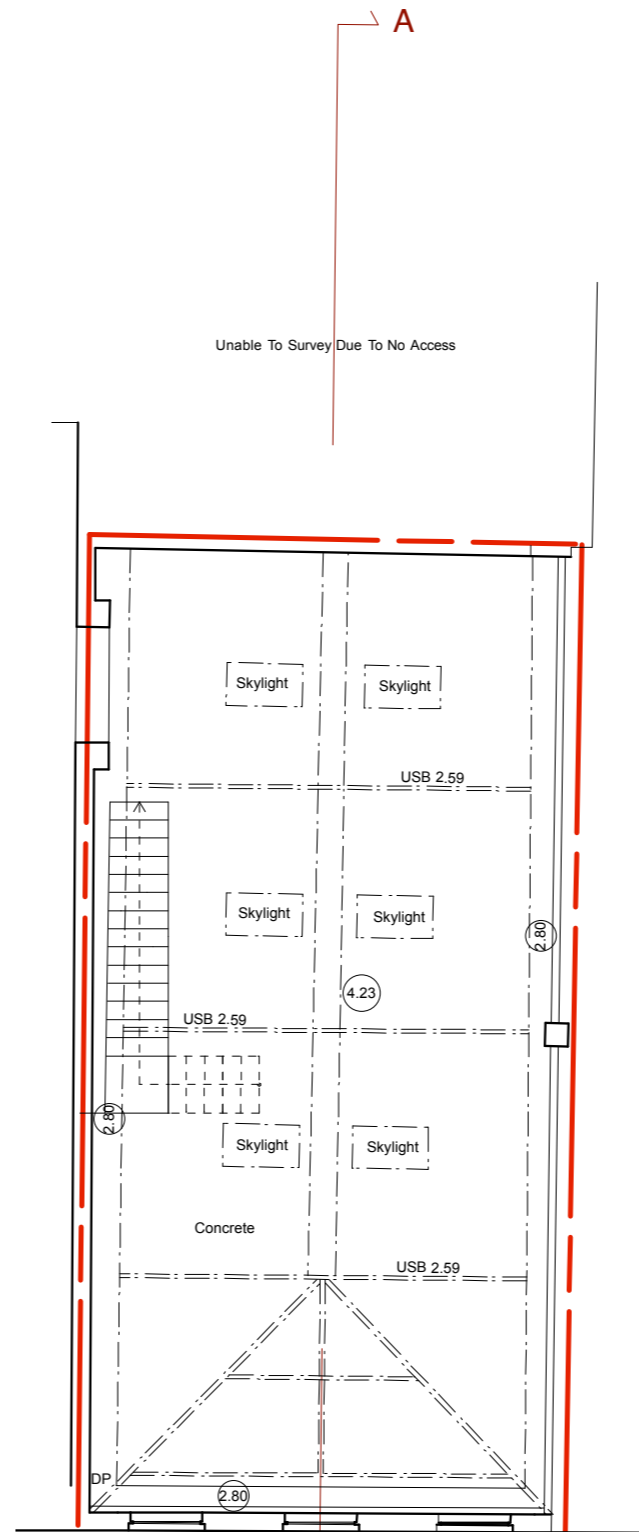
General Notes  
 All dimensions to be verified on site  
 To be read in conjunction with all relevant documents  
 In the event of discrepancy notify the Architect immediately  
 This document is copyright of Hugh Cullum Architects Ltd

Issue Status  
 SK Information F Feasibility D Design  
 P Permissions S Scheme T Tender  
 C Construction E Existing Condition

--- Site boundary



**GROUND FLOOR PLAN**



**FIRST FLOOR PLAN**

(.): Issued for Planning Application (16.03.16/MS)

Revision: Information (date/drawn by)

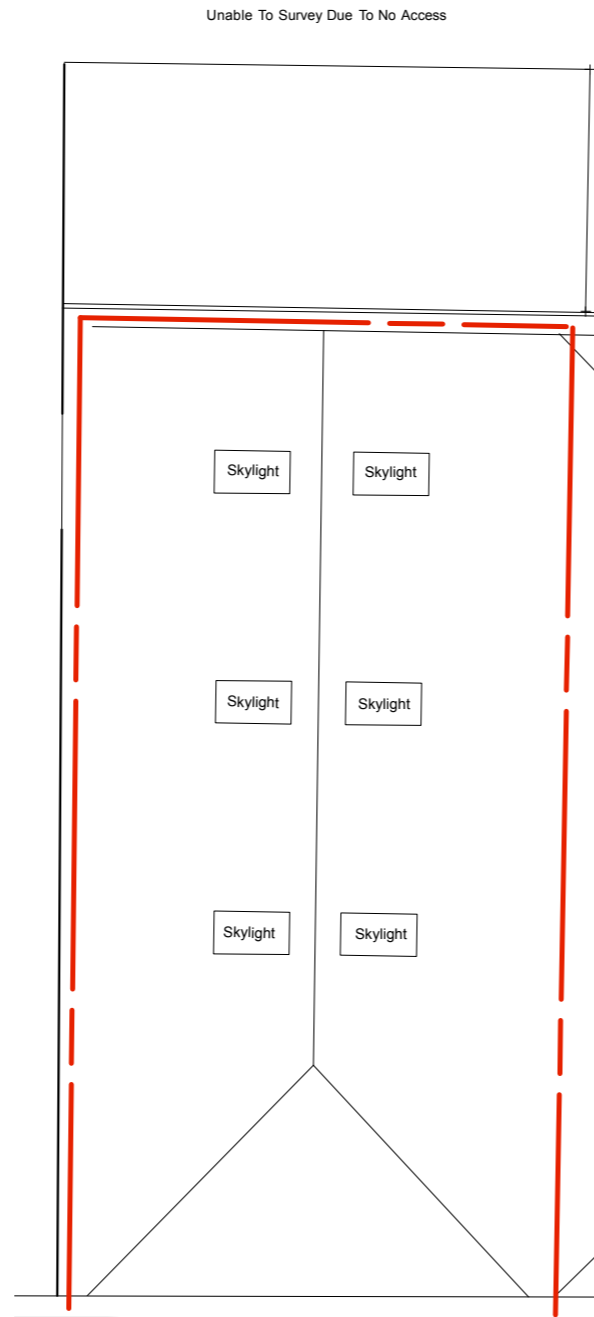
**HUGH CULLUM ARCHITECTS LTD** 26 King's Mews  
 Bloomsbury Design  
 61b Judd Street  
 London WC1H 9QT  
 t 020 7383 7647  
 f 020 7387 7645  
 mail@hughcullum.com

**Planning Application**  
 Proposed  
 Basement and Ground Floor Plans  
 1:100@A3 January 2016  
**KM26-P101( )**

General Notes  
All dimensions to be verified on site  
To be read in conjunction with all relevant documents  
In the event of discrepancy notify the Architect immediately  
This document is copyright of Hugh Cullum Architects Ltd

Issue Status  
SK Information F Feasibility D Design  
P Permissions S Scheme T Tender  
C Construction E Existing Condition

--- Site boundary



**ROOF PLAN**

(.): Issued for Planning Application (16.03.16/MS)

Revision: Information (date/drawn by)

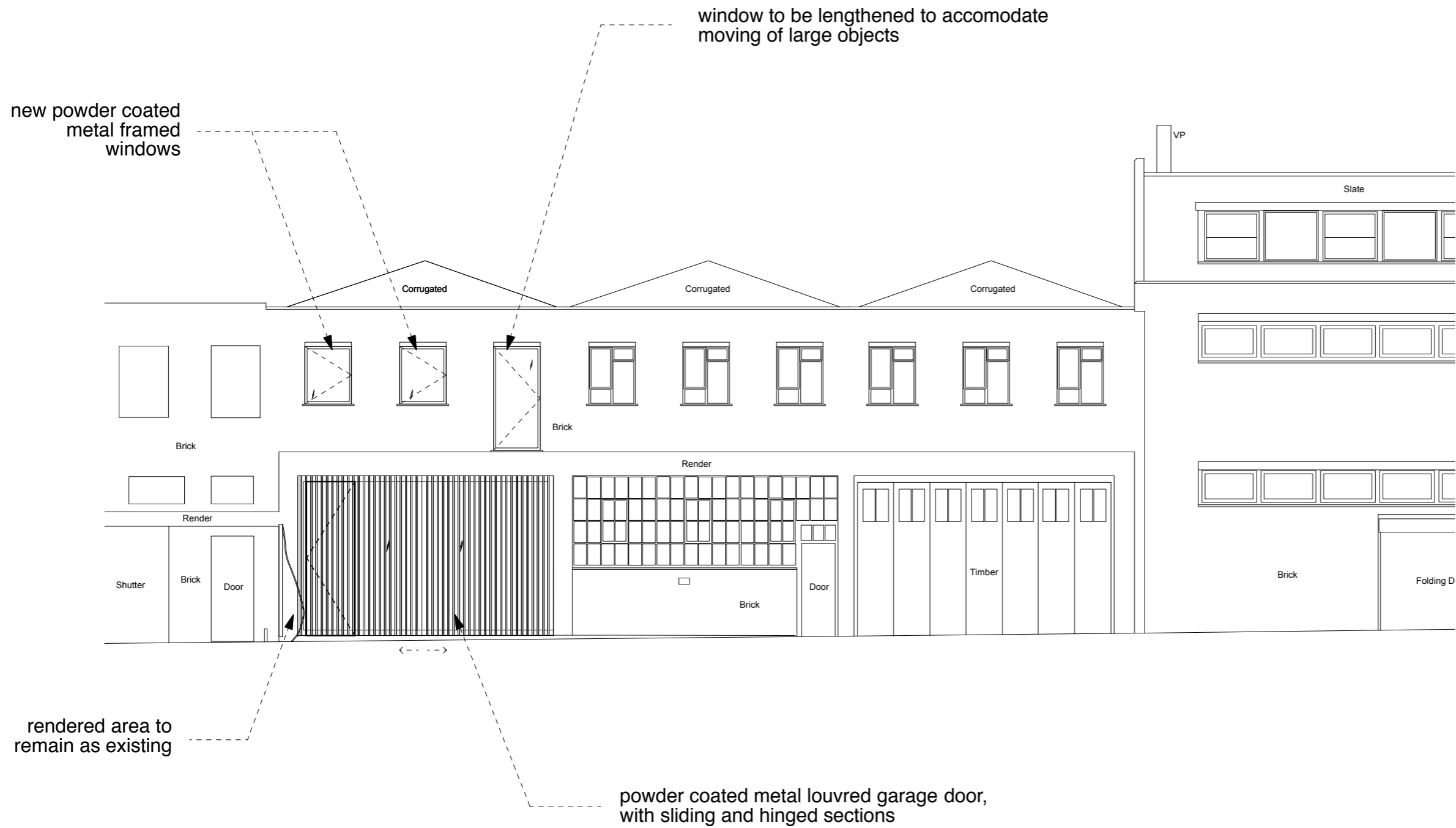


**HUGH CULLUM** 26 King's Mews  
ARCHITECTS LTD  
Bloomsbury Design  
61b Judd Street  
London WC1H 9QT  
t 020 7383 7647  
f 020 7387 7645  
mail@hughcullum.com

**Planning Application**  
Proposed  
Roof Plan  
1:100@A3 January 2016  
**KM26-P102(.)**

**General Notes**  
 All dimensions to be verified on site  
 To be read in conjunction with all relevant documents  
 In the event of discrepancy notify the Architect immediately  
 This document is copyright of Hugh Cullum Architects Ltd

**Issue Status**  
 SK Information F Feasibility D Design  
 P Permissions S Scheme T Tender  
 C Construction E Existing Condition



(.): Issued for Planning Application (16.03.16/MS)

Revision: Information (date/drawn by)

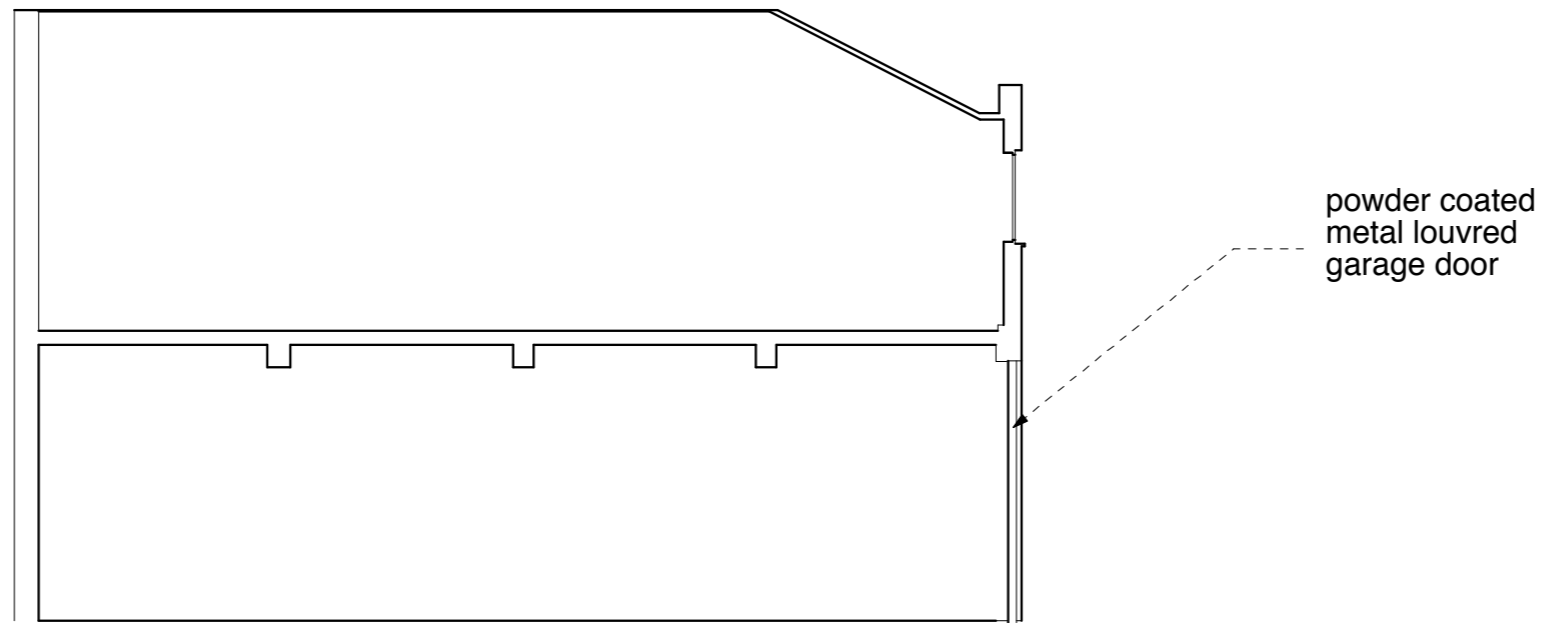


**HUGH CULLUM ARCHITECTS LTD** 26 King's Mews  
 Bloomsbury Design  
 61b Judd Street London WC1H 9QT  
 t 020 7383 7647  
 f 020 7387 7645  
 mail@hughcullum.com

**Planning Application**  
 Proposed Front Elevation  
 1:100@A3 January 2016  
**KM26-P103( )**

General Notes  
All dimensions to be verified on site  
To be read in conjunction with all relevant documents  
In the event of discrepancy notify the Architect immediately  
This document is copyright of Hugh Cullum Architects Ltd

Issue Status  
SK Information F Feasibility D Design  
P Permissions S Scheme T Tender  
C Construction E Existing Condition



**SECTION AA**

(.): Issued for Planning Application (16.03.16/MS)

Revision: Information (date/drawn by)



**HUGH CULLUM** 26 King's Mews  
ARCHITECTS LTD  
Bloomsbury Design  
61b Judd Street  
London WC1H 9QT  
t 020 7383 7647  
f 020 7387 7645  
mail@hughcullum.com

**Planning Application**  
Proposed  
Section AA  
1:100@A3 January 2016  
**KM26-P104( )**