

General Notes
All dimensions to be verified on site
To be read in conjunction with all relevant documents
In the event of discrepancy notify the Architect immediately
This document is copyright of Hugh Cullum Architects Ltd

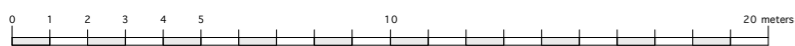
Issue Status
SK Information F Feasibility D Design
P Permissions S Scheme T Tender
C Construction E Existing Condition

--- Site boundary



(.): Issued for Planning Application (16.03.16/MS)

Revision: Information (date/drawn by)



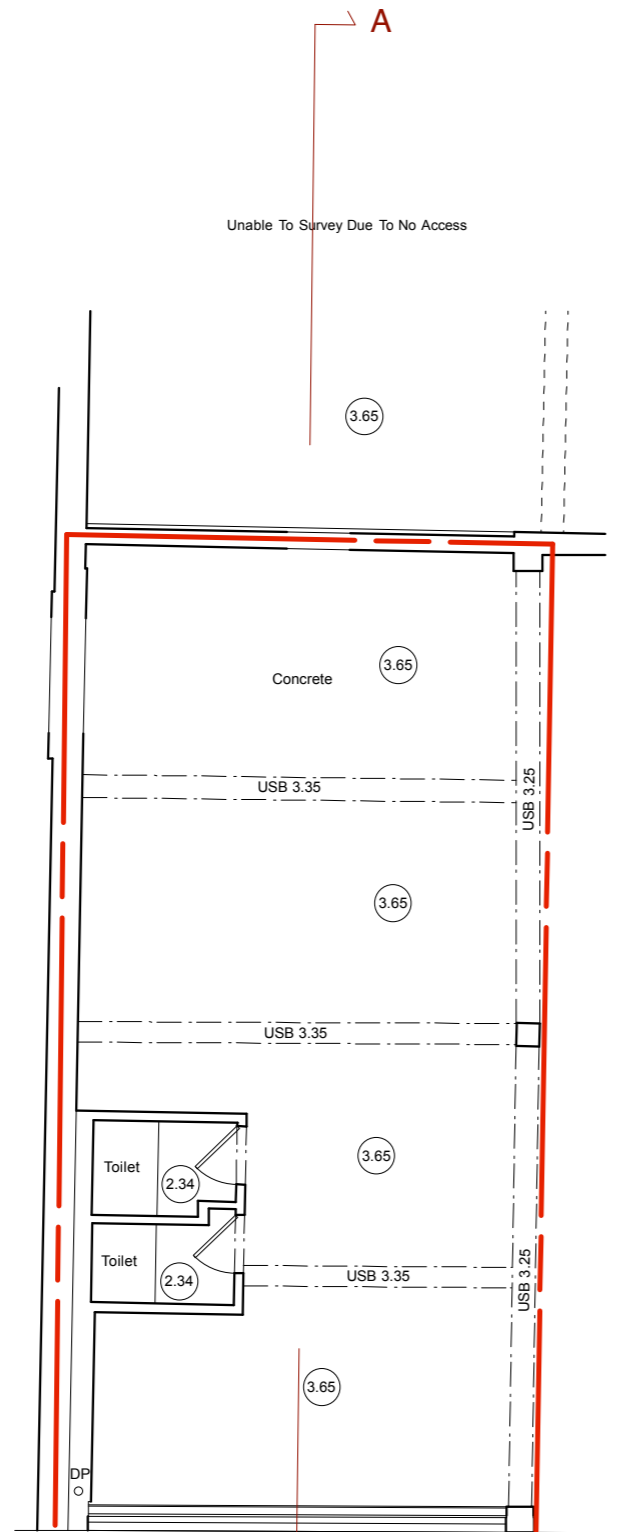
HUGH CULLUM ARCHITECTS LTD
Bloomsbury Design
61b Judd Street
London WC1H 9QT
t 020 7383 7647
f 020 7387 7645
mail@hughcullum.com

26 King's Mews
Planning Application
Existing
Site Plan
1:200@A3 January 2016
KM26-P002()

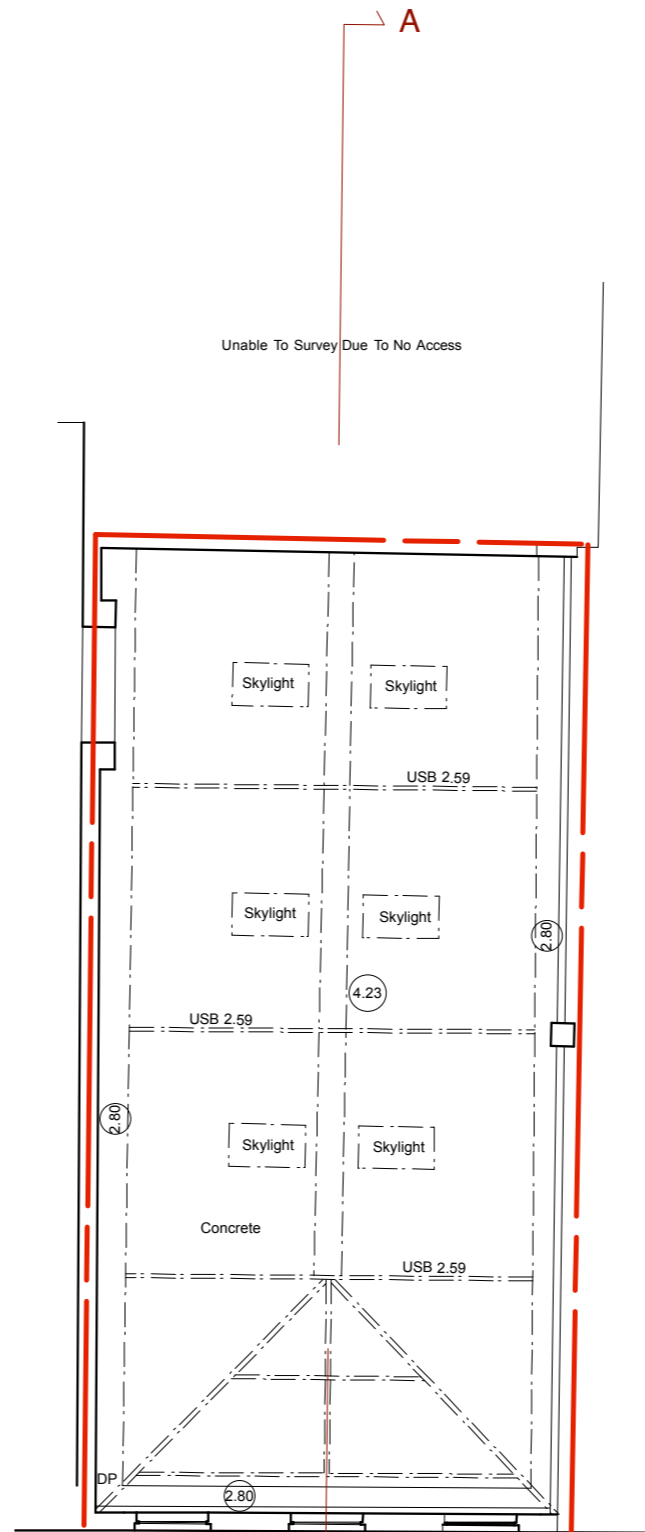
General Notes
 All dimensions to be verified on site
 To be read in conjunction with all relevant documents
 In the event of discrepancy notify the Architect immediately
 This document is copyright of Hugh Cullum Architects Ltd

Issue Status
 SK Information F Feasibility D Design
 P Permissions S Scheme T Tender
 C Construction E Existing Condition

--- Site boundary



GROUND FLOOR PLAN



FIRST FLOOR PLAN



(.): Issued for Planning Application (16.03.16/MS)

Revision: Information (date/drawn by)

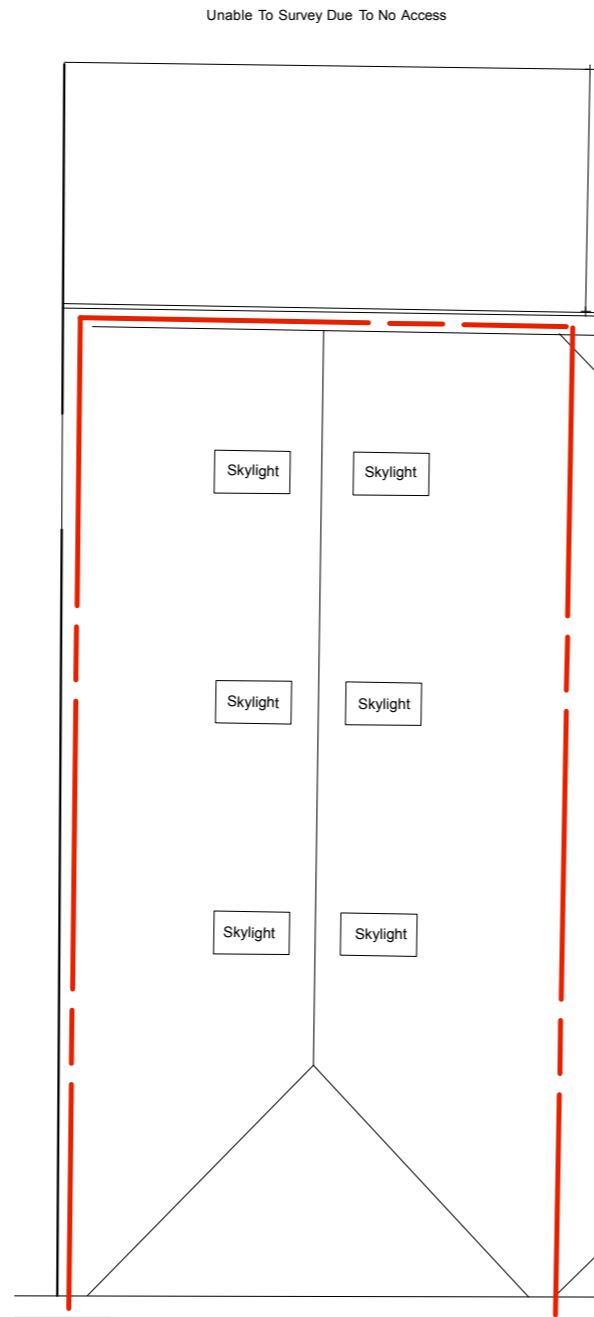
HUGH CULLUM ARCHITECTS LTD 26 King's Mews
 Bloomsbury Design
 61b Judd Street
 London WC1H 9QT
 t 020 7383 7647
 f 020 7387 7645
 mail@hughcullum.com

Planning Application
 Existing
 Basement and Ground Floor Plans
 1:100@A3 January 2016
KM26-P003()

General Notes
 All dimensions to be verified on site
 To be read in conjunction with all relevant documents
 In the event of discrepancy notify the Architect immediately
 This document is copyright of Hugh Cullum Architects Ltd

Issue Status
 SK Information F Feasibility D Design
 P Permissions S Scheme T Tender
 C Construction E Existing Condition

--- Site boundary



ROOF PLAN

(.): Issued for Planning Application (16.03.16/MS)

Revision: Information (date/drawn by)



HUGH CULLUM ARCHITECTS LTD 26 King's Mews
 Bloomsbury Design
 61b Judd Street London WC1H 9QT
 t 020 7383 7647 f 020 7387 7645
 mail@hughcullum.com
Planning Application
 Existing Roof Plan
 1:100@A3 December 2015
KM26-P004(.)

General Notes
 All dimensions to be verified on site
 To be read in conjunction with all relevant documents
 In the event of discrepancy notify the Architect immediately
 This document is copyright of Hugh Cullum Architects Ltd

Issue Status
 SK Information F Feasibility D Design
 P Permissions S Scheme T Tender
 C Construction E Existing Condition



(.): Issued for Planning Application (16.03.16/MS)
 Revision: Information (date/drawn by)

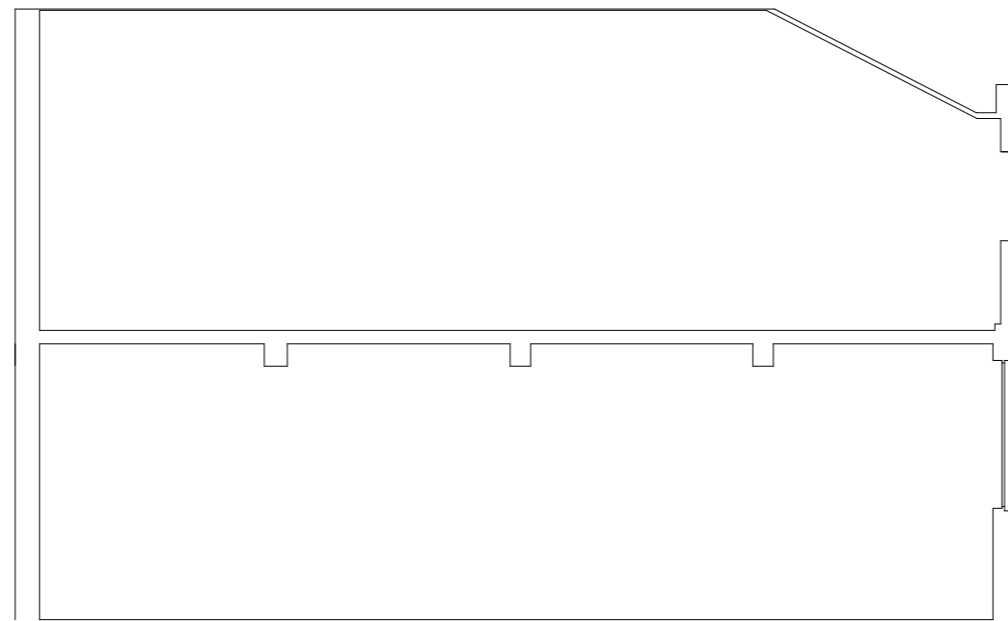


HUGH CULLUM ARCHITECTS LTD
 Bloomsbury Design
 61b Judd Street
 London WC1H 9QT
 t 020 7383 7647
 f 020 7387 7645
 mail@hughcullum.com

26 King's Mews
Planning Application
 Existing
 Front Elevation
 1:100@A3 September 2015
KM26-P005()

General Notes
All dimensions to be verified on site
To be read in conjunction with all relevant documents
In the event of discrepancy notify the Architect immediately
This document is copyright of Hugh Cullum Architects Ltd

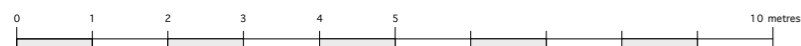
Issue Status
SK Information F Feasibility D Design
P Permissions S Scheme T Tender
C Construction E Existing Condition



SECTION AA

(.): Issued for Planning Application (16.03.16/MS)

Revision: Information (date/drawn by)



HUGH CULLUM 26 King's Mews
ARCHITECTS LTD
Bloomsbury Design
61b Judd Street
London WC1H 9QT
t 020 7383 7647
f 020 7387 7645
mail@hughcullum.com

Planning Application
Existing
Section AA
1:100@A3 January 2016
KM26-P006()