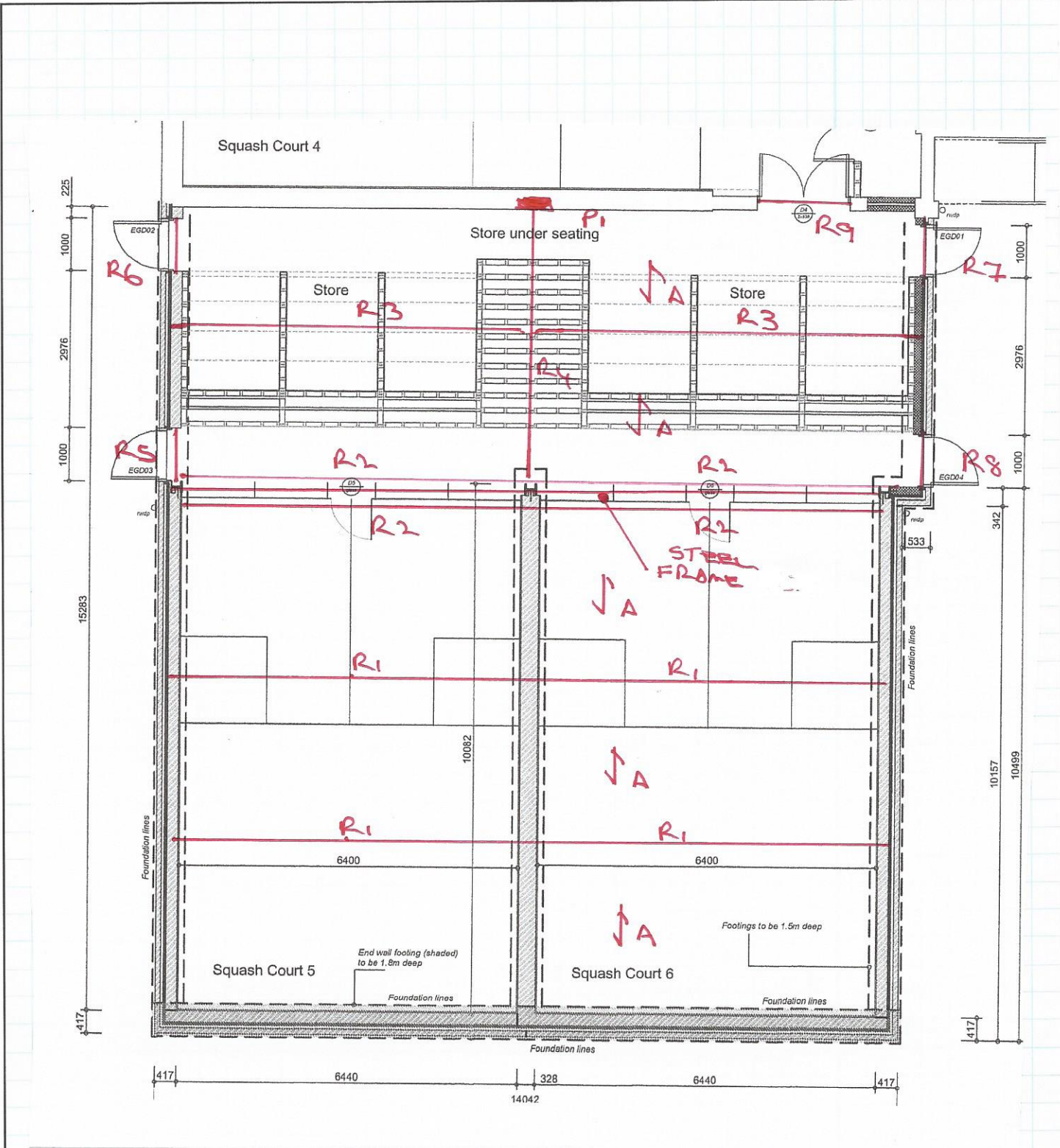




CONTRACT CUMBERLAND CLUB		SHEET PREFIX NO D	
PART OF STRUCTURE ROOF		SHEET NO 1	
BY CJD	DATE Dec 15	JOB REF 0072	REVISION



Summary of structural sizes

Cumberland Club

7trh December 2015

Ref: 8872

Joists ref A	170 x 50 at 400 c/c grade C16 timber
Beam R1	495 x 115 glulam timber
Beam R2	405 x 90 glulam timber
Beam R3	495 x 115 glulam timber
Beam R4	203 x 203 x 46 UC ult reaction 30 kn
Beam R5	Outer Catnic MBA Inner Catnic CN50C
Beam R6	Outer Catnic MBA Inner Catnic CN50C
Beam R7	Outer Catnic MBA Inner Catnic CN50C
Beam R8	Outer Catnic MBA Inner Catnic CN50C
Beam R9	Catnic CG90/125 (pending check on wall dimensions on site)
Beam R6	2 no 178 x 102 x 19 UB with 100mm bearings
Column	203 x 203 x 46 UC galv Base plate 400 x 400 x 20 6mm filet weld all round 4 M16 (4.6) bolts set in 40mm from edge of plate and set into concrete 300mm with 100 x 100 x 15 washer plates
Beam between columns	203 x 203 x 46 UC

Connection beam to columns

Ult moment 20 knm

Ult shear 10 kn

Ult compression 5 kn

Padstone P1

215 x 100 x 150 deep concrete padstone