

All dimensions to be verified on site
To be read in conjunction with all relevant documents
In the event of discrepancy notify the Architect immediately
This document is copyright of Hugh Cullum Architects Ltd

Issue Status			
SK	Information	F Feasibility	D Design
P	Permissions	S Scheme	T Tender
C	Construction	E Existing Condition	



(C): New conservation rooflights (14.03.16/MS)
(B) Extension height is lowered, where visible from the street, wall changed to brick, glass lantern replaced with glass roof at West end (10.03.15/YH)
(A) Design revised (19.02.15/YH)
(_) Issued for Planning (24.12.14/YH)
Revision: Information (date/drawn by)

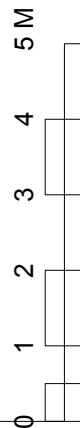
23 Three Cups Yard

Proposed
Flat 23 Floor Plan
1:100@A3 March 2016

OSP23-P20(C)

All dimensions to be verified on site
To be read in conjunction with all relevant documents
In the event of discrepancy notify the Architect immediately
This document is copyright of Hugh Cullum Architects Ltd

Issue Status	
SK	Information F Feasibility D Design
P	Permissions S Scheme T Tender
C	Construction E Existing Condition



(C): New conservation rooflights (14.03.16/MS)
(B) Extension height is lowered, where visible from the street, wall changed to brick, glass lantern replaced with glass roof at West end (10.03.15/YH)
(A) Design revised (19.02.15/YH)
(_) Issued for Planning (24.12.14/YH)
Revision: Information (date/drawn by)

23 Three Cups Yard

Proposed
Flat 23 Mezzanine Plan
1:100@A3 February 2016

OSP23-P021(C)

General Notes

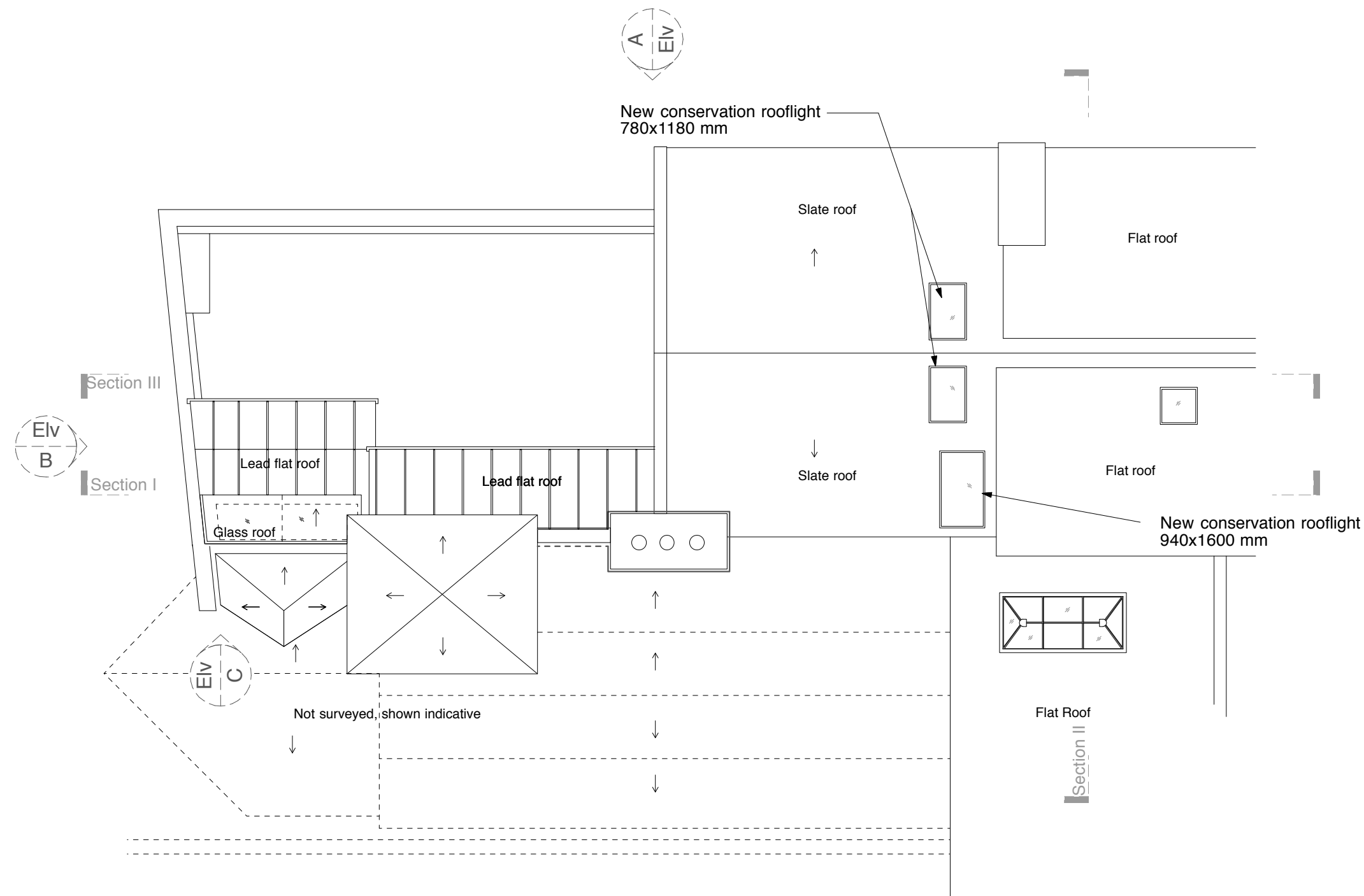
All dimensions to be verified on site
To be read in conjunction with all relevant documents
In the event of discrepancy notify the Architect immediately
This document is copyright of Hugh Cullum Architects Ltd

Issue Status

SK	Information	F	Feasibility	D	Design
P	Permissions	S	Scheme	T	Tender
C	Construction	E	Existing Condition		

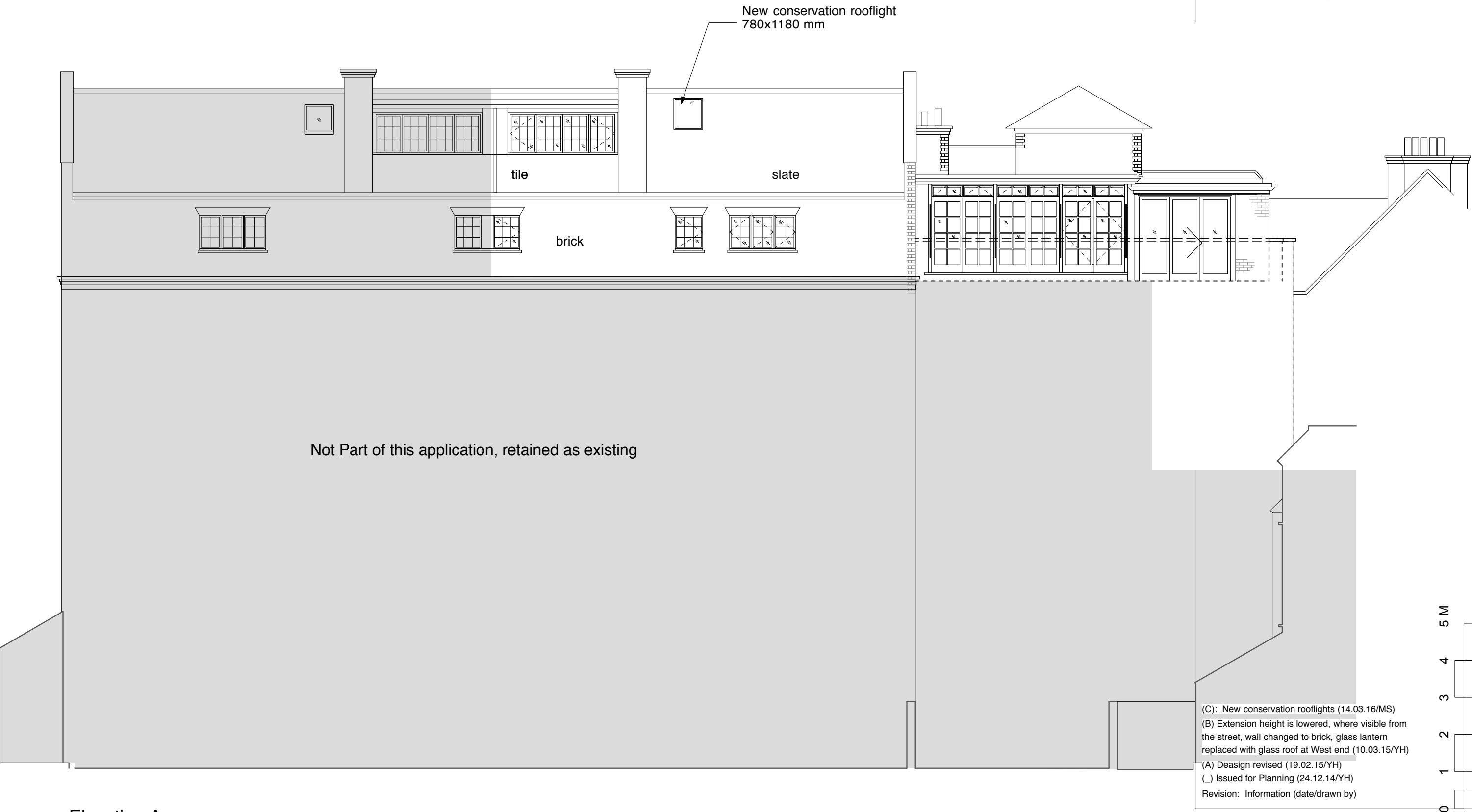
DRAWING KEY

(C): New conservation rooflights (08.03.16/MS)
(B) Extension height is lowered, where visible from the street, wall changed to brick, glass lantern replaced with glass roof at West end (10.03.15/YH)
(A) Design revised (19.02.15/YH)
(_) Issued for Planning (24.12.14/YH)
Revision: Information (date/drawn by)



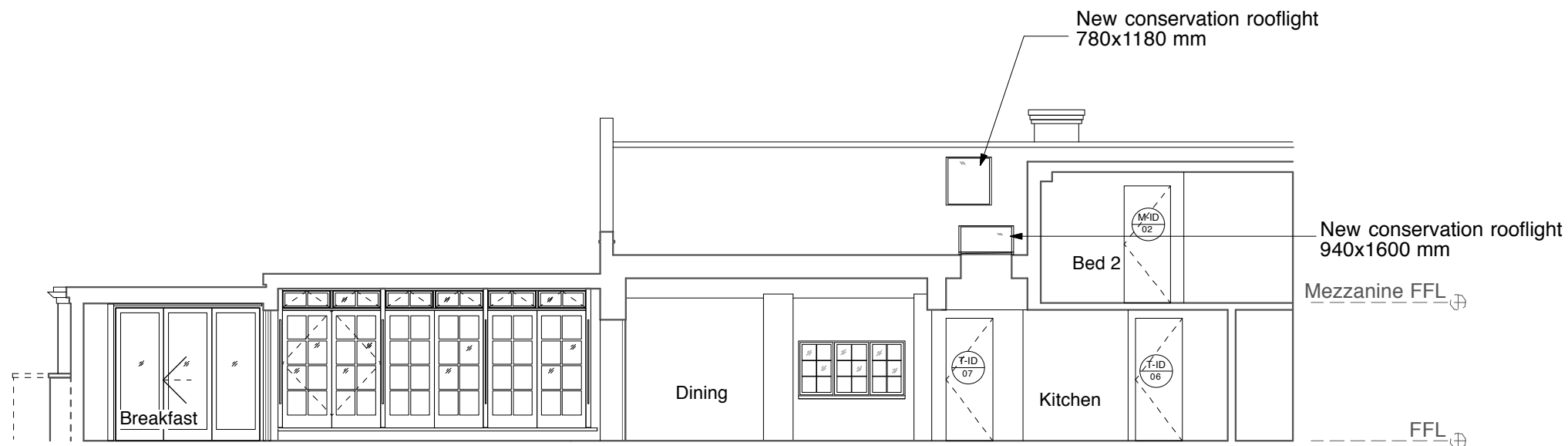
General Notes
Do not scale from this drawing
All dimensions to be verified on site
To be read in conjunction with all relevant documents
In the event of discrepancy notify the Architect immediately
This document is copyright of Hugh Cullum Architects Ltd

Issue Status
SK Information F Feasibility D Design
P Permissions S Scheme T Tender
C Construction E Existing Condition

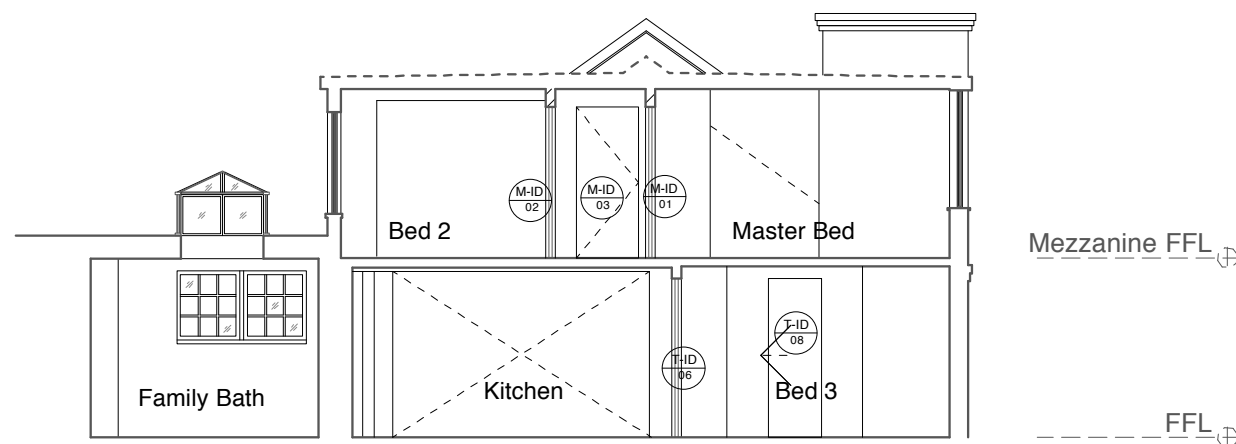


(C): New conservation rooflights (14.03.16/MS)
(B) Extension height is lowered, where visible from the street, wall changed to brick, glass lantern replaced with glass roof at West end (10.03.15/YH)
(A) Deesign revised (19.02.15/YH)
(_) Issued for Planning (24.12.14/YH)
Revision: Information (date/drawn by)

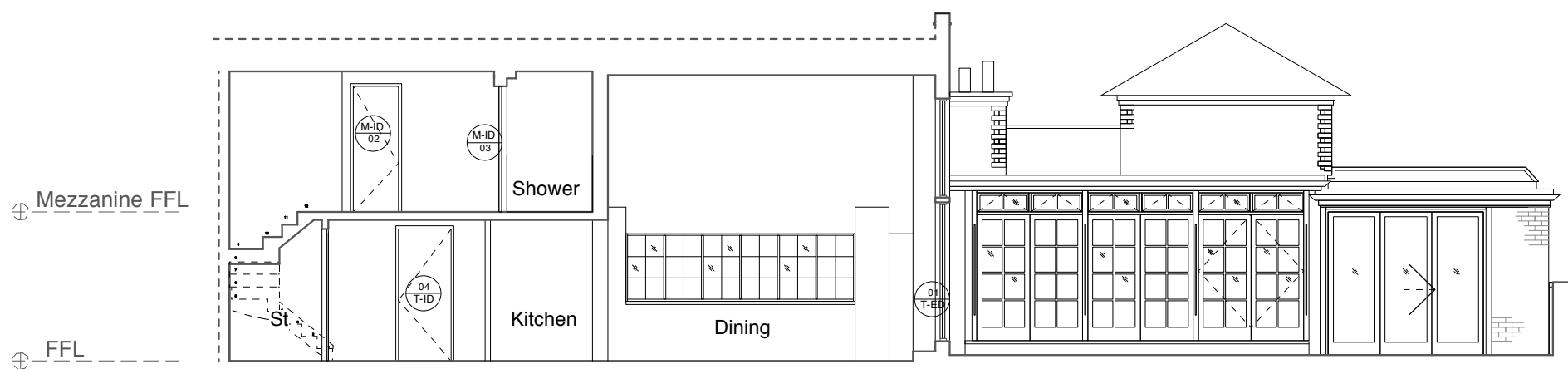
Elevation A



Section I



Section II



Section III

General Notes
Do not scale from this drawing
All dimensions to be verified on site
To be read in conjunction with all relevant documents
In the event of discrepancy notify the Architect immediately
This document is copyright of Hugh Cullum Architects Ltd

Issue Status
SK Information F Feasibility D Design
P Permissions S Scheme T Tender
C Construction E Existing Condition

DRAWING KEY

(C): New conservation rooflights (14.03.16/MS)
(B) Extension height is lowered, where visible from the street, wall changed to brick, glass lantern replaced with glass roof at West end (10.03.15/YH)
(A) Deasign revised (19.02.15/YH)
(_) Issued for Planning (24.12.14/YH)
Revision: Information (date/drawn by)

HUGH CULLUM
ARCHITECTS LTD
Bloomsbury Design
61b Judd Street
London WC1H 9QT
t 020 7383 7647
f 020 7387 7645
mail@hughcullum.com

23 Three Cups Yard

Proposed
Flat 23 Section I, II & III
1:100@A3 March 2016

OSP23-P025(C)

