
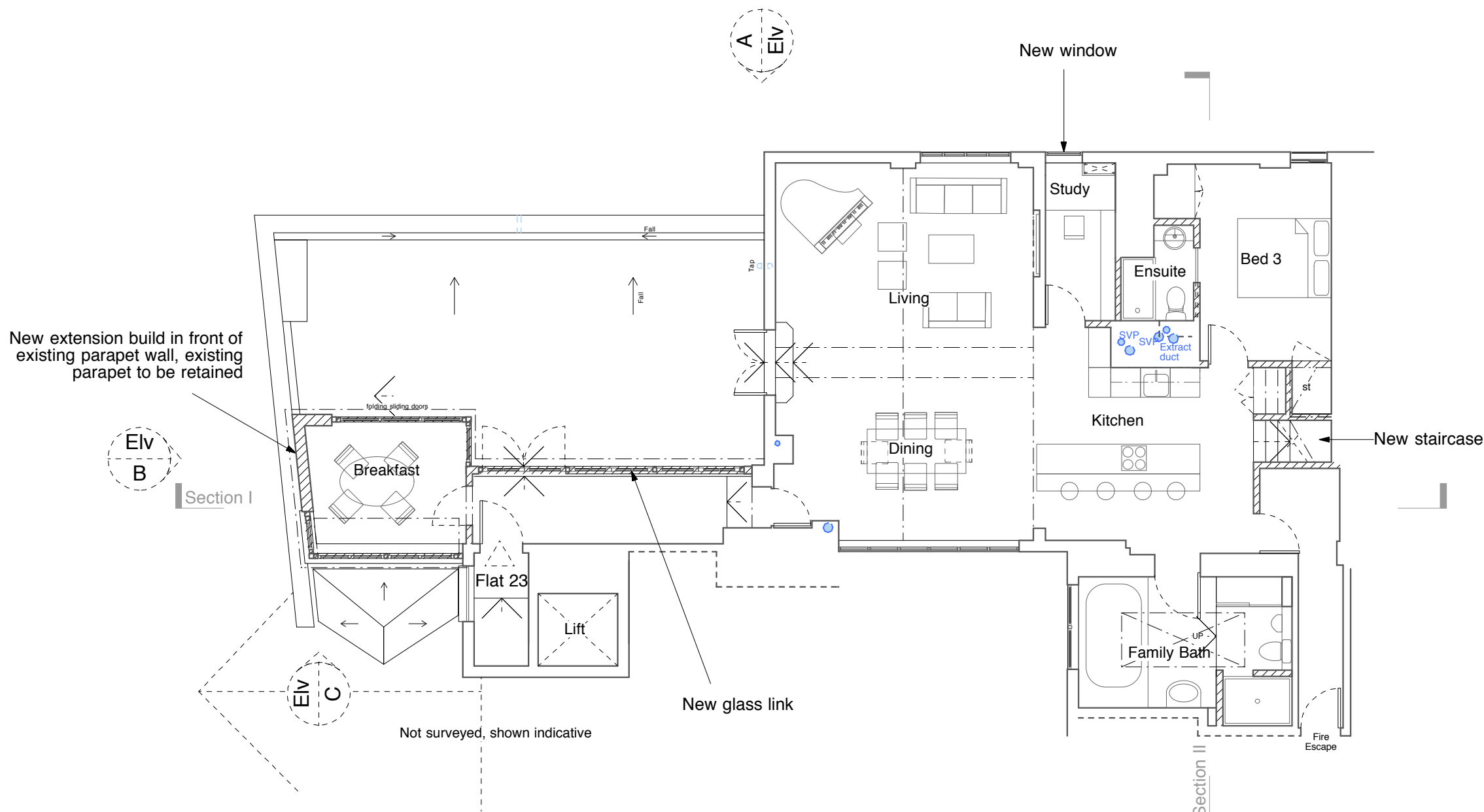
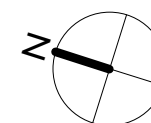


General Notes
This drawing is for Planning application only
All dimensions to be verified on site
To be read in conjunction with all relevant documents
In the event of discrepancy notify the Architect immediately
This document is copyright of Hugh Cullum Architects Ltd

SK	Information	F	Feasibility	D	Design
P	Permissions	S	Scheme	T	Tender
C	Construction	E	Existing Condition		

DRAWING KEY

☐ Existing construction

 Proposed construction

(B) Extension height is lowered, where visible from the street, wall changed to brick, glass lantern replaced with glass roof at West end (10.03.15/YH)

(A) Deasign revised (19.02.15/YH)

(_) Issued for Planning (24.12.14/YH)

Revision: Information (date/drawn by)

HUGH CULLUM
ARCHITECTS LTD
Bloomsbury Design
61b Judd Street
London WC1H 9QT
t 020 7383 7647
f 020 7387 7645
mail@hughcullum.com

23 Three Cups Yard

Approved app.no.2014/7970/P

Flat 23 Floor Plan

1:100@A3 December 2014

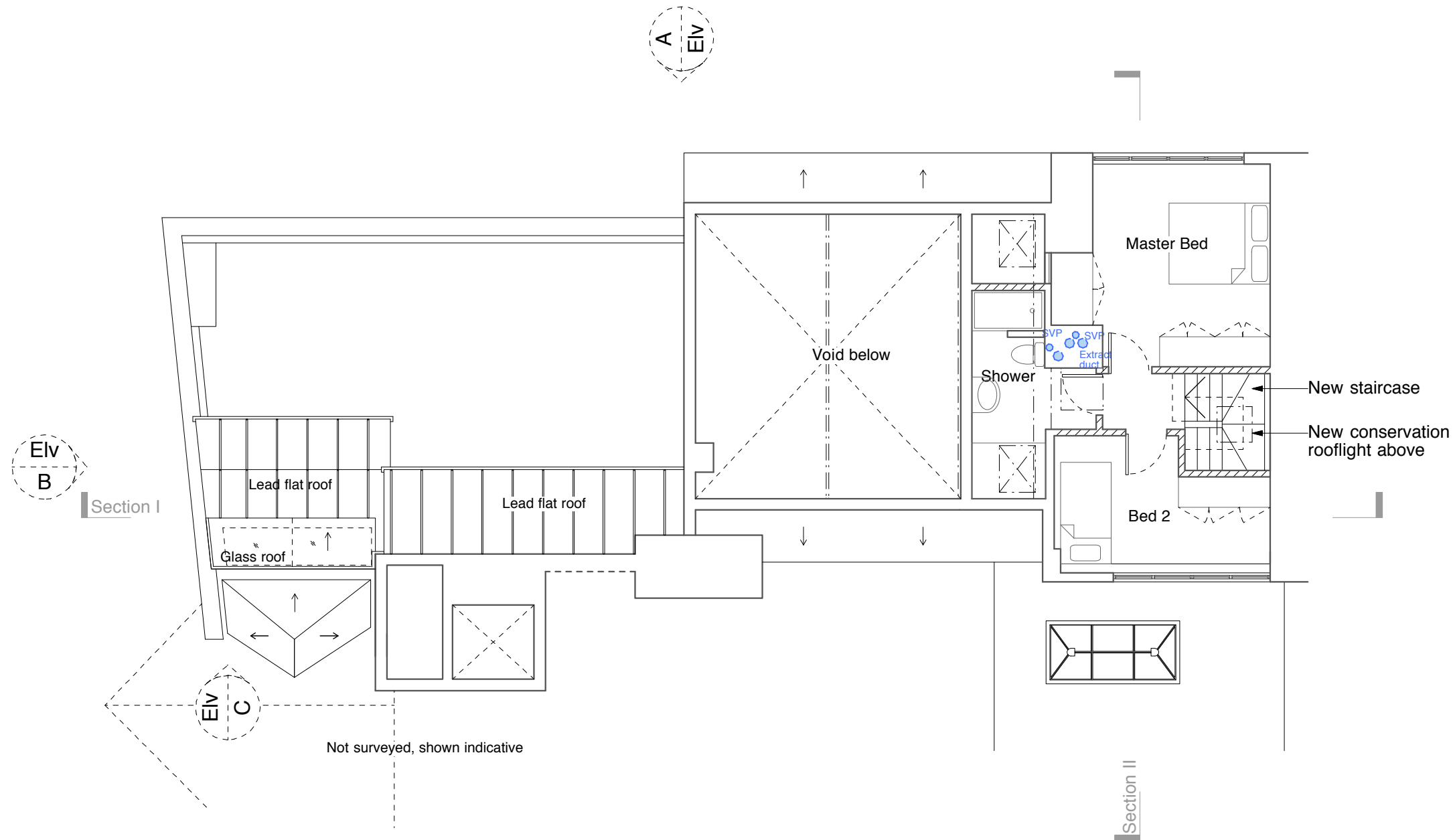
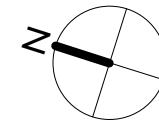
OSP23-P020(B)

General Notes
 This drawing is for Planning application only
 All dimensions to be verified on site
 To be read in conjunction with all relevant documents
 In the event of discrepancy notify the Architect immediately
 This document is copyright of Hugh Cullum Architects Ltd

Issue Status
 SK Information F Feasibility D Design
 P Permissions S Scheme T Tender
 C Construction E Existing Condition

DRAWING KEY

- Existing construction
 Proposed construction



(B) Extension height is lowered, where visible from the street, wall changed to brick, glass lantern replaced with glass roof at West end (10.03.15/YH)
 (A) Deesign revised (19.02.15/YH)
 (..) Issued for Planning (24.12.14/YH)
 Revision: Information (date/drawn by)


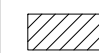
HUGH CULLUM
 ARCHITECTS LTD
 Bloomsbury Design
 61b Judd Street
 London WC1H 9QT
 t 020 7383 7647
 f 020 7387 7645
 mail@hughcullum.com

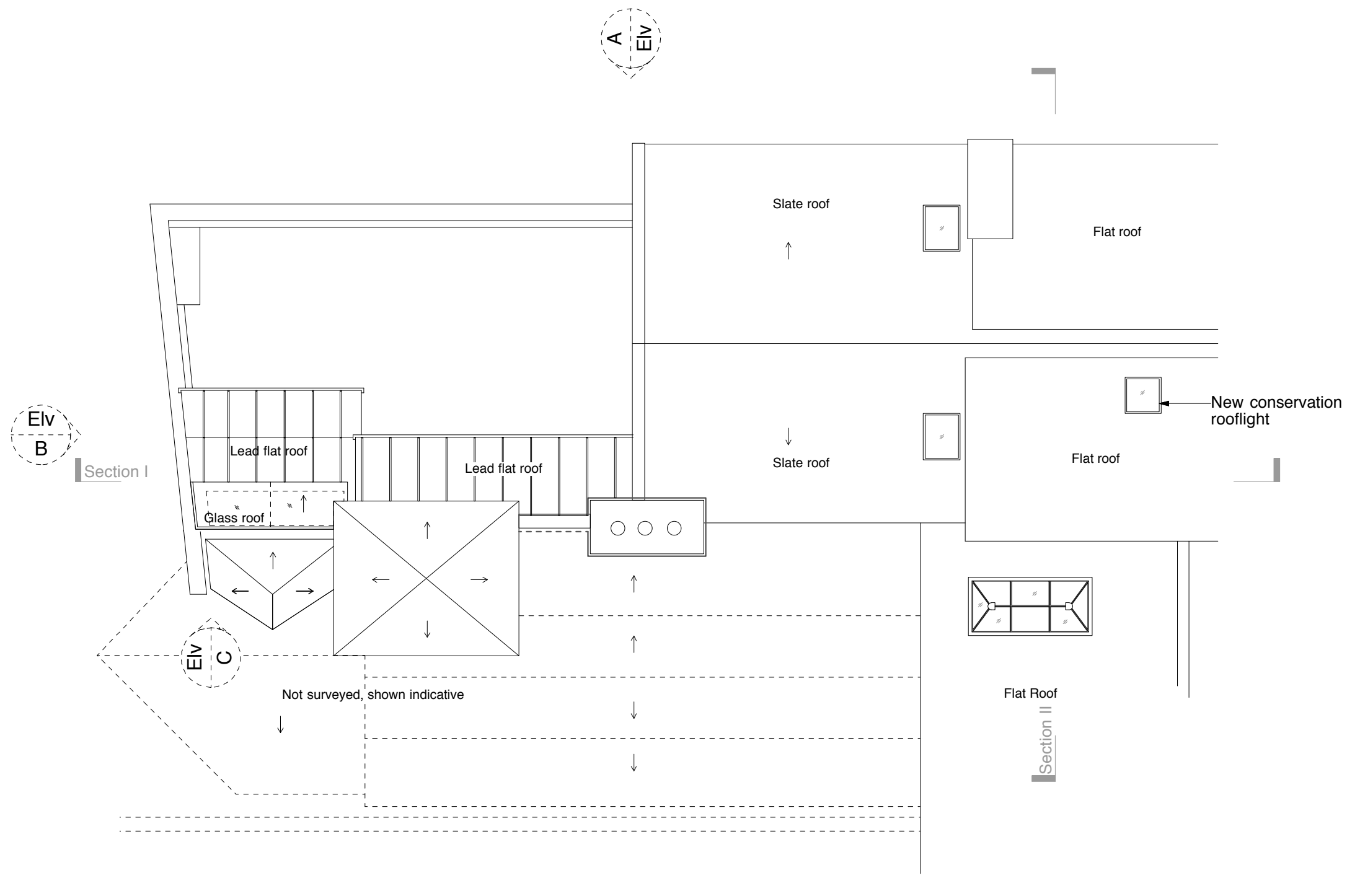
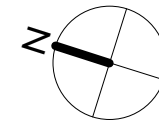
23 Three Cups Yard
 Approved app.no.2014/7970/P
 Flat 23 Mezzanine Plan
 1:100@A3 December 2014
 OSP23-P021(B)

General Notes
This drawing is for Planning application only
All dimensions to be verified on site
To be read in conjunction with all relevant documents
In the event of discrepancy notify the Architect immediately
This document is copyright of Hugh Cullum Architects Ltd

Issue Status
SK Information F Feasibility D Design
P Permissions S Scheme T Tender
C Construction E Existing Condition

DRAWING KEY

-  Existing construction
 Proposed construction



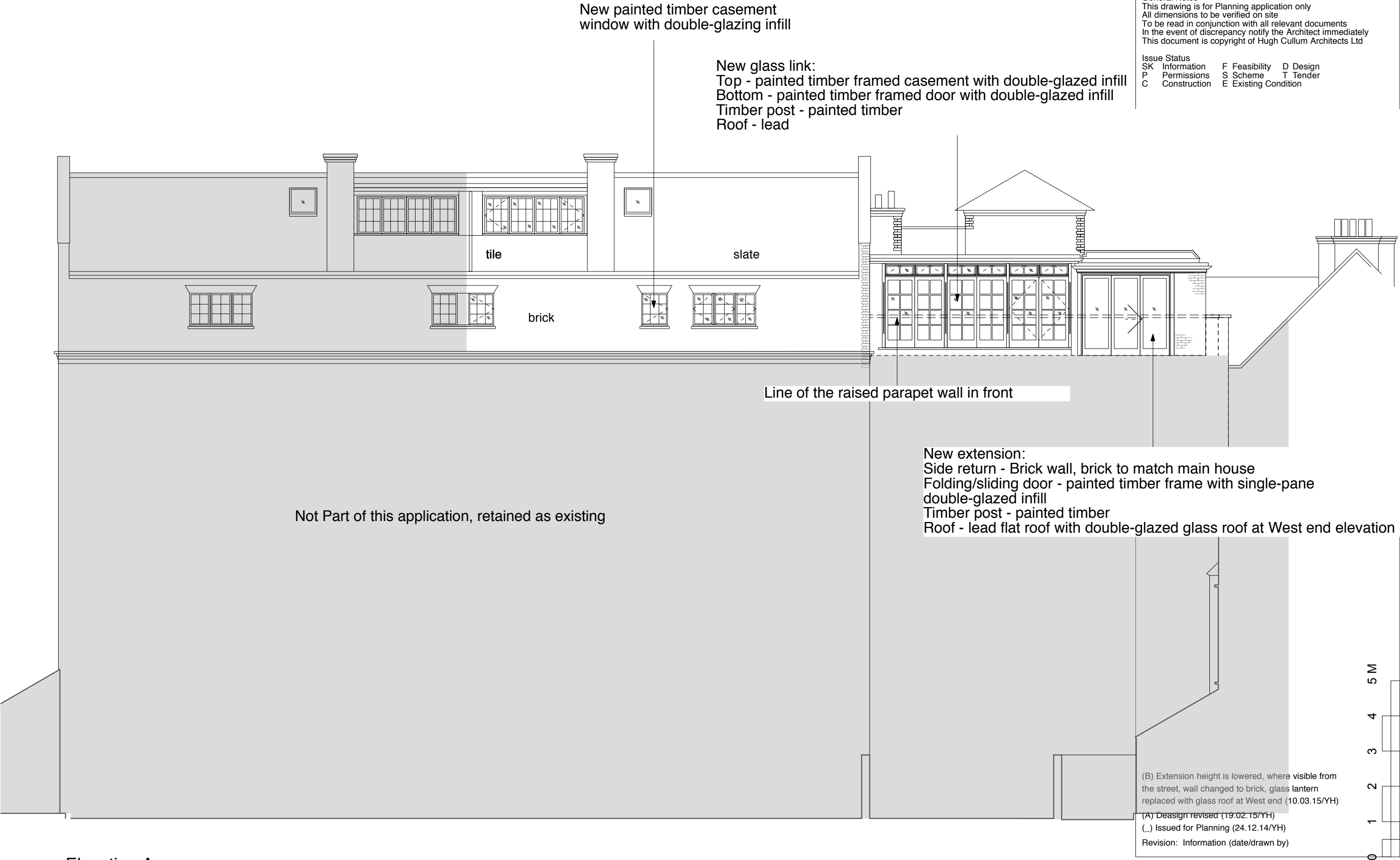
(B) Extension height is lowered, where visible from the street, wall changed to brick, glass lantern replaced with glass roof at West end (10.03.15/YH)
(A) Deesign revised (19.02.15/YH)
(_) Issued for Planning (24.12.14/YH)
Revision: Information (date/drawn by)

HUGH CULLUM
ARCHITECTS LTD
Bloomsbury Design
61b Judd Street
London WC1H 9QT
t 020 7383 7647
f 020 7387 7645
mail@hughcullum.com

23 Three Cups Yard
Approved app.no.2014/7970/P
Flat 23 Roof Plan
1:100@A3 December 2014
OSP23-P022(B)

General Notes
This drawing is for Planning application only
All dimensions to be verified on site
To be read in conjunction with all relevant documents
In the event of discrepancy notify the Architect immediately
This document is copyright of Hugh Cullum Architects Ltd

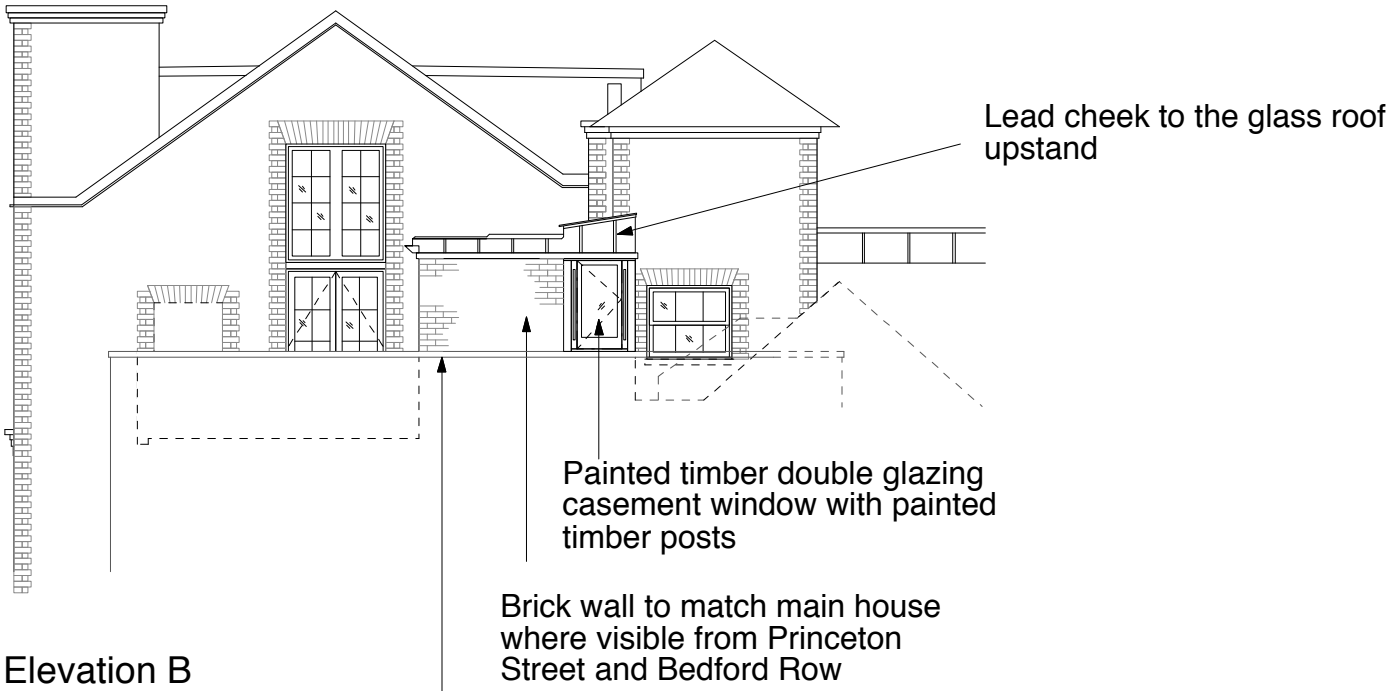
Issue Status
SK Information F Feasibility D Design
P Permissions S Scheme T Tender
C Construction E Existing Condition



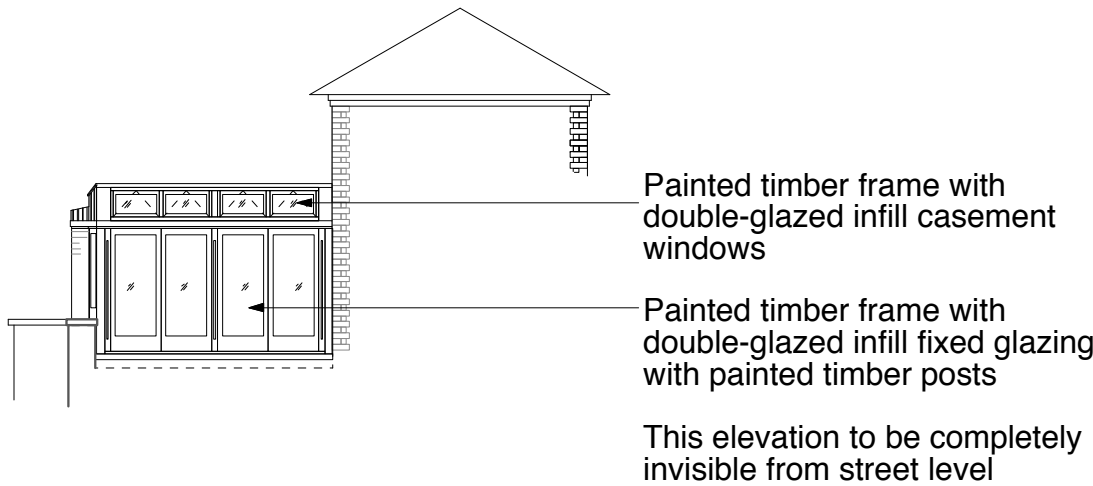
Elevation A

General Notes
This drawing is for Planning application only
All dimensions to be verified on site
To be read in conjunction with all relevant documents
In the event of discrepancy notify the Architect immediately
This document is copyright of Hugh Cullum Architects Ltd

Issue Status		
SK	Information	F Feasibility D Design
P	Permissions	S Scheme T Tender
C	Construction	E Existing Condition



Existing parapet to be retained





(B) Extension height is lowered, where visible from the street, wall changed to brick, glass lantern replaced with glass roof at West end (10.03.15/YH)
(A) Deesign revised (19.02.15/YH)
(_) Issued for Planning (24.12.14/YH)
Revision: Information (date/drawn by)

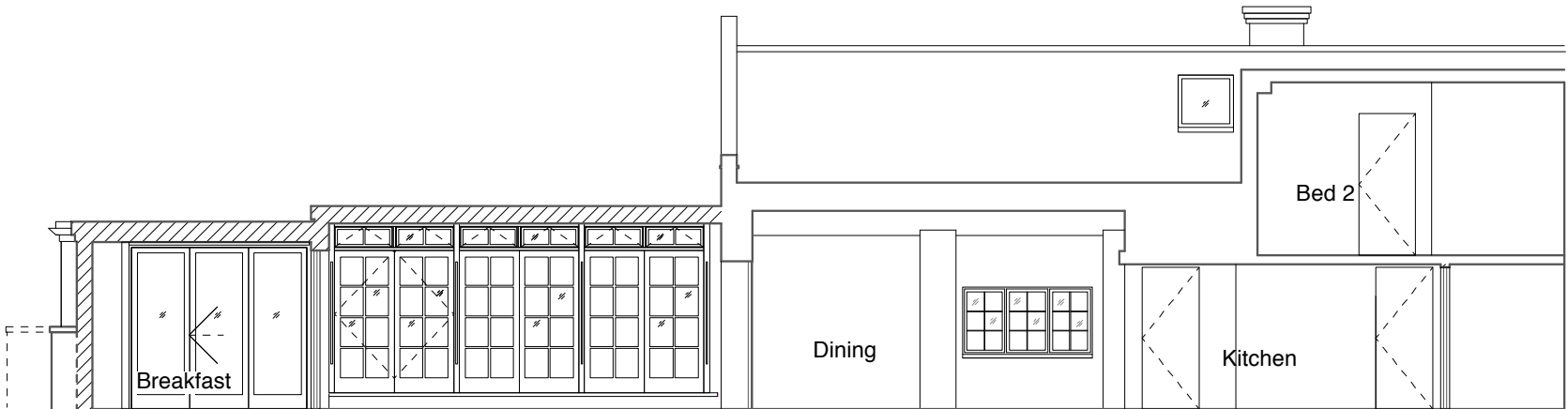
5 M
4
3
2
1
0

General Notes
This drawing is for Planning application only
All dimensions to be verified on site
To be read in conjunction with all relevant documents
In the event of discrepancy notify the Architect immediately
This document is copyright of Hugh Cullum Architects Ltd

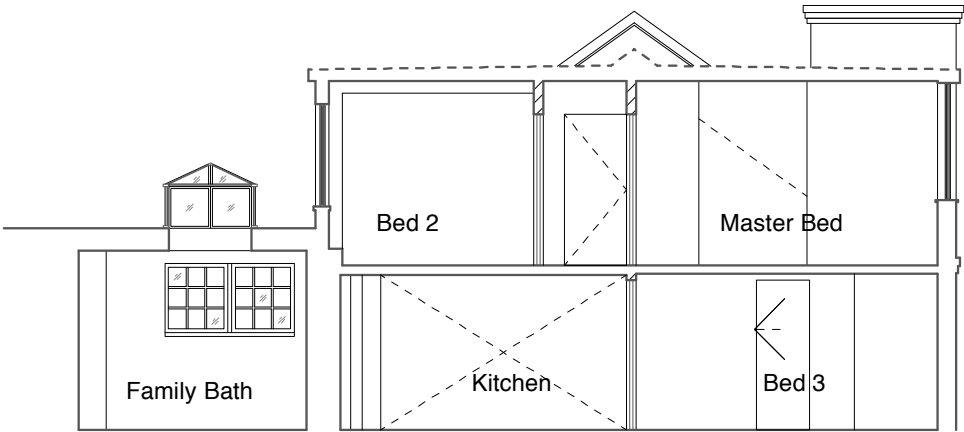
Issue Status
SK Information F Feasibility D Design
P Permissions S Scheme T Tender
C Construction E Existing Condition

DRAWING KEY

-  Existing construction
 Proposed construction



Section I



Section II

(B) Extension height is lowered, where visible from the street, wall changed to brick, glass lantern replaced with glass roof at West end (10.03.15/YH)
(A) Deasign revised (19.02.15/YH)
(_) Issued for Planning (24.12.14/YH)
Revision: Information (date/drawn by)

5 M
4
3
2
1
0