

LEAD FLASHING (BY OTHERS)

LED TROUGH LIGHT TO FACE LIGHT SIGNAGE

SATIN BLACK ALUMINIUM FASCIA. REFER TO GEETEE SIGNS FABRICATION DETAILS

INDIVIDUAL MOUNTED FACE ILLUMINATED (VIA LED TROUGH LIGHT ABOVE) LETTERS SURFACE MOUNTED ON BLACK PANEL BACKGROUND. REFER TO GEETEE SIGNS FABRICATION DETAILS

PAINTED TIMBER FASCIA BOARD WITH INTEGRAL CILL (BY OTHERS)

10.8 CLEAR TOUGHENED LAMINATED GLASS

428
600

HORIZONTAL LED STRIP TAPE LIGHTING APPLIED TO INTERNAL FACE OF SHOPFRONT FRAME

PILASTER (BY OTHERS)

10.8 CLEAR TOUGHENED LAMINATED GLASS

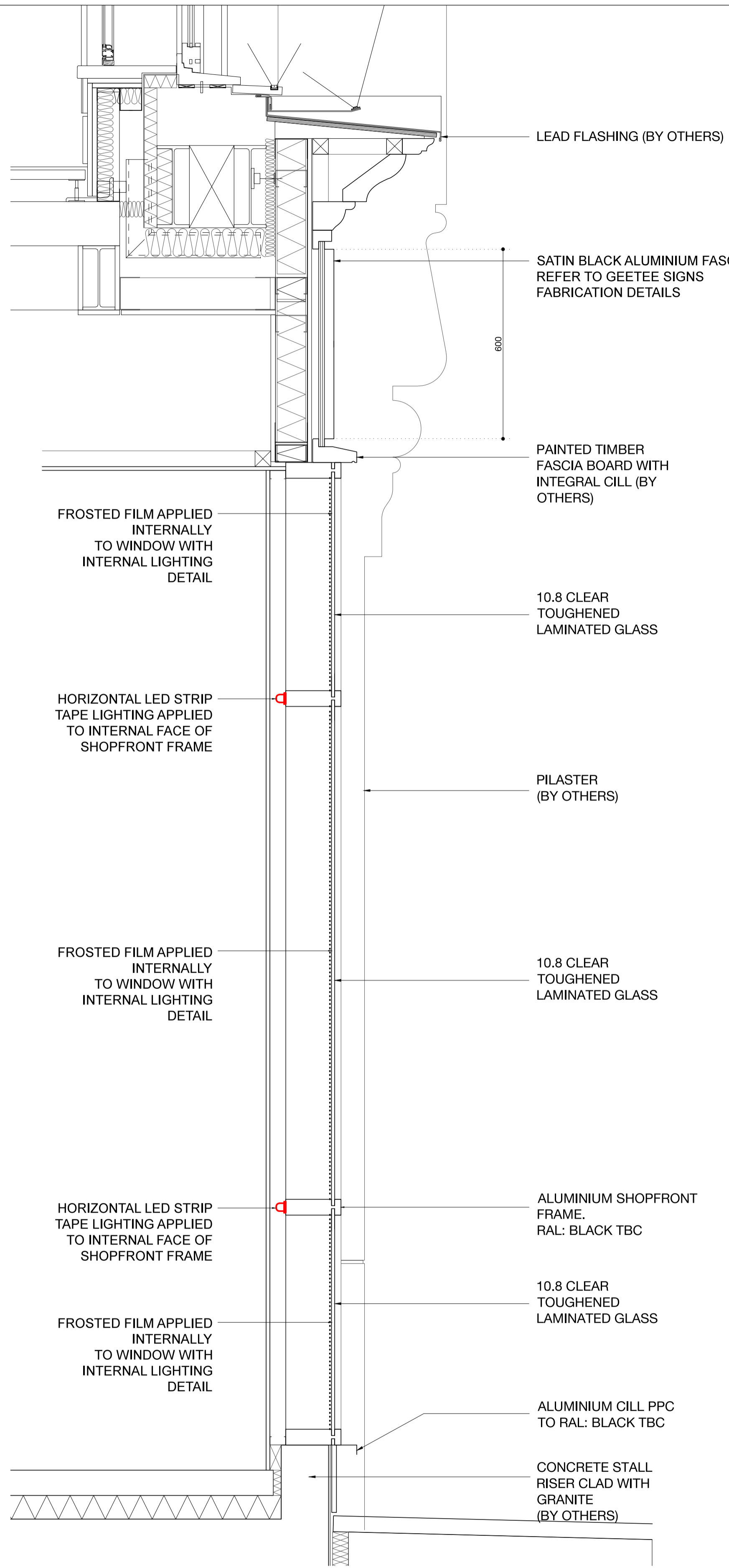
ALUMINIUM SHOPFRONT FRAME. RAL: BLACK TBC

10.8 CLEAR TOUGHENED LAMINATED GLASS

ALUMINIUM CILL PPC TO RAL: BLACK TBC

CONCRETE STALL RISER CLAD WITH GRANITE (BY OTHERS)

01 SECTION THRU GLAZING
SCALE 1:10 @ A1



LEAD FLASHING (BY OTHERS)

SATIN BLACK ALUMINIUM FASCIA. REFER TO GEETEE SIGNS FABRICATION DETAILS

600

PAINTED TIMBER FASCIA BOARD WITH INTEGRAL CILL (BY OTHERS)

FROSTED FILM APPLIED INTERNALLY TO WINDOW WITH INTERNAL LIGHTING DETAIL

10.8 CLEAR TOUGHENED LAMINATED GLASS

HORIZONTAL LED STRIP TAPE LIGHTING APPLIED TO INTERNAL FACE OF SHOPFRONT FRAME

PILASTER (BY OTHERS)

FROSTED FILM APPLIED INTERNALLY TO WINDOW WITH INTERNAL LIGHTING DETAIL

10.8 CLEAR TOUGHENED LAMINATED GLASS

HORIZONTAL LED STRIP TAPE LIGHTING APPLIED TO INTERNAL FACE OF SHOPFRONT FRAME

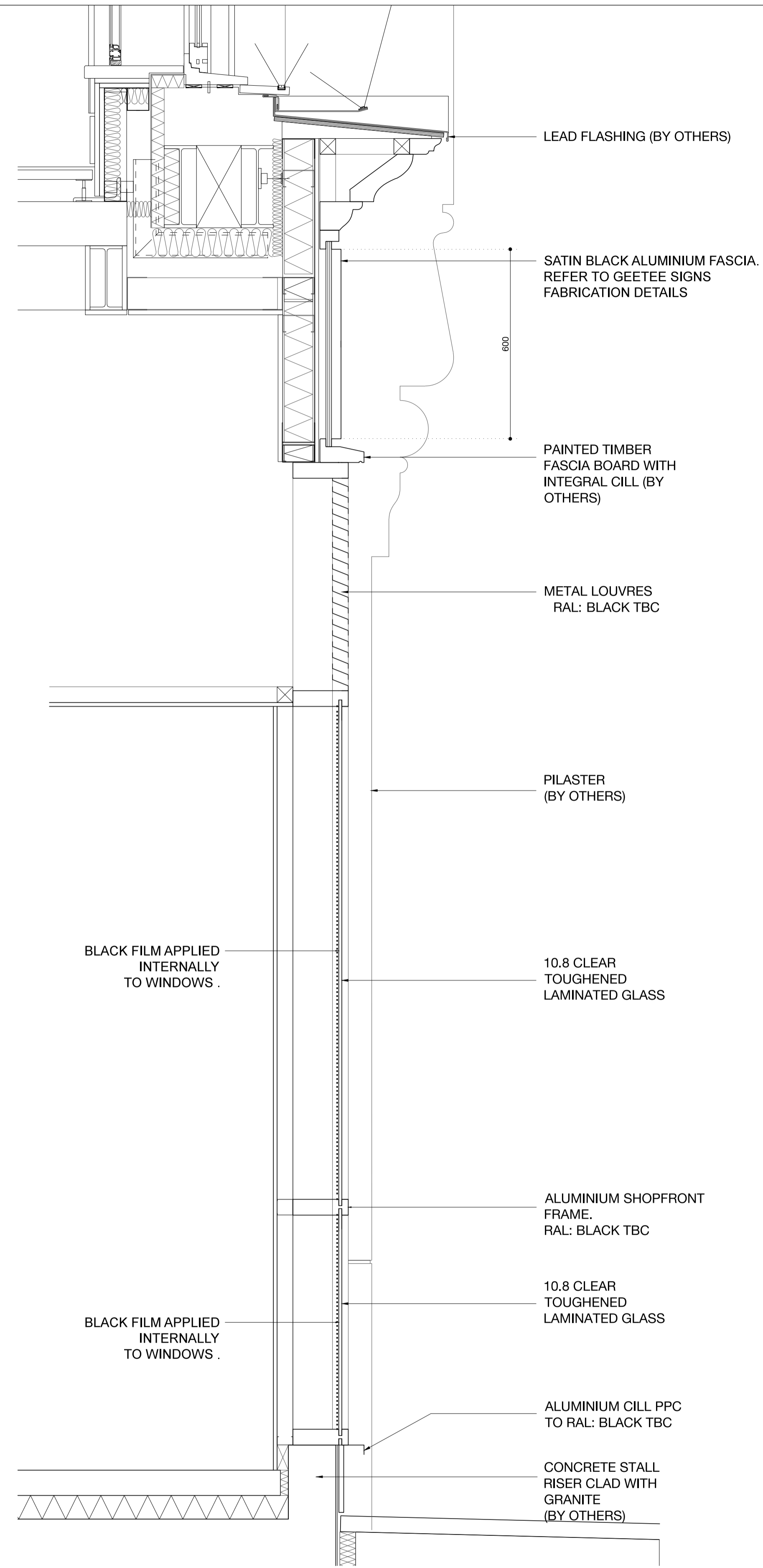
ALUMINIUM SHOPFRONT FRAME. RAL: BLACK TBC

10.8 CLEAR TOUGHENED LAMINATED GLASS

ALUMINIUM CILL PPC TO RAL: BLACK TBC

CONCRETE STALL RISER CLAD WITH GRANITE (BY OTHERS)

02 SECTION THRU GLAZING WITH APPLIED FILM
SCALE 1:10 @ A1



LEAD FLASHING (BY OTHERS)

SATIN BLACK ALUMINIUM FASCIA. REFER TO GEETEE SIGNS FABRICATION DETAILS

600

PAINTED TIMBER FASCIA BOARD WITH INTEGRAL CILL (BY OTHERS)

METAL LOUVRES RAL: BLACK TBC

PILASTER (BY OTHERS)

BLACK FILM APPLIED INTERNALLY TO WINDOWS .

10.8 CLEAR TOUGHENED LAMINATED GLASS

ALUMINIUM SHOPFRONT FRAME. RAL: BLACK TBC

10.8 CLEAR TOUGHENED LAMINATED GLASS

ALUMINIUM CILL PPC TO RAL: BLACK TBC

CONCRETE STALL RISER CLAD WITH GRANITE (BY OTHERS)

03 SECTION THRU LOUVRES
SCALE 1:10 @ A1

NOTES: DO NOT SCALE FROM THIS DRAWING ALL DRAWINGS TO BE CHECKED ON SITE COPYRIGHT PROTECTED

- THIS DRAWING IS TO BE READ IN CONJUNCTION WITH SPECIFICATIONS SCHEDULES & DRAWINGS BY BLACKSHEEP.
- ALL DIMENSIONS TO BE CHECKED ON SITE PRIOR TO MANUFACTURE. ROD DRAWINGS TO BE ISSUED FOR BLACKSHEEP COMMENT.
- SAMPLE OF ALL FINISHES TO BE SUBMITTED TO BLACKSHEEP FOR APPROVAL.
- ALL DISCREPANCIES AND OMISSIONS ON SITE MUST BE REPORTED TO DESIGNER FOR THEIR COMMENTS OR APPROVAL PRIOR TO COMMENCING WORK.
- ALL ELECTRICAL, LIGHTING, HVAC AND PLUMBING ISSUES TO BE REFERRED TO ENGINEERS DRAWINGS PRIOR TO COMMENCEMENT OF WORKS.
- THE DESIGNS ARE SUBJECT TO APPROVAL BY STATUTORY AUTHORITIES AND ANY NECESSARY ALTERNATIONS SHOULD BE MADE IF REQUIRED TO COMPLY WITH STATUTORY REQUIREMENTS.

PLANNING

Revisions	Comment	Date	Drawn	Checked
A	INTERNAL LED TAPE LIGHTING POSITION SHOWN BEHIND FROSTED GLAZING	03/03/16	BT	BT
B	INTERNAL FILM NOTATION AMENDED	15/03/16	BT	BT

Location Plan (NTS)

Blacksheep.

13-19 Vile Hill
London SE18 6DW
+44 (0) 20 7718 7418
enquiries@blacksheep.co.uk
blacksheep.co.uk

Client: FIVE GUYS
Project: KINGS CROSS THE LIGHTHOUSE BLOCK LONDON, WC2X

Drawing: PROPOSED SHOPFRONT SECTIONS

Drawing No.	Date	Scale	Revision	Drawn By	Checked By
FIV091-A412	19/02/16	1:10 @ A1	B	SC	BT