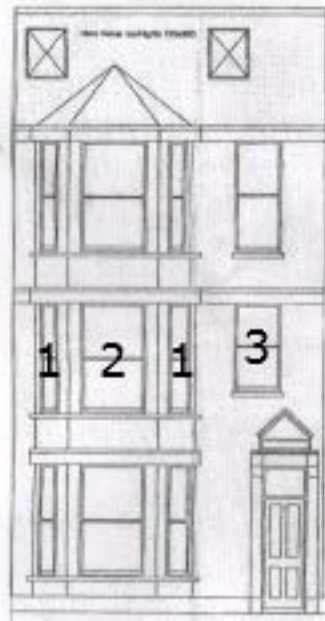
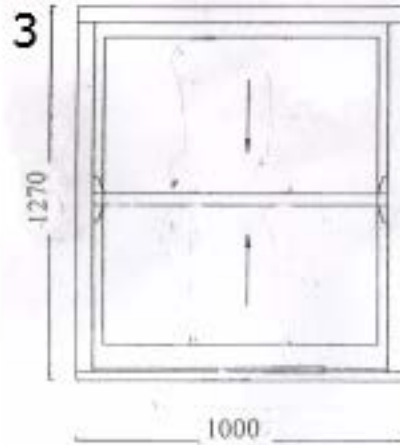
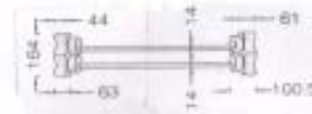
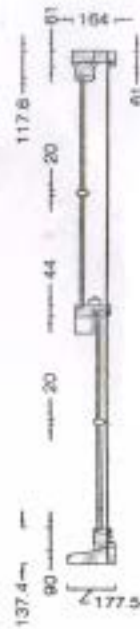
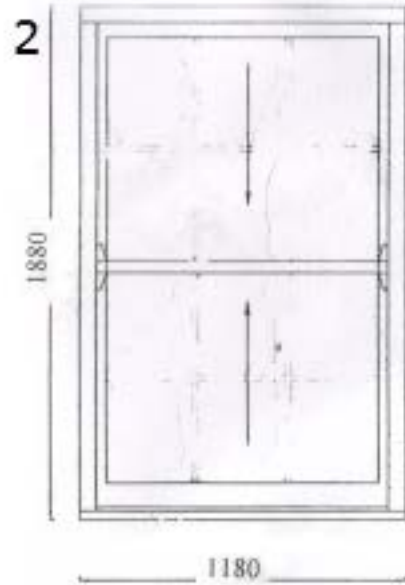


82B College Place, NW1 0DJ
Proposed timber windows Scale 1:100

Drawing 1
Revision A



FRONT ELEVATION



Specifications

- | | | |
|---|-----------------|---|
| 1 | Window: | 1 |
| | Type: | Vertical sliding sash |
| | Material: | ACCOYA, hardwood cill |
| | Quantity: | 2 |
| | Dimensions: | 670 x 1,880 |
| | Colour outside: | Standard white |
| | Colour inside: | Standard white |
| | Glazing: | 4/16/4 TG-SCA-Swiss V-Georgian / double glazing |
| | Furniture: | sash lock (polished chrome) |
| 2 | Window: | 2 |
| | Type: | Vertical sliding sash |
| | Material: | ACCOYA, hardwood cill |
| | Quantity: | 1 |
| | Dimensions: | 1,180 x 1,880 |
| | Colour outside: | Standard white |
| | Colour inside: | Standard white |
| | Glazing: | 4/16/4 TG-SCA-Swiss V-Georgian / double glazing |
| | Furniture: | sash lock (polished chrome) |
| 3 | Window: | 3 |
| | Type: | Vertical sliding sash |
| | Material: | ACCOYA, hardwood cill |
| | Quantity: | 1 |
| | Dimensions: | 1,000 x 1,270 |
| | Colour outside: | Standard white |
| | Colour inside: | Standard white |
| | Glazing: | 4/16/4 TG-SCA-Swiss V-Georgian / double glazing |
| | Furniture: | sash lock (polished chrome) |