

DOOR & FRAME SCHEDULE

Nº	TYPE	SIZE	FINISH	FRAME
B1	D	4'0" x 6'6" x 19"	E.	
B2	E	2'6" x 6'6" x 19"	G	
B3	H	2'6" x 4'6" x 19"		
B4	L	2'6" x 6'6" x 19"	E	
B5	L	2'6" x 6'6" x 19"	B	
B6	L	2'6" x 6'6" x 19"	B	
B7	C	4'0" x 6'6" x 2"		
B8	E	2'6" x 6'6" x 19"	O	
B9	L	2'6" x 6'6" x 19"	B	
B10	L	2'6" x 6'6" x 19"	B	
B11	C	4'0" x 6'6" x 2"		

AS FITTED LAYOUT.

Area is approximately 380m²

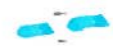



NOTE
1/2" SLEEVE THROUGH THE FLOOR SLAB
AT 700L LEVEL FOR GPO CABLE
SLEEVE POSITIONED 6" FROM EACH
WALL OR AS AGREED WITH GPO
ON SITE

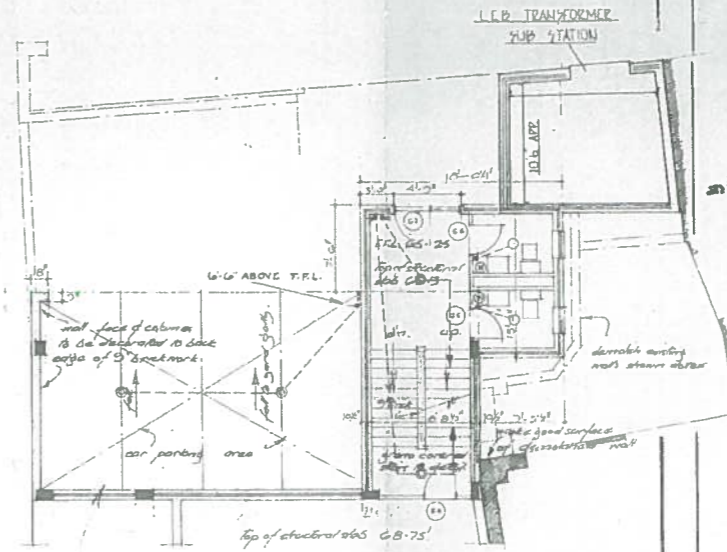
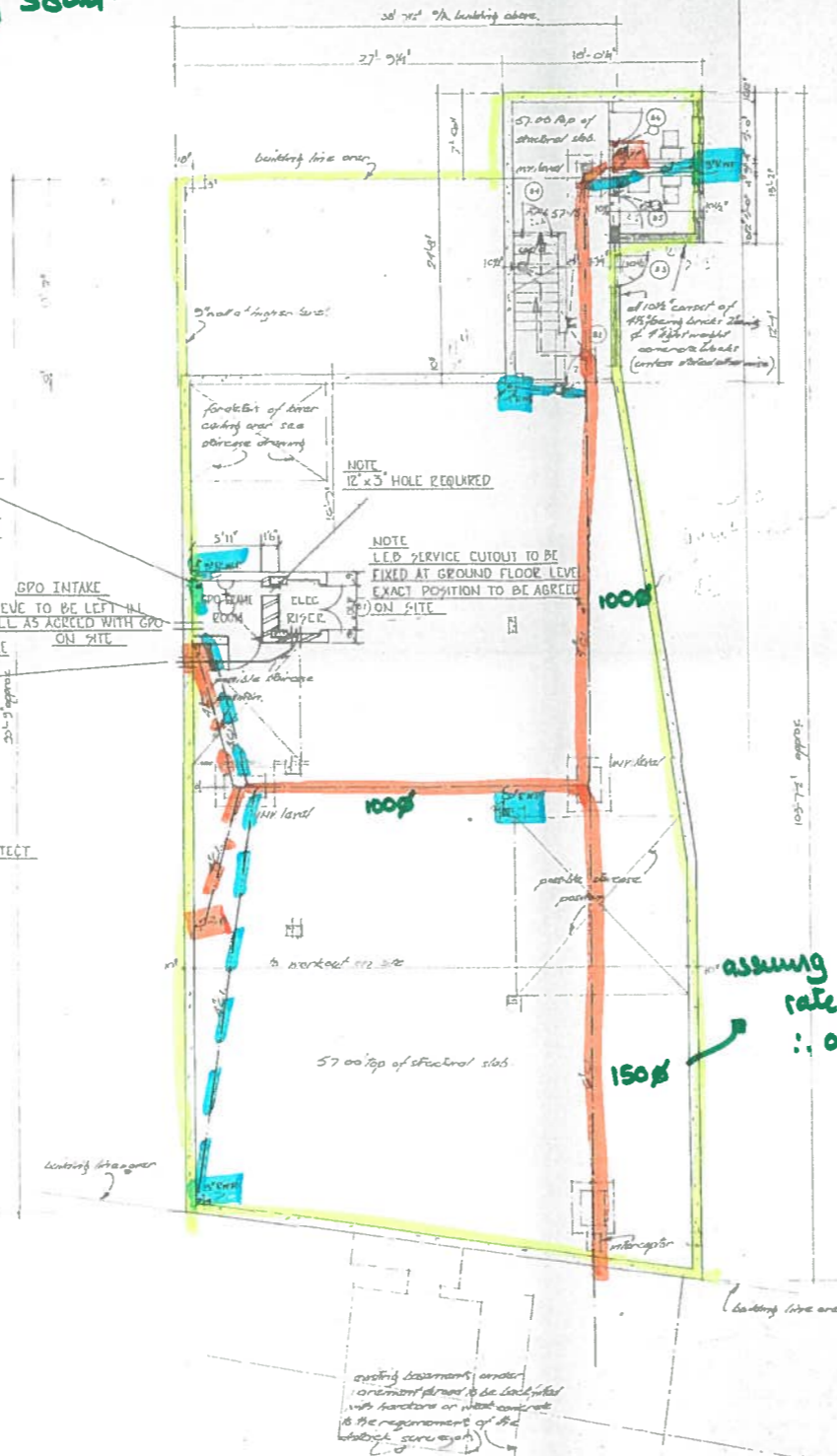
NOTE
APPROX ROUTE OF L.E.B. SERVICE CABLE
EXACT POSITION TO BE DETERMINED
WITH L.E.B. ON SITE

NOTE
2-3" SLEEVES TO BE LEFT IN EACH
RISER FLOOR SLAB FOR GPO CABLES.
THESE SLEEVES TO BE ON LEFT
HAND WALL OF RISER cupboard
IN POSITION TO BE AGREED WITH ARCHITECT

NOTE
12" x 3" HOLE REQUIRED

NOTE
L.E.B. SERVICE CUTOFF TO BE
FIXED AT GROUND FLOOR LEVEL
EXACT POSITION TO BE AGREED
ON SITE

-  SW network
-  FW network
-  Cabled Network.
-  Site Boundary



PLAN AT 69-00' LEVEL.

assuming 150p @ 11.100
rate = 17.81/s
∴ okay.

- KEY TO ELECTRICAL SYMBOLS
- CEILING LIGHTING POINT (TENANTS)
 - ○ CEILING LIGHTING POINT (LANDLORDS)
 - BRACKET (TENANTS)
 - ○ BRACKET (LANDLORDS)
 - 13 AMP SOCKET OUTLET (TENANTS)
 - 13 AMP SOCKET OUTLET (LANDLORDS)
 - ∇ 1 WAY WALL SWITCH
 - ∇ 2 WAY WALL SWITCH
 - ∇ PUSH BUTTON SWITCH
 - ∇ 1 WAY CEILING SWITCH
 - ⊕ WATER HEATER POINT
 - ⊕ FIRE ALARM BELL
 - ⊕ FIRE ALARM PUSH
 - ⊕ 30 AMP COOKER CONTROL UNIT
 - ⊕ 13 AMP SWITCH SPUR
 - ⊕ IMMERSION HEATER POINT
 - △ TELEPHONE POINT
 - ⊕ UNDERFLOOR DUCTING & JUNCTION BOX
 - ⊕ TV, TELEVISION AERIAL SOCKET
 - ⊕ CONSUMER CONTROL UNIT
 - FUTURE CEILING SWITCH OUTLETS
 - NO SWITCHES SUPPLIED UNDER THIS CONTRACT

NOTES

FIGURED DIMENSIONS TO BE READ IN
PREFERENCE TO SCALED
ALL DIMENSIONS & CONDITIONS TO BE
VERIFIED ON SITE BEFORE PROCEEDING

NOTE
FOR DETAILS OF BUILDERS WORK
TO SUB STATION SEE L.E.B. PEG

- R5 FIRE ALARM INST ADDED 6.4.65
- R4 GPO FINAL REQUIREMENTS ADDED 1.10.64
- R3 ELECTRICAL RISER cupboard, GPO FRAME ROOM AND INTAKE POSITION ADDED 15.7.64
- R2 APPROX ROUTE OF L.E.B. SERVICE CABLE CHANGE ADDED FOR GPO RUMPY ADDED 2.7.64
- R1 SUB STATION ADDED 28.8.64

REVISIONS

FITZROY ROBINSON & PARTNERS

CHARTERED ARCHITECTS
1 GRAYS INN SQUARE · LONDON · WC1
TELEPHONE · CHANCERY 2111

The Honourable Society of Gray's Inn.

19-20 HIGH/HOLBORN, W.C.1

BASEMENT PLAN.

DRAWN BY: CHECKED: DATE: 21-10-63

REVISION LETTER

PHOENIX ELECTRICAL CO. LTD.
16-18 MARSHALSEA RD.,
LONDON S.E.1.
DRC. NO. 5130/B

350/19

SCALE 1/8" = 1'-0"