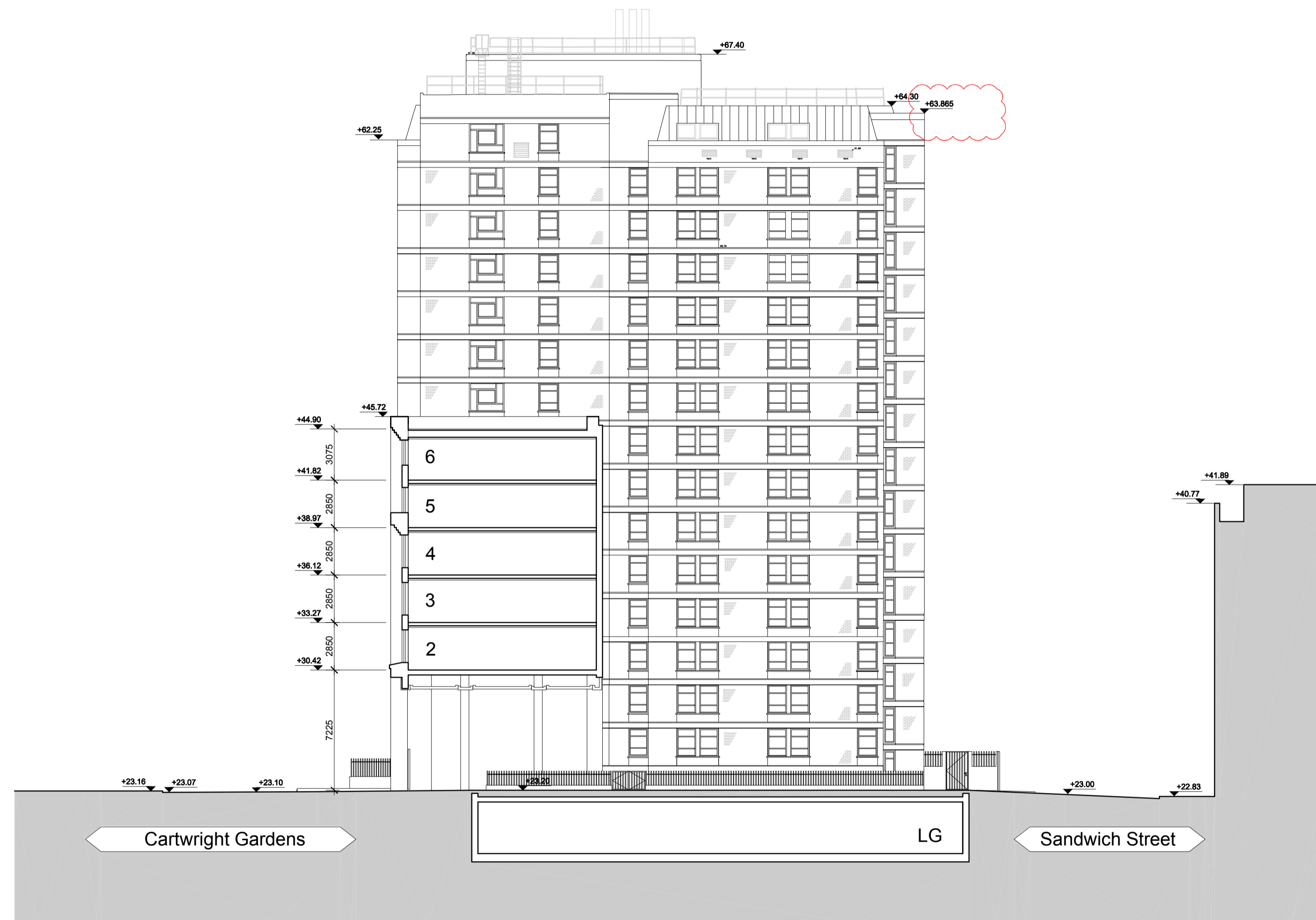
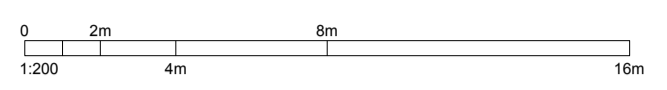


KEY PLAN

NOTES:
 DO NOT SCALE. FIGURED DIMENSIONS ONLY TO BE TAKEN FROM THIS DRAWING. CHECK DIMENSIONS ON SITE AND REPORT DISCREPANCIES TO THE ARCHITECT.
 THIS DRAWING IS PROTECTED BY COPYRIGHT.
 ALL AREAS HAVE BEEN MEASURED FROM CURRENT DRAWINGS. THEY MAY VARY BECAUSE OF (EG) SURVEY, DESIGN DEVELOPMENT, CONSTRUCTION TOLERANCES, STATUTORY REQUIREMENTS OR RE-DEFINITION OF THE AREAS TO BE MEASURED.



No.	Date	Comment	Drawn	Chk'd
P6	02.03.16	Hughes Parry Tower parapet raised from 63.590 to 63.865	EB	RM
P5	27.03.24	revision tags and change log added	RCR	RM
P4	26.03.14	REGULARIZATION ISSUE - refer to change log	RCR	RM
P3	11.12.13	REVISED IN LINE WITH DEVELOPED DESIGN	RCR	RM
P2	10.04.13	REVISED IN LINE WITH CASE OFFICER COMMENTS	SM	NMI
P1	15.03.13	FOR PLANNING	SM	NMI

Issue Status

PLANNING

tp bennett
 architecture
 interiors
 planning

One America Street London SE1 ONE UK +44 (0) 20 7208 2000 www.tpbennt.com
 London Moscow Abu Dhabi New York

Project
 Proposed
 University of London
 Cartwright Gardens, London

Drawing Title
 Proposed Service Road Elevation

Drawn	Date	Scale	Alt. Ref.
SM	09.11.12	1:200/1:400	--

tp bennett Project No.	Drawing Number	Rev
A10417	D 0204	P6