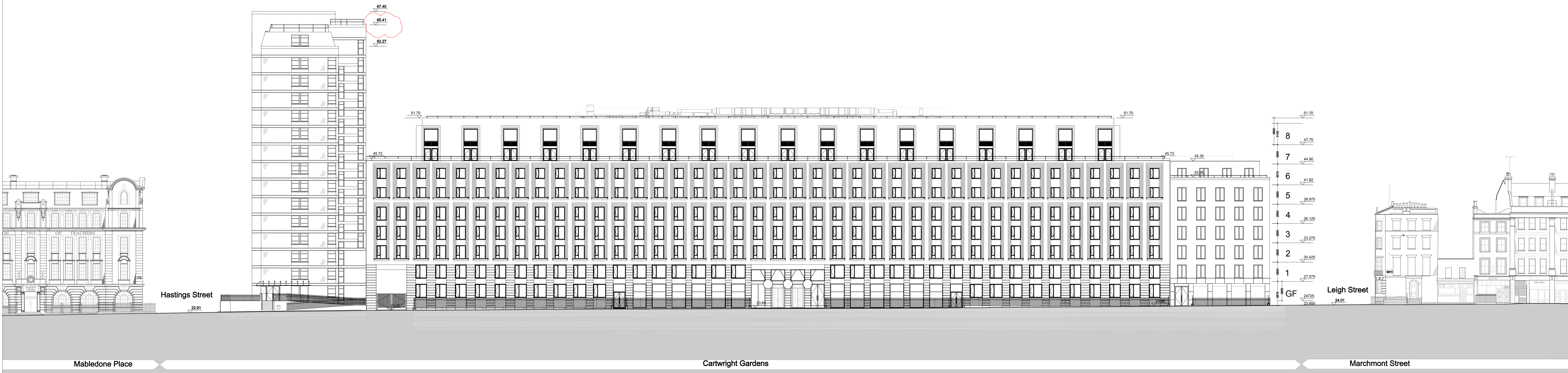
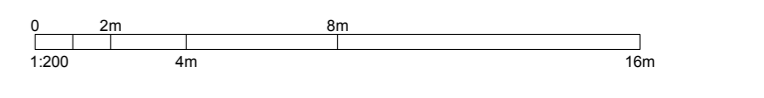


KEY PLAN

NOTES:
 DO NOT SCALE. FIGURED DIMENSIONS ONLY TO BE TAKEN FROM THIS DRAWING. CHECK DIMENSIONS ON SITE AND REPORT DISCREPANCIES TO THE ARCHITECT.
 THIS DRAWING IS PROTECTED BY COPYRIGHT.
 ALL AREAS HAVE BEEN MEASURED FROM CURRENT DRAWINGS. THEY MAY VARY BECAUSE OF (EG) SURVEY, DESIGN DEVELOPMENT, CONSTRUCTION TOLERANCES, STATUTORY REQUIREMENTS OR REDEFINITION OF THE AREAS TO BE MEASURED.



Hastings Street

Leigh Street

Mabledon Place

Cartwright Gardens

Marchmont Street

No.	Date	Comment	Drawn	CHKD
PT	02.03.16	Hughes Perry Tower parapet raised from 65.07 to 65.4	EB	RM
DE	16.10.14	Floor plate added. Rail removed from 1st, 1917	RM	AR
PS	27.03.24	revision tags and change log added	RGR	RM
PA	28.03.14	REGULARIZATION ISSUE - refer to change log	RGR	RM
P3	11.12.13	REVISED IN LINE WITH DEVELOPED DESIGN	RGR	RM
P2	10.04.13	REVISED IN LINE WITH CASE OFFICER COMMENTS	SM	NM
PT	16.03.13	FOR PLANNING	EG	NM

PLANNING
 tp bennett
 architecture
 interiors
 planning

One America Street London SE11 ONE UK +44 (0)20 7298 2000 www.tpbenne.com
 London Moscow Abu Dhabi New York

Project
 Proposed University of London Cartwright Gardens, London

Drawing Title
 Proposed South West Elevation (Cartwright Gardens)

Drawn	Date	Scale	Sheet No.	Total Sheets
SM	09.11.12	1:200 (1:500)	4	10

tp bennett Project No. Drawing Number Rev
 A10417 D 0200 P7