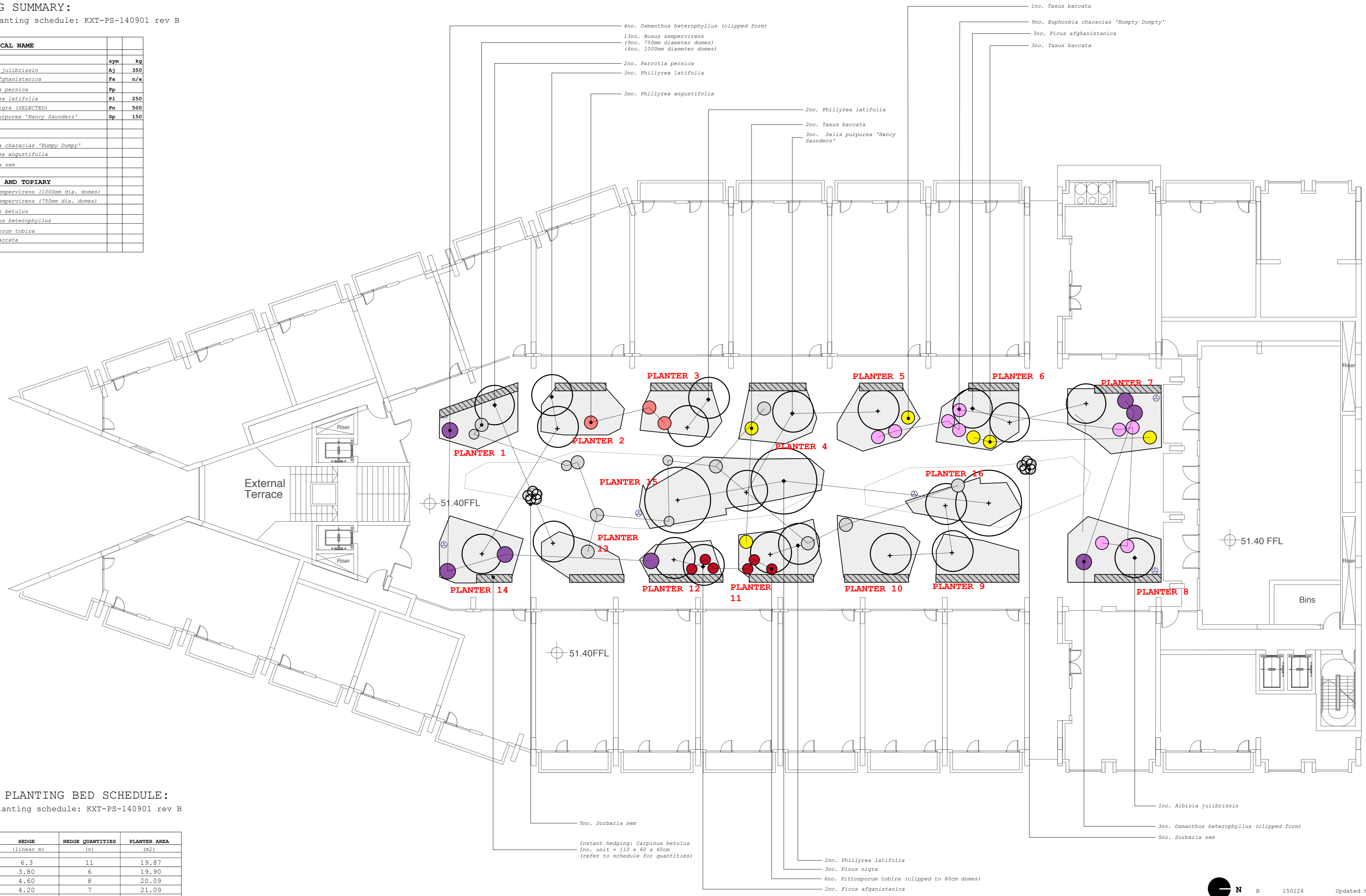


PLANTING SUMMARY:

Refer to planting schedule: KXT-PS-140901 rev B

n	BOTANICAL NAME	sym	kg
n=21 TREES			
1	<i>Albizia julibrissin</i>	Aj	350
5	<i>Ficus afghanistanica</i>	Fa	n/a
2	<i>Parrotia persica</i>	Pp	
7	<i>Phillyrea latifolia</i>	Pl	250
3	<i>Pinus nigra</i> (SELECTED)	Pn	500
3	<i>Salix purpurea</i> 'Nancy Saunders'	Sp	150
n=22 SHRUBS			
9	<i>Euphorbia characias</i> 'Humpy Dumpy'		
3	<i>Phillyrea angustifolia</i>		
10	<i>Sorbaria sem</i>		
n=32 HEDGES AND TOPIARY			
4	<i>Buxus sempervirens</i> (1000mm dia. domes)		
9	<i>Buxus sempervirens</i> (750mm dia. domes)		
108	<i>Carpinus betulus</i>		
7	<i>Osmanthus heterophyllus</i>		
6	<i>Pittosporum tobira</i>		
6	<i>Taxus baccata</i>		



HEDGE & PLANTING BED SCHEDULE:

Refer to planting schedule: KXT-PS-140901 rev B

PLANTER NO.	HEDGE (linear m)	HEDGE QUANTITIES (n)	PLANTER AREA (m2)
P1	6.3	11	19.87
P2	3.80	6	19.90
P3	4.60	8	20.09
P4	4.20	7	21.09
P5	3.30	6	23.00
P6	3.80	6	25.04
P7	5.00	8	30.18
P8	5.00	8	29.61
P9	6.30	11	17.35
P10	4.90	8	23.50
P11	4.80	8	22.23
P12	5.60	9	14.27
P13	4.10	7	15.77
P14	2.70	5	24.15
P15	-	-	47.70
P16	-	-	19.50

North Arrow

Rev:	Date:	Description:	By:
B	150224	Updated hedging	IH
A	150204	Updated planting plan	IH

Drawing Title: Podium Garden
Project: Planting Plan- trees and shrubs
Client: Kings Cross T1
 Argent

Scale: 1:150 @ A1
Date: SEPT 2014
Drawn By: AB
Checked By: IH

Drawing Number: **KXT-LD-400**
Revision **Status**
B FOR INFORMATION