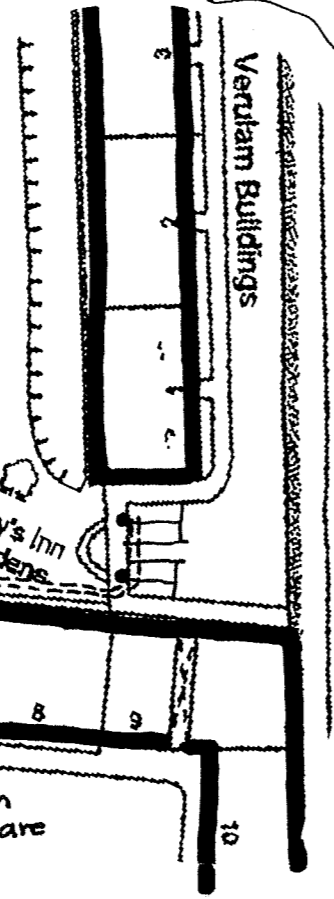


• Proposed Electric Vehicle charging points serving Raymond Buildings

4no Electric Vehicle charging points to 8no existing Car Parking Bays positioned to avoid tree roots
 Electricity cables from Basement Electrical Cpd + below paving tarmac roadway approx 460mm deep in metal duct



Electricity Cables from Basement Electricity Meter Rooms in Basement cables run below Grass to Garden approx 460mm deep in metal duct

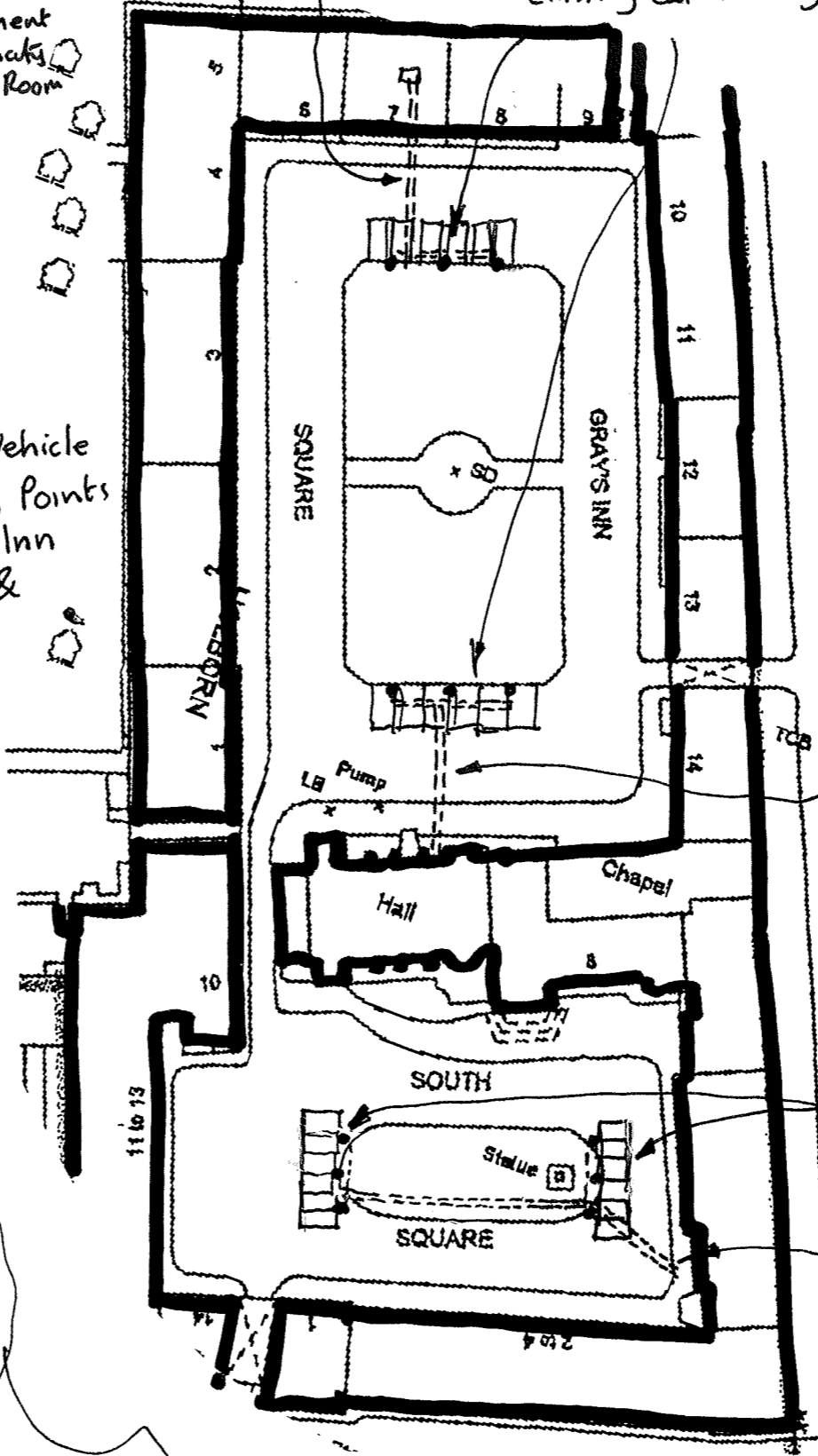
• Proposed Electric Vehicle Charging points to Verulam Buildings

• Proposed Electric Vehicle Charging Points to Gray's Inn Square & South Square

2no Electric Vehicle Charging Points + 4no existing Car Parking Bays

Electricity cables from Basement switch under Paving + Tarmac Roadway from Basement Electricity Meter Room

3no Electric Vehicle charging points & 6no existing Car Parking Bays



Electricity Cables from Basement Meter Room to Hall below pavings + Roadway

3no Electric Vehicle Charging Points & 6no existing car parking spaces

Electricity cables from Basement Electricity Meters and below paving roadway/garden approx 460mm deep in metal duct



Drawing No: HK2209/SK003
 Scale: 1:500 @ A3
 Date: 7th March 2016
 Drawn LM
 0 5 10 20 30 metres

GHK ARCHITECTS
 Architects · Designers · Historic Building Specialists
 530 Fulham Road, London SW6 5NR
 Tel: +44 (0)20 7471 8000 mail@ghkarchitects.co.uk
 www.ghkarchitects.co.uk

Grays Inn Estate Proposed Electric Vehicle charging points - South Square, Gray's Inn Square adjacent to Verulam Buildings and opposite Raymond Buildings - Proposed Locations + services for The Honourable Society of Gray's Inn