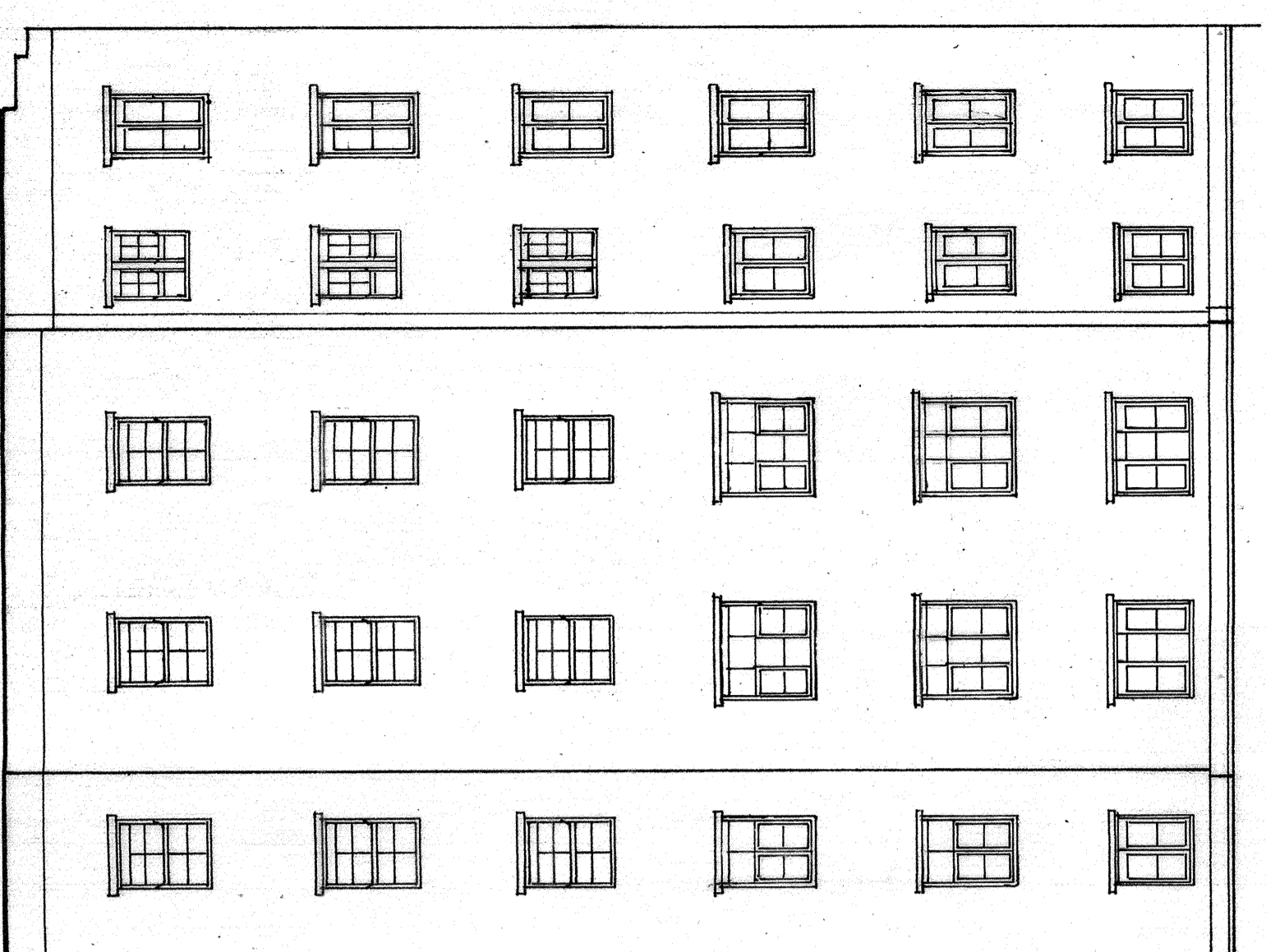


REAR ELEVATION 'C'



REAR ELEVATION 'D'

NOTES

1. ALL WINDOWS ARE TO BE REPLACED USING TIMBER FRAMED WINDOWS AS MANUFACTURED BY HESSRS. ARDEN WINDOWS LIMITED, WITHIN EXISTING STRUCTURAL OPENINGS.
2. REFER TO NOTES ON DRAWING NO. 0515/423-06 FOR WINDOW SPECIFIC DETAILS.
3. ALL TIMBER FRAMES AND SASHES TO BE TREATED WITH A WATER BASED PRESERVATIVE TREATMENT, APPLIED BY IMMERSION COAT, TO BE FOLLOWED BY A MINIMUM ONE COAT BASECOAT PRIMER AND TWO FURTHER COATS OF FACTORY APPLIED MICROPOROUS PAINT FINISH - COLOUR - WHITE. DRY PAINT FINISH TO BE BETWEEN 60-100 MICRONS TO A 30% SILK GLOSS LEVEL.
4. WINDOWS ARE DOUBLE GLAZED USING 28MM THICK DOUBLE GLAZED UNITS COMPRISING 2 LEAFS 4MM TOUGHENED FLOAT GLASS (OBSCURE WHERE NECESSARY), WITH A 20MM ARGON GAS FILLED CAVITY, WITH LOW 'E' COATING TO INTERNAL SURFACE OF GLASS.
5. ANY DISTURBED FINISHES TO BE MADE GOOD TO APPROVED STANDARD.

READ IN CONJUNCTION WITH DRAWING NO. 0515/423-03
 REPLACEMENT OF WINDOWS AT
 FLATS 1-36, CHENIES STREET
 CHAMBERS, LONDON WC1E 6AJ.

SCALE 1:100
 @ A1 SIZE
 JUNE 2015

0515/423-04A

REV. 1

09/06/15 INITIAL ISSUE

A Windows T-
 Elevation
 'D' - STAGES
 Revised

ELEVATIONS AS PROPOSED - SHEET 2