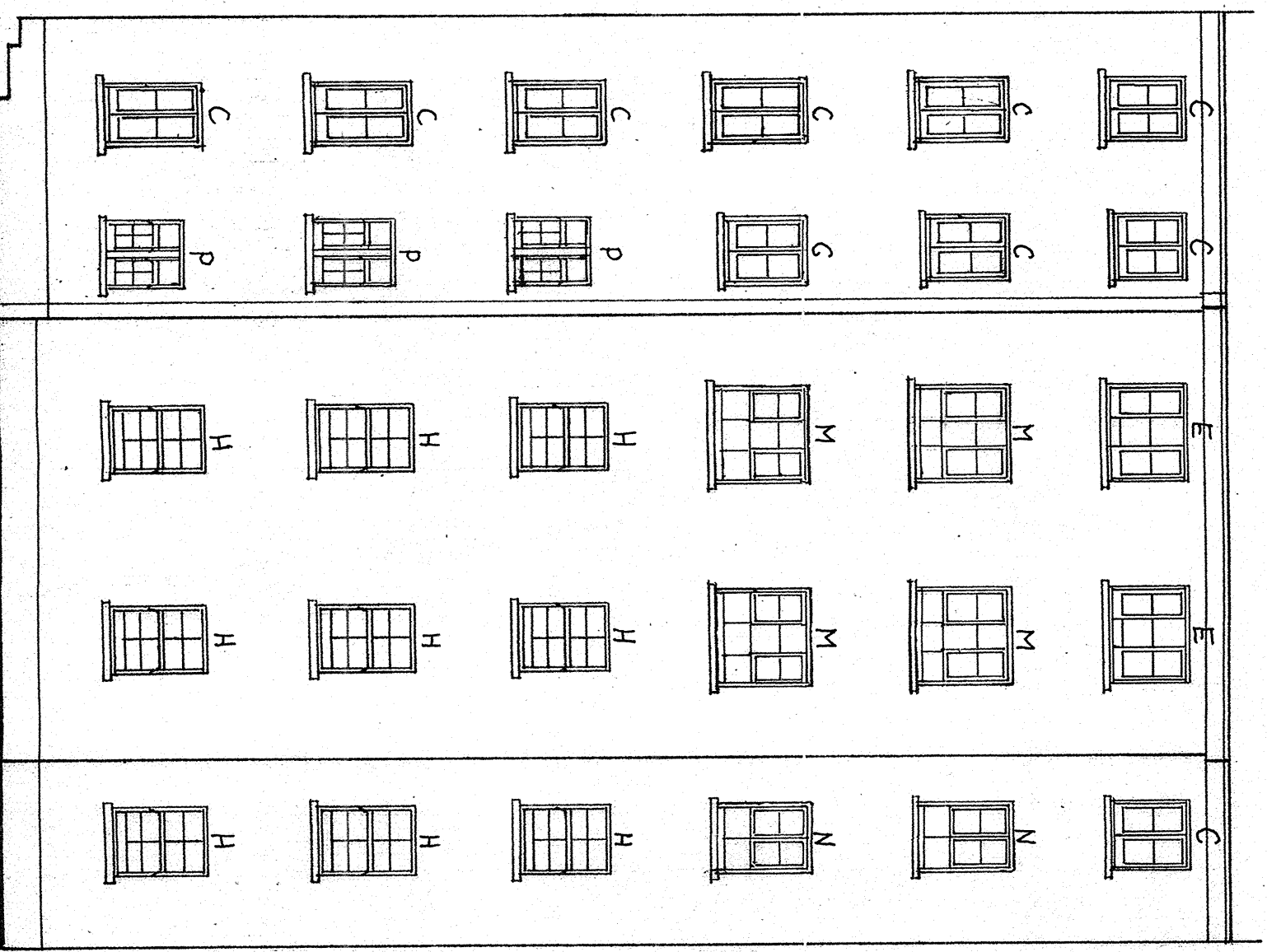


REAR ELEVATION 'C'



REAR ELEVATION 'D'

WINDOW REFERENCES

- TYPE 'A' — VERTICAL SLIDING SASH WINDOW WITH EXPOSED EXTERNAL WEIGHT BOXES — SEE ARDEN WINDOWS LTD. GENERIC DRAWING REF. AW KINWARD (VERTICAL SLIDING SASH).
- TYPE 'B' — DOUBLE VERTICAL SLIDING SASH WINDOWS AS PER TYPE 'A' ABOVE WITH CENTRAL WEIGHT BOX/MULLION.
- TYPE 'C' — DOUBLE SIDE HUNG CASEMENT WINDOW — CONCEALED CENTRE MULLION — SEE ARDEN WINDOWS LTD. GENERIC DRAWINGS AW HATHAWAY ASSX DRAWINGS SHEETS 6 & 7 (SOLID CENTRE GLAZING BAR OPTION).
- TYPE 'D' — SINGLE SIDE HUNG CASEMENT WINDOW ALL AS TYPE 'C' ABOVE.
- TYPE 'E' — DOUBLE SIDE HUNG CASEMENT WINDOW ALL AS TYPE 'C' ABOVE, WITH FIXED LIGHT CENTRE PANELS BETWEEN CASEMENTS.
- TYPE 'F' — VERTICAL CENTRE PIVOT WINDOW (SEE ARDEN WINDOWS LTD. GENERIC DRAWINGS REF. PIVOT Z013 — VERTICAL PIVOT WINDOW) OVER FIXED BOTTOM LIGHT.
- TYPE 'G' — VERTICAL CENTRE PIVOT WINDOW (ALL AS PER TYPE 'F' ABOVE, BUT WITH NO FIXED LIGHT.
- TYPE 'H' — VERTICAL SLIDING SASH WINDOW WITH CONCEALED INTERNAL WEIGHT BOXES — SEE ARDEN WINDOWS LTD. GENERIC DRAWING REF. AW KINWARD (VERTICAL SLIDING SASH).
- TYPE 'J' — DOUBLE VERTICAL SLIDING SASH WINDOW AS PER TYPE 'H' ABOVE WITH CENTRAL WEIGHT BOX/MULLION.
- TYPE 'K' — DOUBLE SIDE HUNG CASEMENT WINDOW ALL AS TYPE 'C' ABOVE, WITH 2 NO. FIXED LIGHTS BETWEEN CASEMENTS.
- TYPE 'L' — SINGLE SIDE HUNG CASEMENT WINDOW AS PER TYPE 'C' ABOVE, WITH 1 NO. ADJACENT FIXED LIGHT.
- TYPE 'M' — DOUBLE SIDE HUNG CASEMENT WINDOW AS PER TYPE 'C' ABOVE WITH FIXED LIGHTS BETWEEN AND BELOW CASEMENTS.
- TYPE 'N' — DOUBLE SIDE HUNG CASEMENT WINDOW AS PER TYPE 'C' ABOVE WITH FIXED LIGHTS BELOW CASEMENTS.
- TYPE 'P' — DOUBLE VERTICAL SLIDING SASH WINDOW AS PER TYPE 'J' ABOVE BUT WITH SASHES SPLIT 2/3 TOP, 1/3 LOWER.

READ IN CONJUNCTION WITH DRAWING NO. 0515/423-03
 REPLACEMENT OF WINDOWS AT
 FLATS 1-36, CHENIES STREET
 CHAMBERS, LONDON WC1E 6AT.

ELEVATIONS AS PROPOSED — SHEET 2	
0515/423-06A	
JUNE 2015	
SCALE 1:100 @ A1 SIZE	
Rev	09/06/15 INITIAL ISSUE
A	ELEVATION D WINDOWS TYPE 'M' & 'P' ADDED