

1 Site North
1 : 50

MATERIALS:

PARAPET: ALUMINIUM POWDER COATED ANTHRACITE GREY RAL 7016 TBC

CLADDING: SIBERIAN LARCH COLOUR TBC

GLAZING & FRAMES: SOLID CORE EXTERNAL GRADE DOORS WITH SIBERIAN LARCH CLADDING TO MATCH FINISH TO CLADDING TBC

EXTERNAL DOORS: SOLID CORE EXTERNAL GRADE DOORS WITH SIBERIAN LARCH CLADDING TO MATCH ELEVATIONS TBC

RAINWATER GOODS: SQUARE EXTERNAL DOWN PIPES COLOUR BLACK RAL 9005 TBC

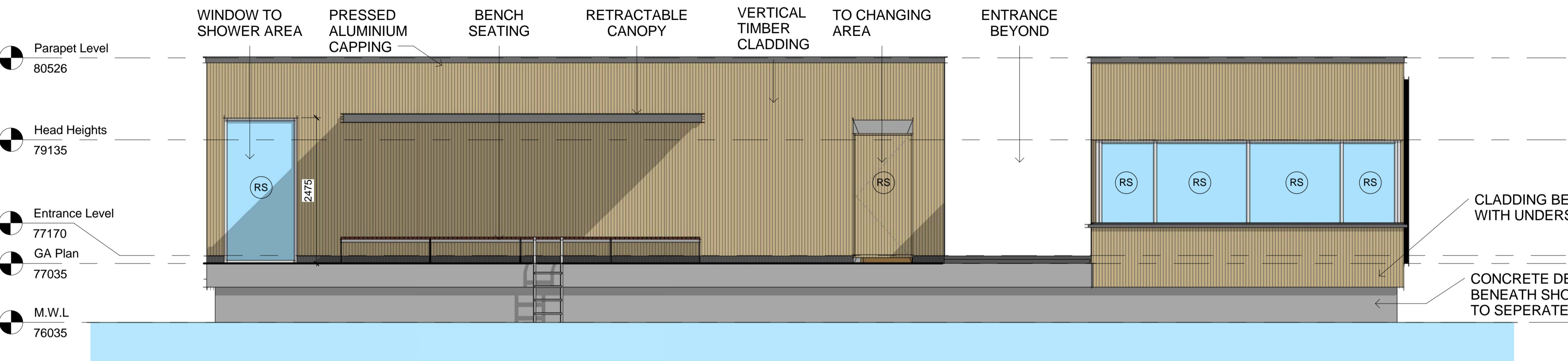
(RS) ROLLER SHUTTER REQUIRED OVER WINDOW/ DOOR. SHUTTER BOX MOUNTED INTERNALLY WITH SHUTTER ON EXTERNAL SIDE OF WINDOW

Construction staff and operatives must ensure the principle contractor has provided thorough and accurate information on all health and safety aspects relating to the designs identified on this drawing include the review of:

- Designers/contractors risk assessments
- Method statement
- Permit to work
- Pre-construction information

The designers note that the following health and safety risk relating to this drawing have not been eliminated during the design process:

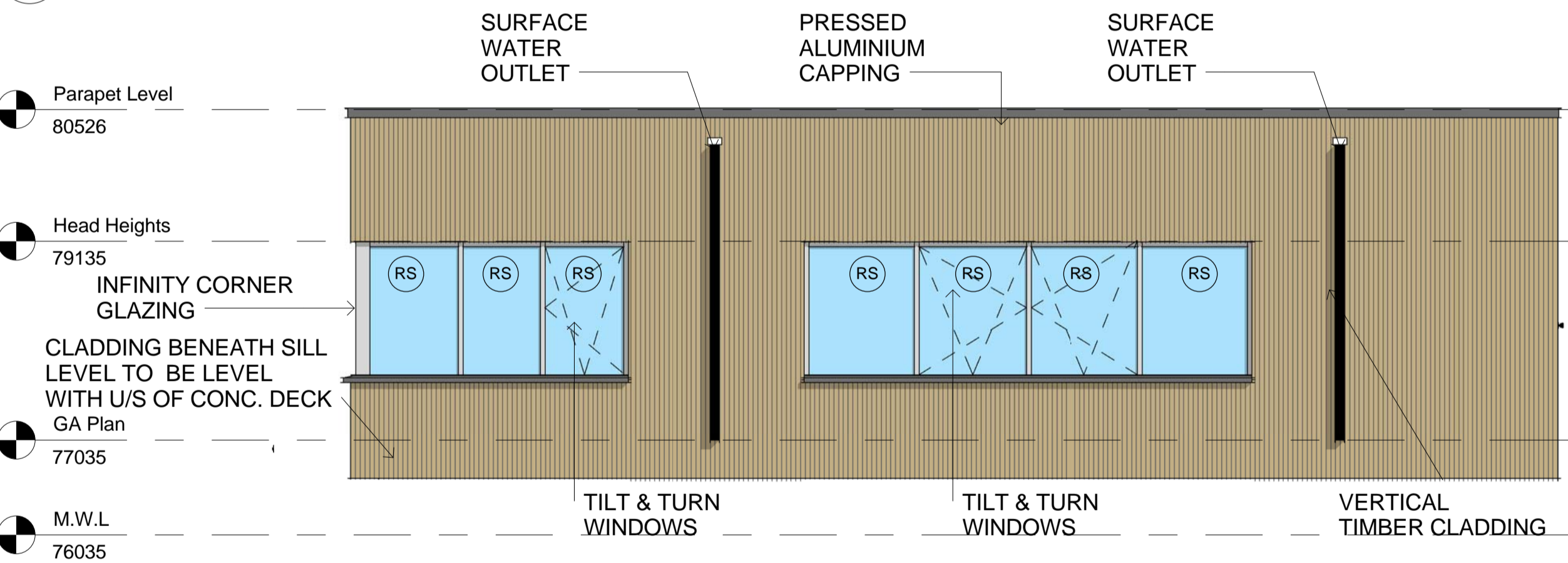
ref	residual risk



2 Site South
1 : 50

CLADDING BENEATH SILL LEVEL TO BE LEVEL WITH UNDERSIDE OF CONCRETE DECK

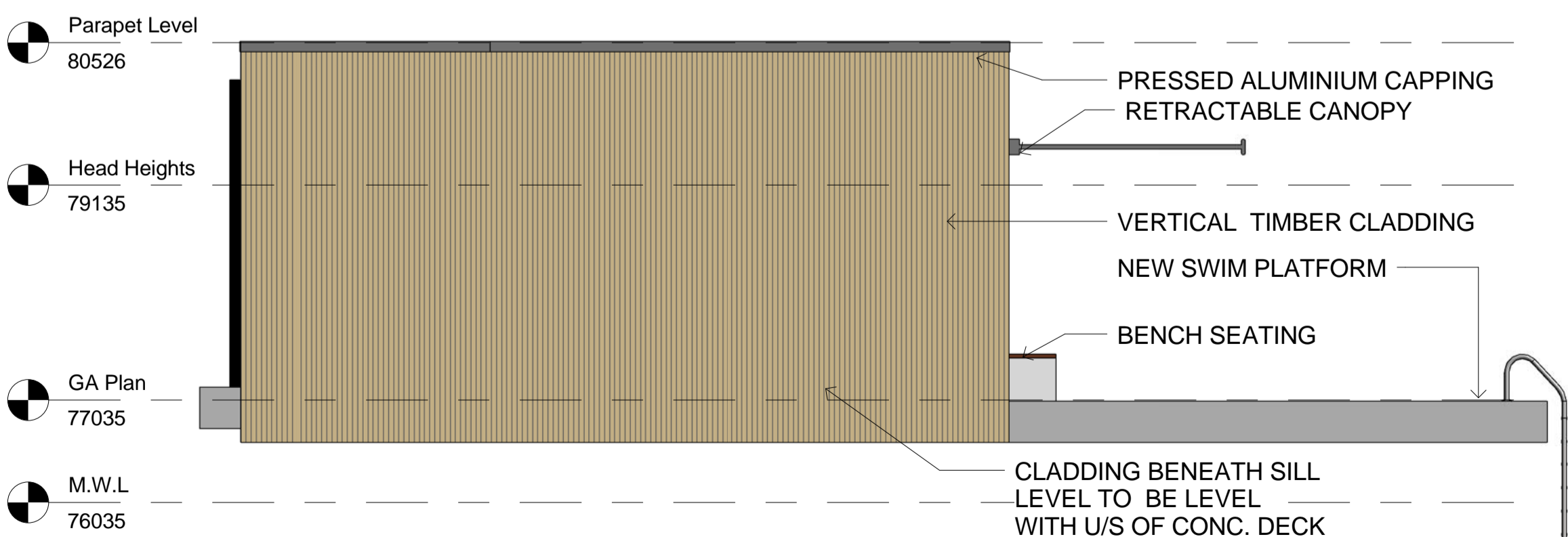
CONCRETE DECK & WORKS BENEATH SHOWN INDICATIVE TO SEPERATE DESIGN



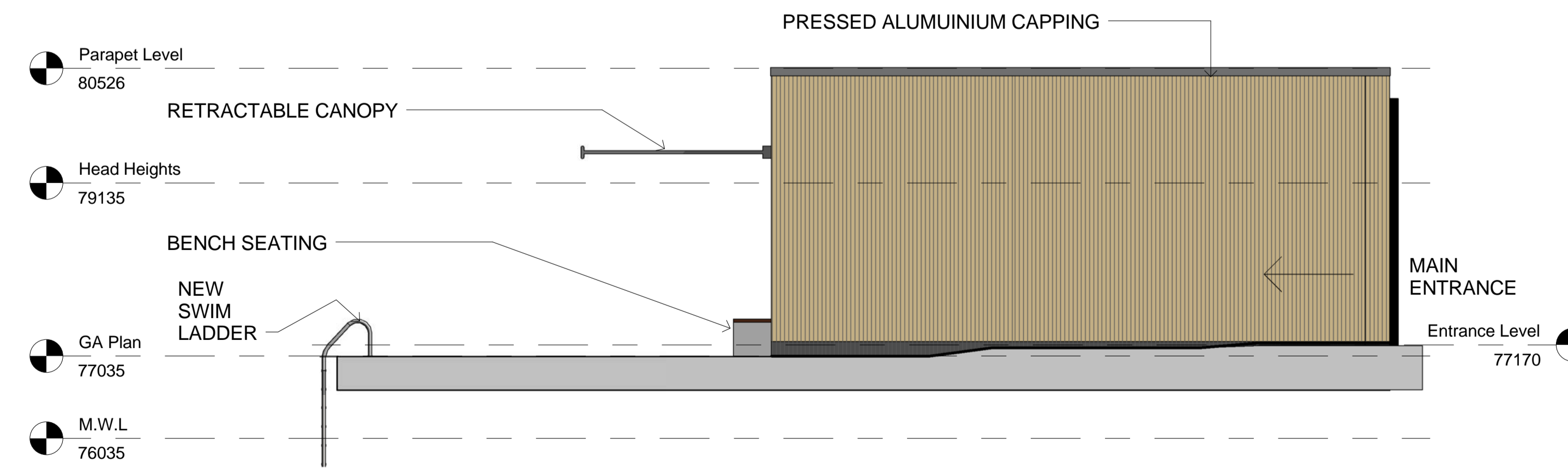
3 Life Guard Unit East
1 : 50



4 Life Guard Unit West
1 : 50



5 Changing Unit East
1 : 50



6 Changing Unit West
1 : 50

CONSTRUCTION ISSUE			
A	ENTRANCE GATE REMOVED. 'RS' SYMBOL ADDED FOR INTERNAL ROLLER SHUTTERS.	08.12.15	RS MF
	revision	date	by chk

All dimensions to be verified on site, and the Architect informed of any discrepancy. All drawings and specifications should be read in conjunction with the Health and Safety Plan; all conflicts should be reported to the appointed Principal Designer. This drawing is the copyright of Bowman Riley Architects Limited. © DO NOT SCALE THIS DRAWING

- preliminary
- planning
- comment
- tender
- construction
- record

BOWMAN RILEY ARCHITECTS
Wellington House, Otley St, Skipton, N Yorks, BD23 1EL
LEEDS | LONDON | SKIPTON
0113 3917570 | www.bowmanriley.com

IC MINING **Catfoss group** of companies

drawn by	checked by	date	scale @ A1
RS	RB	01/10/15	1 : 50

LADIES OF THE POND HAMPSTEAD HEATH KENWOOD

PROPOSED ELEVATIONS

project number	drawing number	revision
5566	5566 (300)	A

file reference: G:_PV\694 - LOTL Hampstead\7694 - 07 Revit\7967 - LOTP_Model.rvt