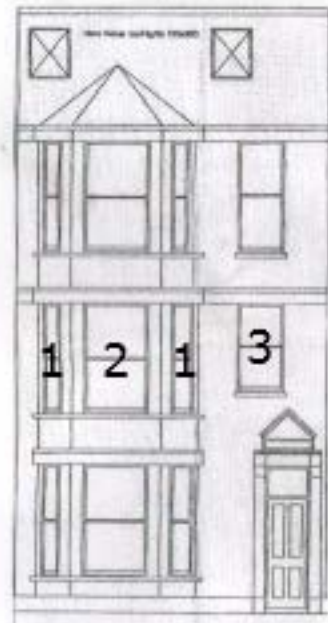
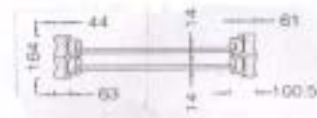
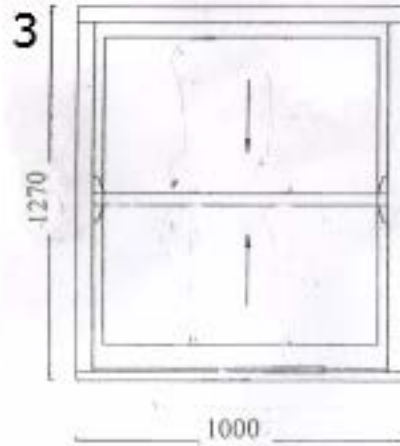
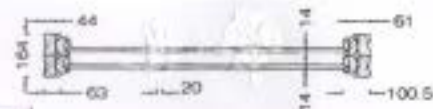
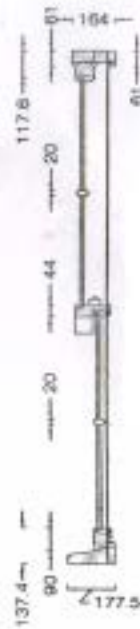
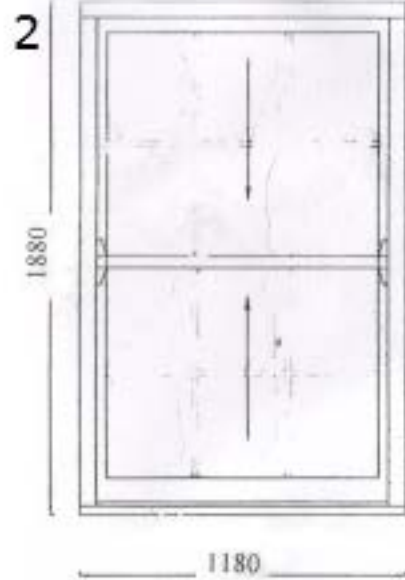


82B College Place, NW1 0DJ  
 Proposed timber windows Scale 1:100



FRONT ELEVATION



## **Specifications**

- |   |                 |   |
|---|-----------------|---|
| 1 | Window:         | 1   |
|   | Type:           | Vertical sliding sash                           |
|   | Material:       | ACCOYA, hardwood cill                           |
|   | Quantity:       | 2   |
|   | Dimensions:     | 670 x 1,880                                     |
|   | Colour outside: | Standard white                                  |
|   | Colour inside:  | Standard white                                  |
|   | Glazing:        | 4/16/4 TG-SCA-Swiss V-Georgian / double glazing |
|   | Furniture:      | sash lock (polished chrome)                     |
| 2 | Window:         | 2   |
|   | Type:           | Vertical sliding sash                           |
|   | Material:       | ACCOYA, hardwood cill                           |
|   | Quantity:       | 1   |
|   | Dimensions:     | 1,180 x 1,880                                   |
|   | Colour outside: | Standard white                                  |
|   | Colour inside:  | Standard white                                  |
|   | Glazing:        | 4/16/4 TG-SCA-Swiss V-Georgian / double glazing |
|   | Furniture:      | sash lock (polished chrome)                     |
| 3 | Window:         | 3   |
|   | Type:           | Vertical sliding sash                           |
|   | Material:       | ACCOYA, hardwood cill                           |
|   | Quantity:       | 1   |
|   | Dimensions:     | 1,000 x 1,270                                   |
|   | Colour outside: | Standard white                                  |
|   | Colour inside:  | Standard white                                  |
|   | Glazing:        | 4/16/4 TG-SCA-Swiss V-Georgian / double glazing |
|   | Furniture:      | sash lock (polished chrome)                     |