

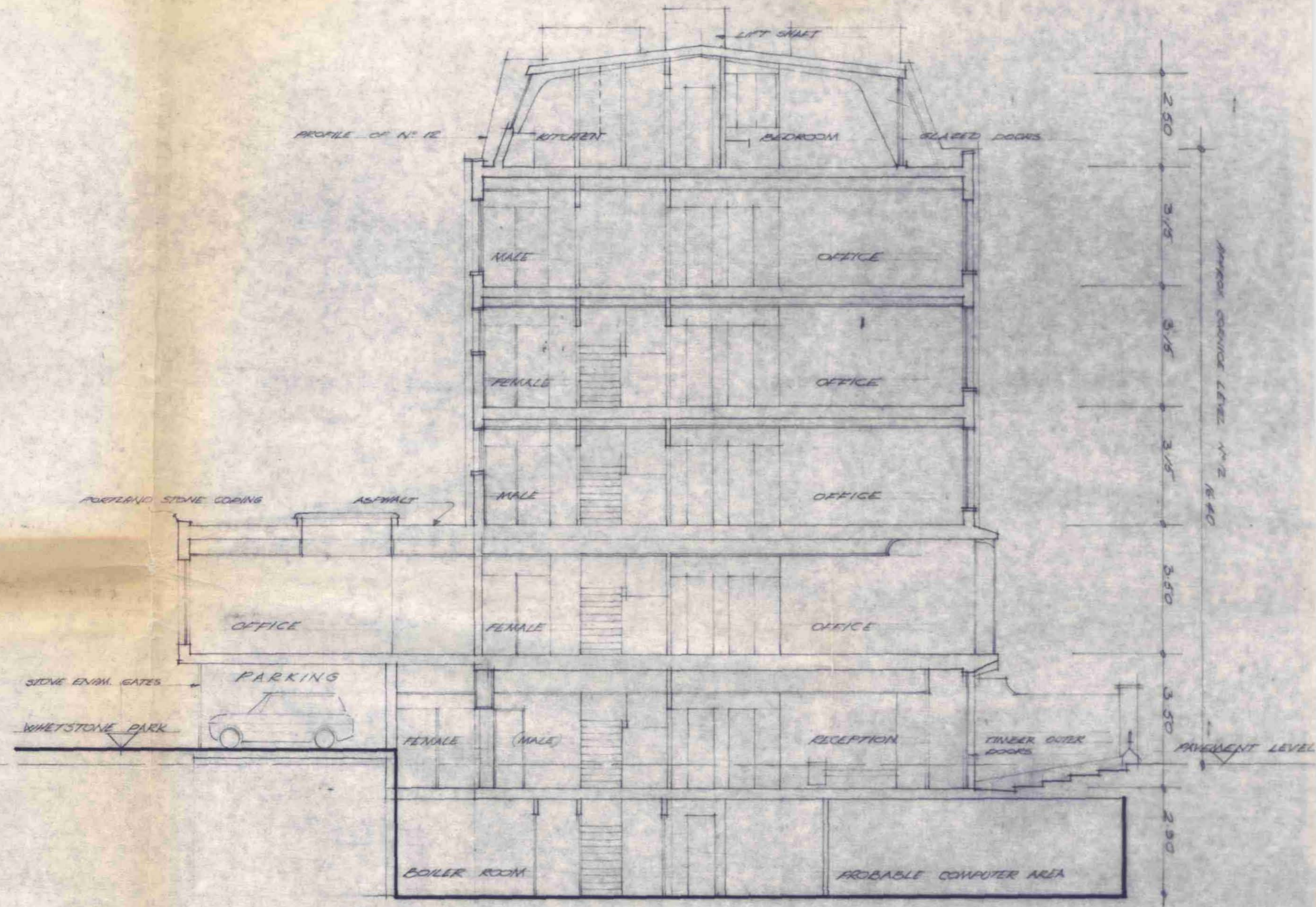
SECTION AA 1:100

EQUITY & LAW LIFE ASSURANCE SOCIETY LTD.
 10 & 11 LINCOLN'S INN FIELDS

GTP/P15/16/B/9554

G. [Signature]
 B. & N. WESTWOOD, PIET & PARTNERS.

AUGUST 70 401/5K 8



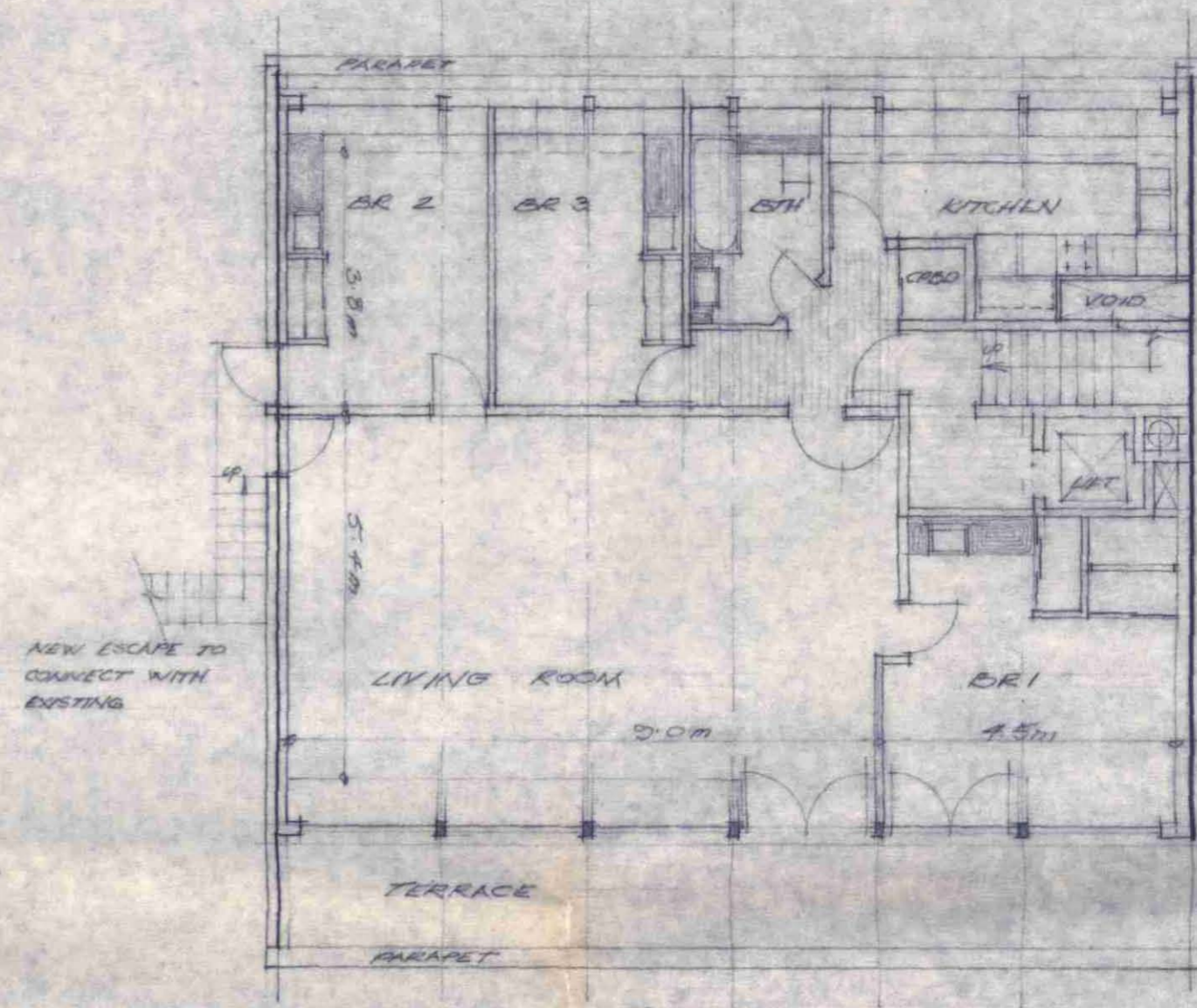
SECTION B-B 1:100 m

EQUITY & LAW LIFE ASSURANCE SOCIETY LTD.
10 #11 LINCOLN'S INN FIELDS

CTP/115/16/B/9594

B. & N. Westwood
B. & N. WESTWOOD, PIET & PARTNERS.

AUGUST 70 491/569



PENTHOUSE FLAT
1:100 M.

CTP/P15/16/B/9554

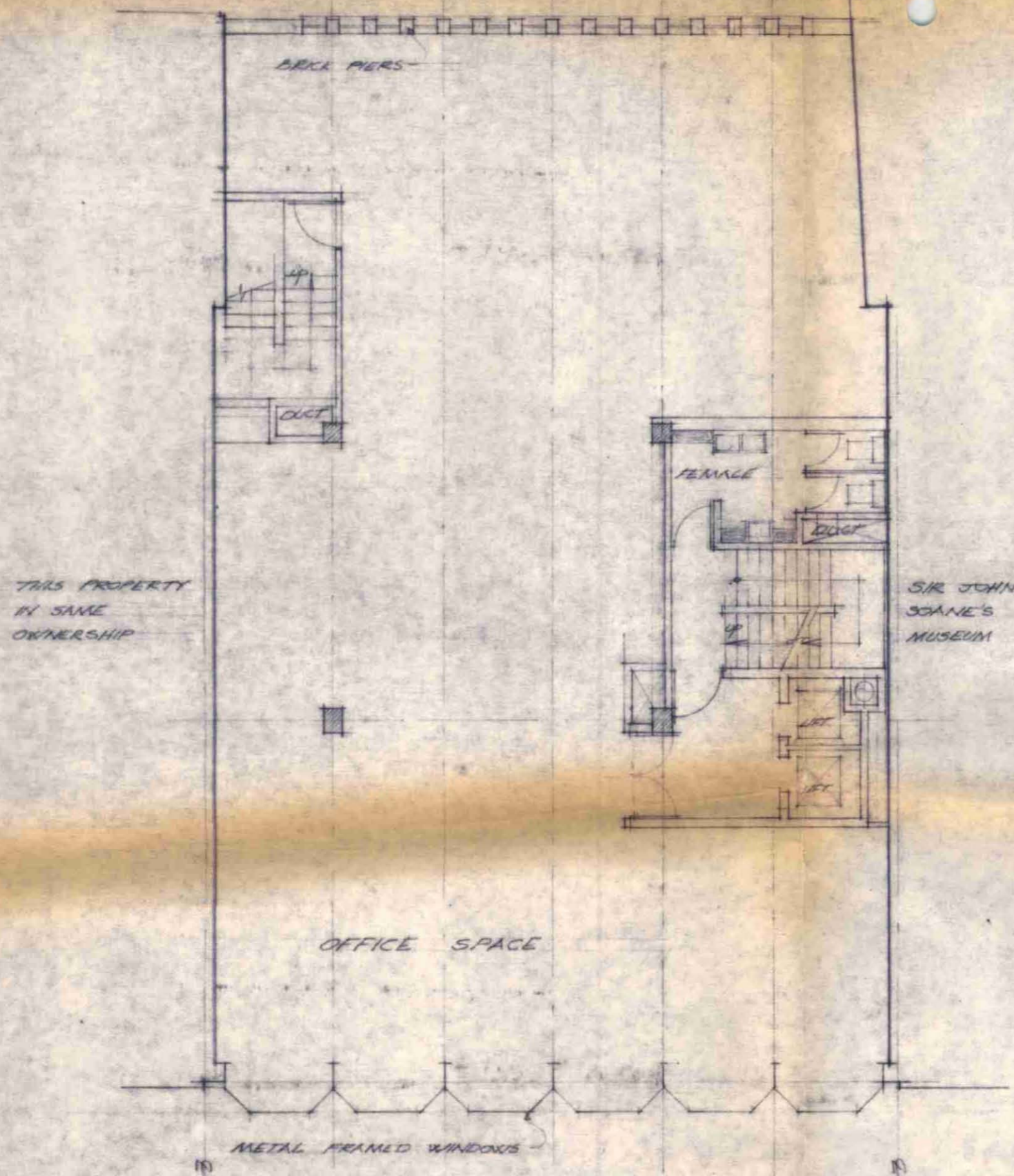
EQUITY & LAW LIFE ASSURANCE SOCIETY LTD.
10 & 11 LINCOLN'S INN FIELDS

[Handwritten Signature]

B. & N. WESTWOOD, PIET & PARTNERS.

AUGUST 70

431/5K7



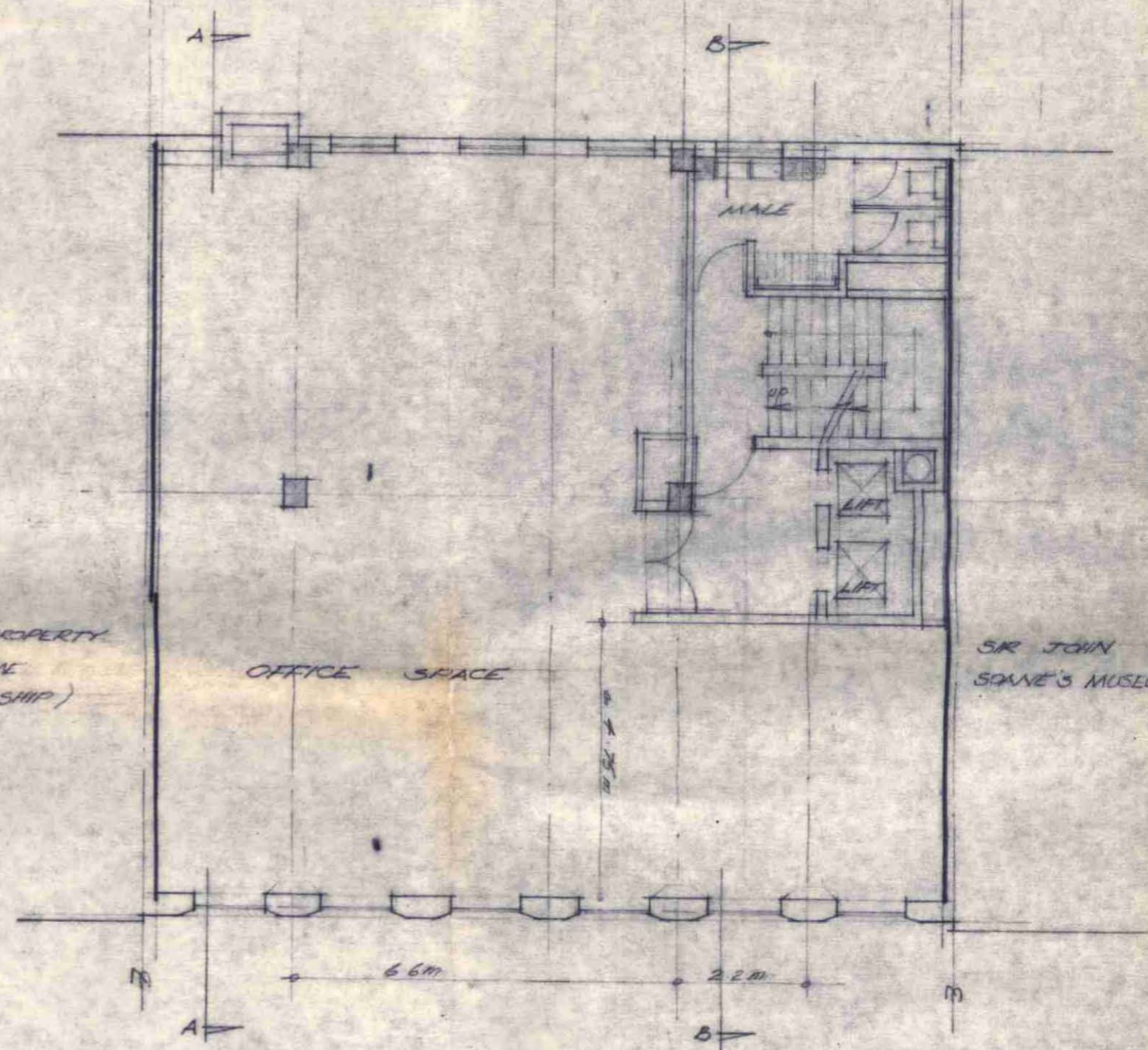
FIRST FLOOR PLAN

1:100 m.

(OFFICE AREA 2,550 sq ft)



THIRD FLOOR GENERALLY AS BELOW BUT FEMALE W.C.



SECOND & FOURTH FLOORS

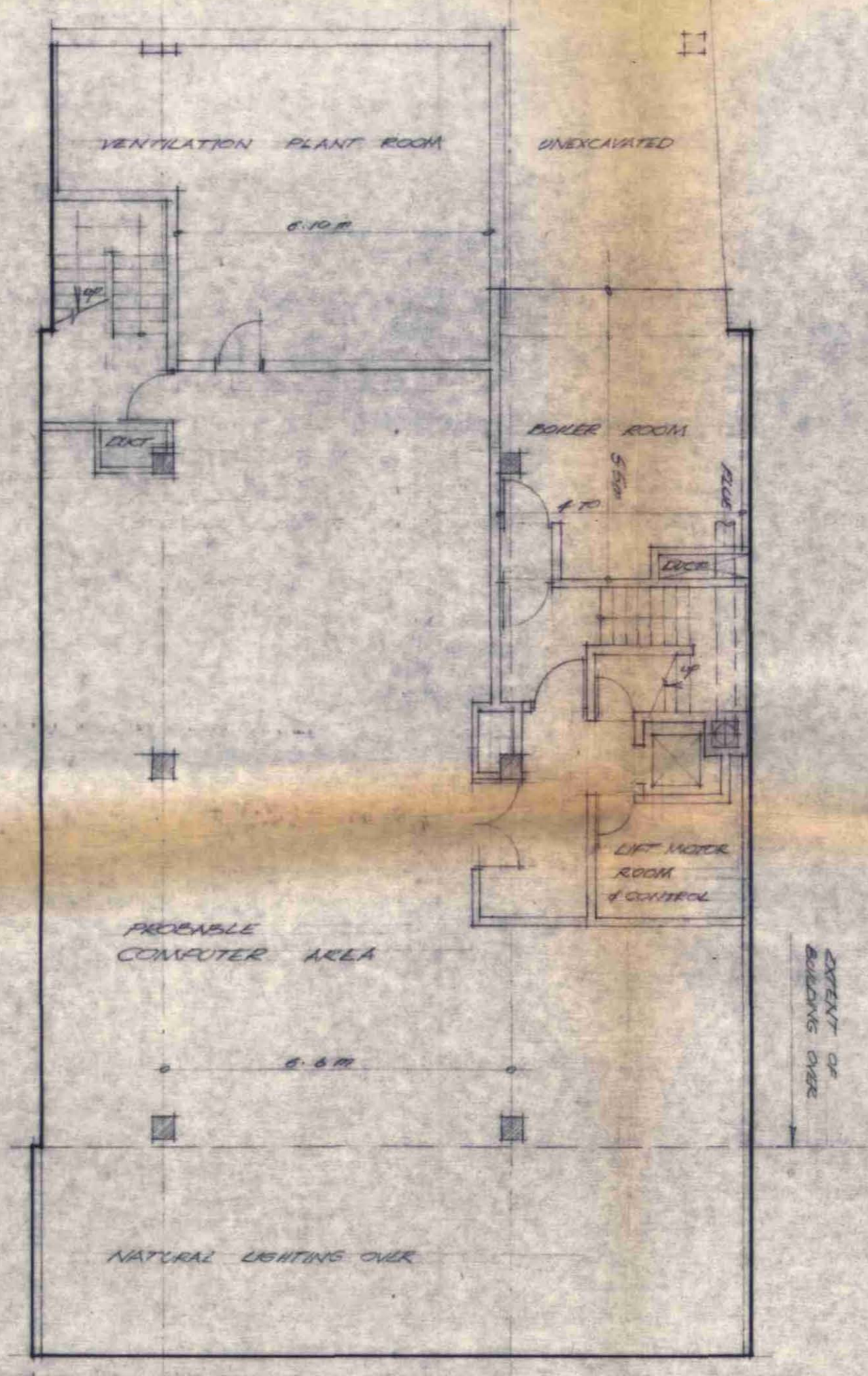
1:100 m

(OFFICE AREA 1,450 sq ft)

CTP/P15/16/B/9554

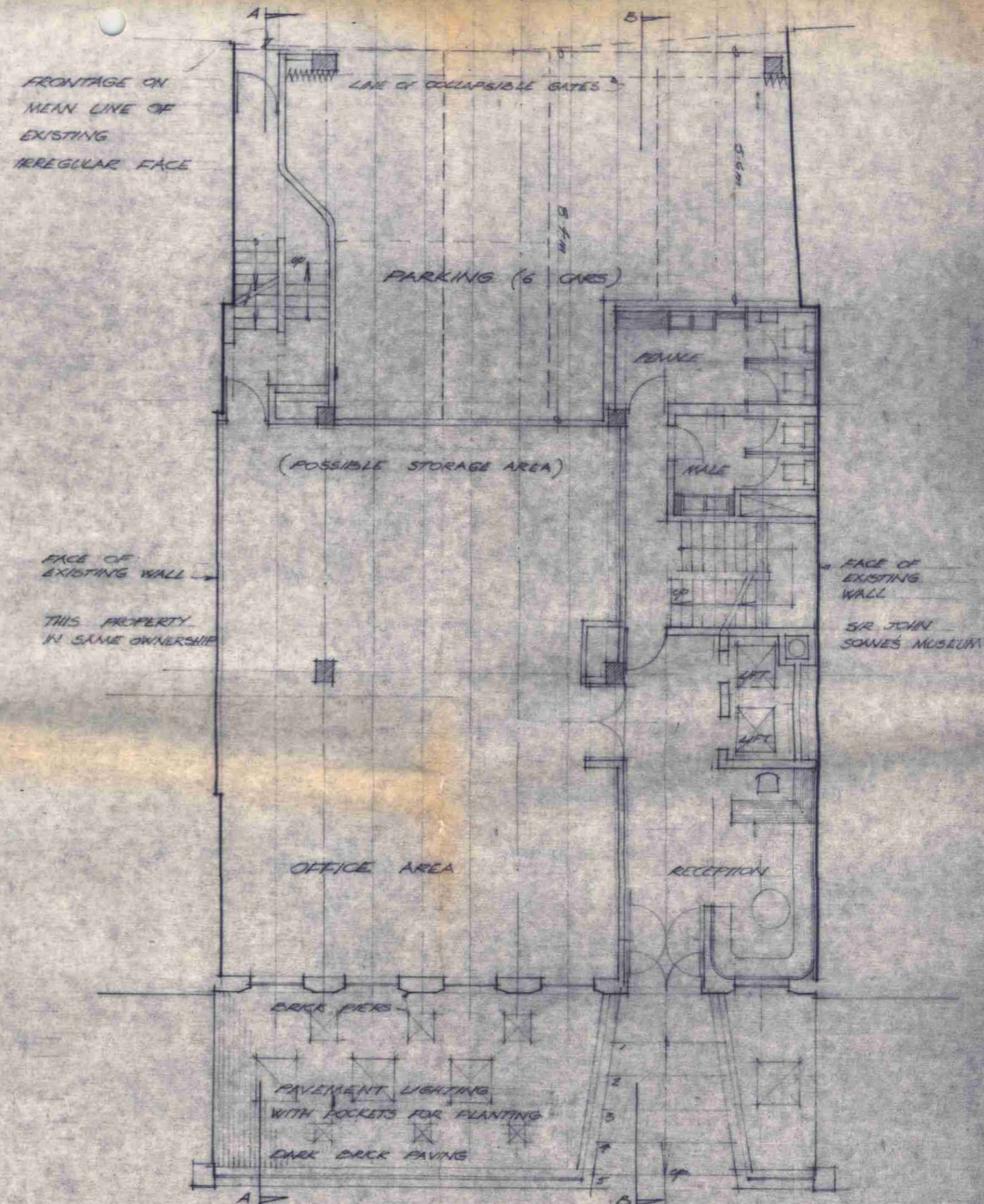
EQUITY & LAW LIFE ASSURANCE SOCIETY LTD
10 & 11 LINCOLN'S INN FIELDS

[Signature]
B. & N. WESTWOOD, PIET & PARTNERS
AUGUST 70 401/566



BASEMENT PLAN
1:100 m. (COMPUTER AREA 2,150 D²)

FRONTAGE ON MEAN LINE OF EXISTING IRREGULAR FACE



(LINCOLN'S INN FIELDS) PAVEMENT
GROUND FLOOR PLAN
1:100 m. OFFICE AREA 1150 D² excluding reception & w.c.

EQUITY & LAW LIFE ASSURANCE SOCIETY LTD.
10 & 11 LINCOLN'S INN FIELDS
B. & N. WESTWOOD, PIET & PARTNERS.
AUGUST 70
191/54 5



LONDON BOROUGH OF CAMDEN
 SET PLANS APPROVED
 21 OCT 1970
 ON BEHALF OF THE COUNCIL

CTP/A15/16/B/9554

FRONT ELEVATION

TO LINCOLN'S INN FIELDS

SCALE 8 FEET TO 1 INCH

EQUITY & LAW LIFE ASSURANCE SOCIETY LTD
 10 & 11 LINCOLN'S INN FIELDS

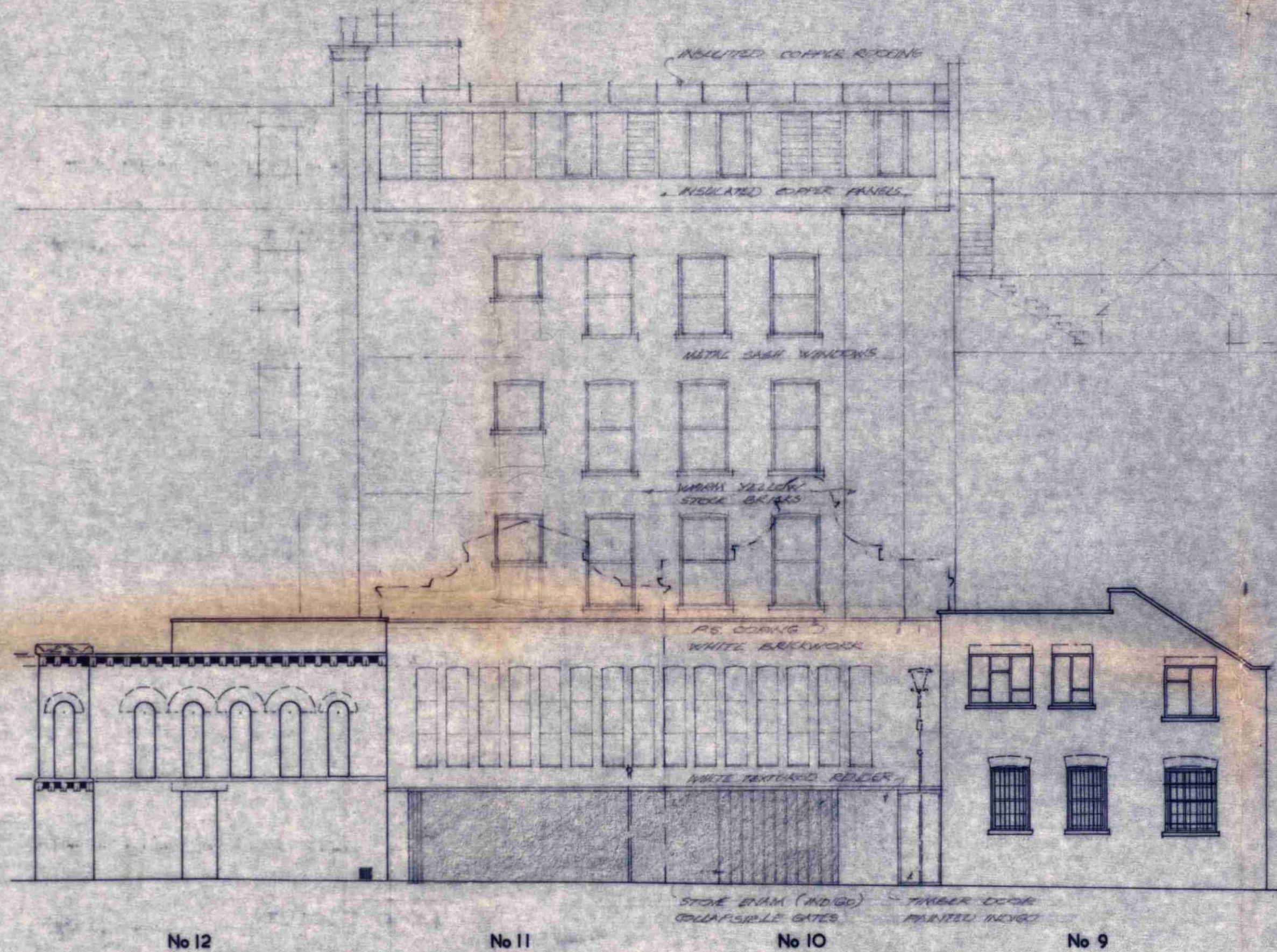
G. Chapman

B. & N. WESTWOOD, PERS & PARTNERS

FROM SURVEY DRAWING
 PREPARED BY:

AUGUST 70
 PDL/SK3

**HUMBERT & FLINT,
 CHARTERED SURVEYORS,
 6 LINCOLNS INN FIELDS,
 LONDON WC2**



No 12

No 11

No 10

No 9

CTP/P15/16/B/9554

REAR ELEVATION

TO WHETSTONE PARK

SCALE 8 FEET TO 1 INCH

EQUITY & LAW LIFE ASSURANCE SOCIETY LTD
10 & 11 LINCOLN'S INN FIELDS

G. Chapman for

B. & N. WESTWOOD, PIET & PARTNERS.

FROM SURVEY DRAWING
PREPARED BY:
AUGUST 70
201/5K4

HUMBERT & FLINT,
6 LINCOLNS INN FIELDS,
LONDON W.C.2