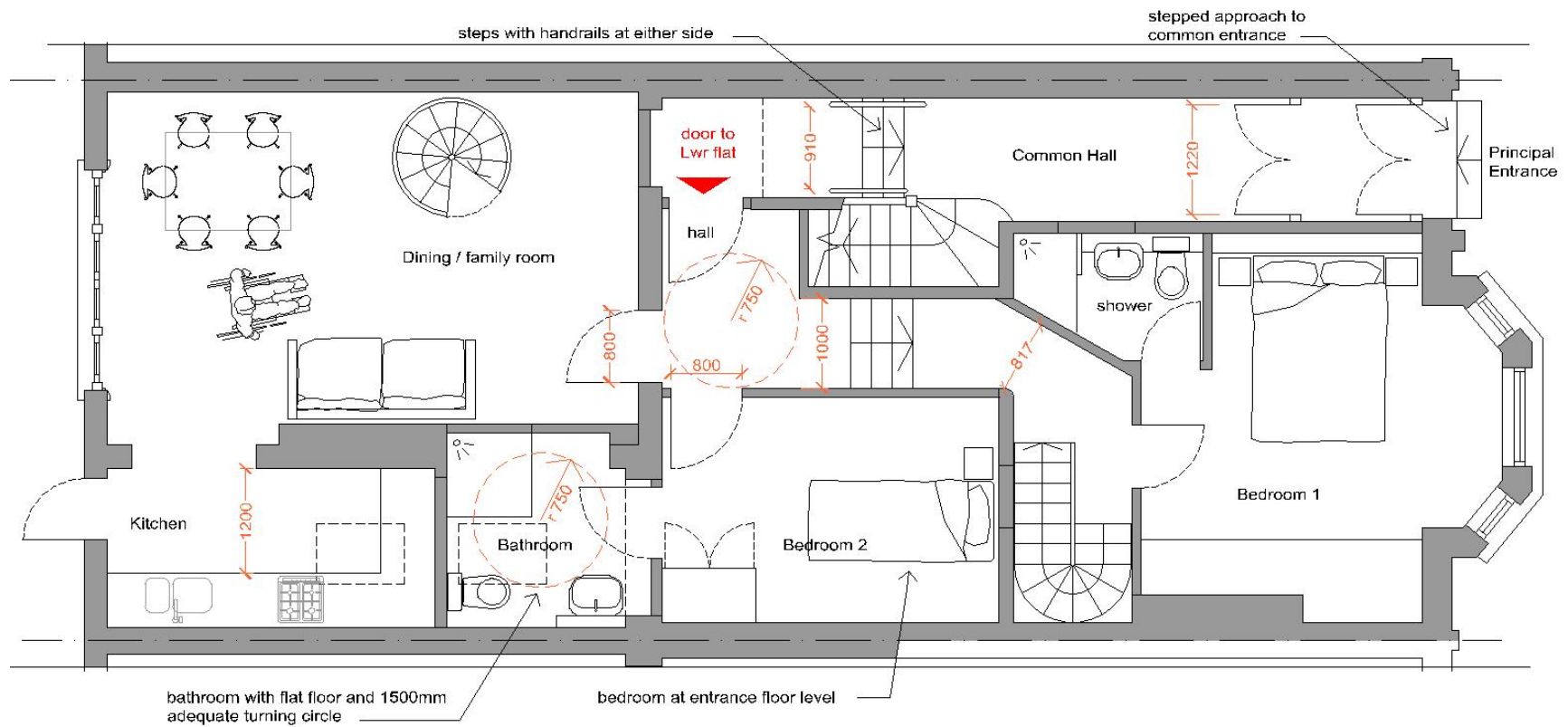


COMPLIANCE WITH THE LIFETIME HOMES STANDARD:		21 GLENMORE ROAD LONDON NW3 4BY		
	<i>Design Criteria</i>	<i>guidance applicable?</i>	<i>Guidance met?</i>	<i>Further explanations</i>
1	Car parking width	NO	N/A	There is no parking within the boundary of the building
2	Access from car parking	NO	N/A	There is no parking within the boundary of the building – all parking is Street Parking. there is a stepped approach at the Principal Entrance, and 1 step from the Street.
3	Approach Gradients	YES	YES	The principle entrance is not ramped, - there is insufficient distance from the boundary to the building to install a compliant ramp.
4	Entrances	YES	PART	The main entrance will be illuminated. There will not be a level threshold although clear opening widths easily achieve 800mm& the Lower Ground entrance shall have a level
5	Communal stairs and lifts	NO	NO	The building does not have a lift. There is no requirement for a communal staircase as the staircase in the common parts is only for the use of the upper floor flat. The remaining criteria is not considered relevant as there is no communal staircase.
6	Doorways and hallways	YES	YES	The communal entrance is 1200mm wide and the communal hallway is 900mm wide at the narrowest point – this is a clear width between handrails. This is in excess of the requirements. The internal corridors is 1000mm wide, with one pinch point at 820mm. There is facility to turn a wheelchair in the internal corridor within the dwelling. All internal doors have a clear opening of 800mm, handles and levers will be within 1100mm above floor level

7	Wheelchair accessibility	YES	YES	The Lower Ground floor has a layout that facilitates access to key living spaces by a wheelchair user. There is facility to turn a wheelchair in the internal corridor within the dwelling, and within the bathroom.
8	Living Room	YES	YES	There is provision for a dining / family room which can accommodate seating and dining on the entry level floor.
9	Entrance level bed space	YES	YES	A wheelchair accessible bedroom with ensuite bathroom is provided at entry level in the Lower Ground floor.
10	Entrance level WC and shower drainage	YES	YES	A fully compliant bathroom with wheelchair and ambulant access is provided for at entrance level of the lower floor dwelling.
11	Bathroom and WC walls reinforced	YES	YES	All bathroom walls will be capable of accommodating reinforced construction in compliance with the Lifetime Home guide.
12	Stair lift and through floor lift	YES	NO	There is no lift in the building. It would be feasible to accommodate a lift between the entry level floor and the upper floor if necessary.
13	Tracking hoist route	YES	YES	The entrance level bedrooms would be able to accommodate a tracking route directly into ensuite bathroom facilities.
14	Bathroom layout	YES	YES	A wheelchair accessible bathroom is provided at entrance level and this is the same level as one bedroom.
15	Window Specification	YES	YES	The family room, one bedroom and the study area have windows where the glazing is 800mm above floor level and the controls are within 1200mm above floor level. The wheelchair accessible bedroom has glazing at a higher level, although opening controls can be remotely located.
16	Controls, fixtures & fitting	YES	YES	All internal controls and fittings will be fully compliant with the Lifetime Home guide



Diagrammatic layout of ground floor showing dimensions from Lifetime Homes Guidance