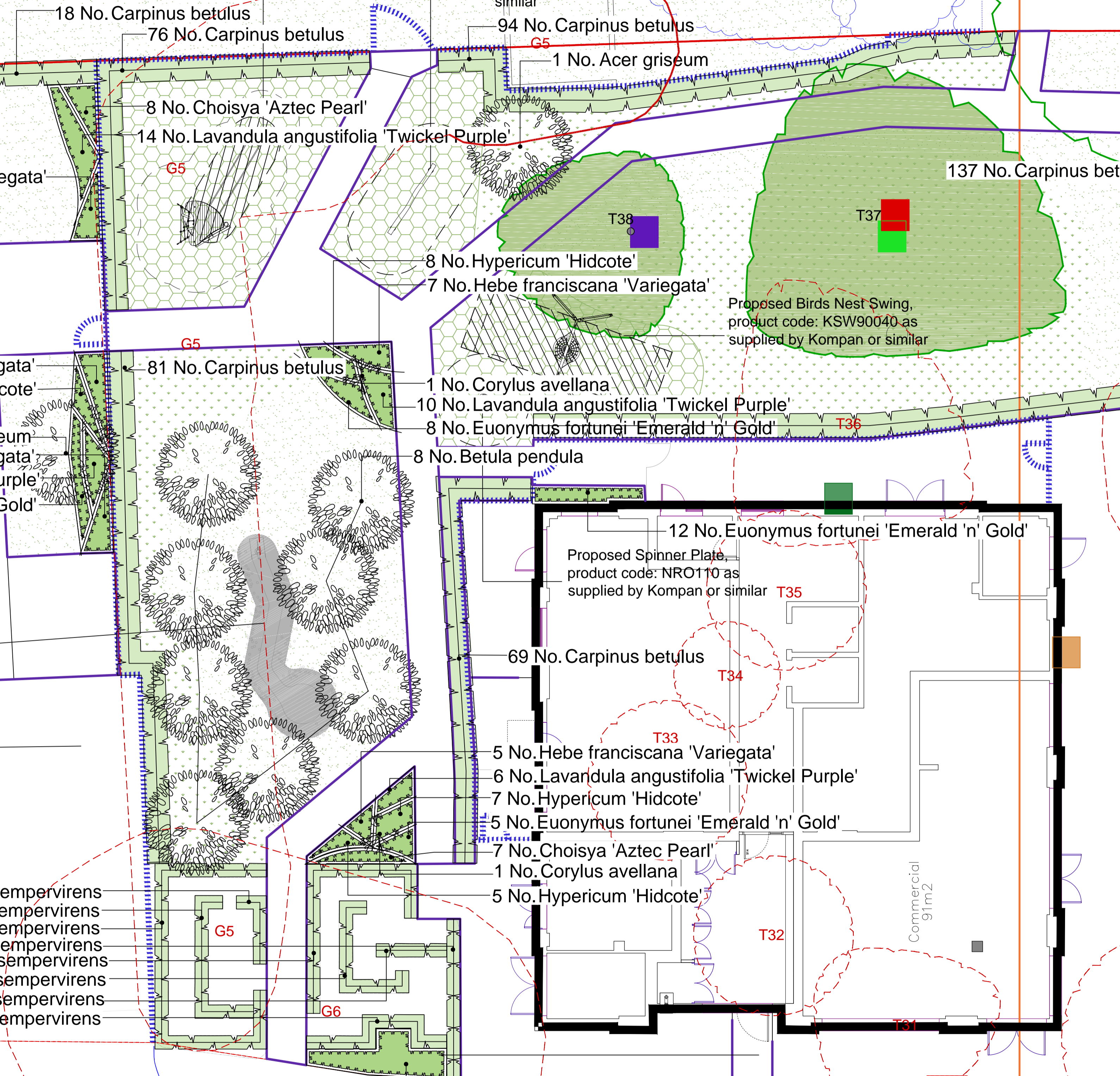


Cartmel

Proposed Tower Slide with roof, product code: NRO304 as supplied by Kompan or similar

Proposed Balance Beam on springs, product code: NRO827 as supplied by Kompan or similar

Sheet 1 Sheet 2



8 No. Hebe franciscana 'Variegata'

18 No. Carpinus betulus
76 No. Carpinus betulus

94 No. Carpinus betulus
1 No. Acer griseum

137 No. Carpinus betulus

8 No. Choisya 'Aztec Pearl'
14 No. Lavandula angustifolia 'Twickel Purple'

8 No. Hypericum 'Hidcote'
7 No. Hebe franciscana 'Variegata'

Proposed Birds Nest Swing, product code: KSW90040 as supplied by Kompan or similar

10 No. Hebe franciscana 'Variegata'
7 No. Hypericum 'Hidcote'

81 No. Carpinus betulus

1 No. Corylus avellana
10 No. Lavandula angustifolia 'Twickel Purple'
8 No. Euonymus fortunei 'Emerald 'n' Gold'

8 No. Betula pendula

1 No. Acer griseum
9 No. Hebe franciscana 'Variegata'
8 No. Lavandula angustifolia 'Twickel Purple'
10 No. Euonymus fortunei 'Emerald 'n' Gold'

12 No. Euonymus fortunei 'Emerald 'n' Gold'

Proposed Spinner Plate, product code: NRO110 as supplied by Kompan or similar

69 No. Carpinus betulus

5 No. Hebe franciscana 'Variegata'
6 No. Lavandula angustifolia 'Twickel Purple'
7 No. Hypericum 'Hidcote'
5 No. Euonymus fortunei 'Emerald 'n' Gold'
7 No. Choisya 'Aztec Pearl'
1 No. Corylus avellana
5 No. Hypericum 'Hidcote'

11 No. Buxus sempervirens
23 No. Buxus sempervirens
54 No. Buxus sempervirens
21 No. Buxus sempervirens
37 No. Buxus sempervirens
22 No. Buxus sempervirens
9 No. Buxus sempervirens
23 No. Buxus sempervirens

Herbaceous Mix
5 No. Allium hollandicum 'Purple Sensation' 20%
10 No. Deschampsia cespitosa 40%
5 No. Echinacea purpurea 20%
5 No. Verbena bonariensis 20%

VARDELL STREET

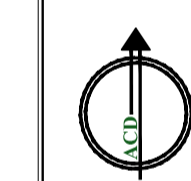
Soft Landscape Legend

- Proposed site boundary
Existing trees to be removed
Existing trees to be retained and protected during construction
Proposed tree planting within breedon gravel. See detail
Proposed specimen shrub planting
Proposed shrub planting to receive 75mm bark mulch after planting operations
Proposed hedge planting to be planted in a double staggered row 300mm apart and at 500mm centres in each row. To be maintained at 1m height. Box hedge to be planted in a single row at 0.3 centres and maintained to 0.5m in height
Proposed mixed herbaceous planting to be planted in groups of 3-5no. of each species, and as above
Proposed wildflower grassland areas to be Mead3 and Wild3 seed mix as supplied by meadomania.co.uk or similar
Proposed grass areas to receive good quality amenity grass turves laid in line with good horticultural practices
Proposed grassmatta as supplied by Matta products or similar. To be installed in line with critical fall heights and ENBS1176 and ENBS1177

Ecology Enhancements

- Proposed bat box to be schwegler 2FN or similar
Proposed bird box to be schwegler 1B or similar
Proposed insect house to be a ladybird tower
Proposed swift box to be Schwegler 17A or similar
Proposed sparrow terrace to be schwegler 1SP or similar

SPECIFICATION
Forestry Commission Practice note 8.
All native species should be of local stock. Native trees and shrubs certified as British Native plant stock.
All planting stock should comply with the Horticultural Trade Association National Plant specification.
All planting preparation, handling, planting & maintenance should be in accordance with CPSE Code for Handling and Establishing plants.
All trees and shrubs to comply with BS3936 Part 1 1992, planted to BS4043:1989 and BS4428:1989.
All works generally, to comply with the written Soft Landscape Specification.
Topsoil incorporated into planting beds to be gently mounded towards the centre of each bed to allow for settlement.
On completion of planting the whole area of the shrub bed shall be mulched with 75mm consolidated thickness of medium textured decorative grade natural pine bark having first been prepared in accordance with the specification.
Free standing hedges shall have a 3 strand galvanised wire and lanalised softwood timber post fence, to BS1722 Part 2:2000, erected along a line between the two rows of hedge plants.
All existing trees and hedges to be protected in accordance with BS5837:2012 for the duration of the construction period.
NOTE: DO NOT SCALE FROM DRAWING
Planting Schedule on sheet 2



Rev Date Details Drawn

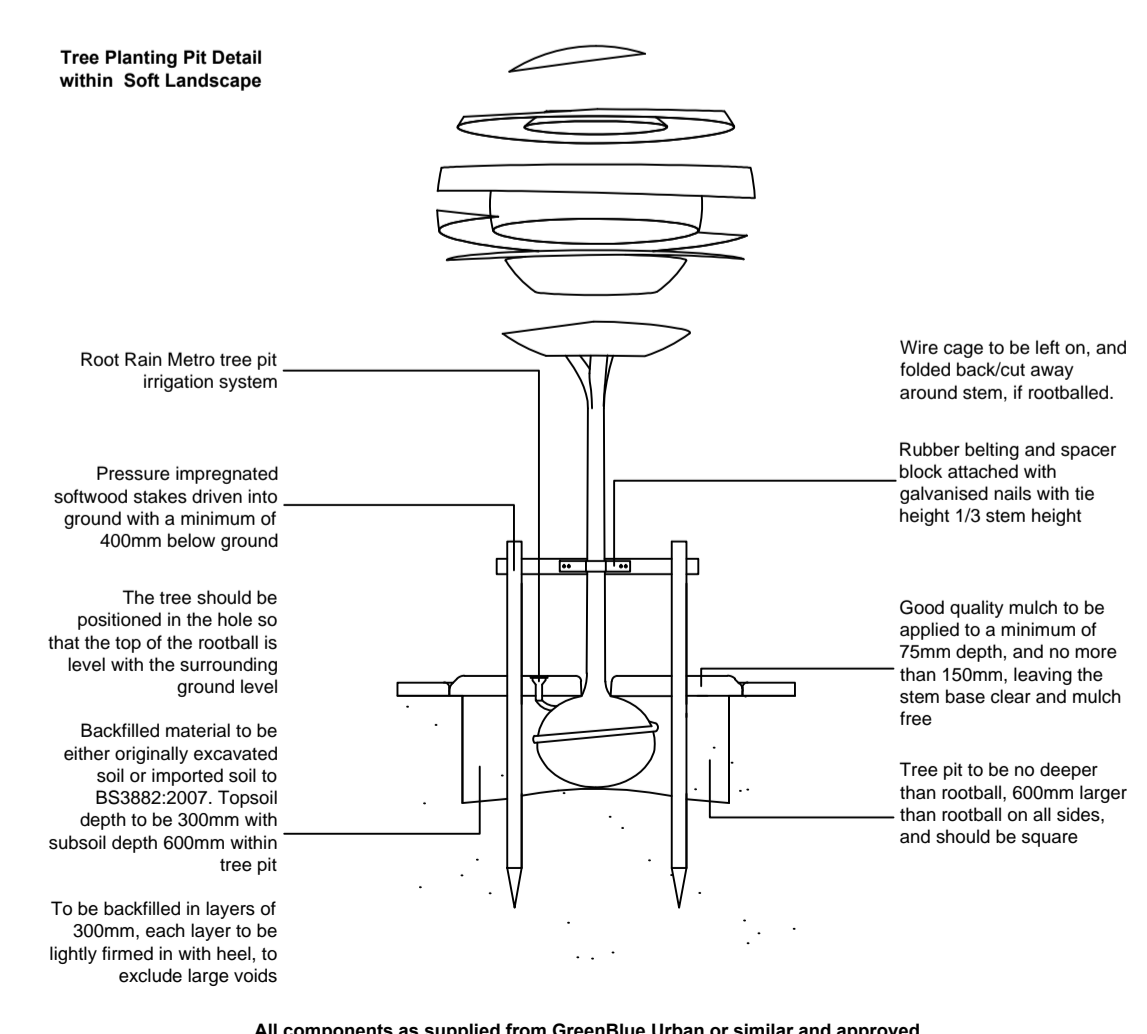
ACD
Ecology
Archaeology
Arboriculture
Landscape Architecture

ACD Landscape Architect & ACD Ecology & ACD Archaeology
Rodbourne Rail Business Centre, Grange Lane,
Malmesbury, SN16 0ES
Tel: 01666 825646
ACD Arboriculture
Courtyard House, Mill Lane, Godalming, GU7 1EY
Tel: 01483 425714
ACD (Landscape Architects) Southampton
12 Southgate Street, Winchester, SO23 9EF
Tel: 01962 855604
www.acdlandscape.co.uk

Lovell Partnerships Limited

scheme: Regent's Park Estates
Newlands
client: Lovell Partnerships Ltd
drawing: Soft Landscape Proposals
date: September 2015
scale: 1:100@A1
drawing no: LOV20035-11 sheet 1 of 2
drawn: JNT checked: JS

Copyright of ACD Landscape Architects Ltd. All rights described in Chapter IV of the Copyright, Designs and Patents Act 1988 have been generally asserted: 2011. Copyright of this plan remains with ACD until all fees have been paid in full.



All components as supplied from GreenBlue Urban or similar and approved