

17 No. Carex hachijoensis 'Evergold' 20%  
 17 No. Stipa gigantea 20%  
 17 No. Verbena bonariensis 20%  
 17 No. Echinacea purpurea 20%  
 17 No. Allium hollandicum 'Purple Sensation' 20%

Herbaceous Planting Mix  
 5 No. Achillea millefolium 'Cerise Queen' 25%  
 5 No. Erigeron karvinskianus 25%  
 5 No. Euphorbia amygdaloides 'Purpurea' 25%  
 5 No. Salvia officinalis 25%

Herbaceous Planting Mix  
 12 No. Carex comans 'Bronze Form' 20%  
 6 No. Geranium 'Ann Folkard' 10%  
 6 No. Hebe franciscana 'Blue Gem' 10%  
 12 No. Lavandula angustifolia 'Twickel Purple' 20%  
 6 No. Potentilla fruticosa 'Abbotswood White' 10%  
 6 No. Rosmarinus officinalis 'Miss Jessopp's Upright' 10%  
 12 No. Salvia officinalis 'Purpurascens' 20%

**SPECIFICATION**  
 Forestry Commission Practice note 8.  
 All native species should be of local stock. Native trees and shrubs certified as British Native plant stock.  
 All planting stock should comply with the Horticultural Trade Association National Plant specification.  
 All planting preparation, handling, planting & maintenance should be in accordance with CPSE Code for Handling and Establishing plants.  
 All trees and shrubs to comply with BS3936 Part 1 1992, planted to BS4043:1989 and BS4428:1989.  
 All works generally, to comply with the written Soft Landscape Specification.  
 Topsoil incorporated into planting beds to be gently mounded towards the centre of each bed to allow for settlement.  
 On completion of planting the whole area of the shrub bed shall be mulched with 75mm consolidated thickness of medium textured decorative grade natural pine bark having first been prepared in accordance with the specification.  
 Free standing hedges shall have a 3 strand galvanised wire and tanalised softwood timber post fence, to BS1722 Part 2:2000, erected along a line between the two rows of hedge plants.  
 All existing trees and hedges to be protected in accordance with BS5837:2012 for the duration of the construction period.

NOTE: DO NOT SCALE FROM DRAWING

**Soft Landscape Legend**

- Proposed site boundary
- Existing trees to be removed
- Existing trees to be retained and protected during construction
- Proposed tree planting within soft landscape. See detail
- Proposed specimen shrub planting
- Proposed Buxus (box) hedge planting to be planted in a single row at 300mm centres and maintained at 500mm height
- Proposed native hedge planting to be planted in a double staggered row 300mm apart and at 500mm centres in each row. To be maintained at 1m height
- Proposed shrub planting to receive 75mm bark mulch after planting operations
- Proposed grass areas to receive good quality amenity grass turves laid in line with good horticultural practices
- Proposed drive to be 38mm Pre-Grown Golpia Grass Paver and 150mm Cellweb to be laid to suppliers specification as supplied by geosyn.co.uk
- Proposed topsoil within planters for communal use
- Proposed treated timber built planters for communal use, for detail see 114RPE GI 500

**Ecology enhancements**

Rev	Date	Details	Drawn

**ACD**  
 Ecology  
 Archaeology  
 Arboriculture  
 Landscape Architecture

ACD Landscape Architect & ACD Ecology & ACD Archaeology  
 Rodbourne Rail Business Centre, Grange Lane,  
 Malmesbury, SN16 0ES  
 Tel: 01666 825646

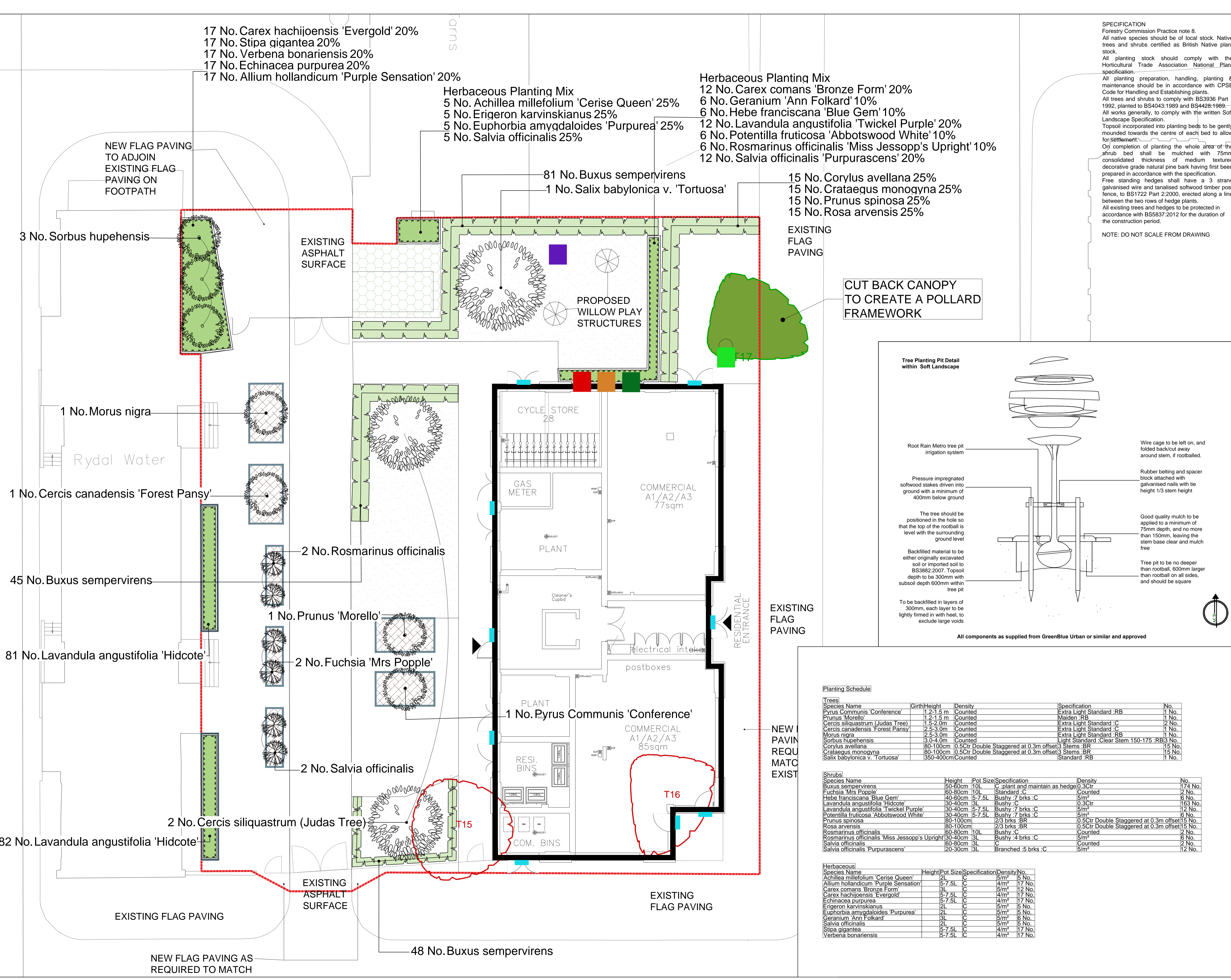
ACD Arboriculture  
 Courtyard House, Mill Lane, Godingham, GU7 1EY  
 Tel: 01483 425714

ACD (Landscape Architects) Southampton  
 12 Southgate Street, Winchester, SO23 9EF  
 Tel: 01962 855604  
 www.acdlandscape.co.uk

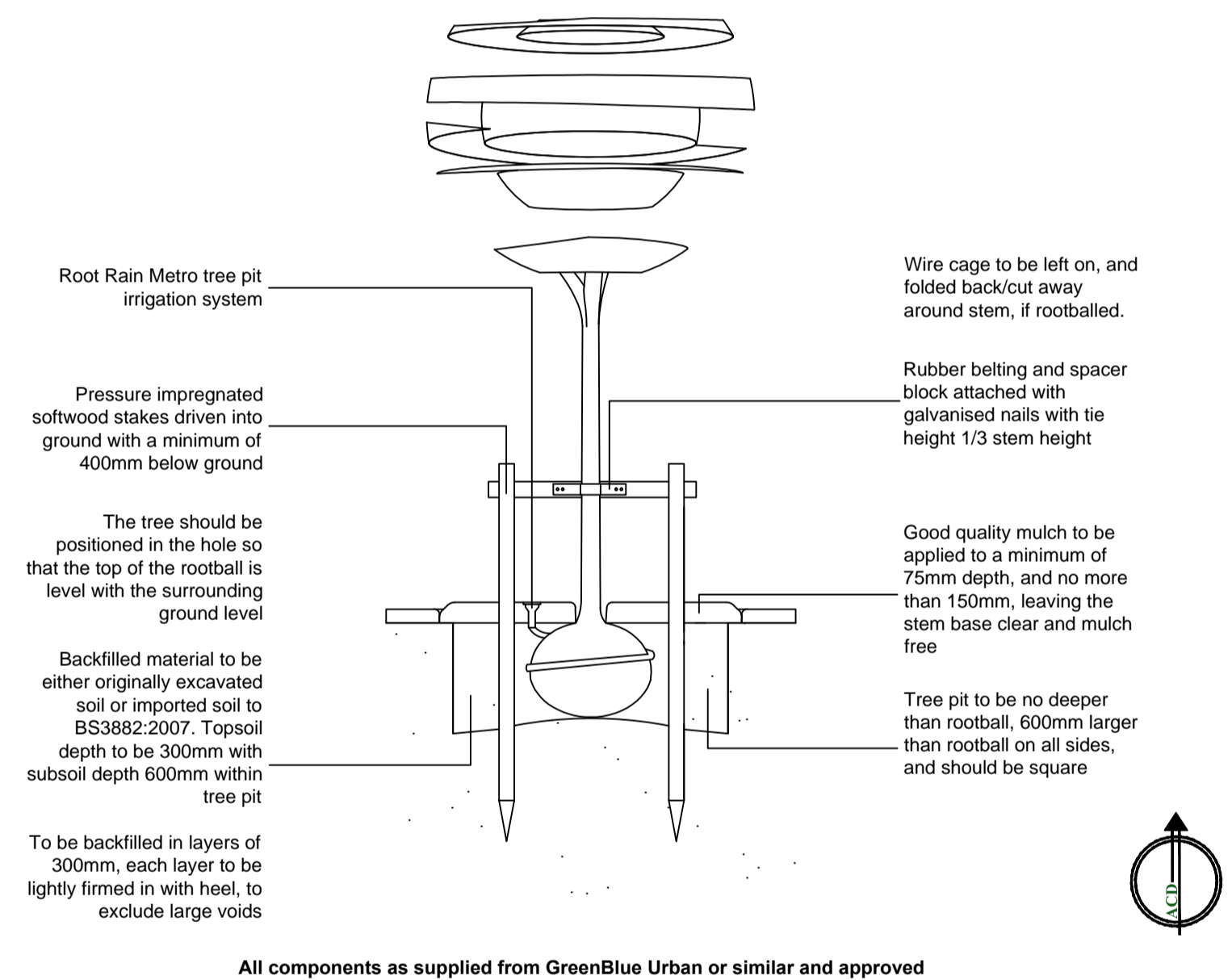
**Lovell Partnerships Limited**

scheme: Regent's Park Estates  
 Rydell Water (Former One Stop)  
 client: Lovell Partnerships Ltd  
 drawing: Soft Landscape Proposals  
 date: September 2015  
 scale: 1:100@A1  
 drawing no: LOV20033-11  
 drawn: JNT checked: JS

Copyright of ACD Landscape Architects Ltd. All rights reserved in Chapter IV of the Copyright, Designs and Patents Act 1988 have been generally asserted: 2011. Copyright of this plan remains with ACD until all fees have been paid in full.



**Tree Planting Pit Detail within Soft Landscape**



**Planting Schedule**

Trees	Species Name	Height	Pot Size	Specification	Density	No.
	Pyrus Communis 'Conference'	1.2-1.5 m	Counted	Extra Light Standard :RB	1 No.	1 No.
	Prunus 'Morello'	1.2-1.5 m	Counted	Maiden :RB	1 No.	1 No.
	Cercis siliquastrum (Judas Tree)	1.5-2.0 m	Counted	Extra Light Standard :C	2 No.	2 No.
	Cercis canadensis 'Forest Pansy'	2.5-3.0 m	Counted	Extra Light Standard :C	1 No.	1 No.
	Morus nigra	2.5-3.0 m	Counted	Extra Light Standard :RB	1 No.	1 No.
	Sorbus hupehensis	3.0-4.0 m	Counted	Light Standard :Clear Stem 150-175 :RB	3 No.	3 No.
	Corylus avellana	80-100cm	0.5Ctr Double Staggered at 0.3m offset	3 Stems :BR	15 No.	15 No.
	Crataegus monogyna	80-100cm	0.5Ctr Double Staggered at 0.3m offset	3 Stems :BR	15 No.	15 No.
	Salix babylonica v. 'Tortuosa'	350-400cm	Counted	Standard :RB	1 No.	1 No.

Shrubs	Species Name	Height	Pot Size	Specification	Density	No.
	Buxus sempervirens	50-60cm	10L	C :plant and maintain as hedge	0.3Ctr	174 No.
	Fuchsia 'Mrs Popple'	60-80cm	10L	Standard :C	Counted	2 No.
	Hebe franciscana 'Blue Gem'	40-60cm	5-7.5L	Bushy :7 brks :C	5/m²	6 No.
	Lavandula angustifolia 'Hidcote'	30-40cm	3L	Bushy :C	0.3Ctr	163 No.
	Lavandula angustifolia 'Twickel Purple'	30-40cm	5-7.5L	Bushy :7 brks :C	5/m²	12 No.
	Potentilla fruticosa 'Abbotswood White'	30-40cm	5-7.5L	Bushy :7 brks :C	5/m²	6 No.
	Prunus spinosa	80-100cm	2/3 brks :BR	0.5Ctr Double Staggered at 0.3m offset	15 No.	15 No.
	Rosa arvensis	80-100cm	2/3 brks :BR	0.5Ctr Double Staggered at 0.3m offset	15 No.	15 No.
	Rosmarinus officinalis	80-80cm	10L	Bushy :C	Counted	2 No.
	Rosmarinus officinalis 'Miss Jessopp's Upright'	30-40cm	3L	Bushy :4 brks :C	5/m²	6 No.
	Salvia officinalis	60-80cm	3L	C	Counted	2 No.
	Salvia officinalis 'Purpurascens'	20-30cm	3L	Branched :5 brks :C	5/m²	12 No.

Herbaceous	Species Name	Height	Pot Size	Specification	Density	No.
	Achillea millefolium 'Cerise Queen'	2L	C	C	5/m²	5 No.
	Allium hollandicum 'Purple Sensation'	5-7.5L	C	C	4/m²	17 No.
	Carex comans 'Bronze Form'	3L	C	C	5/m²	12 No.
	Carex hachijoensis 'Evergold'	5-7.5L	C	C	4/m²	17 No.
	Echinacea purpurea	5-7.5L	C	C	4/m²	17 No.
	Erigeron karvinskianus	2L	C	C	5/m²	5 No.
	Euphorbia amygdaloides 'Purpurea'	2L	C	C	5/m²	5 No.
	Geranium 'Ann Folkard'	3L	C	C	5/m²	6 No.
	Salvia officinalis	2L	C	C	5/m²	5 No.
	Stipa gigantea	5-7.5L	C	C	4/m²	17 No.
	Verbena bonariensis	5-7.5L	C	C	4/m²	17 No.